

Fixed Coaxial Attenuators

dc – 18 GHz

2052 Series

V2.00

Features

- Integrated Connector-Attenuator.
- Low VSWR.
- Space saving design.
- Low Cost.

Description

These connector-attenuators provide low VSWR launches onto microstrip or stripline. Attenuators are incorporated into the connector, eliminating the need for separate coaxial components and connectors, thereby saving space, weight and cost. By designing the attenuators into the launches, reliability is increased and mismatch losses are lowered. All models are engineered to meet rigid reliability standards. The film resistive circuit is thermally stabilized and mounted in a stainless steel SMA connector, providing a rugged, integral unit.

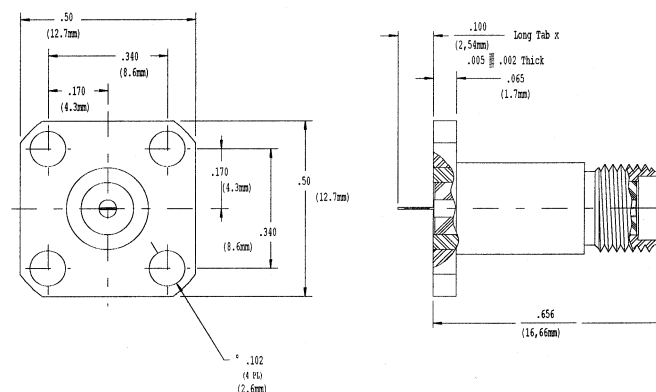


Figure 1

Ordering Information

With Integral Tab

Part Number Plug-Jack	Frequency (GHz)	Attenuation (dB)	VSWR	Figure
2052-6040-03	dc-18	3.0 ± 0.50	dc to 4 GHz 1.15 4 to 12.4 GHz 1.25 12.4 to 18 GHz 1.50	1
2052-6041-06	dc-18	6.0 ± 0.50		
2052-6042-10	dc-18	10.0 ± 0.75		

With Interchangeable Transition Pins

Part Number Plug-Jack	Frequency (GHz)	Attenuation (dB)	VSWR	Figure
2052-6010-XX	dc-18	01 to 06 \pm 0.30*	dc to 4 GHz 1.15	2
2052-6011-XX		07 to 10 \pm 0.50 11 to 20 \pm 0.75 30 \pm 1.00	4 to 12.4 GHz 1.25 12.4 to 18 GHz 1.50	3

To order, replace "XX" with desired attenuation value.

* From 12.4 to 18 GHz, attenuation is \pm 0.40 dB.

Interchangeable transition pins are available for use with all 2052-601X series connector-attenuators. Specify dimensions in accordance with your packaging requirements and the factory will assign a special part number.

Figure 2

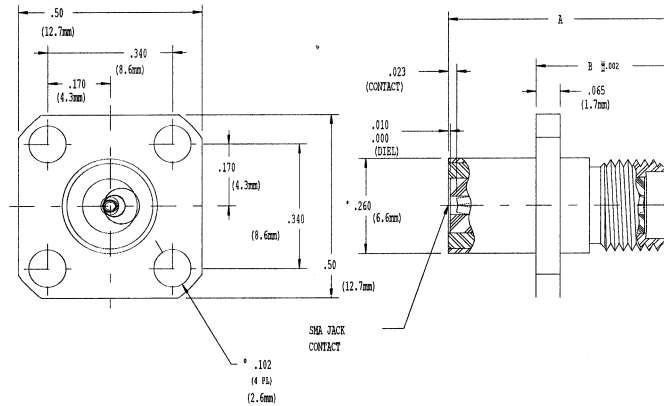


Figure 3

