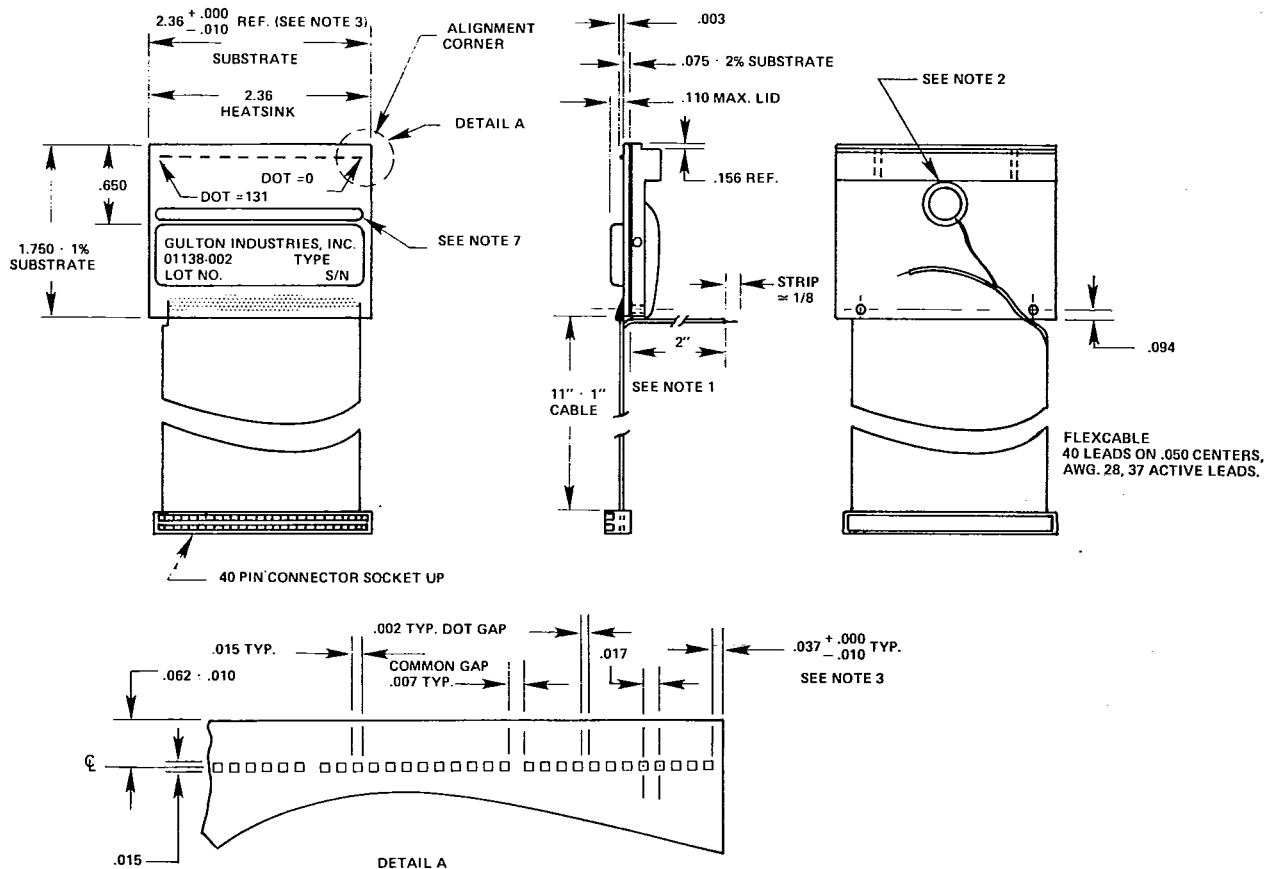




01138-002 GRAPHICS PRINTHEAD

The 01138-002 is a linear array of 132 dots on 0.017" centers (59 dots/inch) arranged in 11 command groups of 12 dots. The unit can produce various size matrix characters and/or graphics data. Two sets of 12 dot drive lines each are provided, one set driving 5 dot groups, and the other set driving 6 dot groups. This allows printout of an entire dotrow in 6 multiplex or strobe pulses.

The 01138 is tested at standard conditions of 8mS pulsewidth at 24 volts nominal printvoltage, but may be operated down to 2mS pulsewidth. (See the 01160-002 for a one piece printhead equal to two 01138 units).



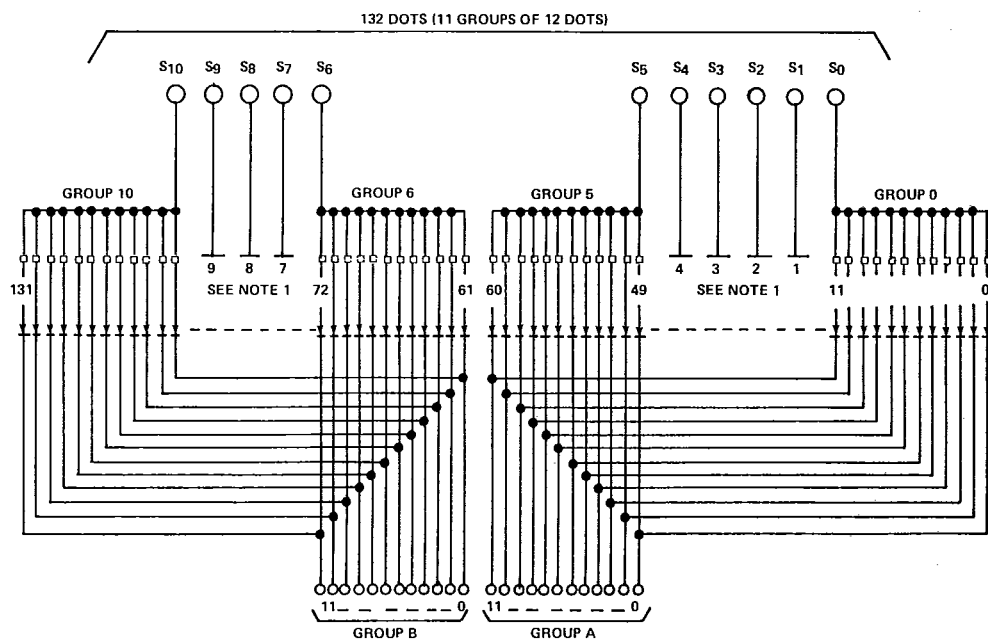
NOTES:

1. CABLE CONDUCTORS LEADS NUMBERS ONE & TWO TO BE TWO (2) INCHES LONGER THAN REMAINING 38 CONDUCTORS. THESE ARE TO BE LEFT FOLDED OUT OF THE WAY UNTIL THE UNIT IS MOUNTED TO HEATSINK. AT WHICH TIME LEAD -1 WILL BE CONNECTED TO THE THERMISTOR AND LEAD -2 LEAVE FLYING WITH STRIPPED TINNED END.
2. THERMISTOR TO BE MOUNTED ON HEATSINK PRIOR MOUNTING THE SUBSTRATE. (USE COPPER LOADED PREFORM).
3. 01138 SUBSTRATE TO BE CLOSE EDGE CUT $.037" \pm .000$ FROM SIDE EDGE TO FIRST AND LAST (FINGER) CONDUCTOR.
SUBSTRATE AFTER CUT SHOULD BE $2.36" \pm .010$
4. SUBSTRATE TO BE FLUSH WITH TOP AND RIGHT SIDE EDGES OF HEATSINK.
5. BRANDING AS SHOWN ON DRAWING.
6. NOMINAL PRINTING VOLTAGE FOR SINGLE HEAD IS 24V $\pm 2V$ 25 C AT 8 MSEC. ON 90 C PAPER (JUJO BLUE P/N 30231). FOR DIFFERENT TYPES SEE SPECIFICATION SHEET FOR PROPER VOLTAGE.
7. EXPOSED SILVER CONDUCTORS TO BE COVERED WITH CLEAR EPOXY (P/N 30051-001) AFTER THE FINAL TEST FOR SINGLE UNIT.

T-51-15

PIN	FUNCTION
1	THER-
2	MISTOR
3	COMM S10
4	8B
5	COMM S9
6	4B
7	0B
8	COMM S8
9	7B
10	3B
11	5B
12	COMM S7
13	1B
14	11B
15	10B
16	COMM S6
17	9B
18	6B
19	2B
20	COMM S5
21	10A
22	3A
23	9A
24	COMM S4
25	6A
26	2A
27	11A
28	NC
29	COMM S3
30	NC
31	8A
32	5A
33	COMM S2
34	1A
35	0A
36	7A
37	COMM S1
38	4A
39	NC
40	COMM S0

PIN	FUNCTION
1	THER-
2	MISTOR
3	COMM S10
4	8B
5	COMM S9
6	4B
7	0B
8	COMM S8
9	7B
10	3B
11	5B
12	COMM S7
13	1B
14	11B
15	10B
16	COMM S6
17	9B
18	6B
19	2B
20	COMM S5
21	10A
22	3A
23	9A
24	COMM S4
25	6A
26	2A
27	11A
28	NC
29	COMM S3
30	NC
31	8A
32	5A
33	COMM S2
34	1A
35	0A
36	7A
37	COMM S1
38	4A
39	NC
40	COMM S0



NOTES:
 1. DOT AND COLUMN DESIGNATION SHOWN AS ON MECHANICAL DWG.
 2. DIODES SHOWN AS FORWARD DIRECTION.