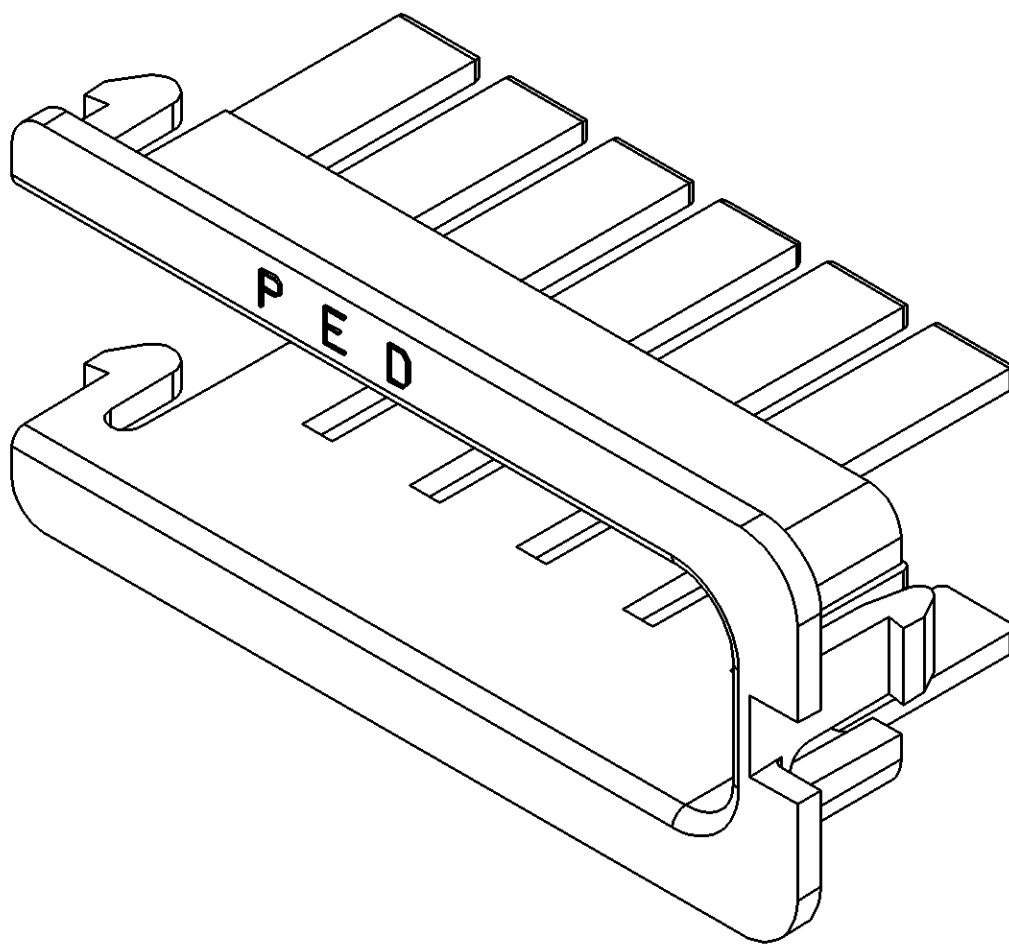
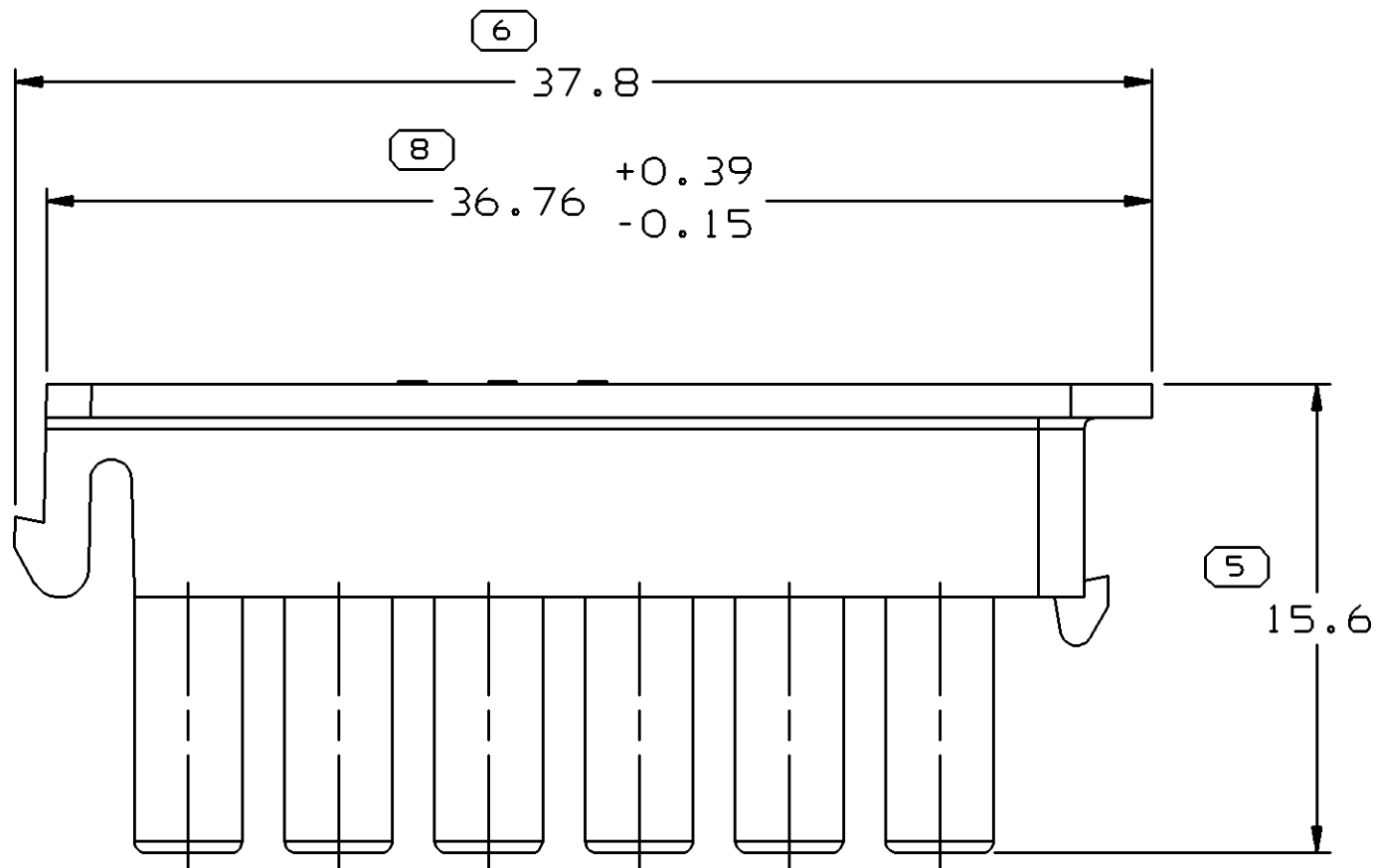
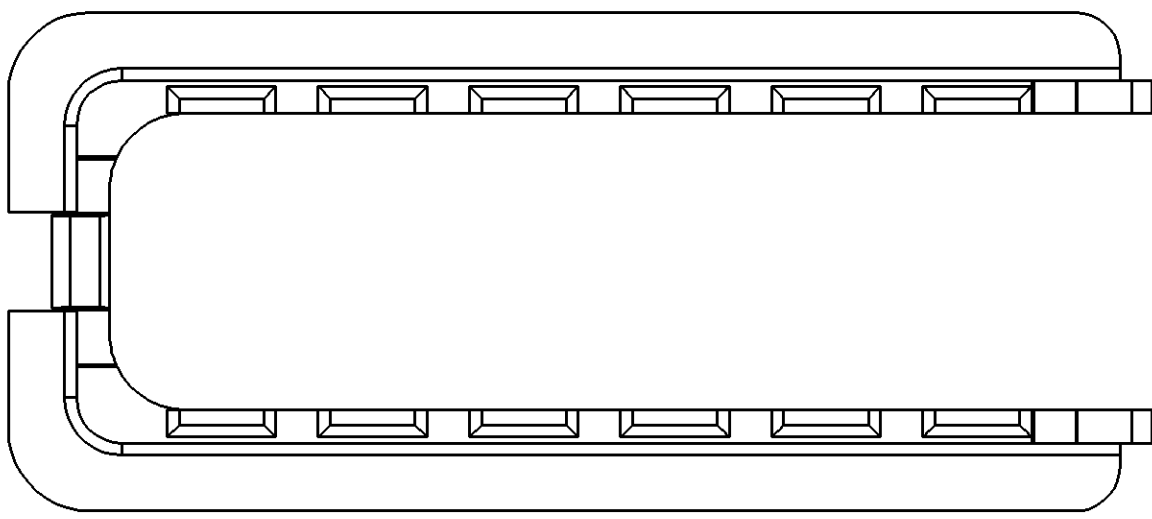
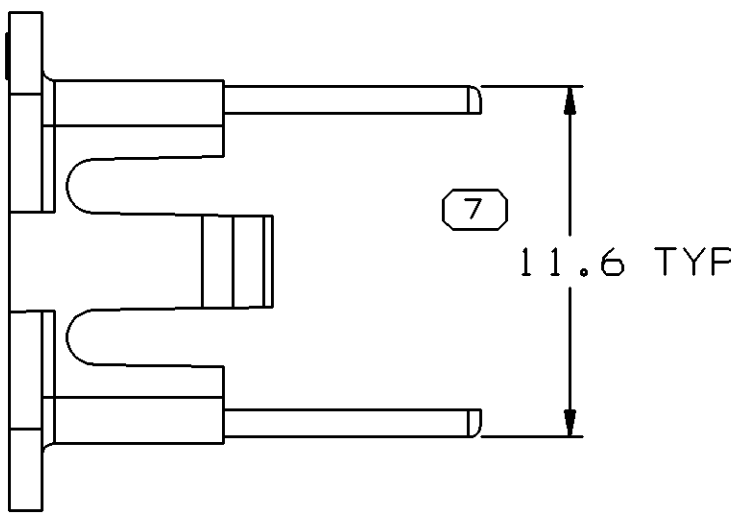
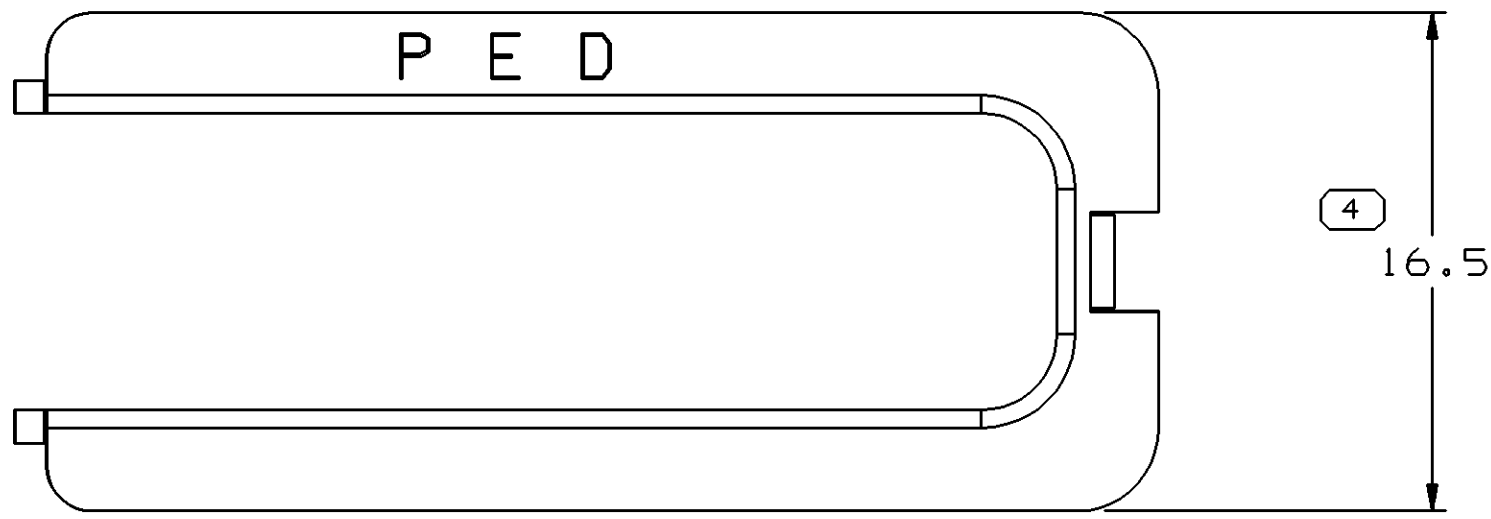
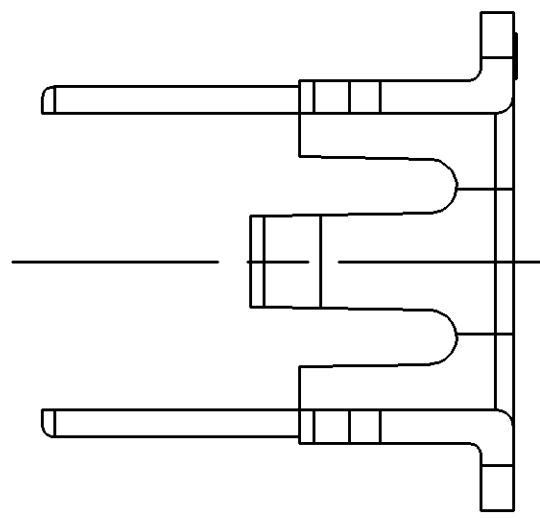
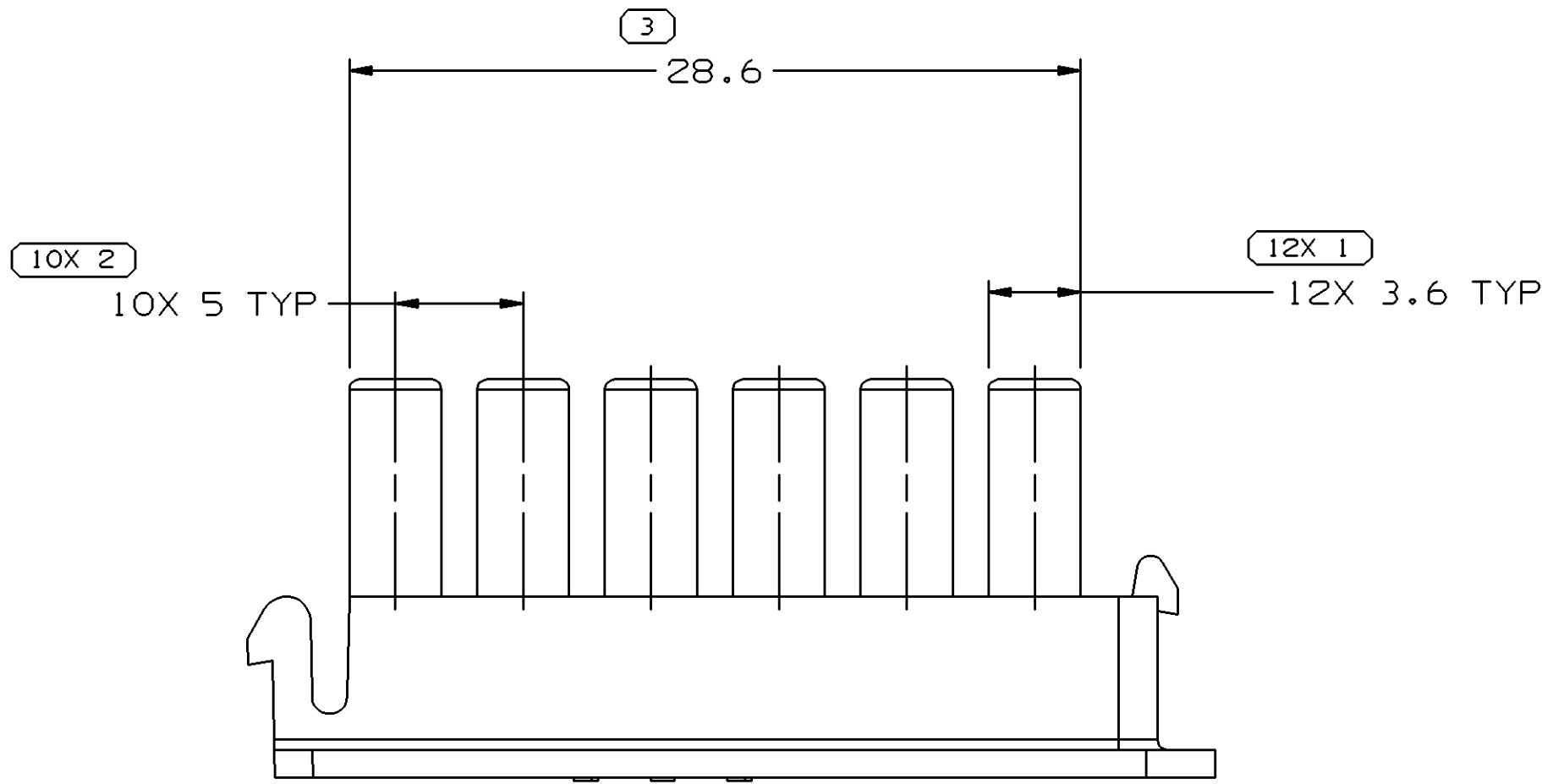


SYMBOL DEFINITION			MISSING SYMBOLS	
A DIMENSION WITHOUT AN INSPECTION REPORT SYMBOL ( ) DOES NOT REQUIRE INSPECTION. IT MAY BE CONTROLLED ON THE INDIVIDUAL COMPONENT DRAWING.	TOTAL NO OF INSPECTIONS REQUIRED	28	NO MISSING SYMBOL NUMBER	
	LAST NO. USED	8		

DWS STATUS				ZONE		REVISION HISTORY				AUTH		DR		APVD	
DATE	STG	REV	N/P	CHG											
11AP95	R	A	-	-					WAS PE043987 & RELEASED	950005	JMH	JMH	JET		
06DE95	R	B	-	-					CHANGED MATERIAL SPEC	169895	MRG	MRG	JG5		
27FE96	R	B1	-	-					REVISED	170601	EMB	EMB	MVA		
09AP98	R	B2	-	-					REVISED GRAPHICS	186367	HGH	HGH	OMP		
19NO01	R	B3	-	-					UPDATED POM ATTRIBUTES	217386	HAM	MRL	6CD		
26AU05	R	B4	-	-					MAT'L SPEC WAS R0071784, ADDED MAT'L RECYCLE, LOGO AND AUTO FEEDING NOTES	271679	TA1	TA1	RL		



NOTES

- UNLESS OTHERWISE SPECIFIED AND/OR INDICATED:  
DIMENSIONS ARE TO FACE OF VIEW SHOWN AND AUTOMATICALLY ROUNDED BY COMPUTER FOR INSPECTION (SEE MATH MODEL FOR PRECISE DIMENSIONS). FOR ALL OTHER DIMENSIONS NOT SHOWN BUT REQUIRED FOR TOOL BUILD, SEE MATH MODEL FOR PRECISE TOOL PATH DATA.
- MATERIAL RECYCLING CODE PER ISO 11469. (1.5)X(0.1) CHARACTERS AS SHOWN TO BE LOCATED ON ANY EXTERIOR SURFACE. OPTIONAL CONSTRUCTION TO BE NO RECYCLING CODE.
- THIS PART IS NOT CONTROLLED FOR AUTOMATIC FEEDING.
- REFERENCE MATING COMPONENTS OR EQUIVALENT:  
CONNECTOR 12176505 & 12176506
- (1.5)X(0.1) DELPHI CORPORATE BRAND TO BE LOCATED ON ANY EXTERIOR SURFACE, PREFERABLY VISIBLE AT FINAL ASSEMBLY. OPTIONAL CONSTRUCTION FOR EXISTING TOOLING MAY BE "PED".

		8		PROCESS SENSITIVE DIMENSION	
		DIMENSIONS ENCLOSED IN ( ) INDICATE REFERENCE DIMENSIONS AND NO TOLERANCE LIMITS ARE ESTABLISHED			
DIMENSIONAL RANGE (MM)				CHART F	
FROM	> 0	> 30	> 70	> 100	> 150
TO	20	70	100	150	200