

BIPOLAR ANALOG INTEGRATED CIRCUIT

μ PC1694GR

GENERAL PURPOSE HIGH FREQUENCY WIDEBAND IC FOR FREQUENCY DOWN-CONVERTER

DESCRIPTION

The μ PC1694GR is Silicon monolithic IC for down-converter that is capable of operating up to 1 GHz.

This IC consists of double balanced mixer (DBM), local oscillator and IF amplifier. Furthermore, combination with the μ PC1663G (high-speed video amp) enables it to be applied to a FM demodulation circuit such as DBS tuner.

The package is 14-pin SOP suitable for surface mounting.

FEATURES

- Satisfactory 1% cross-modulation distortion characteristics: $CM = 103 \text{ dB}\mu @ f_{des} = 200 \text{ MHz}$
- Wide band operation: $f \leq 1 \text{ GHz}$
- Easy to connect with varactor diode due to balanced amplifier oscillator
- Single-end push-pull IF amplifier suppresses fluctuation in output impedance
- Supply voltage: 5 V
- Packaged in 14-pin SOP suitable for smaller mounting area

★ APPLICATIONS

- Tuners for TV and VCR

★ ORDERING INFORMATION

Part Number	Package	Supplying Form
μ PC1694GR-E1	14-pin plastic SOP (225 mil)	Embossed tape 16 mm wide. Pin 1 indicates pull-out direction of tape.

Remark To order evaluation samples, please contact your local NEC office.

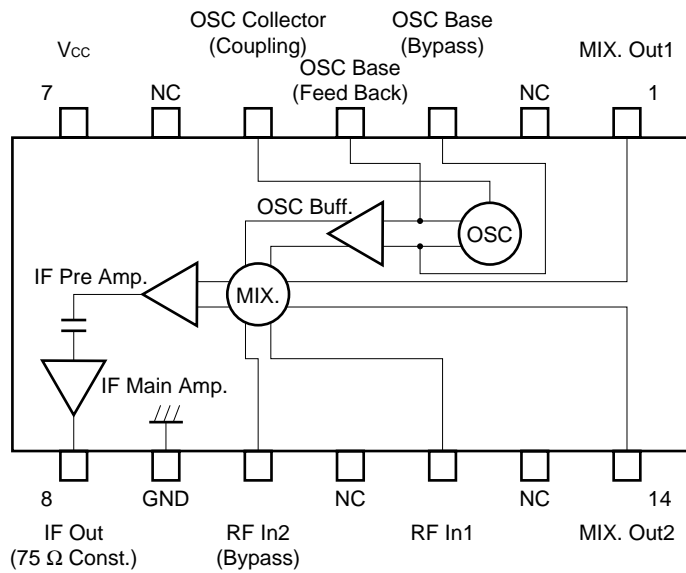
(Part number for sample order: μ PC1694GR)

Caution Electro-static sensitive devices

The information in this document is subject to change without notice. Before using this document, please confirm that this is the latest version.

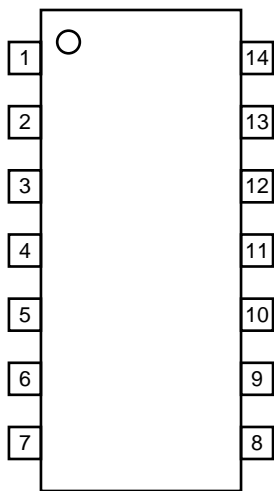
Not all devices/types available in every country. Please check with local NEC representative for availability and additional information.

INTERNAL BLOCK DIAGRAM



PIN CONFIGURATION

(Top View)



1. MIX output 1
2. GND (Non Connection)
3. OSC base (bypass)
4. OSC base (feedback)
5. OSC collector (coupling)
(MIX/IF Amp. switch)
6. GND (Non Connection)
7. Vcc
8. IF output (75 Ω)
9. GND
10. RF input 2 (bypass)
11. GND (Non Connection)
12. RF input 1
13. GND (Non Connection)
14. MIX output 2

★ ABSOLUTE MAXIMUM RATINGS (T_A = +25°C)

Parameter	Symbol	Conditions	Rating	Unit
Supply Voltage	V _{cc}		6.0	V
Power Dissipation	P _d	T _A = +85°C Note	325	mW
Operating Ambient Temperature	T _A		-40 to +85	°C
Storage Temperature	T _{stg}		-65 to +150	°C

Note Mounted on 50 × 50 × 1.6-mm epoxy glass PWB, with copper patterning on both sides.

★ RECOMMENDED OPERATING RANGE

Parameter	Symbol	MIN.	TYP.	MAX.	Unit
Supply Voltage	V _{CC}	4.5	5.0	5.5	V
Operating Ambient Temperature	T _A	-40	+25	+85	°C

ELECTRICAL CHARACTERISTICS (T_A = +25°C, V_{CC} = 5 V)

Parameter	Symbol	Test Conditions	MIN.	TYP.	MAX.	Unit
Circuit Current 1	I _{CC1}	No input signal Note 1	32	40	48	mA
Mixer Output Voltage	V _{MIX}	1-14 pin voltage, No input signal Note 1	-30	0	+30	mV
Conversion Gain 1	CG1	f _{RF} = 55 to 470 MHz, f _{IF} = 50 MHz P _{RF} = -40 dBm RF Input Terminal: Non Tuned Note 2	14	18	21	dB
Conversion Gain 2	CG2	f _{RF} = 470 to 890 MHz, f _{IF} = 50 MHz P _{RF} = -40 dBm RF Input Terminal: Non Tuned Note 3	14	18	21	dB
Noise Figure 1	NF1	f _{RF} = 55 to 470 MHz, f _{IF} = 50 MHz RF Input Terminal: Non Tuned Note 2	—	12.5	15.0	dB
Noise Figure 2	NF2	f _{RF} = 470 to 890 MHz, f _{IF} = 50 MHz RF Input Terminal: Non Tuned Note 3	—	13.5	16.0	dB
Output Power 1	P _{O(sat)1}	f _{RF} = 470 MHz, f _{IF} = 50 MHz, P _{RF} = 0 dBm Note 2	+8	+10	—	dBm
Output Power 2	P _{O(sat)2}	f _{RF} = 890 MHz, f _{IF} = 50 MHz, P _{RF} = 0 dBm Note 3	+8	+10	—	dBm
Circuit Current 2 (U/IF)	I _{CC2}	No input signal Note 1	32	40	48	mA
Power Gain (U/IF)	G _P	f _{in} = 50 MHz, P _{in} = -40 dBm Note 2	17	21	24	dB
Noise Figure 3 (U/IF)	NF3	f _{in} = 50 MHz Note 2	—	12.0	15.0	dB

- Notes 1. By test circuit 1
- 2. By test circuit 2
- 3. By test circuit 3

STANDARD CHARACTERISTICS (FOR REFERENCE) (T_A = +25°C, V_{CC} = 5 V)

Parameter	Symbol	Test Conditions	Reference Value	Unit
Conversion Gain 3	CG3	f _{RF} = 55 MHz, f _{IF} = 50 MHz, P _{RF} = -40 dBm RF Input Terminal: Tuned Note 1	24.5	dB
Conversion Gain 4	CG4	f _{RF} = 200 MHz, f _{IF} = 50 MHz, P _{RF} = -40 dBm RF Input Terminal: Tuned Note 1	24.5	dB
Conversion Gain 5	CG5	f _{RF} = 470 MHz, f _{IF} = 50 MHz, P _{RF} = -40 dBm RF Input Terminal: Tuned Note 1	23.0	dB
Conversion Gain 6	CG6	f _{RF} = 890 MHz, f _{IF} = 50 MHz, P _{RF} = -40 dBm RF Input Terminal: Tuned Note 2	20.0	dB
1% Cross-modulation Distortion 1	CM1	f _{RF} = 55 to 470 MHz, f _{IF} = 50 MHz Note 1, 3	103	dBμ
1% Cross-modulation Distortion 2	CM2	f _{RF} = 470 to 890 MHz, f _{IF} = 50 MHz Note 2, 3	100	dBμ
1% Cross-modulation Distortion 3 (U/IF)	CM3	f _{RF} = 50 MHz Note 1, 4	103	dBμ
Oscillation Frequency Stability 1	f _{stb1}	V _{CC} ± 10%, f _{osc} = 100 to 520 MHz Note 1	±100	kHz
Oscillation Frequency Stability 2	f _{stb2}	V _{CC} ± 10%, f _{osc} = 520 to 940 MHz Note 2	±200	
Oscillation Stop (Start) Voltage 1	V _{osc1}	f _{osc} = 100 to 520 MHz Note 1	2.5	V
Oscillation Stop (Start) Voltage 2	V _{osc2}	f _{osc} = 520 to 940 MHz Note 2	3.0	

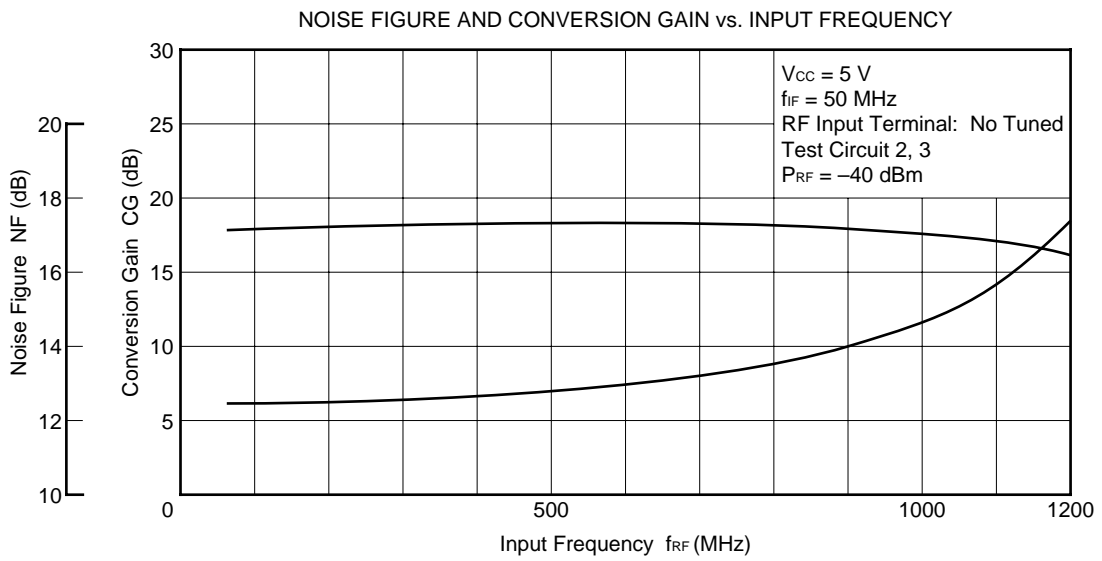
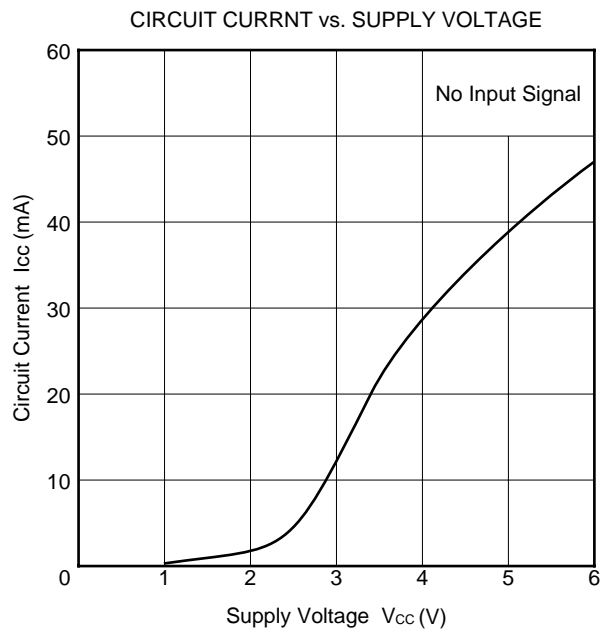
Notes 1. By test circuit 2

2. By test circuit 3

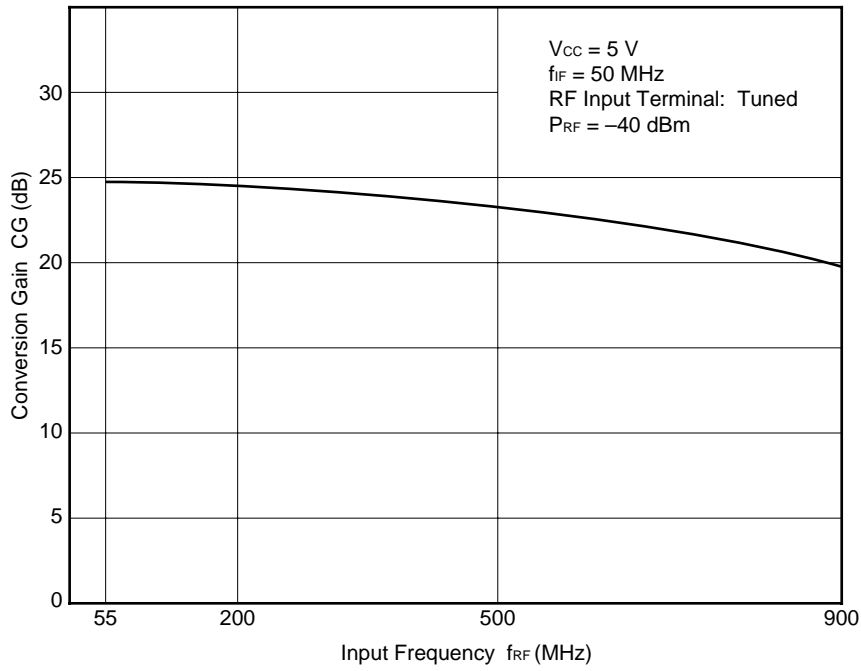
3. f_{undes} = f_{RF} ± 12 MHz, P_{RF} = -31 dBm, f_{IF} = 50 MHz, AM: 100 kHz, 30%Mod., S/I Ratio = 46 dBc, Output 75 Ω Open

4. f_{in} = 50 MHz, f_{undes} = 62 MHz, P_{in} = -31 dBm, AM: 100 kHz, 30% Mod., S/I Ratio = 46 dBc, Output 75 Ω Open

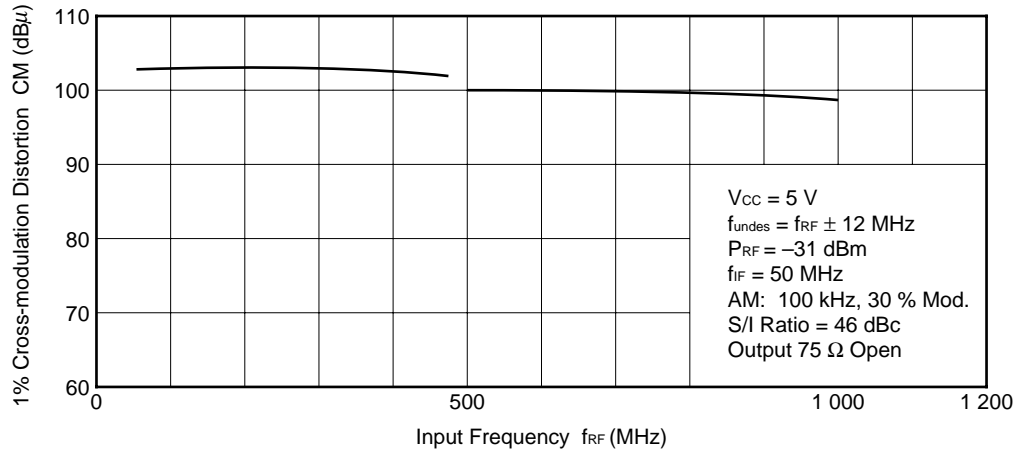
TYPICAL CHARACTERISTICS (T_A = +25°C)



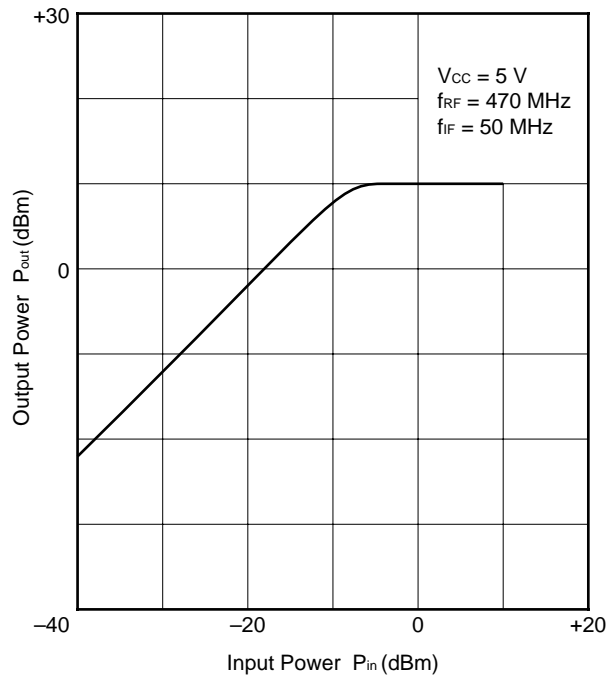
CONVERSION GAIN vs. INPUT FREQUENCY



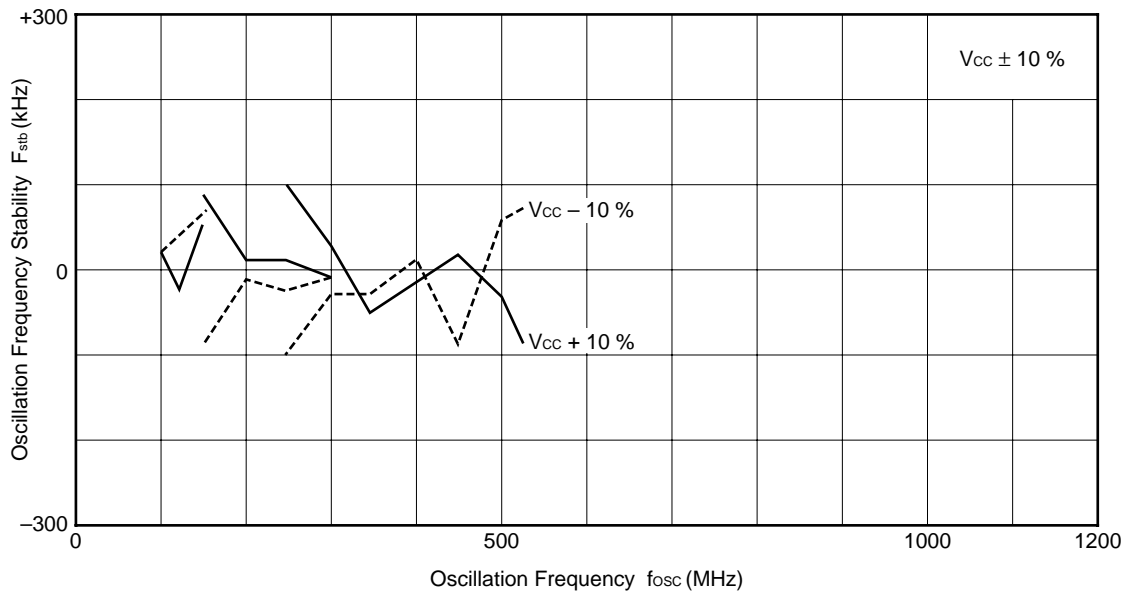
1% CROSS-MODULATION DISTORTION vs. INPUT FREQUENCY



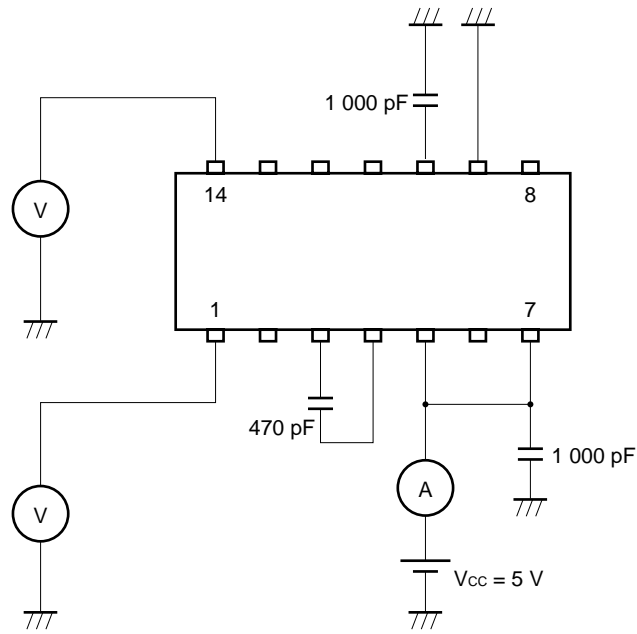
OUTPUT POWER vs. INPUT POWER



OSC-FREQUENCY STABILITY vs. OSCILLATION FREQUENCY

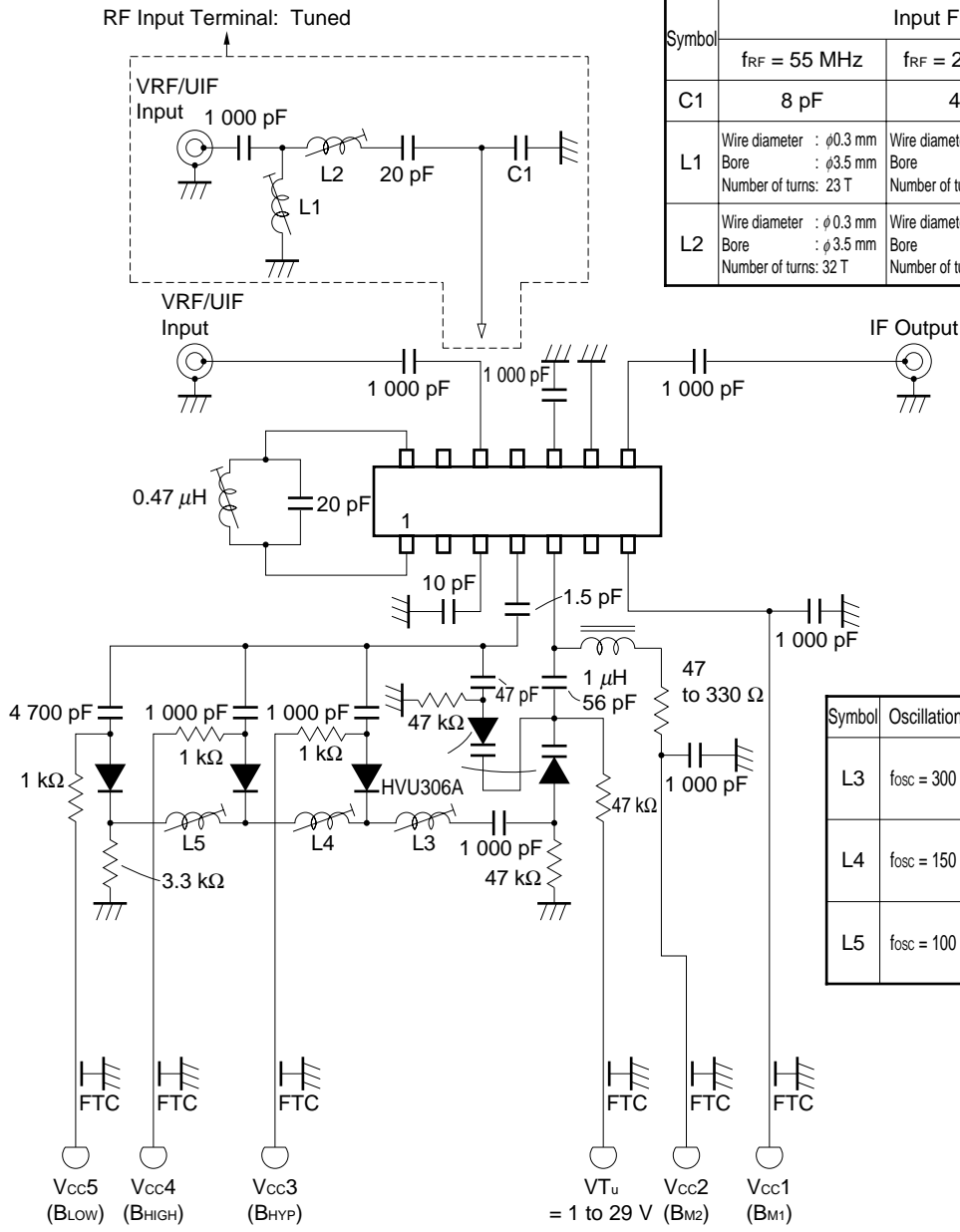


TEST CIRCUIT 1



When measuring circuit current with U/IF Amp, leave pin 5 open.

TEST CIRCUIT 2

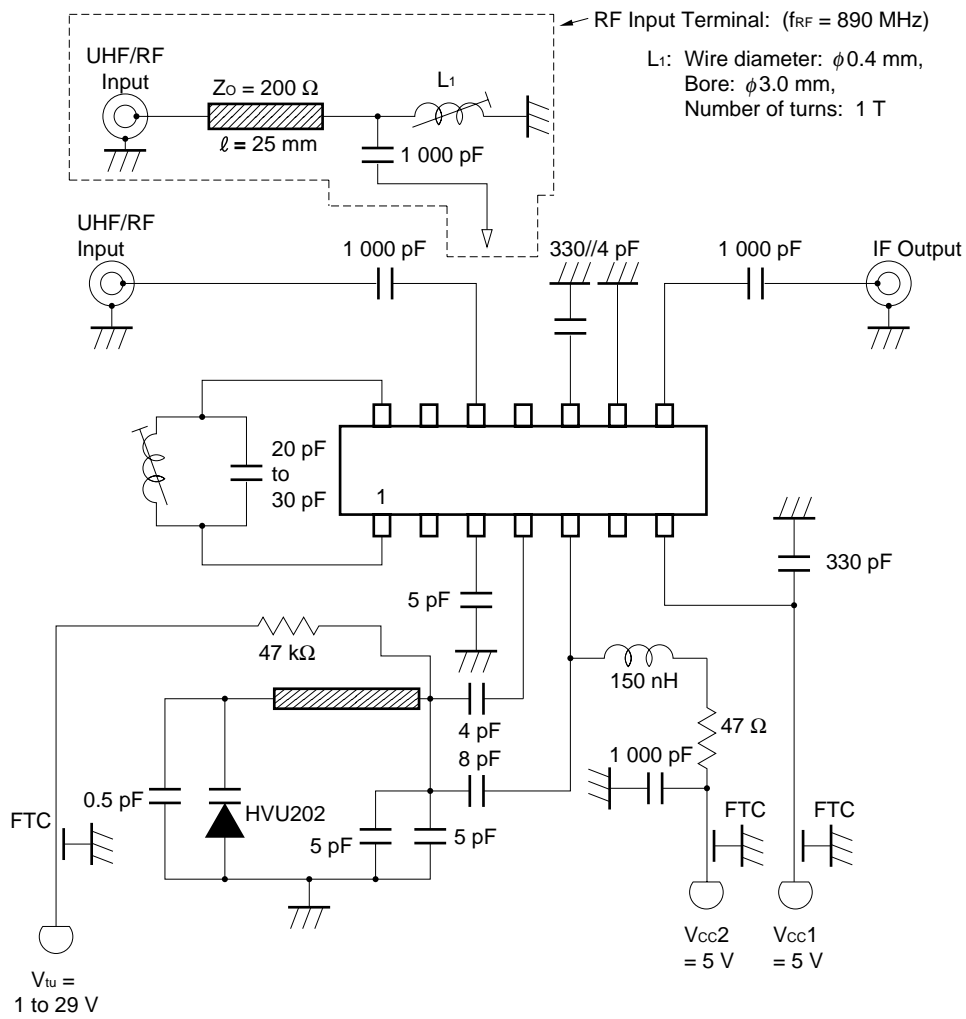


Symbol	Input Frequency		
	$f_{RF} = 55 \text{ MHz}$	$f_{RF} = 200 \text{ MHz}$	$f_{RF} = 470 \text{ MHz}$
C1	8 pF	4 pF	2 pF
L1	Wire diameter : $\phi 0.3 \text{ mm}$ Bore : $\phi 3.5 \text{ mm}$ Number of turns: 23 T	Wire diameter : $\phi 0.4 \text{ mm}$ Bore : $\phi 3.2 \text{ mm}$ Number of turns: 3 T	Wire diameter : $\phi 0.4 \text{ mm}$ Bore : $\phi 3.5 \text{ mm}$ Number of turns: 2 T
L2	Wire diameter : $\phi 0.3 \text{ mm}$ Bore : $\phi 3.5 \text{ mm}$ Number of turns: 32 T	Wire diameter : $\phi 0.3 \text{ mm}$ Bore : $\phi 4.0 \text{ mm}$ Number of turns: 7 T	Wire diameter : $\phi 0.5 \text{ mm}$ Bore : $\phi 3.5 \text{ mm}$ Number of turns: 2 T

Symbol	Oscillation Frequency	Coil used
L3	$f_{osc} = 300 \text{ to } 520 \text{ MHz}$	Wire diameter : $\phi 0.5 \text{ mm}$ Bore : $\phi 3.0 \text{ mm}$ Number of turns: 2 T
L4	$f_{osc} = 150 \text{ to } 300 \text{ MHz}$	Wire diameter : $\phi 0.4 \text{ mm}$ Bore : $\phi 2.5 \text{ mm}$ Number of turns: 3 T
L5	$f_{osc} = 100 \text{ to } 150 \text{ MHz}$	Wire diameter : $\phi 0.4 \text{ mm}$ Bore : $\phi 3.0 \text{ mm}$ Number of turns: 9 T

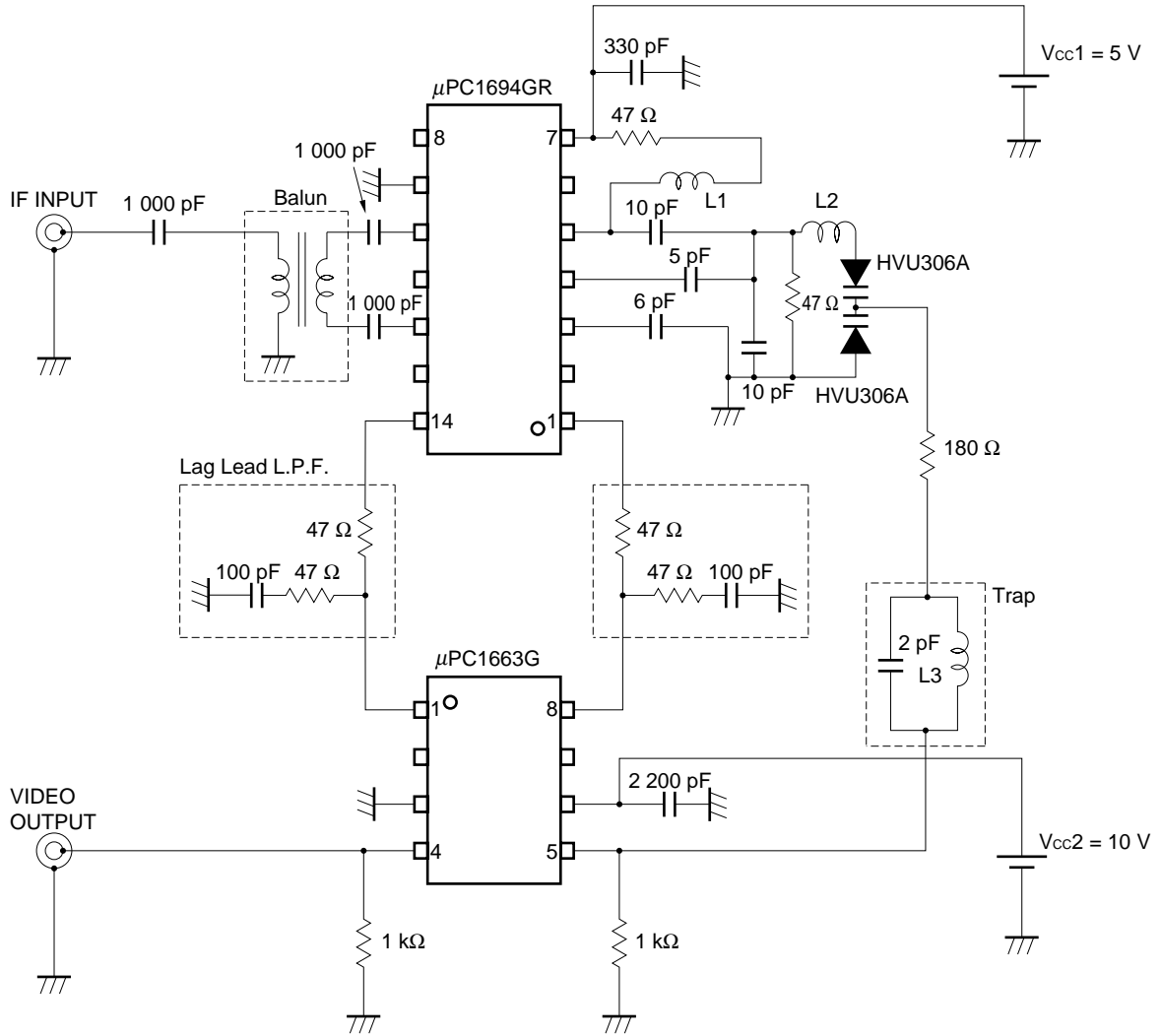
	Vcc1 (BM1)	Vcc2 (BM2)	Vcc3 (BHYP)	Vcc4 (BHIGH)	Vcc5 (BLOW)
VLOW	5 V	5 V	OPEN	OPEN	5 V
VHIGH	5 V	5 V	OPEN	5 V	OPEN
VHYPER	5 V	5 V	5 V	OPEN	OPEN
U/IF	5 V	OPEN	OPEN	OPEN	OPEN

TEST CIRCUIT 3



APPLICATION CIRCUIT EXAMPLE 1

For FM demodulator (Example using μ PC1694GR and μ PC1663G)



- L1: Wire diameter: ϕ 0.3 mm, Bore: ϕ 1.5 mm, Number of turns: 13 T
- L2: Wire diameter: ϕ 0.4 mm, Bore: ϕ 3.5 mm, Number of turns: 2 T
- L3: Wire diameter: ϕ 0.3 mm, Bore: ϕ 1.8 mm, Number of turns: 7 T
- Balun: TDK WBT5,5P5-C10129E

APPLICATION CIRCUIT EXAMPLE 2

For TV/VCR TUNER

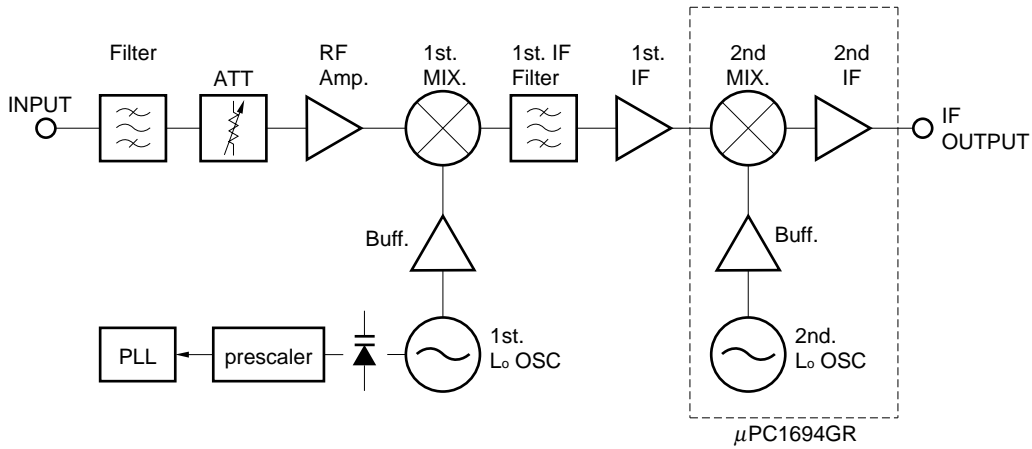
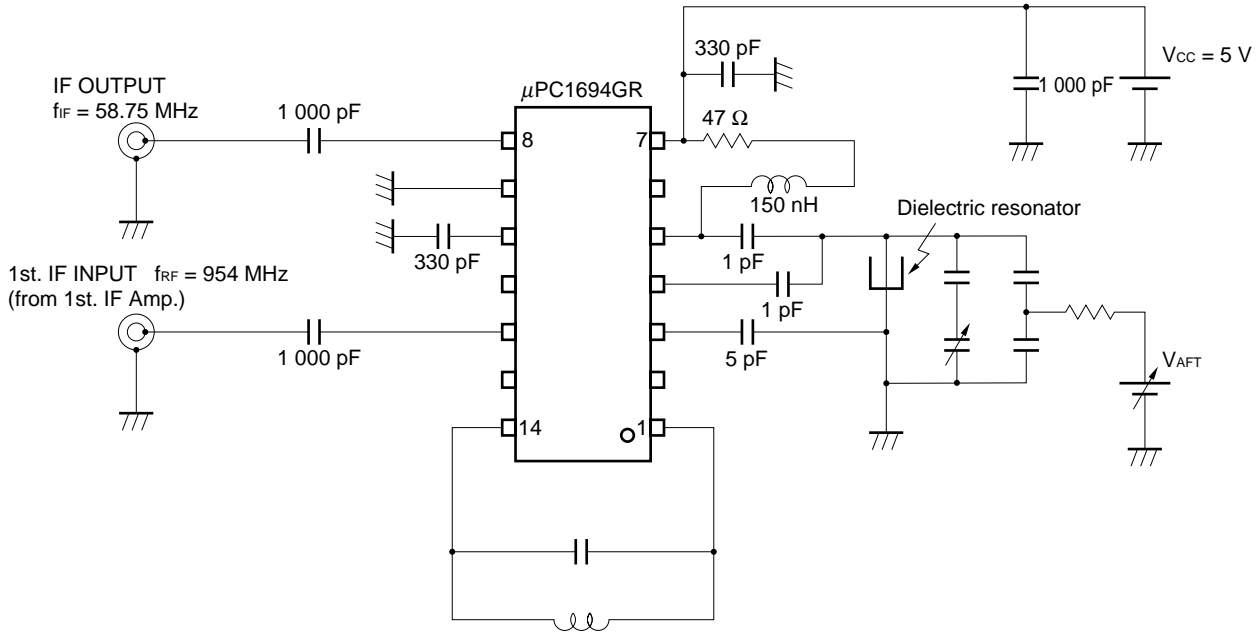
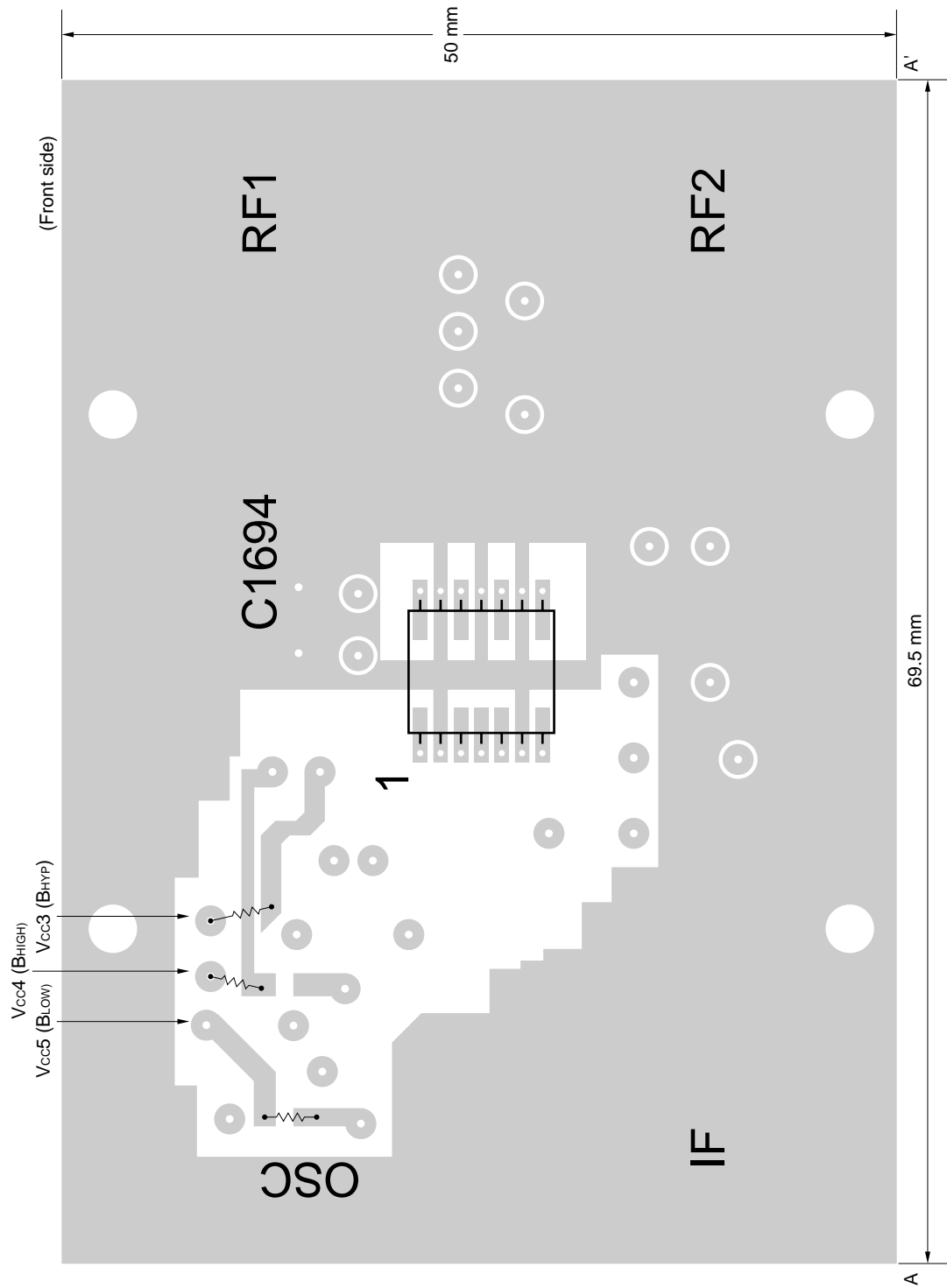
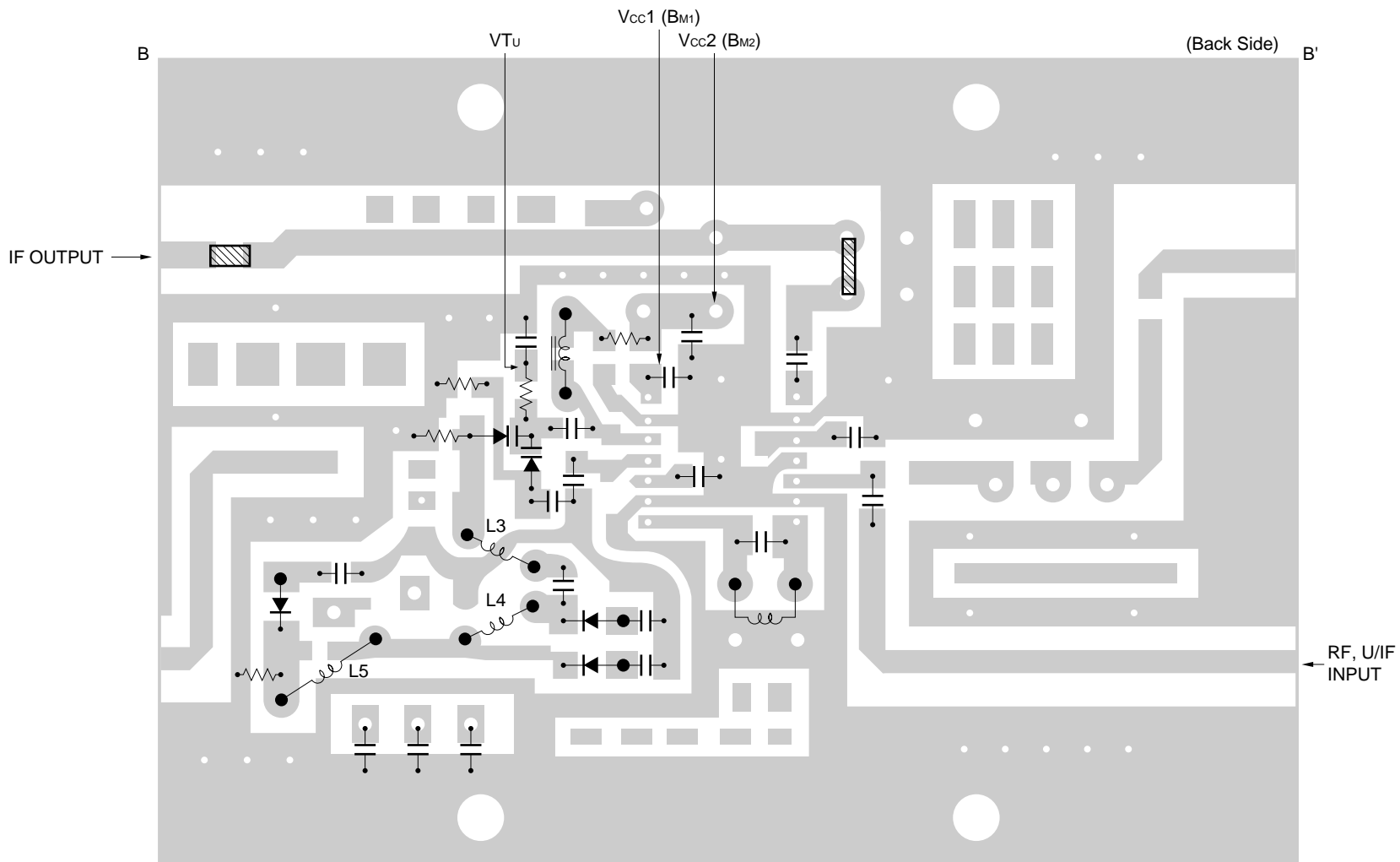


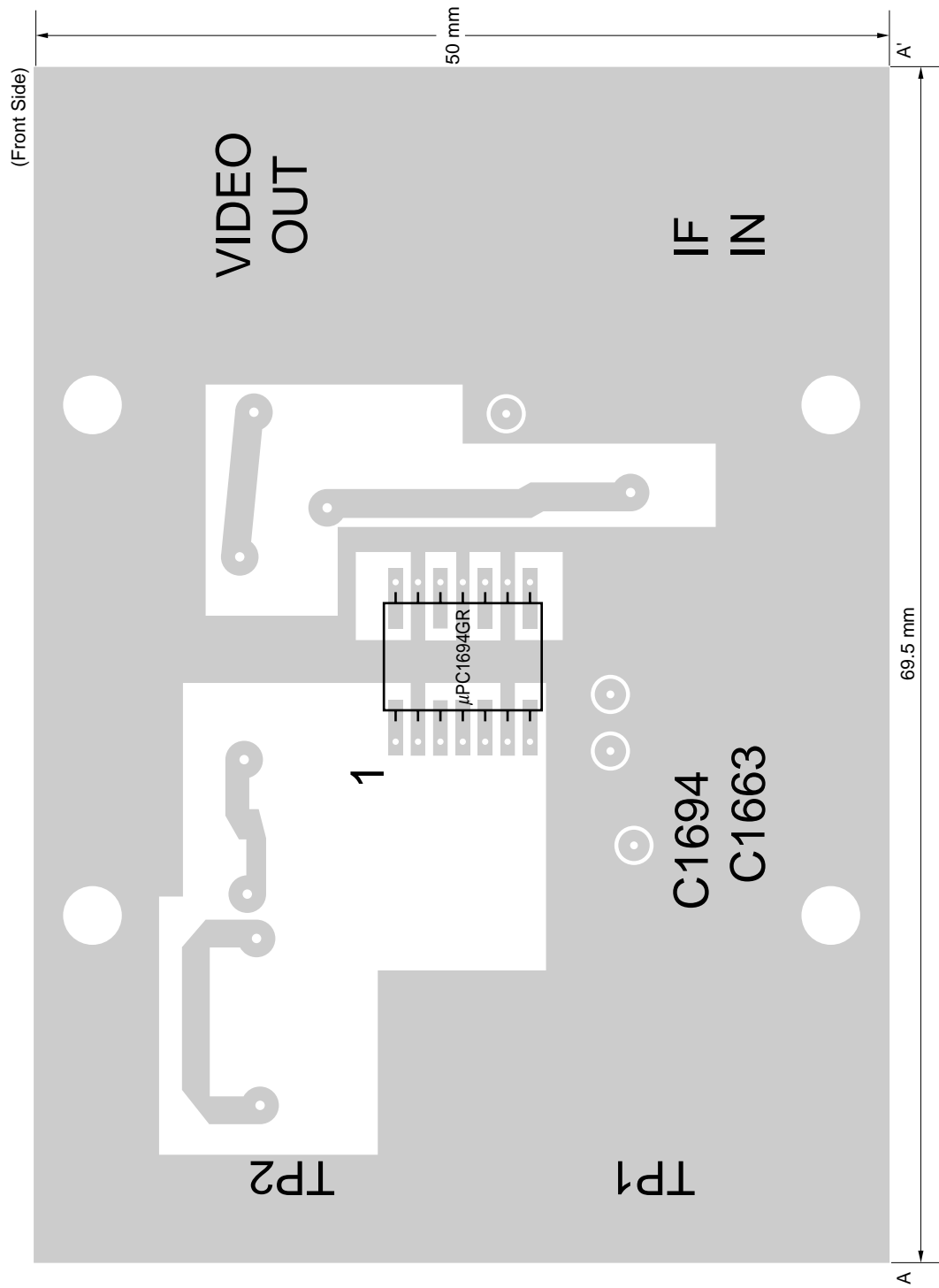
ILLUSTRATION OF THE APPLICATION CIRCUIT EXAMPLE 2 ASSEMBLED ON EVALUATION BOARD

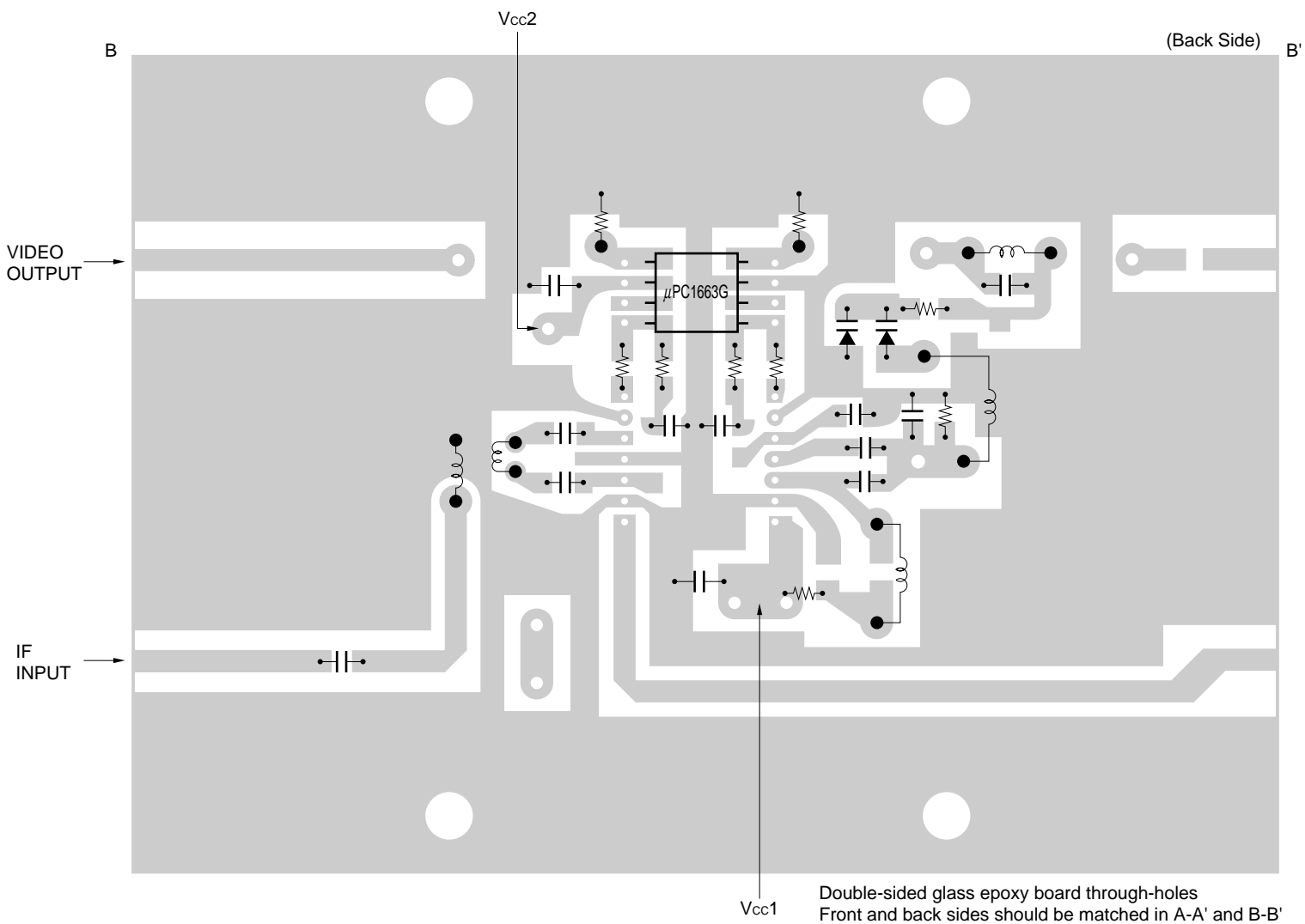




Double-sided glass epoxy board through-holes
 Front and back sides should be matched in A-A' and B-B'
 ▨: short-circuited strip.

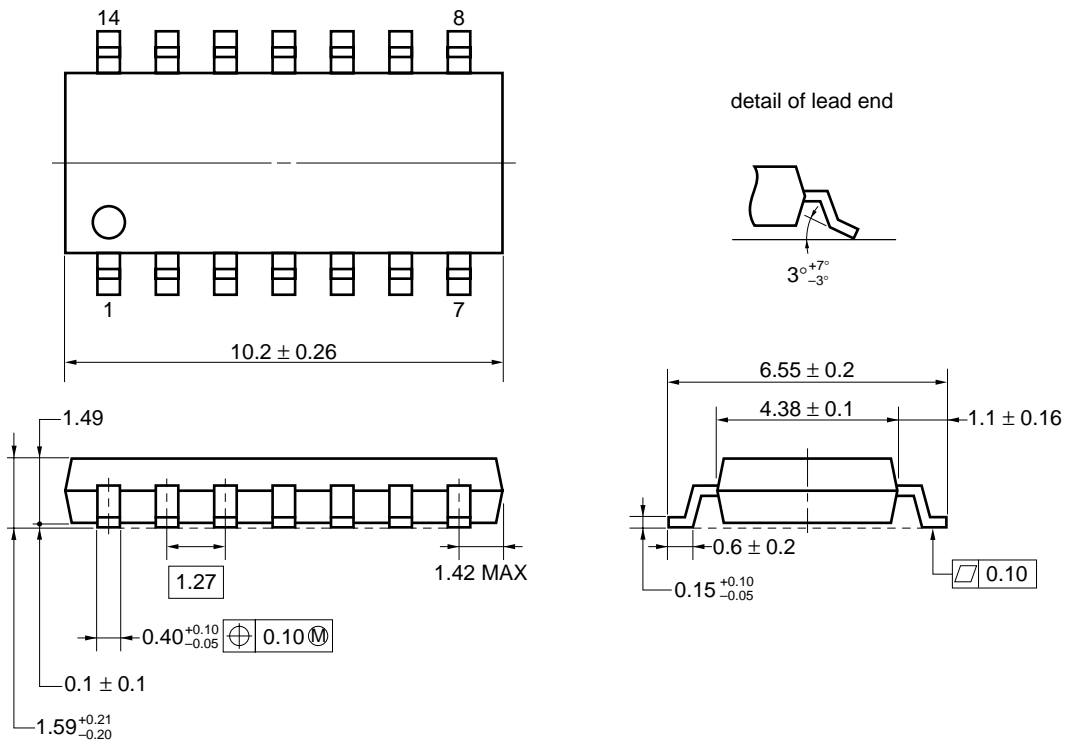
ILLUSTRATION OF THE APPLICATION CIRCUIT EXAMPLE 1 ASSEMBLED ON EVALUATION BOARD





★ PACKAGE DIMENSION

14 PIN PLASTIC SOP (225 mil)



NOTE Each lead centerline is located within 0.10 mm of its true position (T.P.) at maximum material condition.

NOTE ON CORRECT USE

- (1) Since this IC uses high frequency process, care is required against the excessive input of static electricity, etc.
- (2) Use the shortest possible wiring for the GND pin.
- (3) Use the widest possible earth pattern to avoid increase of ground impedance (because it may cause abnormal oscillation).
- (4) Insert a bypass capacitor for the Vcc pin (example: 1 000 pF, 2 200 pF, etc.)
- (5) Abnormal oscillation may occur depending on the values of the choke coil and floating capacitance. Therefore, insert a resistor between the power supply and choke coil. (See the application circuit example.)

RECOMMENDED SOLDERING CONDITIONS

This product should be soldered under the following recommended conditions. For soldering methods and conditions other than those recommended below, contact your NEC sales representative.

Soldering Method	Soldering Conditions	Recommended Condition Symbol
Infrared Reflow	Package peak temperature: 235 °C or below Time: 30 seconds or less (at 210 °C) Count: 3, Exposure limit: None ^{Note}	IR35-00-3
VPS	Package peak temperature: 215 °C or below Time: 40 seconds or less (at 200 °C) Count: 3, Exposure limit: None ^{Note}	VP15-00-3
Wave Soldering	Soldering bath temperature: 260 °C or below Time: 10 seconds or less Count: 1, Exposure limit: None ^{Note}	WS60-00-1
Partial Heating	Pin temperature: 300 °C Time: 3 seconds or less (per side of device) Exposure limit: None ^{Note}	—

Note After opening the dry pack, keep it in a place below 25 °C and 65 % RH for the allowable storage period.

Caution Do not use different soldering methods together (except for partial heating).

For details of recommended soldering conditions for surface mounting, refer to information document SEMICONDUCTOR DEVICE MOUNTING TECHNOLOGY MANUAL (C10535E).

[MEMO]

- **The information in this document is subject to change without notice. Before using this document, please confirm that this is the latest version.**
 - No part of this document may be copied or reproduced in any form or by any means without the prior written consent of NEC Corporation. NEC Corporation assumes no responsibility for any errors which may appear in this document.
 - NEC Corporation does not assume any liability for infringement of patents, copyrights or other intellectual property rights of third parties by or arising from use of a device described herein or any other liability arising from use of such device. No license, either express, implied or otherwise, is granted under any patents, copyrights or other intellectual property rights of NEC Corporation or others.
 - Descriptions of circuits, software, and other related information in this document are provided for illustrative purposes in semiconductor product operation and application examples. The incorporation of these circuits, software, and information in the design of the customer's equipment shall be done under the full responsibility of the customer. NEC Corporation assumes no responsibility for any losses incurred by the customer or third parties arising from the use of these circuits, software, and information.
 - While NEC Corporation has been making continuous effort to enhance the reliability of its semiconductor devices, the possibility of defects cannot be eliminated entirely. To minimize risks of damage or injury to persons or property arising from a defect in an NEC semiconductor device, customers must incorporate sufficient safety measures in its design, such as redundancy, fire-containment, and anti-failure features.
 - NEC devices are classified into the following three quality grades:
"Standard", "Special", and "Specific". The Specific quality grade applies only to devices developed based on a customer designated "quality assurance program" for a specific application. The recommended applications of a device depend on its quality grade, as indicated below. Customers must check the quality grade of each device before using it in a particular application.
 - Standard: Computers, office equipment, communications equipment, test and measurement equipment, audio and visual equipment, home electronic appliances, machine tools, personal electronic equipment and industrial robots
 - Special: Transportation equipment (automobiles, trains, ships, etc.), traffic control systems, anti-disaster systems, anti-crime systems, safety equipment and medical equipment (not specifically designed for life support)
 - Specific: Aircraft, aerospace equipment, submersible repeaters, nuclear reactor control systems, life support systems or medical equipment for life support, etc.
- The quality grade of NEC devices is "Standard" unless otherwise specified in NEC's Data Sheets or Data Books. If customers intend to use NEC devices for applications other than those specified for Standard quality grade, they should contact an NEC sales representative in advance.