

Monolithic crystal filter

MQF10.7-3000/02



Application

- 4 pol filter
- i.f.- filter
- use in mobile and stationary transceivers

Limiting values

		Unit	Value
Center frequency	f_0	MHz	10.7
Insertion loss		dB	≤ 1.5
Pass band at 3.0 dB		kHz	± 15.0
Ripple in pass band	$f_0 \pm 10.0$ kHz	dB	≤ 1.0
Stop band attenuation	$f_0 \pm 40$ kHz	dB	≥ 30
	$f_0 \pm 50$ kHz	dB	> 40

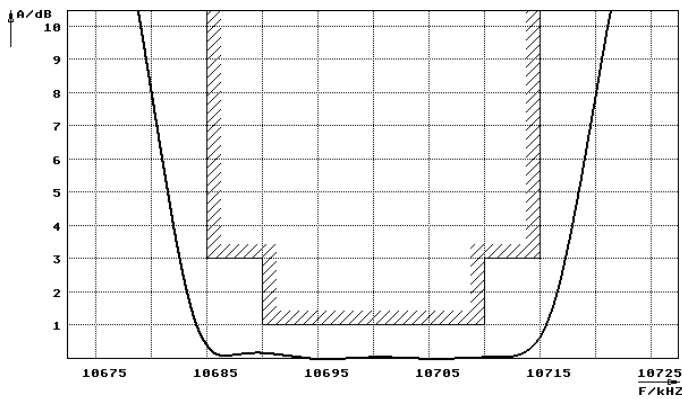
Terminating impedance Z

R1 C1		Ohm/pF	5500 -1
R2 C2		Ohm/pF	5500 -1
Coupling capacitance	Ck	pF	0

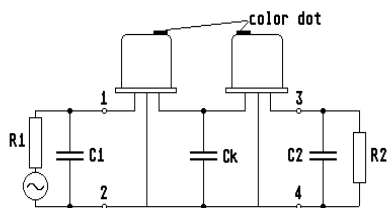
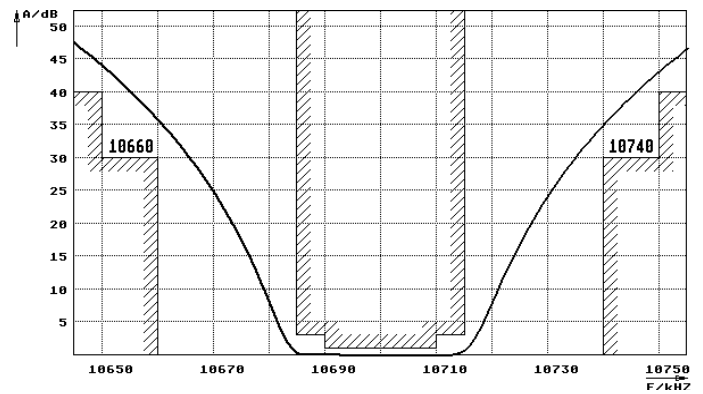
Operating temp. range		° C	-20... +70
-----------------------	--	-----	------------

Characteristics MQF10.7-3000/02

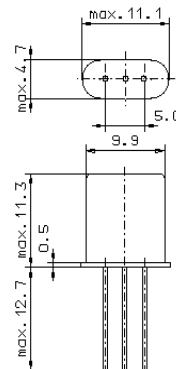
Pass band



Stop band



Pin connections: 1 Input
2 Input-E
3 Output
4 Output-E



GH3

