

**PLEASE CHECK WWW.MOLEX.COM FOR LATEST PART INFORMATION**

**Part Number:** [0008650114](#)  
**Status:** **Active**  
**Overview:** [kk](#)  
**Description:** 3.96mm (.156") Pitch KK® Crimp Terminal 2478, 18-24 AWG, Reel, Phosphor Bronze, 0.38µm (15µ") Selective Gold (Au)

**Documents:**

[Drawing \(PDF\)](#) [RoHS Certificate of Compliance \(PDF\)](#)  
[Product Specification PS-08-50 \(PDF\)](#)

**General**

Product Family Crimp Terminals  
 Series [2478](#)  
 Crimp Quality Equipment Yes  
 Overview [kk](#)  
 Product Name KK®

**Physical**

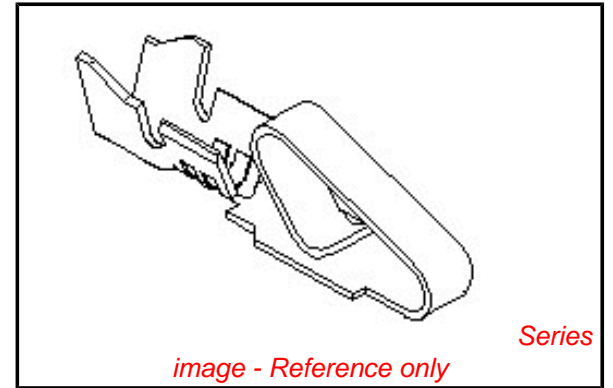
Gender Female  
 Material - Metal Phosphor Bronze  
 Material - Plating Mating Gold  
 Material - Plating Termination Gold  
 Packaging Type Reel  
 Plating min: Mating (µin) 15  
 Plating min: Mating (µm) 0.375  
 Plating min: Termination (µin) 15  
 Plating min: Termination (µm) 0.375  
 Termination Interface: Style Crimp or Compression  
 Wire Insulation Diameter 2.79mm (.110") max.  
 Wire Size AWG 18, 20, 22, 24  
 Wire Size mm² N/A

**Material Info**

Old Part Number 2478-3-(555)

**Reference - Drawing Numbers**

Product Specification PS-08-50  
 Sales Drawing SD-2478



*image - Reference only*

**EU RoHS**

**ELV and RoHS Compliant**  
**REACH SVHC**  
**Contains SVHC: No**  
**Halogen-Free Status**

**China RoHS**



**Need more information on product environmental compliance?**

Email [productcompliance@molex.com](mailto:productcompliance@molex.com)  
 For a multiple part number RoHS Certificate of Compliance, [click here](#)

Please visit the [Contact Us](#) section for any non-product compliance questions.

**Search Parts in this Series**

[2478Series](#)

**Use With**

[2574](#) , [2139](#) , [41695](#) , [3069](#) , [6422](#) , [5265](#) , [5239](#)

**Application Tooling | FAQ**

*Tooling specifications and manuals are found by selecting the products below. Crimp Height Specifications are then contained in the Application Tooling Specification document.*

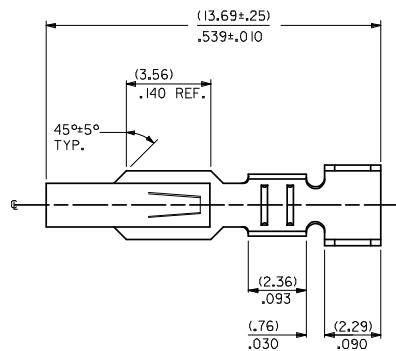
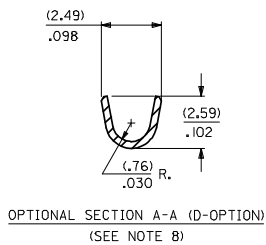
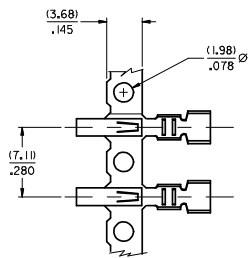
**Global**

Description	Product #
Extraction Tool	<a href="#">0011030016</a>
Terminator Die	<a href="#">0011402096</a>
Hand Crimper	<a href="#">0638117500</a>
FineAdjust™	<a href="#">0639007200</a>
Applicator for KK® and Trifurcon™ Crimp Terminal	
FineAdjust for Mini-Fit Jr.™	<a href="#">0639007300</a>

Crimp Terminals  
<BR>Special  
cut-off tab width  
for 2478 Series  
terminals using the  
7241 Series IDT  
housing only. 2478  
Series terminals  
are not rated for  
USCAR21compliance.

This document was generated on 06/07/2010

**PLEASE CHECK [WWW.MOLEX.COM](http://WWW.MOLEX.COM) FOR LATEST PART INFORMATION**



2478- \* \* \* \* \*

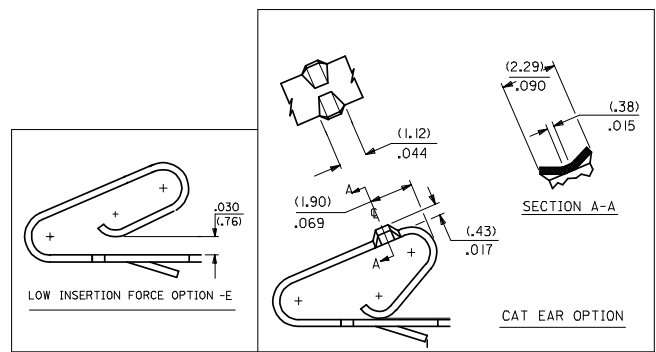
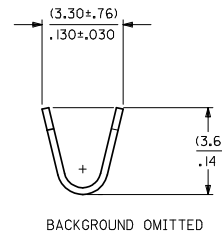
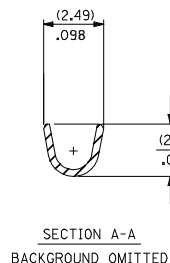
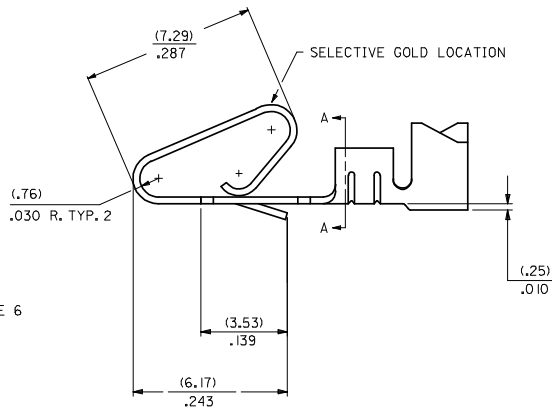
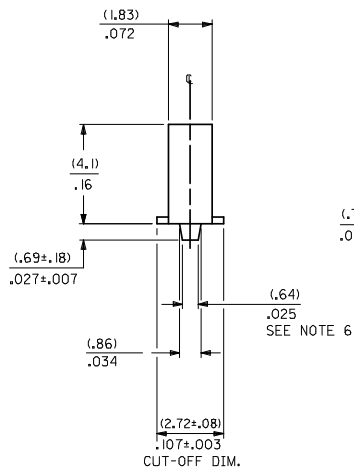
MATERIAL CODE  
(.27)/.0106 THK  
1=BRASS  
3=PHOS BRONZE

OPTION CODE  
BLANK=AS SHOWN  
C=CAT EAR OPTION  
D=OPTIONAL CONDUCTOR CRIMP (FOR IRELAND) (SEE OPT. SECTION A-A) WITHOUT CAT EARS  
E=LOW INSERTION FORCE OPTION

WINDING SPEC.  
A=PER ES-339-A  
BLANK=PER ES-339-B  
L=LOOSE

FINISH: PER SDES-88  
(P909) \*OVERALL HOT TIN DIP: 2.54 MICROMETERS MIN.  
(550) SELECT GOLD: 0.38 MICROMETERS MIN.  
OVERALL GOLD FLASH: 0.05 MICROMETERS MIN.  
OVERALL NICKEL UNDERPLATE: 0.76 MICROMETERS MIN.  
(555) SELECT GOLD: 0.38 MICROMETERS MIN.  
OVERALL NICKEL UNDERPLATE: 0.76 MICROMETERS MIN.

\*THE PRIMARY SHIPPING CARTON WILL BE LABELED "COMPLIANT TO RoHS DIRECTIVE 2002/95/EC AND ELV ANNEX II OF DIRECTIVE 2000/53/EC". CARTONS WITHOUT THIS LABEL MAY CONTAIN PRODUCT WITH TIN/LEAD PLATING.



- NOTES:
- CRIMP ACCEPTS 18 TO 24 GA. WIRE WITH (2.79)/.110 MAX. INSUL. DIA.; WHEN USED WITH 2574 CONNECTOR, (2.54)/.100 MAX. INSUL. DIA. WHEN USED WITH 2139 CONNECTOR; HOUSING 41695 IS RECOMMENDED FOR OVER (2.54)/.100 DIA. INSULATION. CRIMP ACCEPTS (3.00)/.118 MAX. INSUL. DIA. WITH SPECIAL TOOLING.
  - DIMENSIONS GIVEN ACROSS CENTERLINES ARE SYMMETRICAL ABOUT THOSE CENTERLINES WITHIN HALF THE TOTAL TOLERANCE.
  - 
  - 
  - 
  - (.86±.05)/.034±.002 IS AN OPTIONAL DESIGN.
  - THIS PART CONFORMS TO PRODUCT SPEC. 08-50.
  - CONDUCTOR CRIMP FOR 16 AWG. WIRE WITH .110 MAX. INSULATION DIA.

CHANGE TO ME10 EC NO: UCP2005-0902 DRAWN BY: DRWADRATNOL 2004/11/16 CHKD BY: CHKDSAMIEC 2006/03/28 APPROVED BY: APPRMMARCOLIS 2004/10/28	QUALITY SYMBOLS	GENERAL TOLERANCES (UNLESS SPECIFIED)	DIMENSION STYLE	SCALE	DESIGN UNITS	THIRD ANGLE PROJECTION														
	▼=0 ▽=0	<table border="1"> <tr> <th></th> <th>mm</th> <th>INCH</th> </tr> <tr> <td>4 PLACES</td> <td>±---</td> <td>±---</td> </tr> <tr> <td>3 PLACES</td> <td>±---</td> <td>±.010</td> </tr> <tr> <td>2 PLACES</td> <td>±0.25</td> <td>±.014</td> </tr> <tr> <td>1 PLACE</td> <td>±0.36</td> <td>±---</td> </tr> </table> ANGULAR ±1/2°		mm	INCH	4 PLACES	±---	±---	3 PLACES	±---	±.010	2 PLACES	±0.25	±.014	1 PLACE	±0.36	±---	IN/MM DRAWN BY: SAMIEC 06/03/86 CHECKED BY: PATEL 06/03/86 APPROVED BY: LENZ 06/03/86	DATE	INCH
	mm	INCH																		
4 PLACES	±---	±---																		
3 PLACES	±---	±.010																		
2 PLACES	±0.25	±.014																		
1 PLACE	±0.36	±---																		
	DRAFT WHERE APPLICABLE MUST REMAIN WITHIN DIMENSIONS	MATERIAL NO. SEE CHART	DOCUMENT NO. SD-2478	MOLEX INCORPORATED		SHEET NO. 1 OF 2														
		THIS DRAWING CONTAINS INFORMATION THAT IS PROPRIETARY TO MOLEX INCORPORATED AND SHOULD NOT BE USED WITHOUT WRITTEN PERMISSION																		

