
**26.4 cm (10.4 Type), 640 × 480 Pixels, 262,144 Colors,
Incorporated Two-Lamp/Edge-Light Type Backlight
Wide Viewing Angle**

NL6448BC33-46 module is composed of the amorphous silicon thin film transistor liquid crystal display (a-Si TFT LCD) panel structure with driver LSIs for driving the TFT (Thin Film Transistor) array and a backlight unit.

The a-Si TFT LCD panel structure is injected liquid crystal material into a narrow gap between the TFT array glass substrate and a color-filter glass substrate.

Color (Red, Green, Blue) data signals from a host system (e.g. PC, signal generator, etc.) are modulated into best form for active matrix system by a signal processing board, and sent to the driver LSIs which drive the individual TFT arrays.

The TFT array as an electro-optical switch regulates the amount of transmitted light from the backlight assembly, when it is controlled by data signals. Color images are created by regulating the amount of transmitted light through the TFT array of red, green and blue dots.

APPLICATIONS

- Industrial PC
- Display terminal for control system

FEATURES

- High luminance
- Wide viewing angle
- High contrast
- 6-bit digital RGB signals
- Reversible-scan direction
- Edge light type
- Replaceable lamp for backlight unit (Inverter less)
- Acquisition product for UL/c-UL

CONTENTS

1. GENERAL SPECIFICATIONS.....	4
2. BLOCK DIAGRAM.....	5
3. DETAILED SPECIFICATIONS.....	6
3.1 MECHANICAL SPECIFICATIONS	6
3.2 ABSOLUTE MAXIMUM RATINGS.....	6
3.3 ELECTRICAL CHARACTERISTICS	7
3.3.1 Driving for LCD panel signal processing board.....	7
3.3.2 Working for backlight lamp.....	7
3.3.3 Power supply voltage ripple	8
3.3.4 Fuses	8
3.4 POWER SUPPLY VOLTAGE SEQUENCE.....	9
3.4.1 Sequence for LCD panel signal processing board.....	9
3.4.2 Sequence for backlight inverter (Option)	9
3.5 CONNECTIONS AND FUNCTIONS FOR INTERFACE PINS	10
3.5.1 LCD panel signal processing board.....	10
3.5.2 Backlight lamp	11
3.5.3 Positions of sockets	11
3.6 DISPLAY COLORS AND INPUT DATA SIGNALS	12
3.7 DISPLAY POSITIONS	13
3.8 SCANNING DIRECTIONS.....	13
3.9 INPUT SIGNAL TIMINGS FOR LCD PANEL SIGNAL PROCESSING BOARD	14
3.9.1 Outline of input signal timings	14
3.9.2 Detailed input signal timing chart for DE mode.....	15
3.9.3 Detailed input signal timing chart for fixed mode.....	16
3.9.4 Timing characteristics.....	17
3.10 OPTICS	18
3.10.1 Optical characteristics	18
3.10.2 Definition of contrast ratio	19
3.10.3 Definition of luminance uniformity.....	19
3.10.4 Definition of response times.....	19
3.10.5 Definition of viewing angles	19

4. RELIABILITY TESTS..... 20

5. PRECAUTIONS..... 21

5.1 MEANING OF CAUTION SIGNS..... 21

5.2 CAUTIONS..... 21

5.3 ATTENTIONS..... 21

 5.3.1 Handling of the product..... 21

 5.3.2 Environment 21

 5.3.3 Characteristics 22

 5.3.4 Other..... 22

6. OUTLINE DRAWINGS..... 23

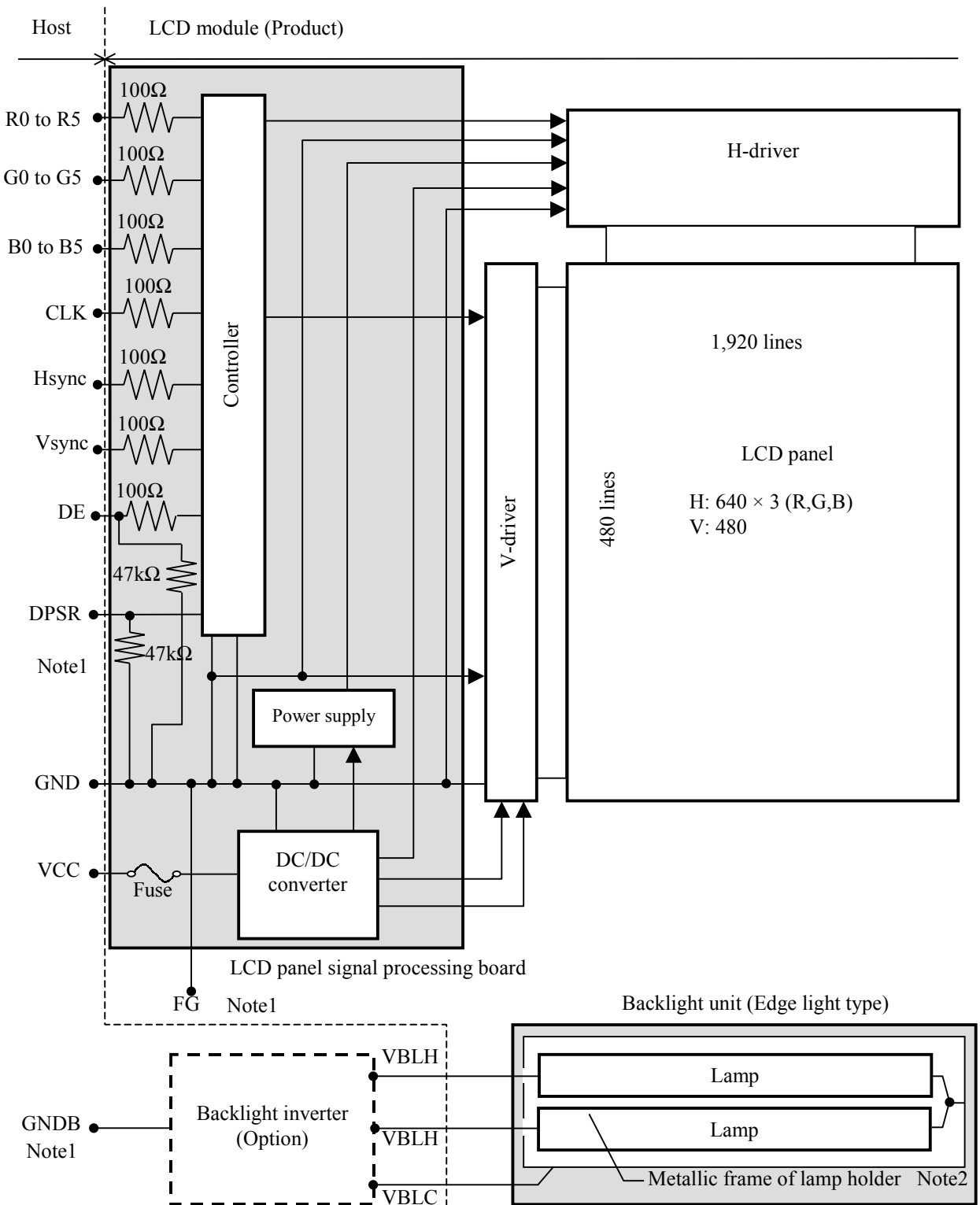
6.1 FRONT VIEW 23

6.2 REAR VIEW 24

1. GENERAL SPECIFICATIONS

Display area	211.2 (W) × 158.4 (H) mm (typ.)				
Diagonal size of display	26.4 cm (10.4 inches)				
Drive system	a-Si TFT active matrix				
Display color	262,144 colors				
Pixel	640 (H) × 480 (V) pixels				
Pixel arrangement	RGB (Red dot, Green dot, Blue dot) vertical stripe				
Dot pitch	0.1100 (W) × 0.3300 (H) mm				
Pixel pitch	0.3300 (W) × 0.3300 (H) mm				
Module size	243.0 (W) × 185.1 (H) × 11.0 (D) mm (typ.)				
Weight	530 g (typ.)				
Contrast ratio	300:1 (typ.)				
Viewing angle	At the contrast ratio 10:1 <ul style="list-style-type: none"> • Horizontal: Left side 70° (typ.), Right side 70° (typ.) • Vertical: Up side 45° (typ.), Down side 55° (typ.) 				
Designed viewing direction	At normal scan <ul style="list-style-type: none"> • Viewing direction without image reversal: up side (12 o'clock) • Viewing direction with contrast peak: down side 5° to 10° (6 o'clock) • Viewing angle with optimum grayscale ($\gamma=2.2$): normal axis 				
Polarizer surface	Non matt treatment				
Polarizer pencil-hardness	3H (min.) [by JIS K5400]				
Color gamut	At LCD panel center 43 % (typ.) [against NTSC color space]				
Response time	6 ms (typ.)				
Luminance	At 5.0mArms / lamp 350 cd/m ² (typ.)				
Signal system	6-bit digital signals for data of RGB colors, Dot clock (CLK), Data enable (DE), Horizontal synchronous signal (Hsync), Vertical synchronous signal (Vsync)				
Power supply voltage	LCD panel signal processing board: 3.3V or 5.0V				
Backlight	Edge light type: 2 cold cathode fluorescent lamps <table style="margin-left: 20px;"> <tr> <td style="border-left: 1px solid black; border-right: 1px solid black; padding: 0 5px;">Replaceable parts</td> </tr> <tr> <td style="border-left: 1px solid black; border-right: 1px solid black; padding: 0 5px;">• Lamps for backlight unit: Type No. 104LHS35</td> </tr> </table> <table style="margin-left: 20px;"> <tr> <td style="border-left: 1px solid black; border-right: 1px solid black; padding: 0 5px;">Recommended inverter (Option)</td> </tr> <tr> <td style="border-left: 1px solid black; border-right: 1px solid black; padding: 0 5px;">• Inverter: Type No. 104PW161</td> </tr> </table>	Replaceable parts	• Lamps for backlight unit: Type No. 104LHS35	Recommended inverter (Option)	• Inverter: Type No. 104PW161
Replaceable parts					
• Lamps for backlight unit: Type No. 104LHS35					
Recommended inverter (Option)					
• Inverter: Type No. 104PW161					
Power consumption	At maximum luminance and checkered flag pattern 6.2 W (typ.)				

2. BLOCK DIAGRAM



Note1: GND is connected to FG (Frame ground). GND and GNDB (Backlight inverter ground) should be connected together in customer equipment.

Note2: The metallic frame of lamp holder is used to a transmission line for VBLC.

3. DETAILED SPECIFICATIONS

3.1 MECHANICAL SPECIFICATIONS

Parameter	Specification	Unit
Module size	243.0 ± 0.5 (W) × 185.1 ± 0.5 (H) × 11.0 ± 0.5 (D) Note1	mm
Display area	211.2 ± 0.5 (W) × 158.4 ± 0.5 (H) Note1	mm
Weight	530 (typ.), 550 (max.)	g

Note1: See "6.OUTLINE DRAWINGS".

3.2 ABSOLUTE MAXIMUM RATINGS

Parameter		Symbol	Rating	Unit	Remarks	
Power supply voltage	LCD panel signal board		VCC	-0.3 to +6.5	V	Ta = 25°C
	Lamp	High voltage side (Hot) Note1	VBLH	1,500	Vrms	
		Low voltage side (Cold) Note2	VBLC	42.4	Vrms	
Input voltage for signals	Display signals Note3		VD	-0.3 to VCC+0.3	V	
	Function signals Note4		VF	-0.3 to VCC+0.3	V	
Storage temperature		Tst	-20 to +80	°C		
Operating temperature	Front surface	TopF	0 to +65	°C	-	
	Rear surface	TopR	0 to +70	°C		
Relative humidity Note5		RH	≤ 95	%	Ta ≤ 40°C	
			≤ 85	%	40 < Ta ≤ 50°C	
			≤ 70	%	50 < Ta ≤ 55°C	
			≤ 60	%	55 < Ta ≤ 60°C	
			≤ 50	%	60 < Ta ≤ 65°C	
Absolute humidity Note5		-	≤ 78 Note6	g/m ³	Ta > 65°C	

Note1: "VBLH" is the voltage value between low voltage terminal (Cold) and high voltage terminal (Hot).

Note2: "VBLC" is the voltage value between frame ground (FG) and low voltage terminal (Cold).

Note3: Display signals are CLK, Hsync, Vsync, DE and DATA (R0 to R5, G0 to G5, B0 to B5).

Note4: Function signal is DPSR.

Note5: No condensation

Note6: Ta = 65°C, RH = 50%

3.3 ELECTRICAL CHARACTERISTICS

3.3.1 Driving for LCD panel signal processing board

(Ta = 25°C)

Parameter	Symbol	Min.	Typ.	Max.	Unit	Remarks
Power supply voltage	VCC	3.0	3.3	3.6	V	for 3V system
		4.7	5.0	5.3	V	for 5V system
Power supply current	ICC	-	280 Note1	400	mA	VCC = 3.3V
		-	200 Note1	280	mA	VCC = 5.0V
Logic input voltage for display signals	Low	VDLL	0	-	0.3Vcc	CMOS level
	High	VDLH	0.7Vcc	-	Vcc	
Input voltage for DPSR signal	Low	VFDL	0	-	0.3Vcc	
	High	VFDH	0.7Vcc	-	Vcc	

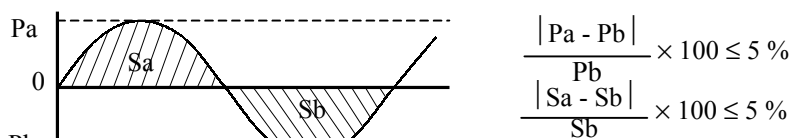
Note1: Checkered flag pattern [by EIAJ ED-2522]

3.3.2 Working for backlight lamp

Parameter	Symbol	Ta	Min.	Typ.	Max.	Unit	Remarks
Starting voltage	VS	0°C	1,100	-	-	Vrms	Note1
		25°C	850	-	-	Vrms	
Power supply voltage	VBLH	25°C	-	520	-	Vrms	Note1, Note2
Power supply current	IBL	25°C	2.0	5.0	5.5	mArms	Note2, Note3
Oscillation frequency	FO	25°C	50	54	58	kHz	Note4

Note1: The power supply voltage cycle between lamps should be kept on a same phase. "VS" and "VBLH" are the voltage value between low voltage side (Cold) and high voltage side (Hot).

Note2: The asymmetric ratio of working waveform for lamps (Power supply voltage peak ratio, power supply current peak ratio and waveform space ratio) should be less than 5 % (See the following figure.). If the waveform is asymmetric, DC (Direct current) element apply into the lamp. In this case, a lamp lifetime may be shortened, because a distribution of a lamp enclosure substance inclines toward one side between low voltage terminal (Cold terminal) and high voltage terminal (Hot terminal).

Pa: Supply voltage/current peak for positive, Pb: Supply voltage/current peak for negative
Sa: Waveform space for positive part, Sb: Waveform space for negative part

Note3: The lamp holder of this product contains two backlight lamps. The low voltage terminal of both lamps is connected to one contact point. Also above power supply current specification is one lamp duty. Therefore, this lamp holder becomes twice as many power supply current as above value. The measurement for the power supply current value of one lamp should measure to use between low voltage terminal (Cold terminal) and high voltage terminal (Hot terminal) to each lamp.

Note4: In case "FO" is not the recommended value, beat noise may display on the screen, because of interference between "FO" and "1/th". Recommended value of "FO" is as following.

$$FO = \frac{1}{4} \times \frac{1}{th} \times (2n-1)$$

th: Horizontal synchronous cycle (See "4.9.4 Timing characteristics".)
n: Natural number (1, 2, 3)

3.3.3 Power supply voltage ripple

This product works, even if the ripple voltage levels are beyond the permissible values as following the table, but there might be noise on the display image.

Parameter	Power supply voltage	Ripple voltage Note1 (Measure at input terminal of power supply)	Unit
VCC	3.3 V	≤ 100	mVp-p
	5.0 V	≤ 100	mVp-p

Note1: The permissible ripple voltage includes spike noise.

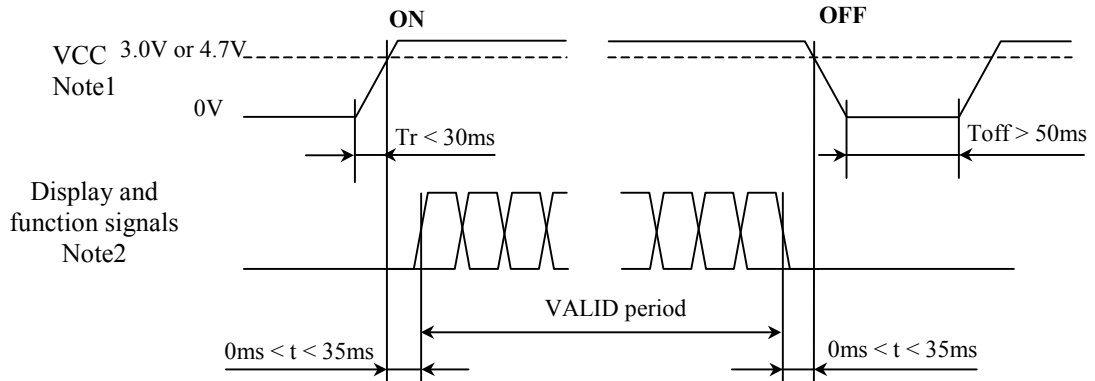
3.3.4 Fuses

Fusing line	Fuse		Rating	Unit	Remark
	Type	Supplier			
VCC	TF16N2.00TE	KOA Corporation	4.0	A	Fusing current Note1
			47	V	-

Note1: The power capacity should be more than the fusing current rating. If the power capacity is less than the criteria value, the fuse may not blow, and then nasty smell, smoking and so on may occur.

3.4 POWER SUPPLY VOLTAGE SEQUENCE

3.4.1 Sequence for LCD panel signal processing board

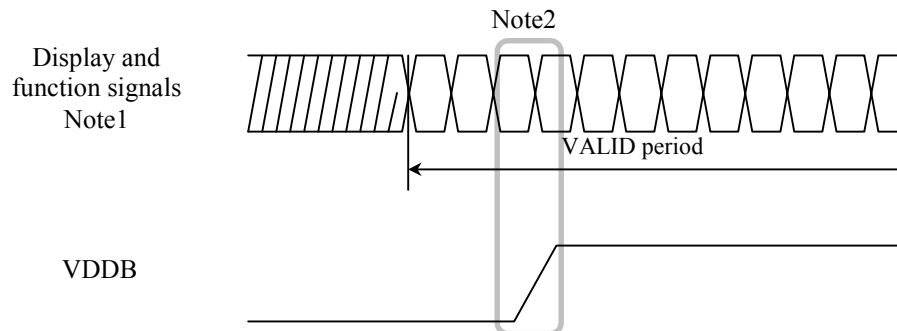


Note1: In terms of voltage variation (voltage drop) while VCC rising edge is below 3.0V in "VCC = 3.3V" or 4.7V in "VCC = 5.0V", a protection circuit may work, and then this product may not work.

Note2: Display (CLK, Hsync, Vsync, DE, R0 to R5, G0 to G5, B0 to B5) and function (DPSR) signals must be Low or High-impedance, exclude the VALID period (See above sequence diagram), in order to avoid that internal circuits is damaged.

If some of display and function signals of this product are cut while this product is working, even if the signal input to it once again, it might not work normally. If customer stops the display and function signals, they should be cut VCC.

3.4.2 Sequence for backlight inverter (Option)



Note1: These are display and function signals for LCD panel signal processing board.

Note2: The backlight inverter voltage (VDDDB) should be inputted within the valid period of display and function signals, in order to avoid unstable data display.

3.5 CONNECTIONS AND FUNCTIONS FOR INTERFACE PINS

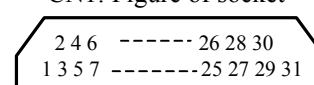
3.5.1 LCD panel signal processing board

CN1 socket (LCD module side): DF9-31P-1V (Hirose Electric Co., Ltd.)
 Adaptable plug: DF9-31S-1V (Hirose Electric Co., Ltd.)
 IL-310-T31S-VF (Japan Aviation Electronics Industry Limited)

Pin No.	Symbol	Signal	Remarks
1	GND	Ground	-
2	CLK	Dot clock	
3	Hsync	Horizontal synchronous	
4	Vsync	Vertical synchronous	
5	GND	Ground	
6	R0	Red data (LSB)	Least significant bit
7	R1	Red data	-
8	R2	Red data	
9	R3	Red data	
10	R4	Red data	
11	R5	Red data (MSB)	Most significant bit
12	GND	Ground	-
13	G0	Green data (LSB)	Least significant bit
14	G1	Green data	-
15	G2	Green data	
16	G3	Green data	
17	G4	Green data	
18	G5	Green data (MSB)	Most significant bit
19	GND	Ground	-
20	B0	Blue data (LSB)	Least significant bit
21	B1	Blue data	-
22	B2	Blue data	
23	B3	Blue data	
24	B4	Blue data	
25	B5	Blue data (MSB)	Most significant bit
26	GND	Ground	-
27	DE	Select of DE / Fixed mode	DE mode: Data enable signal, Fixed mode: Open
28	VCC	Power supply	-
29	VCC	Power supply	
30	NC	Non connection	
31	DPSR	Select of scan direction	Normal scan: Low or Open, Reverse scan: High Note1

Note1: See "3.8 SCANNING DIRECTIONS".

CN1: Figure of socket



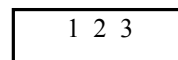
3.5.2 Backlight lamp

CN2 socket: BHR-03VS-1 (J.S.T Mfg. Co., Ltd.)

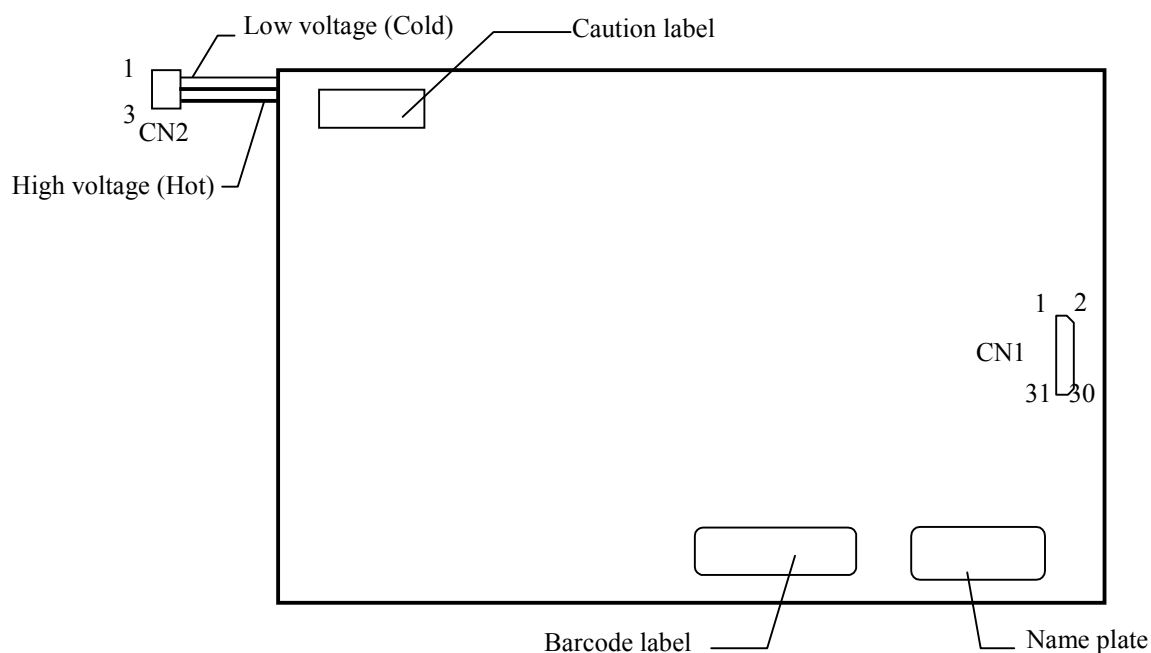
Adaptable plug: SM03 (4.0) B-BHS-TB (J.S.T Mfg. Co., Ltd.)

Pin No.	Symbol	Signal	Remarks
1	VBLC	Low voltage (Cold)	-
2	VBLH	High voltage (Hot)	
3	VBLH	High voltage (Hot)	

CN2: Figure of socket



3.5.3 Positions of sockets



3.6 DISPLAY COLORS AND INPUT DATA SIGNALS

This product can display in equivalent to 262,144 colors in 64 scale. Also the relation between display colors and input data signals is as the following table.

Display colors		Data signal (0: Low level, 1: High level)																	
		R5	R4	R3	R2	R1	R0	G5	G4	G3	G2	G1	G0	B5	B4	B3	B2	B1	B0
Basic colors	Black	0	0	0	0	0	0	0	0	0	0	0	0	0	0	0	0	0	0
	Blue	0	0	0	0	0	0	0	0	0	0	0	0	1	1	1	1	1	1
	Red	1	1	1	1	1	1	0	0	0	0	0	0	0	0	0	0	0	0
	Magenta	1	1	1	1	1	1	0	0	0	0	0	0	1	1	1	1	1	1
	Green	0	0	0	0	0	0	1	1	1	1	1	1	0	0	0	0	0	0
	Cyan	0	0	0	0	0	0	1	1	1	1	1	1	1	1	1	1	1	1
	Yellow	1	1	1	1	1	1	1	1	1	1	1	1	0	0	0	0	0	0
	White	1	1	1	1	1	1	1	1	1	1	1	1	1	1	1	1	1	1
Red scale	Black	0	0	0	0	0	0	0	0	0	0	0	0	0	0	0	0	0	0
	dark	0	0	0	0	0	1	0	0	0	0	0	0	0	0	0	0	0	0
	↑			:					:						:				
	↓			:					:						:				
	bright	1	1	1	1	0	1	0	0	0	0	0	0	0	0	0	0	0	0
	Red	1	1	1	1	1	1	0	0	0	0	0	0	0	0	0	0	0	0
Green scale	Black	0	0	0	0	0	0	0	0	0	0	0	0	0	0	0	0	0	0
	dark	0	0	0	0	0	0	0	0	0	0	0	1	0	0	0	0	0	0
	↑			:					:						:				
	↓			:					:						:				
	bright	0	0	0	0	0	0	1	1	1	1	0	1	0	0	0	0	0	0
	Green	0	0	0	0	0	0	1	1	1	1	1	1	0	0	0	0	0	0
Blue scale	Black	0	0	0	0	0	0	0	0	0	0	0	0	0	0	0	0	0	0
	dark	0	0	0	0	0	0	0	0	0	0	0	0	0	0	0	0	0	1
	↑			:					:						:				
	↓			:					:						:				
	bright	0	0	0	0	0	0	0	0	0	0	0	0	1	1	1	1	0	1
	Blue	0	0	0	0	0	0	0	0	0	0	0	0	1	1	1	1	1	1

3.7 DISPLAY POSITIONS

The following table is the coordinates per pixel (See figure of "3.8 SCANNING DIRECTIONS".).

C(0, 0)	C(1, 0)	...	C(X, 0)	...	C(638, 0)	C(639, 0)
C(0, 1)	C(1, 1)	...	C(X, 1)	...	C(638, 1)	C(639, 1)
•	•	•	•	•	•	•
•	•	•	•	•	•	•
•	•	•	•	•	•	•
C(0, Y)	C(1, Y)	...	C(X, Y)	...	C(638, Y)	C(639, Y)
•	•	•	•	•	•	•
•	•	•	•	•	•	•
•	•	•	•	•	•	•
C(0,478)	C(1,478)	...	C(X,478)	...	C(638,478)	C(639,478)
C(0,479)	C(1,479)	...	C(X,479)	...	C(638,479)	C(639,479)

3.8 SCANNING DIRECTIONS

The following figures are seen from a front view. Also the arrow shows the direction of scan.

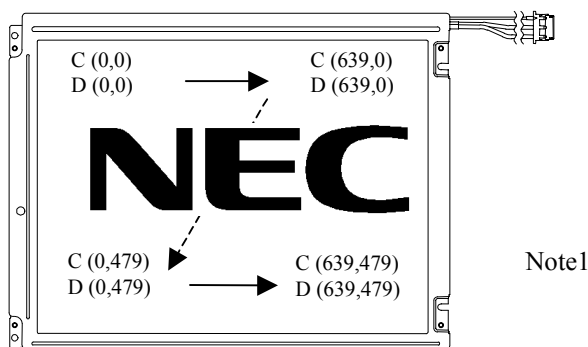


Figure 1. Normal scan (DPSR: Low or Open)

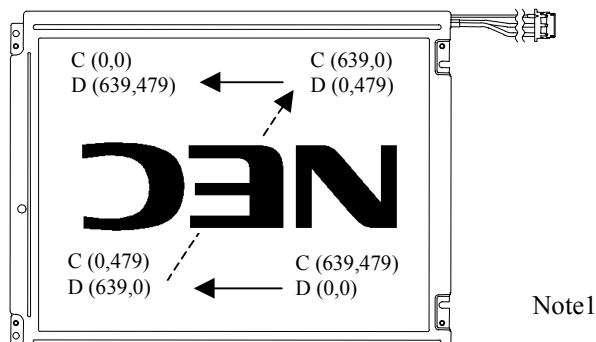


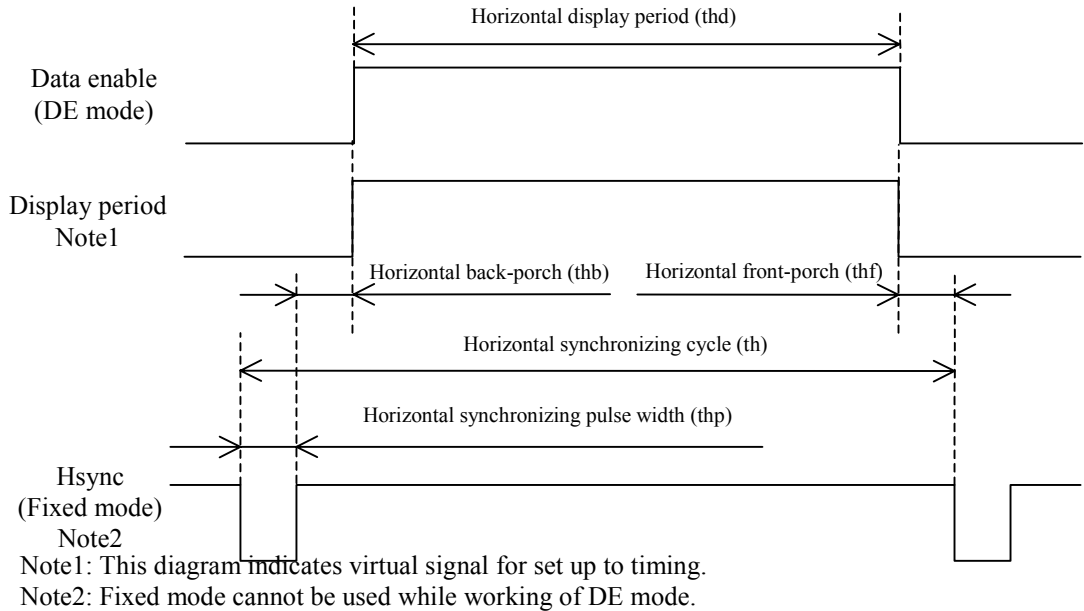
Figure 2. Reverse scan (DPSR: High)

Note1: Meaning of C (X, Y) and D (X, Y)
 C (X, Y): The coordinates of the display position (See "3.7 DISPLAY POSITIONS".)
 D (X, Y): The data number of input signal for LCD panel signal processing board

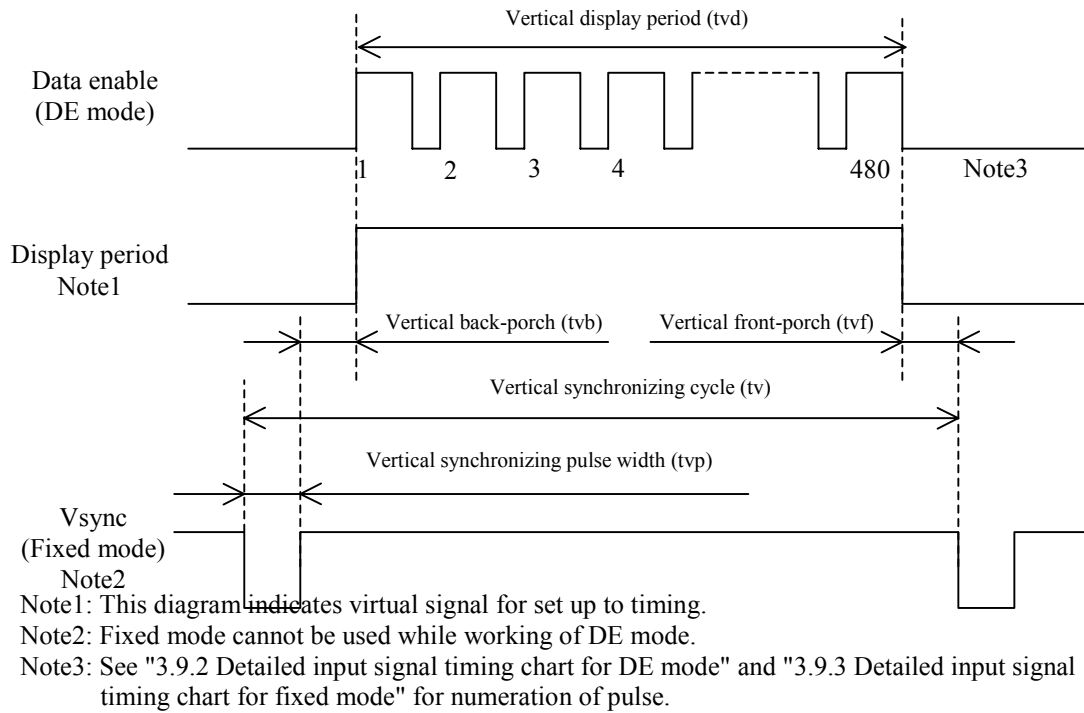
3.9 INPUT SIGNAL TIMINGS FOR LCD PANEL SIGNAL PROCESSING BOARD

3.9.1 Outline of input signal timings

• Horizontal signal

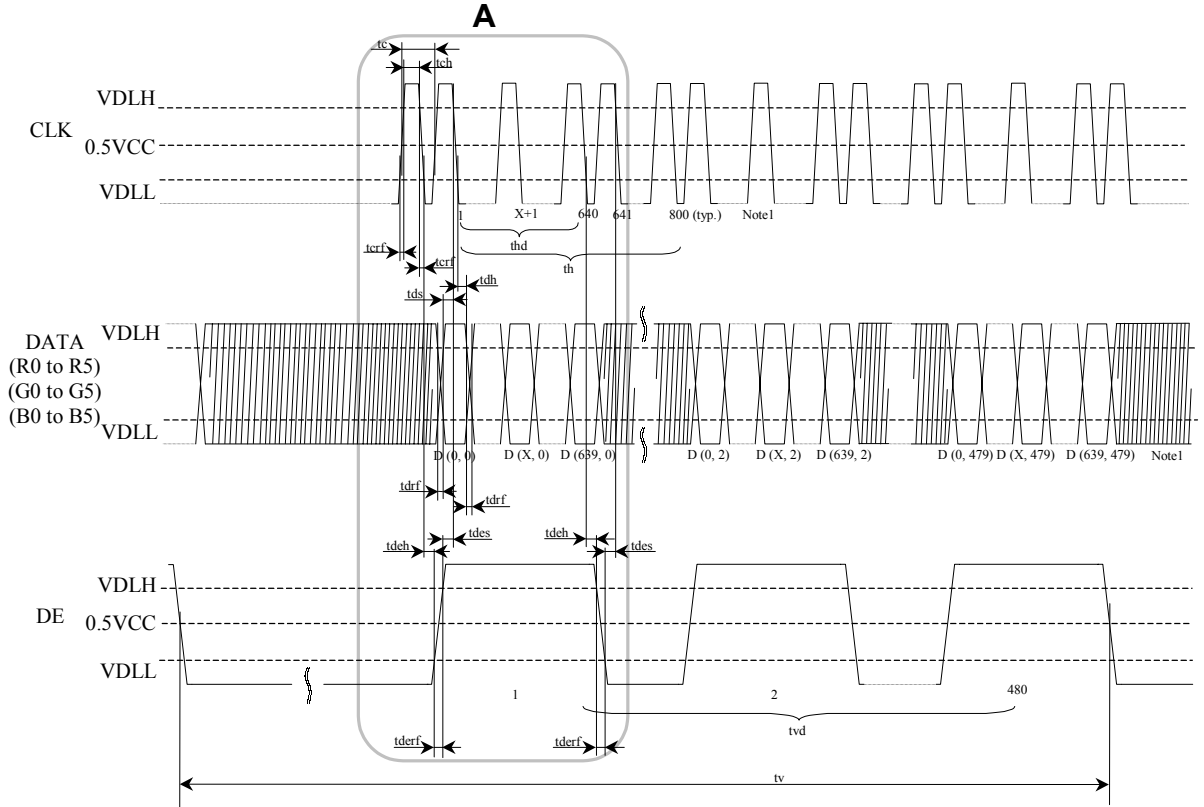


• Vertical signal



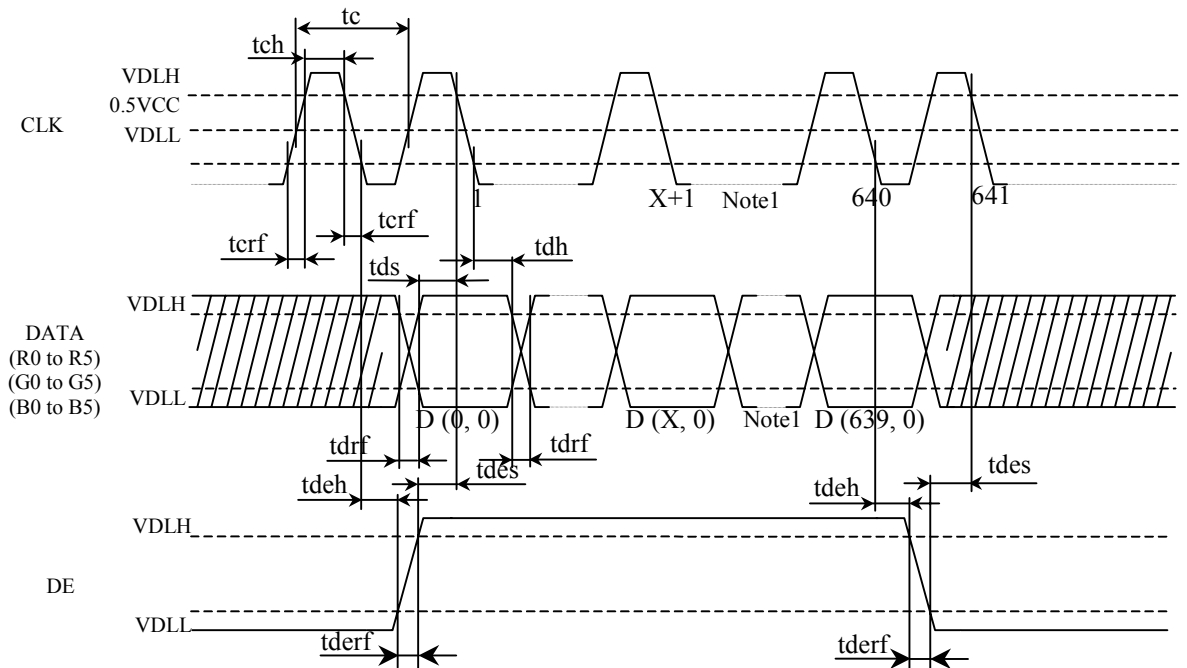
3.9.2 Detailed input signal timing chart for DE mode

• Outline chart



Note1: X is data number from 1 to 638. See "3.8 SCANNING DIRECTIONS".

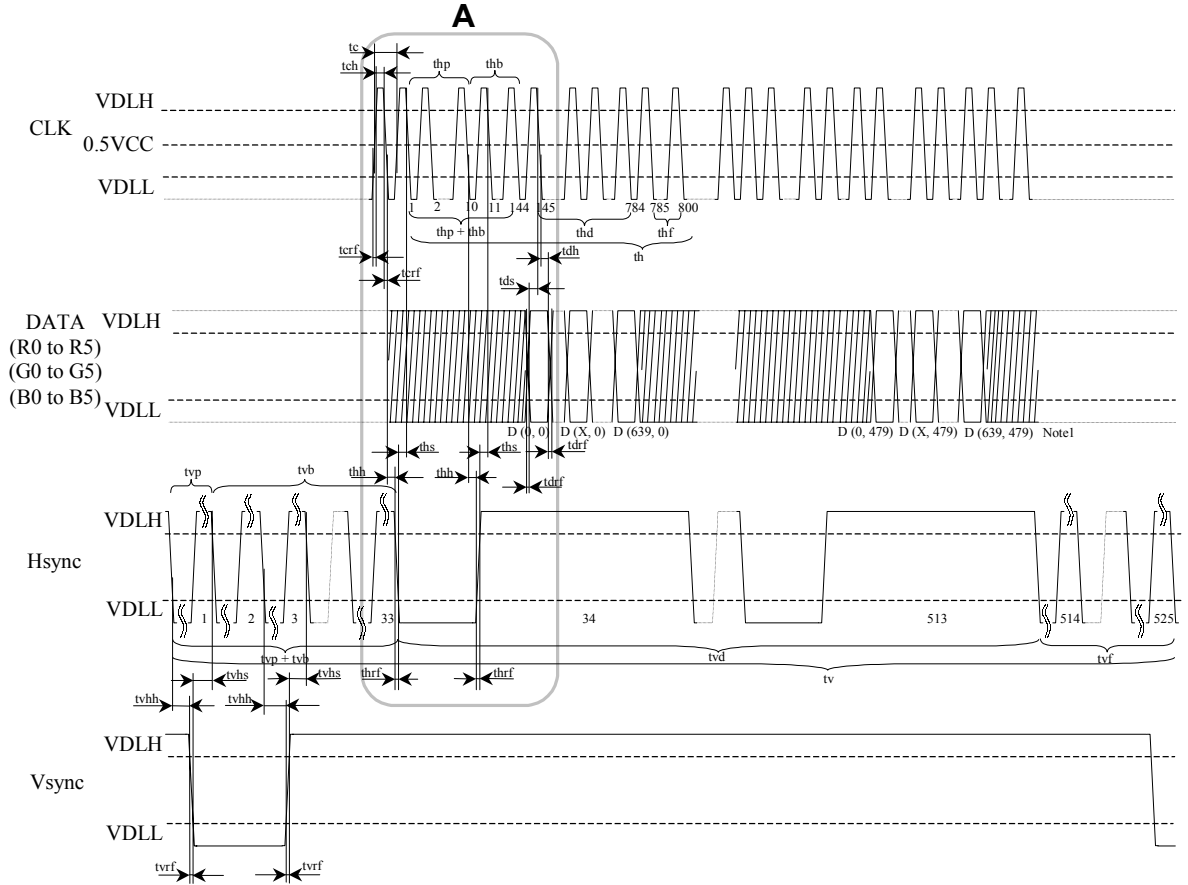
• Detail of A part



Note1: X is data number from 1 to 638. See "3.8 SCANNING DIRECTIONS".

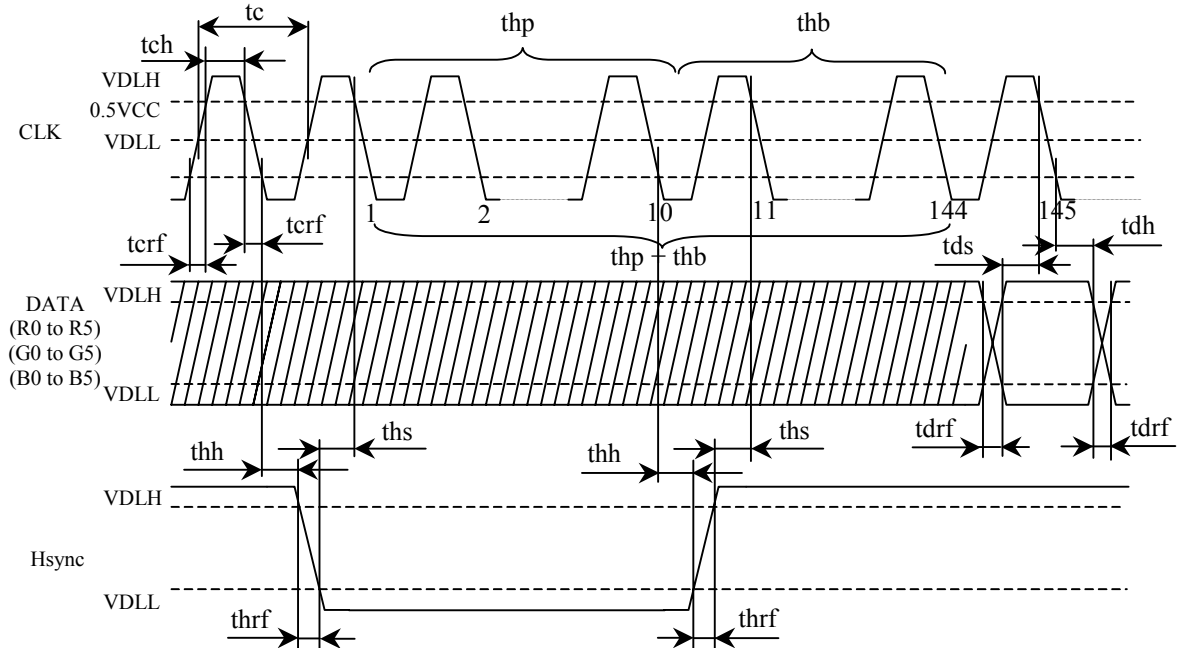
3.9.3 Detailed input signal timing chart for fixed mode

• Outline chart



Note1: X is data number from 1 to 638. See "3.8 SCANNING DIRECTIONS".

• Detail of A part



3.9.4 Timing characteristics

- Common to DE mode and fixed mode

Parameter		Symbol	Min.	Typ.	Max.	Unit	Remarks	
CLK	Frequency	tcf	21.0	25.2	29.0	MHz	39.7 ns (typ.) Note1	
	Duty	tcd	0.4	-	0.6	-	Note1	
	Rise time, Fall time	tcrf	-	-	10	ns		
DATA	CLK-DATA	Setup time	tds	8	-	-	ns	-
		Hold time	tdh	12	-	-	ns	
	Rise time, Fall time	tdrf	-	-	10	ns		

Note1: Definition of units is as follows.

$$tcf = 1/tc, tcd = tch/tc = tch \times tcd$$

- DE mode

Parameter		Symbol	Min.	Typ.	Max.	Unit	Remarks	
DE	Horizontal	Cycle	th	-	800	-	CLK	Note1
		Display period	thd	640			CLK	
	Vertical (One frame)	Cycle	tv	-	525	-	H	
		Display period	tvd	480			H	
	CLK-DE	Setup time	tdes	8	-	-	ns	-
		Hold time	tdeh	12	-	-	ns	
Rise time, Fall time		tderf	-	-	10	ns		

Note1: Definition of units is as follows.

$$tc = 1CLK, th = 1H$$

- Fixed mode

Parameter		Symbol	Min.	Typ.	Max.	Unit	Remarks	
Hsync	Cycle	th	30.0	31.8	33.6	μ s	31.4 kHz (typ.)	
			800			CLK	Note1	
	Display period	thd	640			CLK		
	Front-porch	thf	16			CLK		
	Pulse width	thp	10	96	-	CLK		
	Back-porch	thb	-	48	134	CLK		
	Total of pulse width and back-porch		thp + thb	144			CLK	Note1, Note2
	CLK- Hsync	Setup time	ths	8	-	-	ns	-
Hold time		thh	12	-	-	ns		
Rise time, Fall time		thrf	-	-	10	ns		
Vsync	Cycle	tv	16.1	16.7	17.2	ms	59.9 Hz (typ.)	
			525			H	Note1	
	Display period	tvd	480			H		
	Front-porch	tvf	12			H		
	Pulse width	tvp	1	-	2	H		
	Back-porch	tvb	31	-	32	H		
	Total of pulse width and back-porch		tvp + tvb	33			H	Note1, Note2
	Vsync- Hsync	Setup time	tvhs	30	-	-	ns	Note1
Hold time		tvhh	1	-	-	CLK		
Rise time, Fall time		tvrf	-	-	10	ns		

Note1: Definition of units is as follows.

$$tc = 1CLK, th = 1H$$

Note2: Keep tvp + tvb and thp + thb within the table. If it is out of specification, display position will be shifted to right/left side or up/down.

3.10 OPTICS

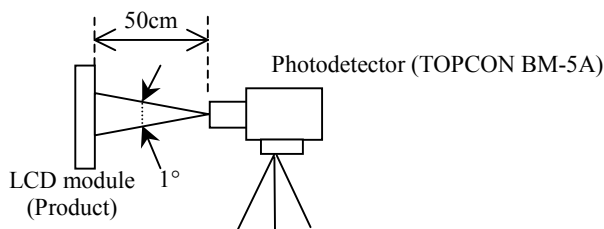
3.10.1 Optical characteristics

Parameter	Note1	Condition	Symbol	Min.	Typ.	Max.	Unit	Remarks	
Contrast ratio		White/Black at center $\theta_R = 0^\circ, \theta_L = 0^\circ, \theta_U = 0^\circ, \theta_D = 0^\circ$	CR	150	300	-	-	Note2	
Luminance		White at center $\theta_R = 0^\circ, \theta_L = 0^\circ, \theta_U = 0^\circ, \theta_D = 0^\circ$	L	280	350	-	cd/m ²	-	
Luminance uniformity		-	LU	-	1.25	1.40	-	Note3	
Chromaticity	White	x coordinate	Wx	-	0.305	-	-	Note4	
		y coordinate	Wy	-	0.330	-	-		
	Red	x coordinate	Rx	-	0.600	-	-		
		y coordinate	Ry	-	0.337	-	-		
	Green	x coordinate	Gx	-	0.321	-	-		
		y coordinate	Gy	-	0.537	-	-		
Blue	x coordinate	Bx	-	0.149	-	-			
	y coordinate	By	-	0.136	-	-			
Color gamut		$\theta_R = 0^\circ, \theta_L = 0^\circ, \theta_U = 0^\circ, \theta_D = 0^\circ$ at center, against NTSC color space	C	-	43	-	%		
Response time		White to Black	Ton	-	6	40	ms	Note5	
		Black to White	Toff	-	40	85	ms	Note6	
Viewing angle	CR = 10	Right	$\theta_U = 0^\circ, \theta_D = 0^\circ$	θ_R	-	70	-	°	Note7
		Left	$\theta_U = 0^\circ, \theta_D = 0^\circ$	θ_L	-	70	-	°	
		Up	$\theta_R = 0^\circ, \theta_L = 0^\circ$	θ_U	-	45	-	°	
		Down	$\theta_R = 0^\circ, \theta_L = 0^\circ$	θ_D	-	55	-	°	

Note1: Measurement conditions are as follows.

Ta = 25°C, VCC = 3.3V, IBL = 5.0mA

Optical characteristics are measured at luminance saturation after 20minutes from working the product, in the dark room. Also measurement method for luminance is as follows.



Note2: See "3.10.2 Definition of contrast ratio".

Note3: See "3.10.3 Definition of luminance uniformity".

Note4: These coordinates are found on CIE 1931 chromaticity diagram.

Note5: Product surface temperature: TopF = 25°C

Note6: See "3.10.4 Definition of response times".

Note7: See "3.10.5 Definition of viewing angles".

3.10.2 Definition of contrast ratio

The contrast ratio is calculated by using the following formula.

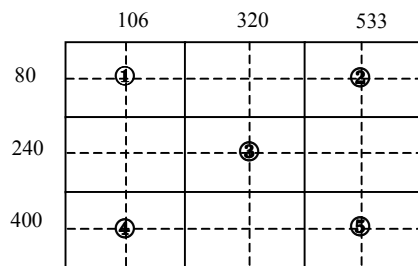
$$\text{Contrast ratio (CR)} = \frac{\text{Luminance of white screen}}{\text{Luminance of black screen}}$$

3.10.3 Definition of luminance uniformity

The luminance uniformity is calculated by using following formula.

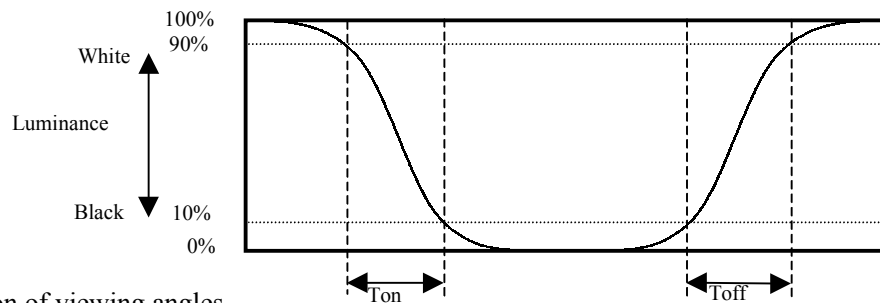
$$\text{Luminance uniformity (LU)} = \frac{\text{Maximum luminance from ① to ⑤}}{\text{Minimum luminance from ① to ⑤}}$$

The luminance is measured at near the 5 points shown below.

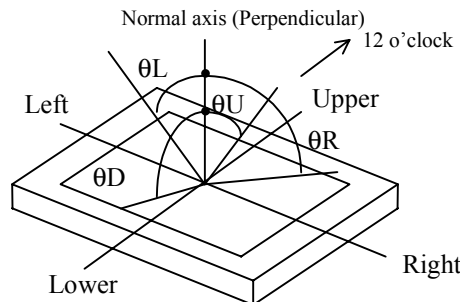


3.10.4 Definition of response times

Response time is measured, the luminance changes from "white" to "black", or "black" to "white" on the same screen point, by photo-detector. Ton is the time it takes the luminance change from 90% down to 10%. Also Toff is the time it takes the luminance change from 10% up to 90% (See the following diagram.).



3.10.5 Definition of viewing angles

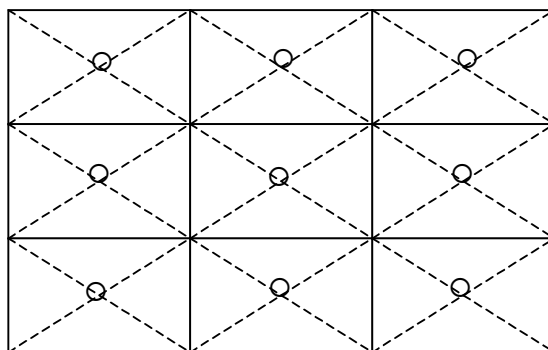


4. RELIABILITY TESTS

Test item	Condition	Judgement
High temperature and humidity (Operation)	① $55 \pm 2^{\circ}\text{C}$, RH = 85%, 240hours ② Display data is black.	No display malfunctions Note1
High temperature (Operation)	① $65 \pm 2^{\circ}\text{C}$, 240hours ② Display data is black.	
Heat cycle (Operation)	① $0 \pm 3^{\circ}\text{C}$...1hour $55 \pm 3^{\circ}\text{C}$...1hour ② 50cycles, 4hours/cycle ③ Display data is black.	
Thermal shock (Non operation)	① $-20 \pm 3^{\circ}\text{C}$...30minutes $80 \pm 3^{\circ}\text{C}$...30minutes ② 100cycles, 1hour/cycle ③ Temperature transition time is within 5 minutes.	
ESD (Operation)	① 150pF, 150 Ω , $\pm 10\text{kV}$ ② 9 places on a panel surface Note2 ③ 10 times each places at 1 sec interval	
Dust (Operation)	① 15 kinds of dust (by JIS-Z8901) ② 15 seconds stir ③ 8 times repeat at 1 hour interval	
Vibration (Non operation)	① 5 to 100Hz, 19.6m/s ² ② 1 minute/cycle ③ X, Y, Z direction ④ 120 times each directions	No display malfunctions Note1 No physical damages
Mechanical shock (Non operation)	① 539m/ s ² , 11ms ② $\pm X$, $\pm Y$, $\pm Z$ direction ③ 3 times each directions	

Note1: Display functions are checked under the same conditions as product inspection.

Note2: See the following figure for discharge points.



5. PRECAUTIONS

5.1 MEANING OF CAUTION SIGNS

The following caution signs have very important meaning. **Be sure to read "5.2 CAUTIONS", after understanding this contents!**



This sign has the meaning that customer will be injured by himself, if customer has wrong operations.

5.2 CAUTIONS



- * Pay attention to burn injury for the working backlight! It may be over 35°C from ambient temperature.
- * Do not shock and press the LCD panel and the backlight! Danger of breaking, because they are made of glass. (Shock: To be not greater 539m/s² and to be not greater 11ms, Pressure: To be not greater 19.6N)

5.3 ATTENTIONS

5.3.1 Handling of the product

- ① Take hold of both ends without touch the circuit board when customer pulls out products (LCD modules) from inner packing box. If customer touches it, products may be broken down or out of adjustment, because of stress to mounting parts.
- ② Do not hook cables nor pull connection cables such as flexible cable and so on, for fear of damage.
- ③ If customer puts down the product temporarily, the product puts on flat subsoil as a display side turns down.
- ④ Take the measures of electrostatic discharge such as earth band, ionic shower and so on, when customer deals with the product, because products may be damaged by electrostatic.
- ⑤ The torque for mounting screws must never exceed 0.29N·m. Higher torque values might result in distortion of the bezel.
- ⑥ Do not press or rub on the sensitive display surface. If customer clean on the panel surface, NEC Corporation recommends using the cloth with ethanolic liquid such as screen cleaner for LCD.
- ⑦ Do not push-pull the interface connectors while the product is working, because wrong power sequence may break down the product.

5.3.2 Environment

- ① Do not operation in dewdrop atmosphere and corrosive gases.
- ② Do not operate or store in high temperature or high humidity atmosphere. Keep the product in antistatic pouch in room temperature, because of avoidance for dusts and sunlight, if customer stores the product.
- ③ Do not operate in high magnetic field. Circuit boards may be broken down by it.
- ④ Use an original protection sheet on the product surface (polarizer). Adhesive type protection sheet should be avoided, because it may change color or properties of the polarizer.

5.3.3 Characteristics

The following items are neither defects nor failures.

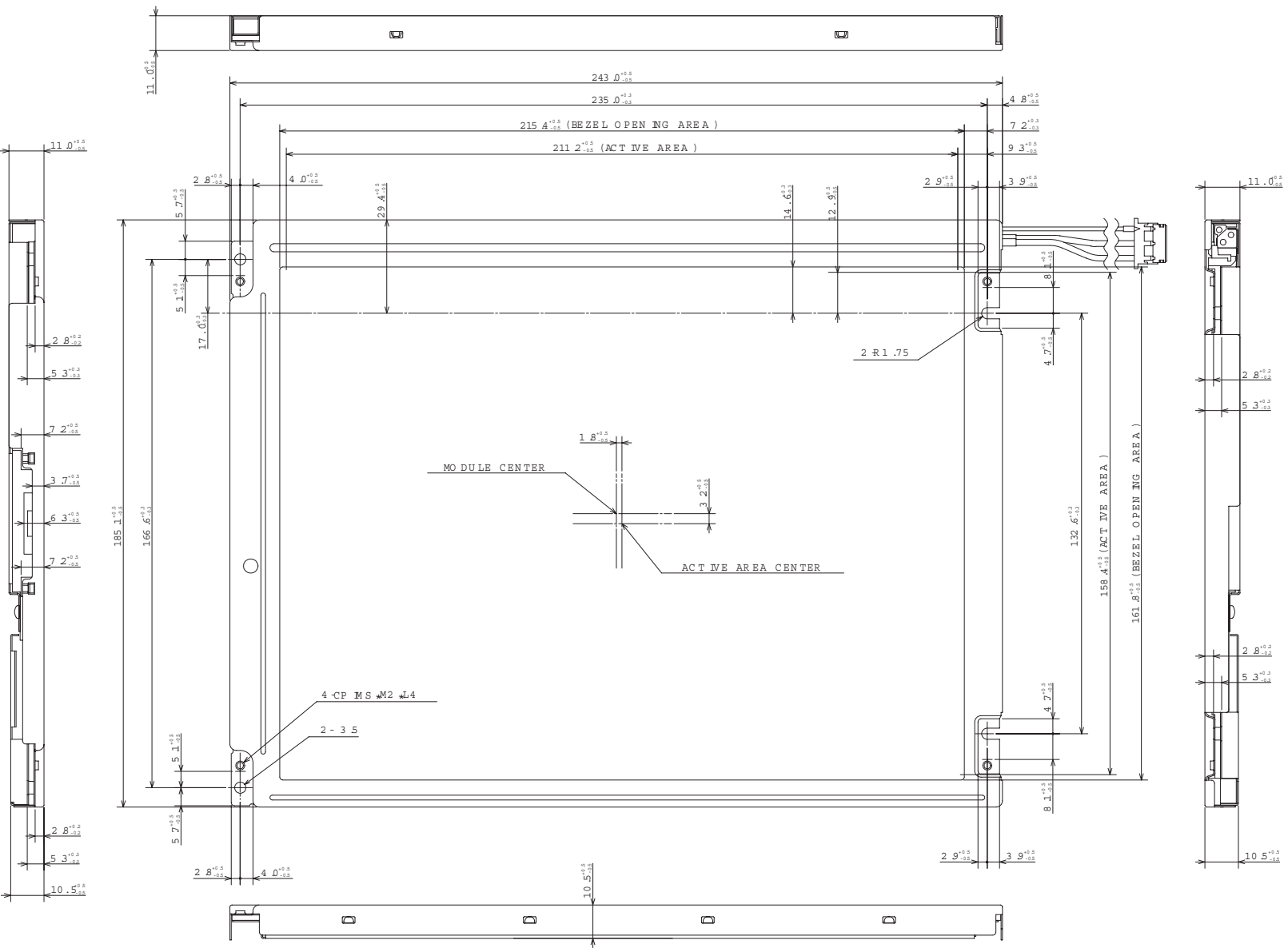
- ① Response time, luminance and color may be changed by ambient temperature.
- ② The LCD may be seemed luminance non-uniformity, flicker, vertical seam or small spot by display patterns.
- ③ Optical characteristics (e.g. luminance, display uniformity, etc.) gradually is going to change depending on operating time, and especially low temperature, because the LCD has cold cathode fluorescent lamps.
- ④ Do not display the fixed pattern for a long time because it may cause image sticking. Use a screen saver, if the fixed pattern is displayed on the screen.
- ⑤ The display color may be changed by viewing angle because of the use of condenser sheet in the backlight unit.
- ⑥ Optical characteristics may be changed by input signal timings.
- ⑦ The interference noise of input signal frequency for this product's signal processing board and luminance control frequency of customer's backlight inverter may appear on a display. Set up luminance control frequency of backlight inverter so that the interference noise does not appear.

5.3.4 Other

- ① All GND, backlight inverter ground (GNDB), VCC and backlight inverter power supply voltage (VDDDB) terminals should be used without a non-connected line.
- ② Do not disassemble a product or adjust volume without permission of NEC Corporation.
- ③ See "REPLACEMENT MANUAL FOR LAMPHOLDER", if customer would like to replace backlight lamps.
- ④ Pay attention not to insert waste materials inside of products, if customer uses screwdrivers.
- ⑤ Pack the product with original shipping package, because of avoidance of some damages during transportation, when customer returns it to NEC Corporation for repair and so on.

6. OUTLINE DRAWINGS

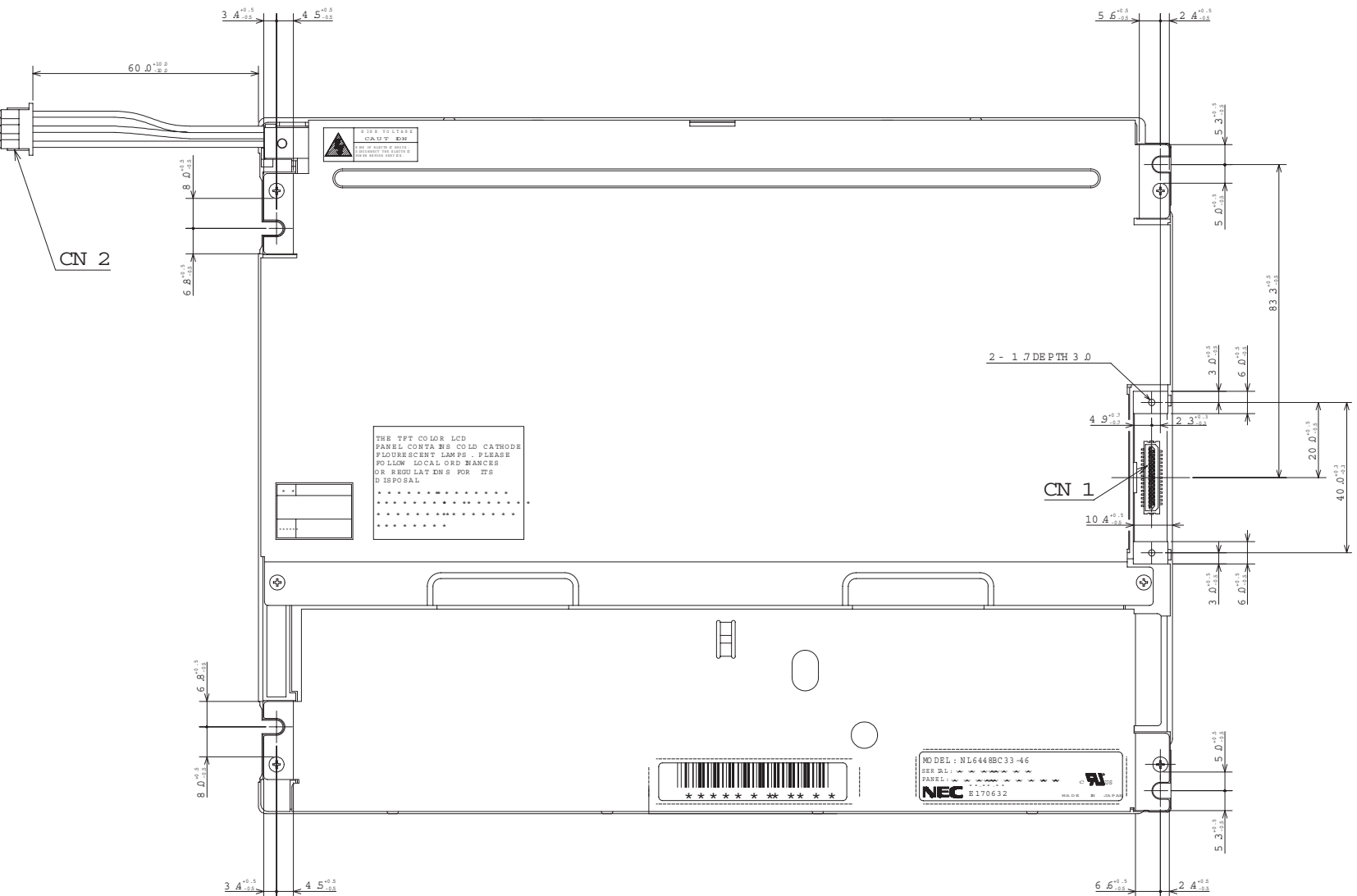
6.1 FRONT VIEW



NEC

NL6448BC33-46

6.2 REAR VIEW



No part of this document may be copied or reproduced in any form or by any means without the prior written consent of NEC Corporation. NEC Corporation assumes no responsibility for any errors which may appear in this document.

NEC Corporation does not assume any liability for infringement of patents, copyrights or other intellectual property rights of third parties by or arising from use of a device described herein or any other liability arising from use of such device. No license, either express, implied or otherwise, is granted under any patents, copyrights or other intellectual property rights of NEC Corporation or others.

While NEC Corporation has been making continuous effort to enhance the reliability of its electronic components, the possibility of defects cannot be eliminated entirely. To minimize risks of damage or injury to persons or property arising from a defect in an NEC electronic component, customers must incorporate sufficient safety measures in its design, such as redundancy, fire-containment, and anti-failure features. NEC devices are classified into the following three quality grades:

"Standard", "Special", and "Specific". The Specific quality grade applies only to devices developed based on a customer designated "quality assurance program" for a specific application. The recommended applications of a device depend on its quality grade, as indicated below. Customers must check the quality grade of each device before using it in a particular application.

Standard: Computers, office equipment, communications equipment, test and measurement equipment, audio and visual equipment, home electronic appliances, machine tools, personal electronic equipment and industrial robots

Special: Transportation equipment (automobiles, trains, ships, etc.), traffic control systems, anti-disaster systems, anti-crime systems, safety equipment and medical equipment (not specifically designed for life support)

Specific: Aircrafts, aerospace equipment, submersible repeaters, nuclear reactor control systems, life support systems or medical equipment for life support, etc.

The quality grade of NEC devices is "Standard" unless otherwise specified in NEC's Data Sheets or Data Books. If customers intend to use NEC devices for applications other than those specified for Standard quality grade, they should contact an NEC sales representative in advance.

Anti-radioactive design is not implemented in this product.

(Note)

- (1) "NEC" as used in this statement means NEC Corporation and also includes its majority-owned subsidiaries.
- (2) "NEC electronic component products" means any electronic component product developed or manufactured by or for NEC (as defined above).

DE0203