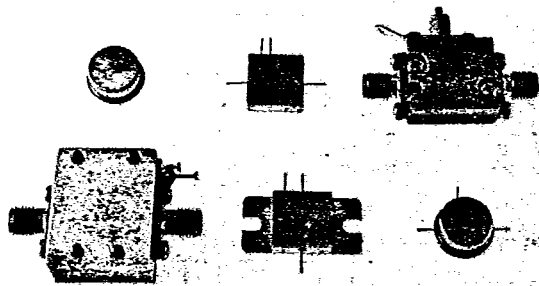


# AH-26

T-74-09-01



## 10 to 1500 MHz TO-8 Cascadable Amplifier

- High Output: +14.2dBm
- Two Stage Gain: +20.0dB
- Medium Noise: +5.0dB
- Various Package Options (see photo)  
Surface Mounted (SMTO-8), Flatpack with flange (FPF), Connectorized (CAH), Connectorized Flatpack (CFP), Flatpack (FP), and TO-8 (AH)

### Electrical Specifications

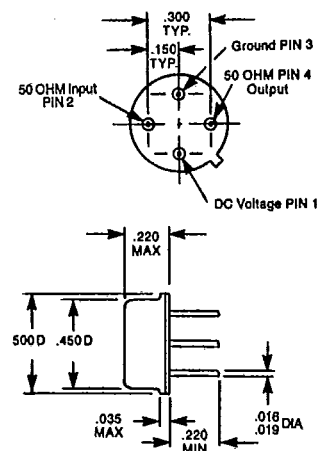
Measured in a 50-ohm system at +15 Vdc nominal

Characteristic	Typical	Guaranteed	Specifications	Maximum Ratings
	25°C	0°C to +50°C	-54°C to +85°C	
Frequency (MHz Min.)	10-1500	10-1500	10-1500	Ambient Operating Temperature ..... -54°C to +100°C
Small Signal Gain (dB Min.)	+20.0	+19.5	+18.5	Storage Temperature ... -62°C to +125°C
Gain Flatness (dB Max.)	±0.5	±0.7	±1.0	Maximum Case Temperature ..... +105°C
Noise Figure (dB Max.)	+5.0	+5.5	+6.0	Maximum DC Voltage ..... +18.0V
Power Output @ 1 dB Compression (dBm Min.)	+14.2	+13.0	+12.5	Maximum Continuous RF Input Power ..... +10.0dBm
Two Tone 3rd Order Intercept Point (dBm Min.)	+26.0	+24.0	+22.0	Maximum Short Term RF Input Power ..... +100.0 mW (1 minute Max.)
Two Tone 2nd Order Intercept Point (dBm Min.)	+36.0	+34.0	+32.0	Maximum Peak Power ..... +0.5W (3µseconds Max.)
One Tone 2nd Harmonic Intercept Point (dBm Min.)	+41.0	+39.0	+37.0	"X" Series Burn-In Temperature ..... +100°C
Input/Output VSWR (Max.)	<1.6:1	1.9:1	2.0:1	Weight ..... +2.5 grams Max.
DC Current at 15 V (mA Max.)	+65.0	+68.0	+75.0	

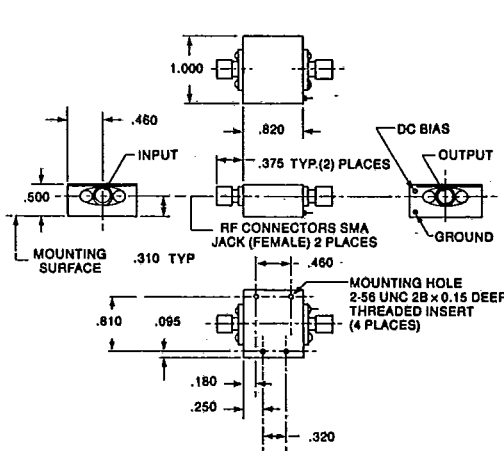
### Outline Drawings

(For additional package configurations, see Section 9)

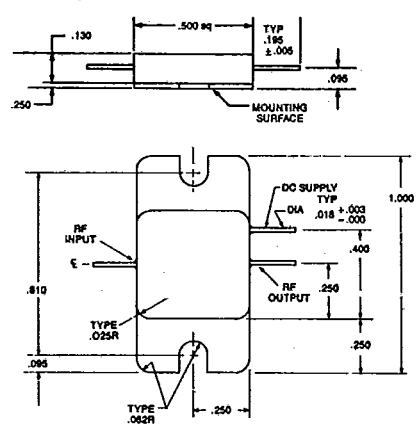
AH-26



CAH-26



FPF-26



# Typical Performance

