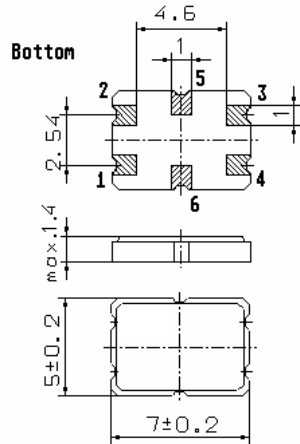


Specification for monolithic crystal filter:

MQF 90.0-3000/10

1. General

1.1. Case:

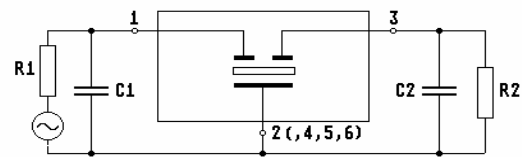


GS 2

Terminate plate materials: Ni / Au

Ni > 2.0 μm

Au > 0.75 μm



- | | |
|-----------------------------------|------------------|
| 1.2. Type name: | MQF 90.0-3000/10 |
| 1.3. Number of poles: | 2 |
| 1.4. Operating temperature range: | -20°C to +85°C |
| 1.5. Operable temperature range: | -40°C to +85°C |
| 1.6. Storage temperature range: | -55°C to +125°C |

2. Electric values

- | | |
|--|-------------------------------|
| 2.1. Nominal centre frequency fo: | 90.0 MHz |
| 2.2. Pass band | |
| 2.2.1. Bandwidth between 3 dB - frequencies: | > ± 15 kHz |
| 2.2.2. Ripple: | < 0.5 dB at fo ± 7.5 kHz |
| 2.2.3. Insertion loss: | < 1.0 dB |
| (measured on smallest attenuation in pass band) | |
| 2.3. Stop band | |
| 2.3.1. fo ± 50 kHz | > 16 dB |
| 2.3.2. Alternate attenuation: | > 30 dB |
| 2.3.3. Spurious response: fo ± 50 kHz...500kHz | > 10 dB |
| 2.4. Group delay: fo ± 15 kHz | < 6 μs |
| 2.5. Intermodulation | |
| 2.5.1. frequency 1 / 2 | 90.10 / 90.20 |
| 2.5.2. frequency 3 / 4 | 89.90 / 89.80 |
| 2.5.3. input power level | -10 dBm |
| 2.5.4. IP3 | > 30 dBm |
| 2.6. Terminating impedance (input and output): | 3000 Ω // - 0.7 pF |
| 2.7. Nominal input power level | -10 dBm |
| 2.7.1. Maximum input power level | + 5 dBm |
| 3. Marking on the case: | M90A1
tft yyww |
| 4. Environment conditions: | according to Telefilter CF001 |

Edited by: _____ date: _____ name: _____