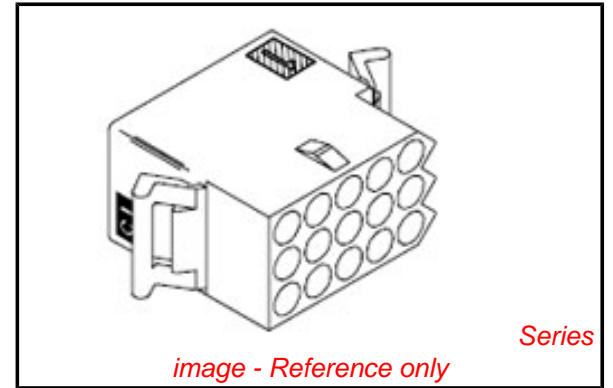


PLEASE CHECK WWW.MOLEX.COM FOR LATEST PART INFORMATION

Part Number: [0003091154](#)
Status: **Active**
Overview: [standard_093](#)
Description: 2.36mm (.093") Diameter Standard .093 Pin and Socket Receptacle Housing, 15 Circuits, 3 Rows

Documents:

| | |
|--|---|
| 3D Model | Product Specification PS-1375-001 (PDF) |
| Packaging Specification (PDF) | Product Specification PS-1375-002 (PDF) |
| Drawing (PDF) | RoHS Certificate of Compliance (PDF) |
| Product Specification PS-02-09 (PDF) | |



Agency Certification

| | |
|-----|---------|
| CSA | LR19980 |
| UL | E29179 |

General

| | |
|----------------|---|
| Product Family | Crimp Housings |
| Series | 1375 |
| Comments | 12.5A max. can be achieved when housing is used with 42477 or 42478 terminals |
| Overview | standard_093 |
| Product Name | Standard .093" |

Physical

| | |
|-------------------------------|-----------------|
| Circuits (maximum) | 15 |
| Color - Resin | Natural |
| Flammability | 94V-2 |
| Gender | Dual |
| Glow-Wire Compliant | No |
| Lock to Mating Part | Yes |
| Material - Resin | Nylon |
| Number of Rows | 3 |
| Packaging Type | Bag |
| Panel Mount | Yes |
| Pitch - Mating Interface (in) | 0.198 In |
| Pitch - Mating Interface (mm) | 5.03 mm |
| Stackable | No |
| Temperature Range - Operating | -40°C to +105°C |

Electrical

| | |
|-------------------------------|------|
| Current - Maximum per Contact | 9.5A |
|-------------------------------|------|

Material Info

| | |
|-----------------|---------|
| Old Part Number | 1375-R6 |
|-----------------|---------|

Reference - Drawing Numbers

| | |
|-------------------------|------------------------------------|
| Packaging Specification | PK-1375-001 |
| Product Specification | PS-02-09, PS-1375-001, PS-1375-002 |
| Sales Drawing | SD-1375-* |

EU RoHS

ELV and RoHS Compliant
REACH SVHC Contains SVHC: No
Halogen-Free Status
Not Reviewed

China RoHS



Need more information on product environmental compliance?

Email productcompliance@molex.com
 For a multiple part number RoHS Certificate of Compliance, [click here](#)

Please visit the [Contact Us](#) section for any non-product compliance questions.

Search Parts in this Series

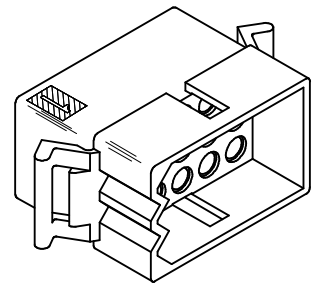
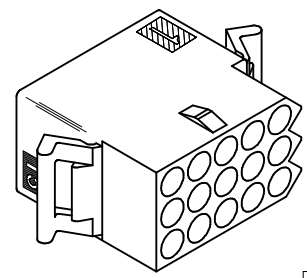
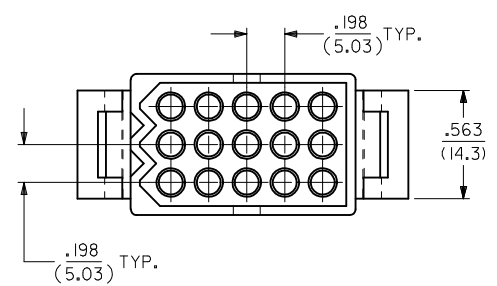
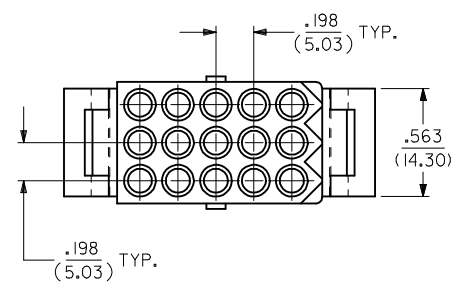
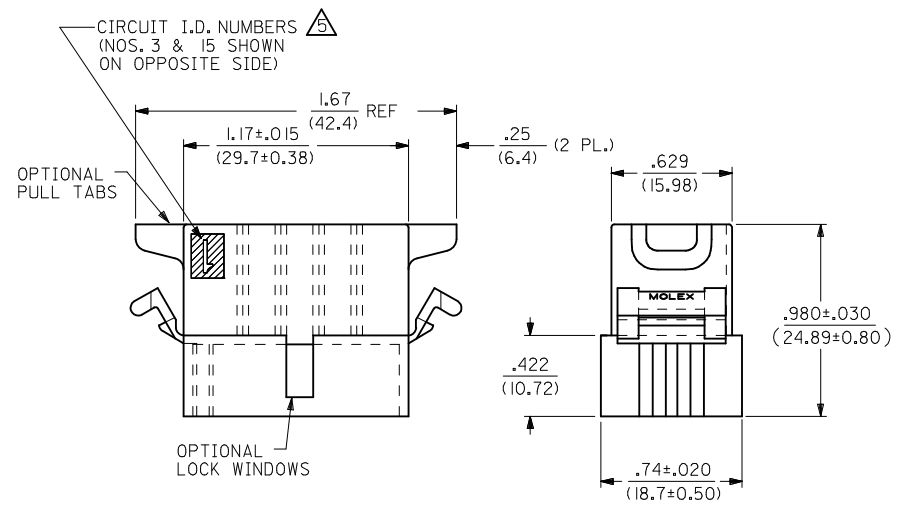
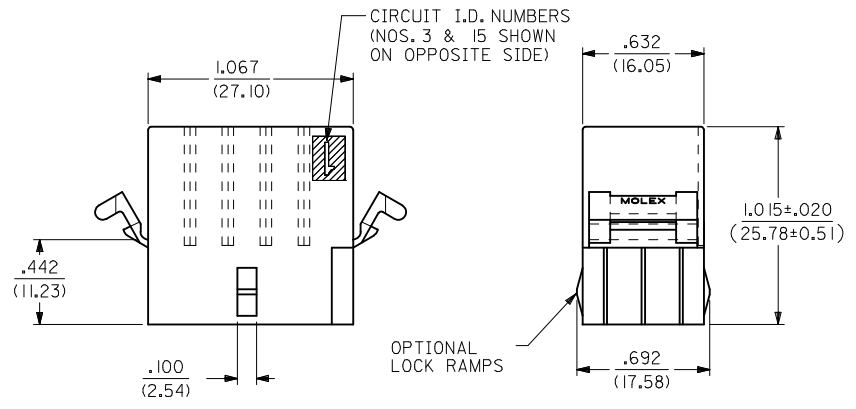
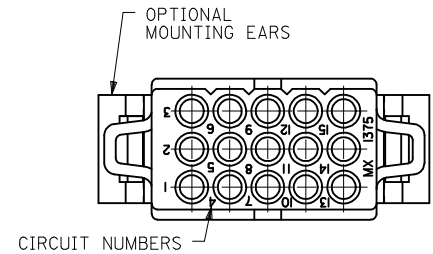
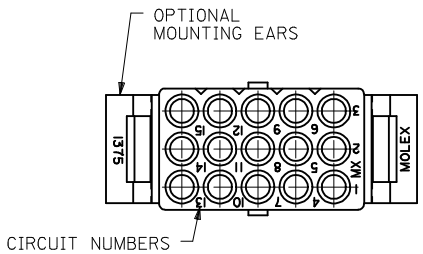
[1375Series](#)

Mates With

[3099](#) shrouded PCB connector, [1375p](#)

Use With

[1189](#) Crimp Terminals, [1190](#) Crimp Terminals, [1376](#) Male PC Tail Terminals, [1377](#) Female PC Tail Terminals, [1380](#) Male Crimp Terminals, [1381](#) Female Crimp Terminals, [1433](#) Crimp Terminals, [1434](#) Male Crimp Terminals, [1973](#) , [2151](#) , [2273](#) , [2870](#) , [2871](#) , [4272](#) , [4550](#) , [6271](#) , [6310](#) , [42477](#) , [42478](#)



RECEPTACLE

PLUG

| | | | | | | | |
|---|--|---|---|--|---------------------------|---------------------------|------------------------|
| UPDATE TITLE BLOCK EC NO: UCP2007-2415 DRAWN: DRWINAELHAG CHKD: CHKDL SCHMIDT APPR: FSM LTH | DESCRIPTION 2007/04/17 2007/05/03 2007/05/03 | QUALITY SYMBOLS ▽=0 ▽=0 | GENERAL TOLERANCES (UNLESS SPECIFIED) mm INCH | DIMENSION STYLE IN/MM | SCALE 2:1 | DESIGN UNITS INCH | THIRD ANGLE PROJECTION |
| | | 4 PLACES ± --- ± --- 3 PLACES ± --- ± .010 2 PLACES ± 0.25 ± .014 1 PLACE ± 0.35 ± --- ANGULAR ± 1/2° | DRAWN BY DATE KBW 01/14/1989 CHECKED BY DATE RW 01/14/1989 APPROVED BY DATE RAS 01/14/1989 | TITLE .093/(2.36) HOUSINGS PLUG & RECEPTACLE 15 CIRCUIT .198/(5.03)CL | MATERIAL NO. SEE CHART | DOCUMENT NO. SD-1375-* | SHEET NO. 1 OF 2 |
| DRAFT WHERE APPLICABLE MUST REMAIN WITHIN DIMENSIONS | THIS DRAWING CONTAINS INFORMATION THAT IS PROPRIETARY TO MOLEX INCORPORATED AND SHOULD NOT BE USED WITHOUT WRITTEN PERMISSION | | | | | | |

