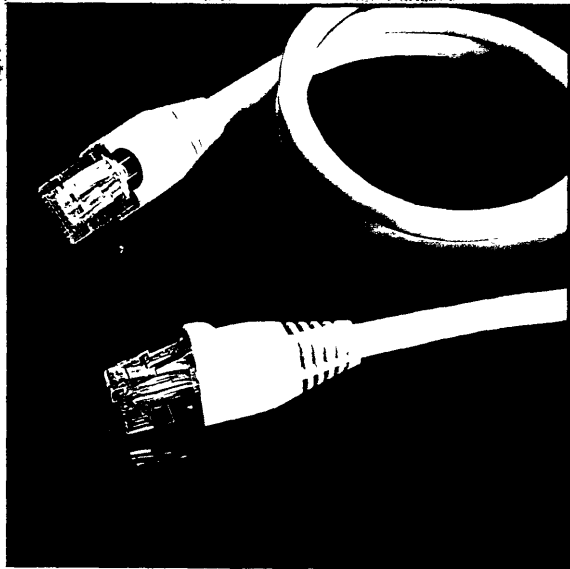


# CAT.5 UTP PATCH CABLES

300 6955  
To  
300 7091  
3252140



## Booted Cat.5 UTP Patch Cables

The cables are manufactured using Cat.5 approved cable and high quality RJ45 connectors. Each cable is supplied with fitted strain relief boots for added protection. They are wired to 258A specification and fully tested. For ease of recognition the cables are available in six different colours.

### Features:

- Manufactured using quality piece parts,  
**Connectors - 50 micron gold RJ45 plugs**  
**Cable - EIA/TIA TSB40-A, Cat.5 solid / stranded UL approved cable**
- Fully tested and certified to 100 MHz requirements
- "Protect-Connect" moulded boots to ensure hassle free installation
- Suitable for all current data, voice and ISDN patching
- All lengths held in stock for immediate despatch
- Six colours available for easy identification

### STOCK NO. DESCRIPTION

#### Beige UTP Patch Cables

2961-0.5	RJ45 UTP Patch Cable (0.5m)
2961-1	RJ45 UTP Patch Cable (1m)
2961-1.5	RJ45 UTP Patch Cable (1.5m)
2961-2	RJ45 UTP Patch Cable (2m)
2961-3	RJ45 UTP Patch Cable (3m)
2961-5	RJ45 UTP Patch Cable (5m)
2961-8	RJ45 UTP Patch Cable (8m)
2961-10	RJ45 UTP Patch Cable (10m)
2961-15	RJ45 UTP Patch Cable (15m)
2961-30	RJ45 UTP Patch Cable (30m)

## Booted Coloured Cat.5 Patch Cables

As with the standard beige patch cables all the coloured cables over a length of 5m are manufactured using solid core cable. The shorter lengths use the more flexible stranded version. For the full specification of the assemblies, please refer to the details as outlined above.

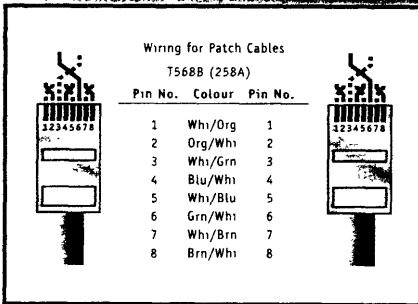
### STOCK NO. DESCRIPTION

#### Blue UTP Patch Cables

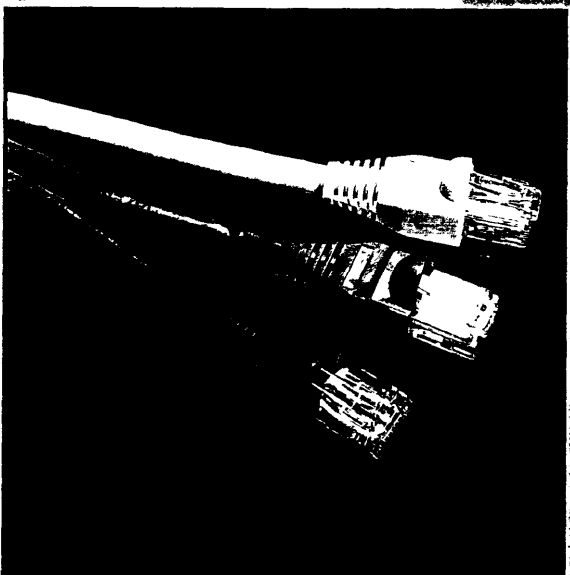
2961-0.5B	RJ45 UTP Blue Patch Cable (0.5m)
2961-1B	RJ45 UTP Blue Patch Cable (1m)
2961-1.5B	RJ45 UTP Blue Patch Cable (1.5m)
2961-2B	RJ45 UTP Blue Patch Cable (2m)
2961-3B	RJ45 UTP Blue Patch Cable (3m)
2961-5B	RJ45 UTP Blue Patch Cable (5m)
2961-8B	RJ45 UTP Blue Patch Cable (8m)
2961-10B	RJ45 UTP Blue Patch Cable (10m)
2961-15B	RJ45 UTP Blue Patch Cable (15m)
2961-30B	RJ45 UTP Blue Patch Cable (30m)

#### Red UTP Patch Cables

2961-0.5R	RJ45 UTP Red Patch Cable (0.5m)
2961-1R	RJ45 UTP Red Patch Cable (1m)
2961-1.5R	RJ45 UTP Red Patch Cable (1.5m)
2961-2R	RJ45 UTP Red Patch Cable (2m)
2961-3R	RJ45 UTP Red Patch Cable (3m)
2961-5R	RJ45 UTP Red Patch Cable (5m)
2961-8R	RJ45 UTP Red Patch Cable (8m)
2961-10R	RJ45 UTP Red Patch Cable (10m)
2961-15R	RJ45 UTP Red Patch Cable (15m)
2961-30R	RJ45 UTP Red Patch Cable (30m)



Wiring Diagram



2961-0.5/2961-1/2961-1.5

020 8200 1122

020 8200 1122

# CAT.5 UTP PATCH CABLES

## Booted Cat.5 UTP Patch Cables (Contd)

### STOCK NO. DESCRIPTION

#### Green UTP Patch Cables

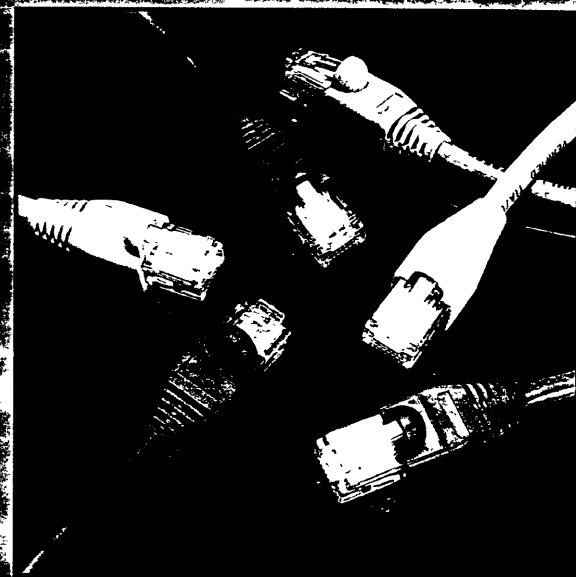
2961-0.5G	RJ45 UTP Green Patch Cable (0.5m)
2961-1G	RJ45 UTP Green Patch Cable (1m)
2961-1.5G	RJ45 UTP Green Patch Cable (1.5m)
2961-2G	RJ45 UTP Green Patch Cable (2m)
2961-3G	RJ45 UTP Green Patch Cable (3m)
2961-5G	RJ45 UTP Green Patch Cable (5m)
2961-8G	RJ45 UTP Green Patch Cable (8m)
2961-10G	RJ45 UTP Green Patch Cable (10m)
2961-15G	RJ45 UTP Green Patch Cable (15m)
2961-30G	RJ45 UTP Green Patch Cable (30m)

#### Yellow UTP Patch Cables

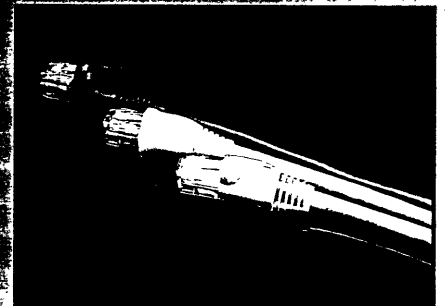
2961-0.5Y	RJ45 UTP Yellow Patch Cable (0.5m)
2961-1Y	RJ45 UTP Yellow Patch Cable (1m)
2961-1.5Y	RJ45 UTP Yellow Patch Cable (1.5m)
2961-2Y	RJ45 UTP Yellow Patch Cable (2m)
2961-3Y	RJ45 UTP Yellow Patch Cable (3m)
2961-5Y	RJ45 UTP Yellow Patch Cable (5m)
2961-8Y	RJ45 UTP Yellow Patch Cable (8m)
2961-10Y	RJ45 UTP Yellow Patch Cable (10m)
2961-15Y	RJ45 UTP Yellow Patch Cable (15m)
2961-30Y	RJ45 UTP Yellow Patch Cable (30m)

#### Black UTP Patch Cables

2961-0.5BK	RJ45 UTP Black Patch Cable (0.5m)
2961-1BK	RJ45 UTP Black Patch Cable (1m)
2961-1.5BK	RJ45 UTP Black Patch Cable (1.5m)
2961-2BK	RJ45 UTP Black Patch Cable (2m)
2961-3BK	RJ45 UTP Black Patch Cable (3m)
2961-5BK	RJ45 UTP Black Patch Cable (5m)
2961-8BK	RJ45 UTP Black Patch Cable (8m)
2961-10BK	RJ45 UTP Black Patch Cable (10m)
2961-15BK	RJ45 UTP Black Patch Cable (15m)
2961-30BK	RJ45 UTP Black Patch Cable (30m)

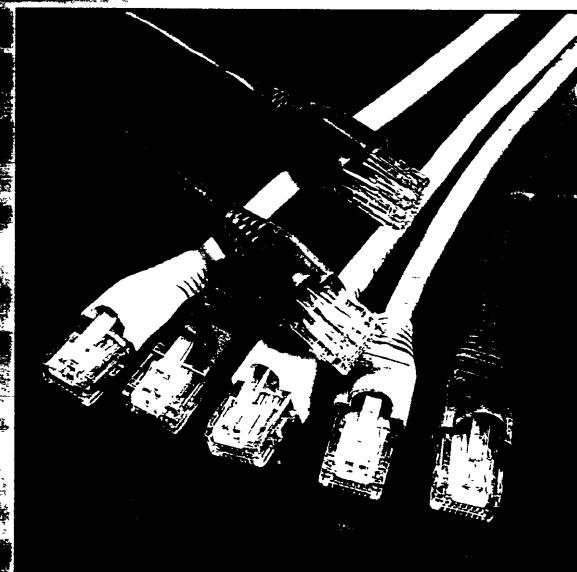


2961-1R/2961-1G/2961-1Y/2961-1B/2961-1BK/2961-1



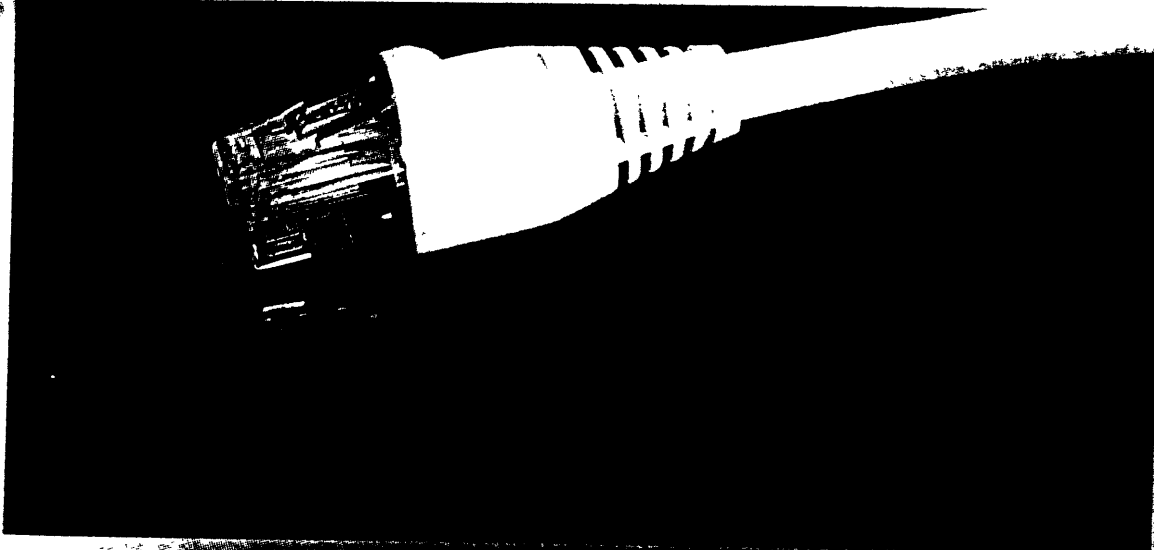
2961-1BK/2961-1Y/2961-1G

- Build or add to your own network with Videk's structured approach
- Useful "key feature" notes on all networking hardware
- Easy to understand network diagrams
- Top quality brand names at competitive prices
- Comprehensive new product range covering mobile, LAN & WAN requirements

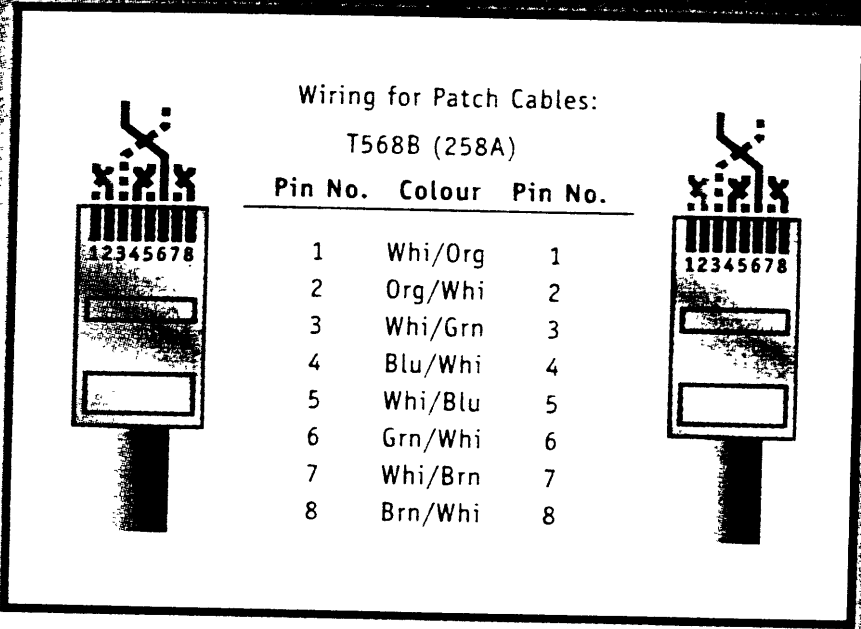


2961-1R/2961-1/2961-1BK/2961-1Y/2961-1G/2961-1B

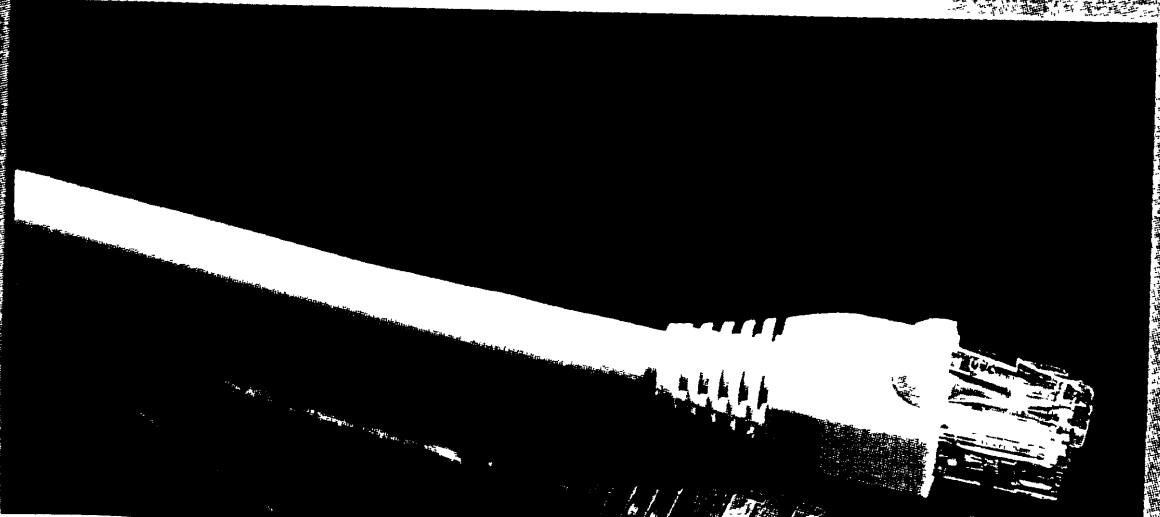
See pages 106 to 127  
for full details



2961-2



**Wiring Diagram**



**STOCK**

*Beige U*

2961-0.5

2961-1

2961-1.5

2961-2

2961-3

2961-5

2961-8

2961-10

2961-15

2961-30

**Boot**

As with the

manufact

For the fu

**STOCK**

*Blue UTP*

2961-0.5B

2961-1B

2961-1.5B

2961-2B

2961-3B

2961-5B

2961-8B

2961-10B

2961-15B

2961-30B

*Red UTP*

2961-0.5R

2961-1R

2961-1.5R

2961-2R

2961-3R