

Digital Delay Units

SERIES: DDU-6

**T²L Interfaced, 5 Outputs
14 pin DIP**

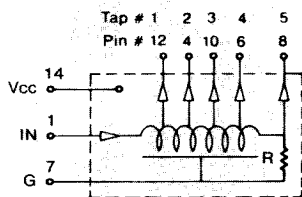
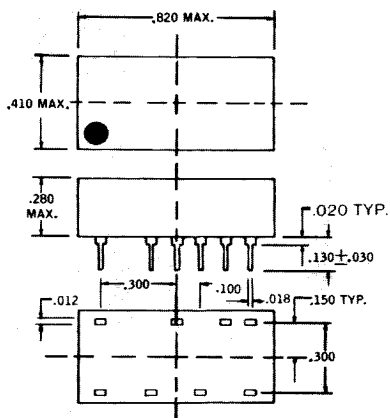
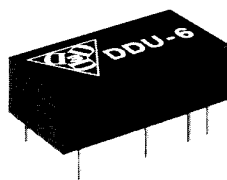


Features:

- Low Cost.
- Completely interfaced for TTL.
- Low profile.
- Fits standard 14 pins DIP socket.

Specifications:

- Outputs: 5, equally spaced.
- Delay tolerance: see table.
- Rise-time: 4 NS typ.
- Minimum pulse width: 40% of total delay.
- Temperature range: 0 to 70°C.
- Temperature coefficient: 100 PPM/°C.
- Supply voltage: 4.75 to 5.25 Vdc.
- Input signal: TTL logic.
- Output fan-out: TTL Schottky load.
- Power dissipation: 375 mw max.



Part No.	Total Delay (NS)	Tap Delay (NS)
* DDU-6-4	4 ± 1	1 ± 0.5
* DDU-6-6	6 ± 1	1.5 ± 0.5
* DDU-6-8	8 ± 2	2 ± 1
* DDU-6-10	10 ± 2	2.5 ± 1
* DDU-6-12	12 ± 2	3 ± 1
<hr/>		
* DDU-6-16	16 ± 2	4 ± 1.5
* DDU-6-20	20 ± 3	5 ± 2
DDU-6-30	30 ± 3	6 ± 2
DDU-6-35	35 ± 3	7 ± 2
DDU-6-40	40 ± 3	8 ± 2
<hr/>		
DDU-6-45	45 ± 3	9 ± 3
DDU-6-50	50 ± 3	10 ± 3
DDU-6-60	60 ± 3	12 ± 3
DDU-6-75	75 ± 4	15 ± 3
DDU-6-100	100 ± 5	20 ± 3
<hr/>		
DDU-6-125	125 ± 6.5	25 ± 3
DDU-6-150	150 ± 7.5	30 ± 3
DDU-6-175	175 ± 8	35 ± 4
DDU-6-200	200 ± 10	40 ± 4
DDU-6-250	250 ± 12.5	50 ± 5

* Time delay measured with respect to 1st tap.
6 NS ± 1 NS inherent delay.

3 Mt. Prospect Avenue, Clifton, New Jersey 07013 ■ (201) 773-2299 ■ FAX (201) 773-9672 ■ TWX 710-989-7008