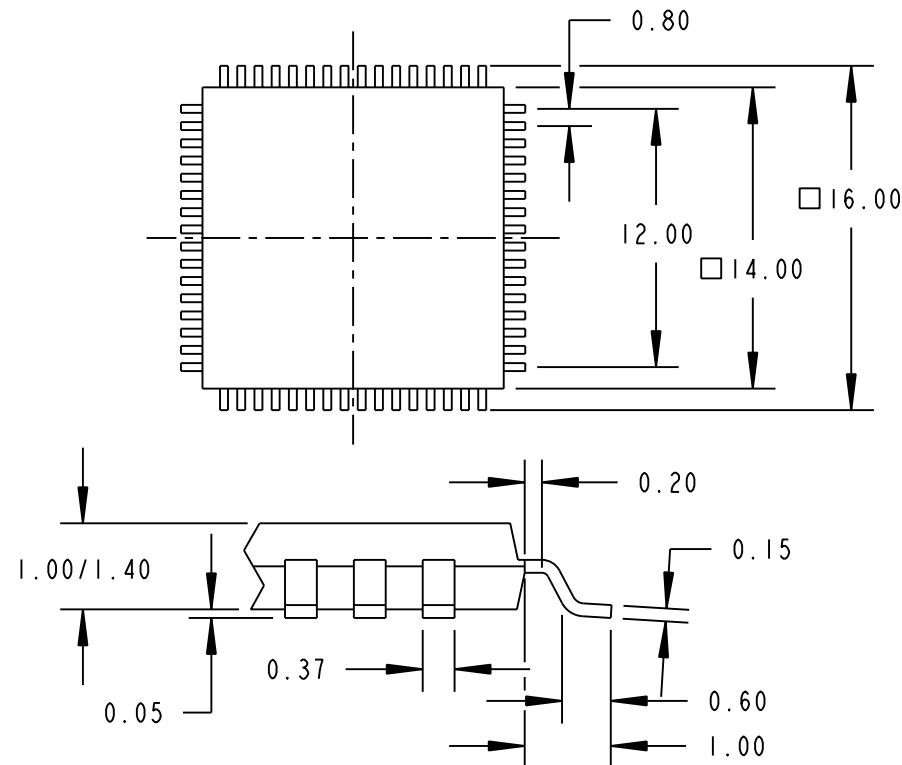
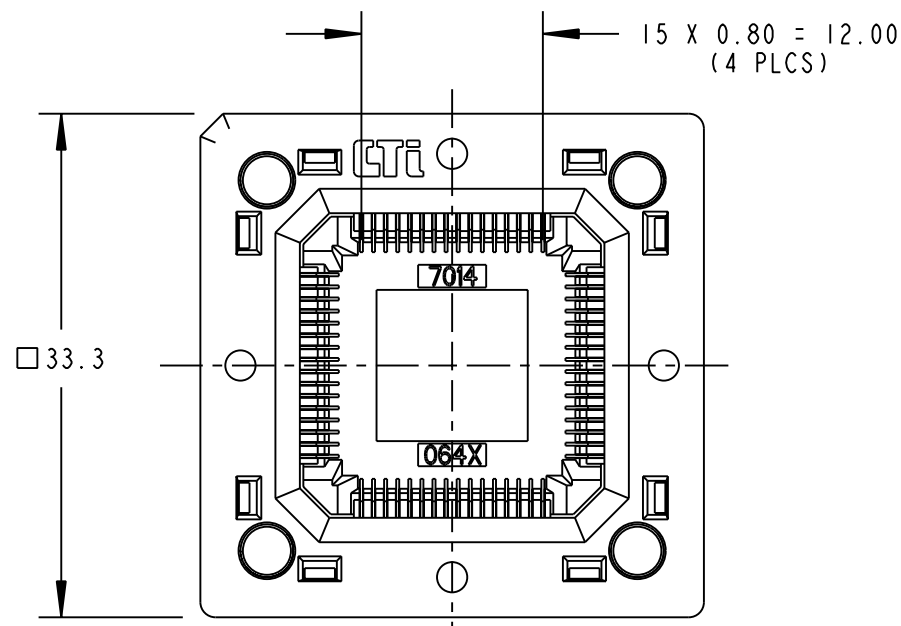
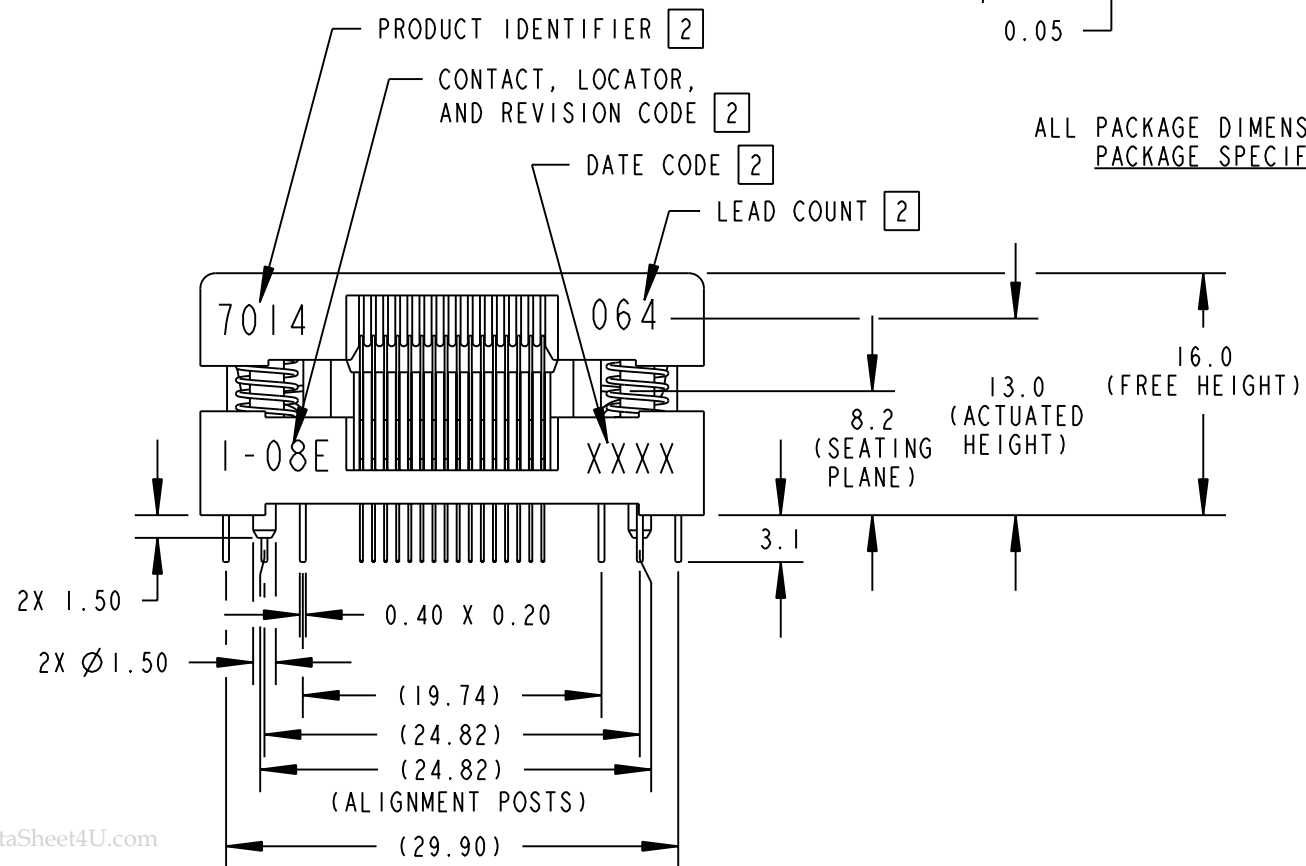
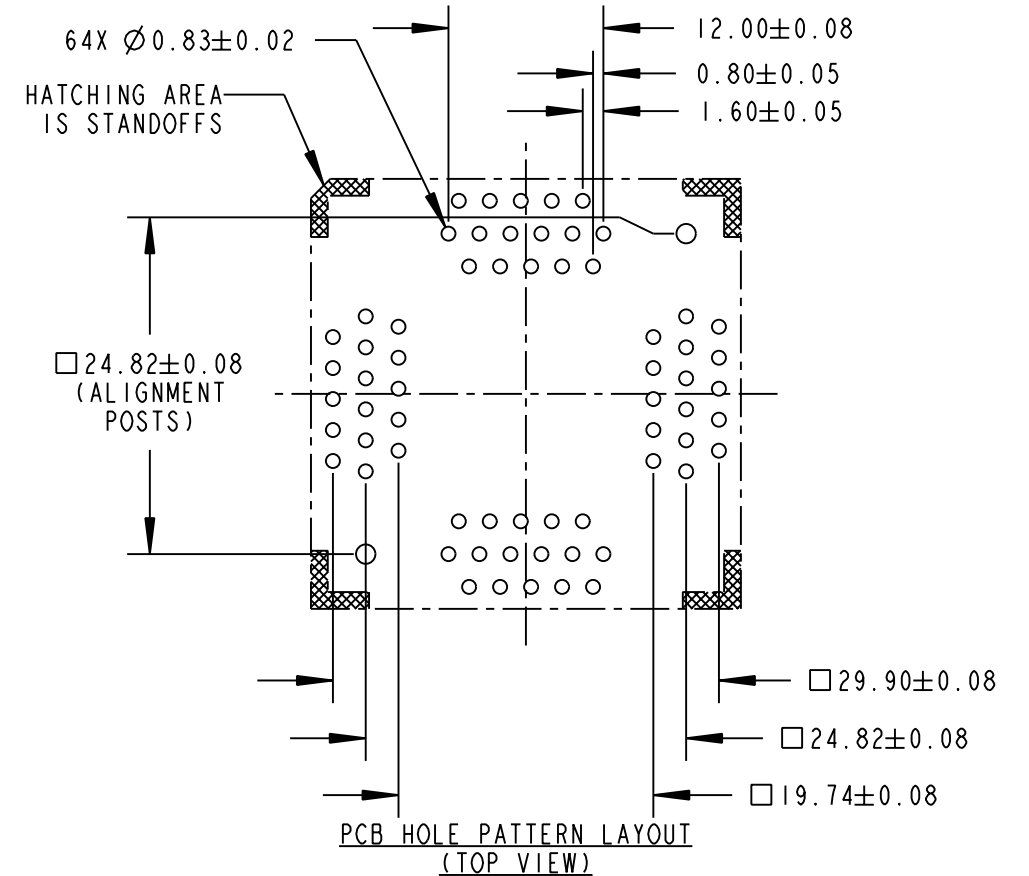


A	C	P	REV	DATE	BY	ECN #	REV	DATE	BY	ECN #	REV	DATE	BY	ECN #
X	-	-	E	6/12/98	SC	3188	E1	11/16/99	SC	3617	E2		SC	3755



ALL PACKAGE DIMENSIONS ARE FOR REFERENCE ONLY
PACKAGE SPECIFICATION IS JEDEC MS-026



NOTES:

- MATERIAL AND FINISH:
SOCKET LID - POLYETHERIMIDE.
SOCKET BASE - POLYETHERIMIDE.
CONTACTS - BeCu, SELECTIVE Au-SnPb OVER Ni PLATING.
SPRINGS - STAINLESS STEEL, PASSIVATED.
- MARKING: 2.0 HIGH, COLOR - WHITE.
- REFER TO SK-0283 FOR CONTACT SEATING HEIGHTS.
- REFER TO SK-0319 FOR NAIL/RIVET PRESS HEIGHTS.

LEGEND		MATERIAL/FINISH	DRAWN	CHECKED	ENGINEER	ENG. SUPRV.	MFG. ENG.	MOLDING	TOOLING	WELLS-CTI Phoenix Arizona USA A subsidiary of PCD Inc.						
©	CRITICAL									THIS DOCUMENT CONTAINS PROPRIETARY INFORMATION THAT IS THE SOLE PROPERTY OF WELLS-CTI. THIS INFORMATION IS TO BE HELD BY ITS RECIPIENT ON A CONFIDENTIAL BASIS, AND IS NOT TO BE DISCLOSED TO OTHERS OR USED WITHOUT WRITTEN CONSENT OF WELLS-CTI.					TOFP SOCKET ASSEMBLY (14mm, 64ld)	
0	NUMBER OF © USED														PART NUMBER 7014-064-1-08	
SIZE B	PROJECTION	SCALE 2.0:1		UNITS: mm [in]		CAD NUMBER		www.DataSheet4U.com								
		DO NOT SCALE				SHEET 1										