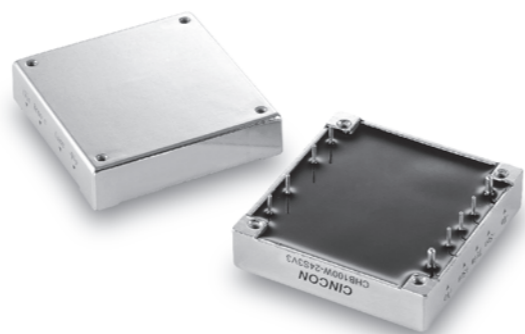


CHB100W

S E R I E S

NEW



**66 TO 100 WATT
 4:1 INPUT RANGE
 DC-DC CONVERTERS**



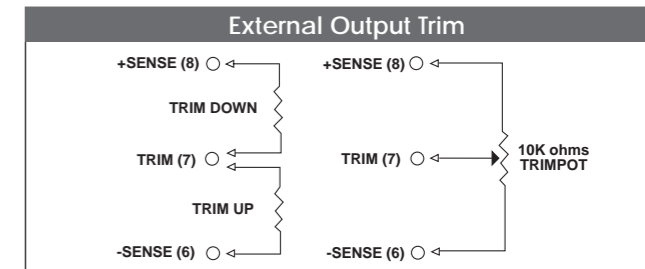
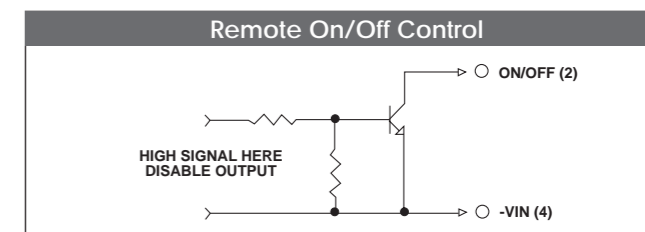
Features

- 66-100W Isolated Output
- 4 : 1 Wide Input Range
- Half-Brick Package
- Efficiency to 88%
- Regulated Outputs
- Five-Sided Shield Metal Case
- Continuous Short Circuit Protection

MODEL NUMBER	INPUT VOLTAGE	OUTPUT VOLTAGE	OUTPUT CURRENT		INPUT CURRENT		% EFF.	SIZE
			MIN.	MAX.	NO LOAD	FULL LOAD		
CHB100W-24S3V3	9-36 VDC	3.3VDC	0mA	20 A	35mA	3374mA	81.5	Half-Brick
CHB100W-24S05	9-36 VDC	5.0VDC	0mA	20 A	35mA	4990mA	83.5	Half-Brick
CHB100W-24S12	9-36 VDC	12 VDC	0mA	8.3 A	35mA	4902mA	85	Half-Brick
CHB100W-24S15	9-36 VDC	15 VDC	0mA	6.7 A	35mA	4817mA	86.5	Half-Brick
CHB100W-24S24	9-36 VDC	24 VDC	0mA	4.17 A	35mA	4849mA	86	Half-Brick
CHB100W-48S3V3	18-75VDC	3.3VDC	0mA	20 A	30mA	1708mA	80.5	Half-Brick
CHB100W-48S05	18-75VDC	5.0VDC	0mA	20 A	30mA	2422mA	86	Half-Brick
CHB100W-48S12	18-75VDC	12 VDC	0mA	8.3 A	30mA	2408mA	86.5	Half-Brick
CHB100W-48S15	18-75VDC	15 VDC	0mA	6.7 A	30mA	2381mA	87.5	Half-Brick
CHB100W-48S24	18-75VDC	24 VDC	0mA	4.17 A	30mA	2367mA	88	Half-Brick

NOTE: 1. Nominal Input Voltage 24 or 48 VDC

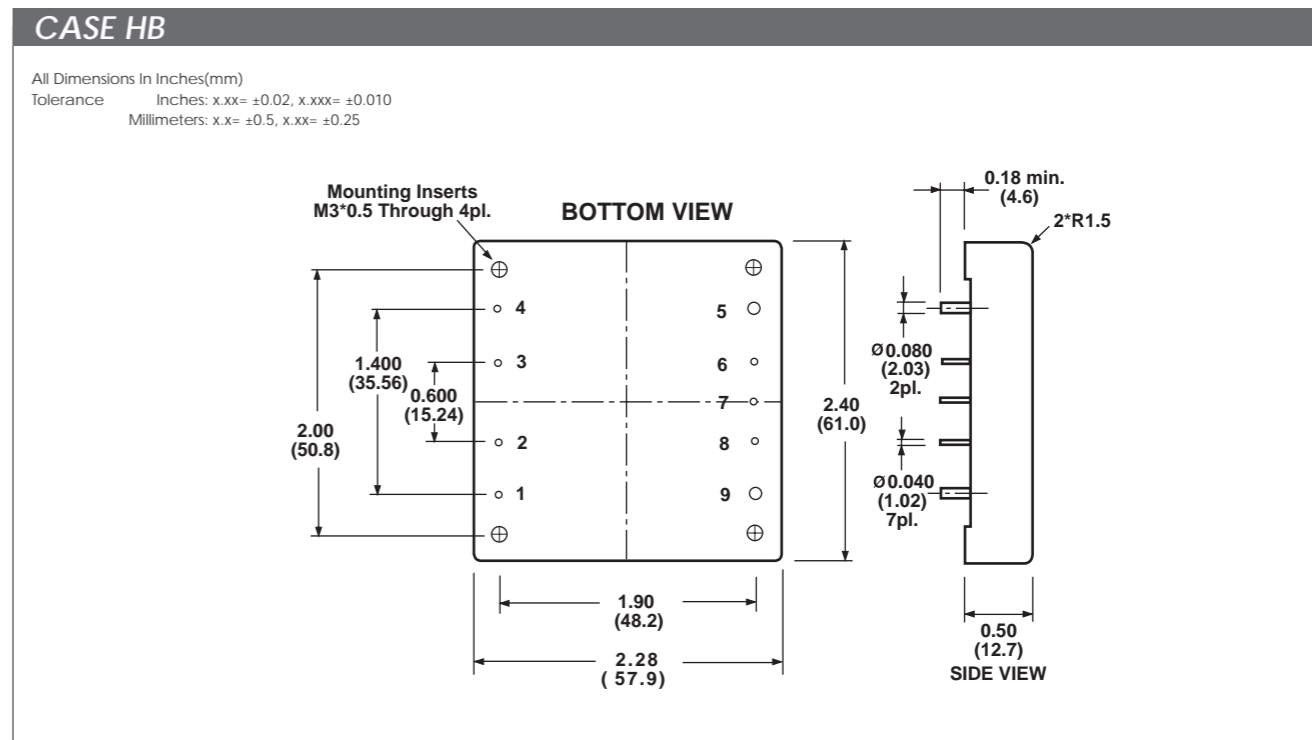
Specifications	
INPUT SPECIFICATIONS:	
Input Voltage Range.....	24V.....9-36V 48V.....18-75V
Undervoltage lockout	24Vin power up.....8.8V 24Vin power down.....8.0V 48Vin power up.....17V 48Vin power down.....16V
Positive Logic Remote ON/OFF ^{4,5}	
Input Filter	PI Type
OUTPUT SPECIFICATIONS:	
Voltage Accuracy :	±1.5% max.
Transient Response :25% Step Load Change.....	<500µ sec.
External Trim Adj. Range	±10%
Ripple & Noise, 20MHz BW	
3.3V & 5V	40mV RMS, max. 100mV pk-pk, max.
12V & 15V	60mV RMS, max. 150mV pk-pk, max.
24V	100mV RMS, max. 240mV pk-pk, max.
Temperature Coefficient.....	±0.03%/°C
Short Circuit Protection.....	Continuous
Line Regulation ¹	±0.2% max.
Load Regulation ²	±0.2% max.
Over Voltage Protection trip Range, % Vo nom.....	115-140%
Current Limit	110% -140% Nominal Output
GENERAL SPECIFICATIONS:	
Efficiency.....	See Table
Isolation Voltage	Input/Output.....1500VDC min. Input/Case.....1500VDC min. Output/Case.....1500VDC min.
Isolation Resistance	10 ⁷ ohm min.
Switching Frequency	250KHz, Typ.
Operating Case Temperature	-40°C to 100°C
Storage Temperature	-55°C to +105°C
Thermal Shutdown, Case Temp.	105°C Typ.
Dimensions	2.28x2.40x0.50 inches (57.9x61.0x12.7 mm)
Case Material.....	Aluminum



PIN CONNECTION	
Pin	Function
1	+V Input
2	ON/OFF
3	CASE
4	-V Input
5	-V Output
6	-Sense
7	Trim
8	+Sense
9	+Vout

NOTE:

1. Measured From High Line to Low Line
2. Measured From Full Load to Zero Load
3. Output Ripple and Noise measured with 10µF tantalum and 1µF Ceramic capacitor across output
4. Logic Compatibility Open Collector ref to -Input
Module ON > 3.5Vdc or Open Circuit
Module OFF < 1.8Vdc
5. Suffix "N" to the Model Number with Negative Logic Remote ON/OFF
Module ON < 1.8Vdc
Module OFF > 3.5Vdc or Open Circuit



All Specifications Typical At Nominal Line, Full Load and 25°C Unless Otherwise Noted.

CHB100W