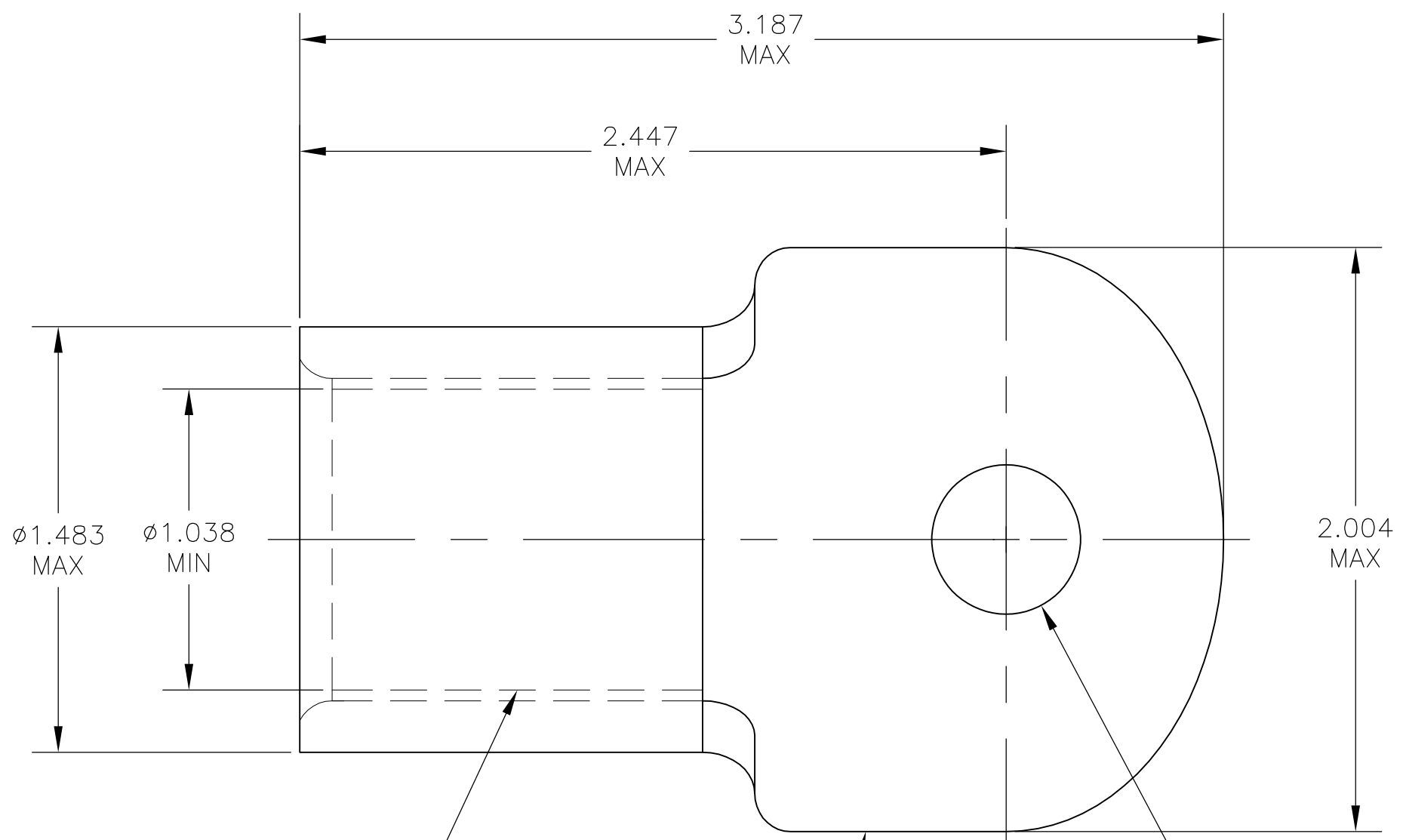


THIS DRAWING IS UNPUBLISHED. RELEASED FOR PUBLICATION
 © COPYRIGHT - BY TYCO ELECTRONICS CORPORATION. ALL RIGHTS RESERVED.

LOC	DIST	REVISIONS					
G	86	P	LTR	DESCRIPTION	DATE	DWN	APVD
			D	ECR-07-024762 (REDRAWN IN AUTOCAD)	04APR08	HMR	JR



- 1 TONGUE MATERIAL THICKNESS: .178±.004.
- 2 BODY - CU PER ASTM B-152
INSERT - BRASS PER ASTM B-36
- 3 BODY & INSERT - TIN PLATING
PER ASTM B-545

OBSOLETE	5/8	.656	52569-5
	1/2	.515	52569-4
OBSOLETE	7/16	.453	52569-3
OBSOLETE	3/8	.390	52569-2
OBSOLETE	5/16	.328	52569-1
OBSOLETE	1/4	.265	52569
	"B"	"A"	PART NO

INSERT
 BODY
 ϕ "A"±.005
 (FOR "B" STUD)

1	WIRE TERMINAL	SEE ABOVE TABLE
QTY	DESCRIPTION	PART NO

THIS DRAWING IS A CONTROLLED DOCUMENT.		DWN	RAGHAVENDRA	04APR2008	Tyco Electronics Corporation Harrisburg, PA 17105-3608		
DIMENSIONS: INCHES		CHK	JEFF RUTH	04APR2008			
TOLERANCES UNLESS OTHERWISE SPECIFIED:		APVD	JEFF RUTH	04APR2008	NAME		
0 PLC ± - 1 PLC ± - 2 PLC ± - 3 PLC ± .008 4 PLC ± - ANGLES ± 5°		PRODUCT SPEC		WIRE TERMINAL			
MATERIAL		APPLICATION SPEC		COPALUM - STRANDED/SOLID			
FINISH		WEIGHT		WIRE SIZE 500-600 MCM			
		-		SIZE	CAGE CODE	DRAWING NO	RESTRICTED TO
		-		A3	00779	G-52569	-
CUSTOMER DRAWING				SCALE	2:1	SHEET	1 OF 1
				REV	D		