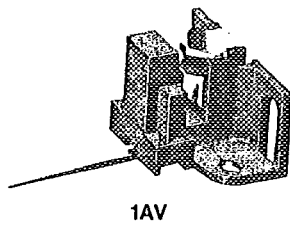


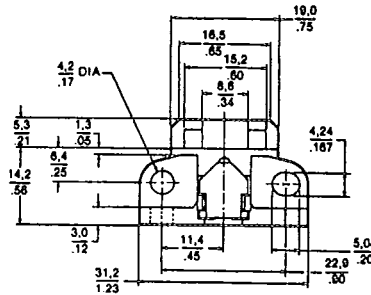
AV Vane operated position sensors

T-65-13



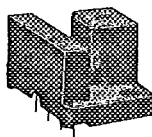
1AV

TYPICAL DIMENSIONS



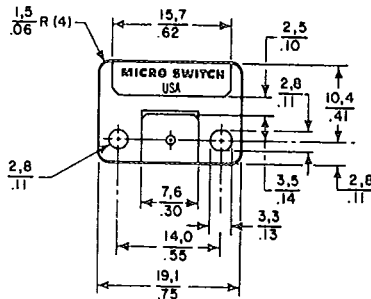
FEATURES

- Hall effect sensor
- Single digital output . . . current sinking or sourcing
- Versatile mounting
- 3 pin solder/quick-connect terminals or leadwires
- 6 to 24 VDC power supply
- Lower operating force
- UL Recognized housing and leadwires



3AV/4AV

TYPICAL DIMENSIONS



FEATURES

- Hall effect sensor
- Dual digital outputs . . . current sinking
- Small size
- 4 pin in-line printed circuit board terminals or leadwires
- Closely controlled differential to predict pulse width
- 4.5 to 5.5 VDC or 6 to 24 VDC power supply
- Connector block available

PRINCIPLE OF OPERATION

AV vane sensors are operated by passing a ferrous vane through the gap between the Hall sensor and the magnet, shunting the magnetic flux away from the sensor.* AV's can be used as limit switches by operating with a large vane; as tachometer sensors by using a toothed wheel; or, as machinery synchronizing elements by using cams or sectors. 1AV and 3AV/4AV Series have many features in common, such as:

*See Catalog 20 for vane actuation information.

- Operation by a low cost, easy to fabricate ferrous vane
- Magnet and sensor incorporated in same rugged package
- Sealed construction . . . unaffected by dust or dirt
- 0 to 100 kHz operating speed . . . no minimum speed of operation
- On and Off times programmable by vane dimensioning
- Precision mechanical operating characteristics

For more information, see Catalog 20, Solid State sensors.

AV ORDER GUIDE

Supply Voltage (VDC)	Supply Current (mA max.)	Type	Current per Output	Operating Temperature °C	Termination	Catalog Listing		
						w/o Conn.	w/Conn.	
4.5 to 5.5	7.0	Sink	4 mA	- 40 TO 85	PC board	3AV1C	---	
			8 mA		Leadwires	3AV2C	---	
			4 mA	- 40 to 125	PC board	4AV11C	4AV11C-T1	
			8 mA		Leadwires	4AV12C	---	
6 to 24	13.0		Sink	10 mA	- 40 to 85	PC board	3AV1A	---
				20 mA		Leadwires	3AV2A	---
				10 mA	- 40 to 125	PC board	4AV11A	4AV11A-T1
				20 mA		Leadwires	4AV12A	---
		Source	Leadwires	1AV2B	---			
			Sink	Solder/Q.C.	1AV3B	---		
				Leadwires	1AV2A	---		
				Solder/Q.C.	1AV3A	---		