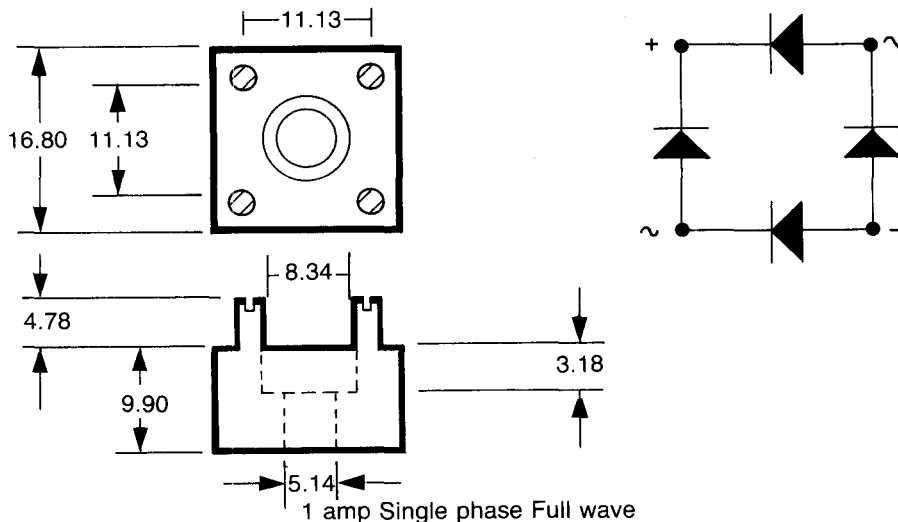


Bridge Rectifiers

Type*	PIV per leg	Average output DC	The encapsulation in epoxy resin offers high resistance to mechanical and thermal shock and humidity. Simple fixing is made by one 4 mm bolt. Electrical connections are made to easily soldered turrets.
RB5/1	50	1 amp	A replacement for the 1B05J05-1B10J series.
RB20/1	200	1 amp	
RB40/1	400	1 amp	
RB80/1	800	1 amp	
RB100/1	1000	1 amp	



Type*	PIV per Leg	Max RMS Input Volts	Average Output Amps DC				Peak 1 cycle Forward Surge Amps	V _f 1.0 Max at If Amps per Leg	Max V _f across output terminals		Max I _R with PIV across output terminals μ A
			Case Temp on Heat Sink		Ambient Temp No Heat Sink				V _{fat}	Amps	
			25°C	100°C	25°C	100°C					
RB5/1	50	35	1.0	0.5	1.0	0.4	50	0.8	2.0	0.8	10
RB20/1	200	140	1.0	0.5	1.0	0.4	50	0.8	2.0	0.8	10
RB40/1	400	280	1.0	0.5	1.0	0.4	50	0.8	2.0	0.8	10
RB80/1	800	560	1.0	0.5	1.0	0.4	50	0.8	2.0	0.8	10
RB100/1	1000	700	1.0	0.5	1.0	0.4	50	0.8	2.0	0.8	10

*For avalanche type add suffix A in all cases.
 Maximum Peak Reverse Power: 3.5kW 10 μ S 25°C.
 Maximum operating and storage temperature: -65°C to +150°C.
 Derate linearly from 25°C to zero at 150°C.