

T-79-05-20

IR91458/IR91458N

General Purpose Dual
Operational Amplifier

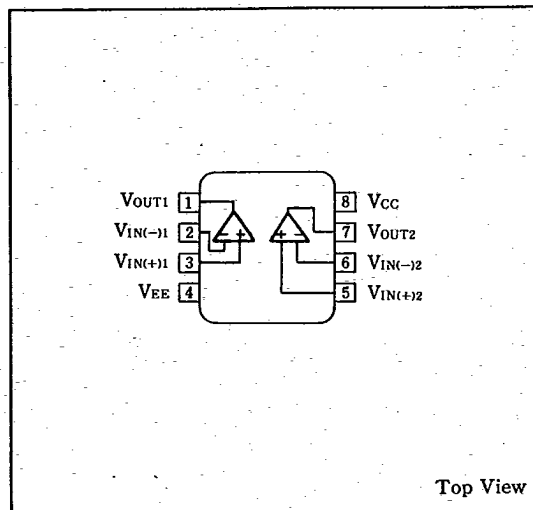
Description

The IR91458/IR91458N is a general purpose dual operational amplifier, which have short-circuit protection for the internal frequency compensation to ensure stability without external components.

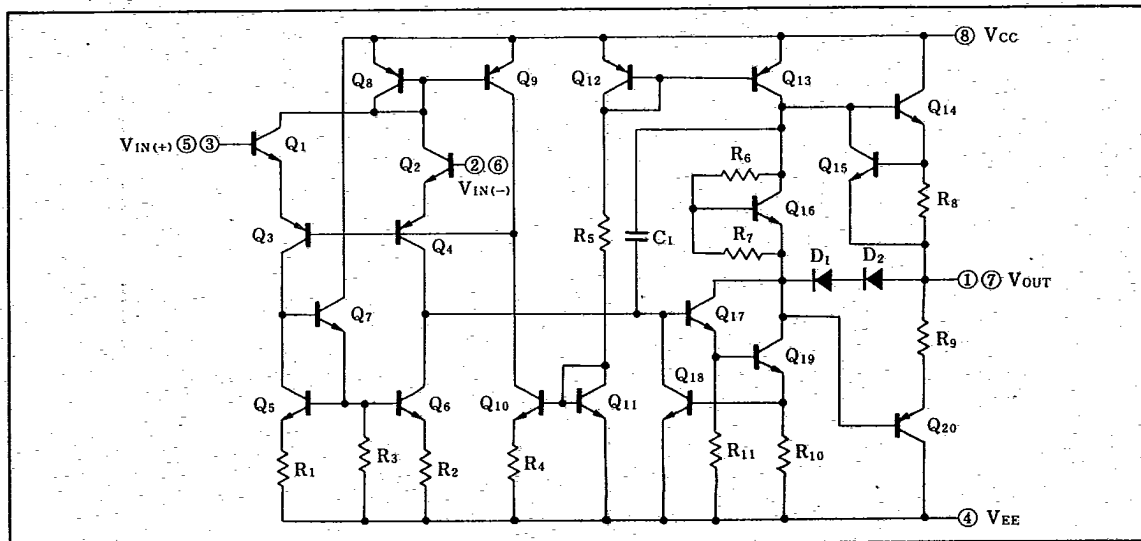
Features

1. Short-circuit protection
2. No frequency compensation required
3. Wide common-mode and differential voltage range
4. Low power dissipation
5. 8-pin dual-in-line package (IR91458)
8-pin small-outline package (IR91458N)

Pin Connections



Equivalent Circuit



SHARP

T-79-05-20

(Ta=25°C)

Absolute Maximum Ratings

Parameter	Symbol	Condition	Rating	Unit	
Supply voltage	$V_{CC}-V_{EE}$		36	V	
Differential input voltage	V_{ID}		± 30	V	
In-phase input voltage*1	V_{ICM}		± 15	V	
Power dissipation	P_D	$T_a \leq 25^\circ\text{C}$	IR91458	500	mW
			IR91458N	400	
P_D derating ratio	$\Delta P_D/^\circ\text{C}$	$T_a > 25^\circ\text{C}$	IR91458	4	mW/°C
			IR91458N	4	
Operating temperature	T_{opr}		$-20 \sim +70$	°C	
Storage temperature	T_{stg}		$-55 \sim +150$	°C	

*1 If supply voltage falls below 15V, input voltage will be equal to the supply voltage

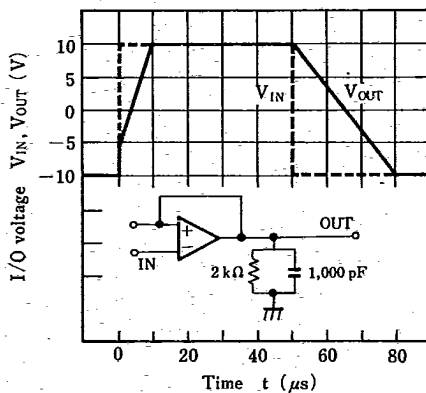
Electrical Characteristics

(V_{CC}=15V, V_{EE}=-15V, Ta=25°C)

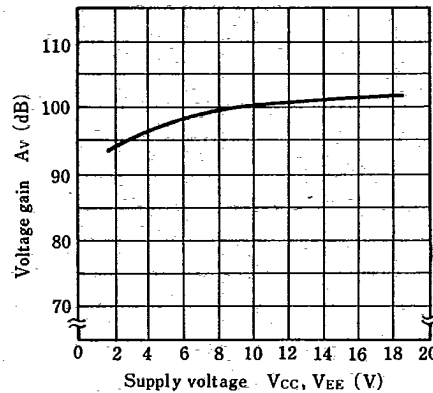
Parameter	Symbol	Condition	MIN.	TYP.	MAX.	Unit
Input offset voltage	V_{IO}	$R_S \leq 10\text{k}\Omega$		1.0	6.0	mV
Input offset current	I_{IO}			80	200	nA
Input bias current	I_B			200	500	nA
Input resistance	R_{IN}		0.3	1.0		MΩ
Supply current	I_{CC}			3.0	5.6	mA
Major amplitude voltage gain	A_V	$V_{OUT} = \pm 10\text{V}, R_L \geq 2\text{k}\Omega$	86	104		dB
Output voltage amplitude	V_{OS}	$R_L = 10\text{k}\Omega$	± 12	± 14		V
		$R_L = 2\text{k}\Omega$	± 10	± 13		
Input voltage range	V_{ICM}		± 12			V
Common signal rejection ratio	CMR	$R_S \leq 10\text{k}\Omega$	70	90		dB
Supply voltage rejection ratio	SVR	$R_S \leq 10\text{k}\Omega$	77	96		dB

Electrical Characteristic Curves (Unless otherwise specified, Ta=25°C)

Response time Characteristics



Voltage gain—Supply voltage Characteristics



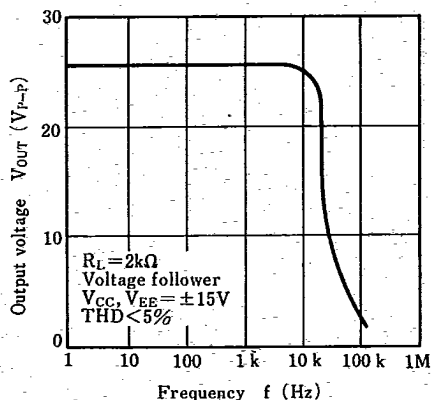
SHARP

General Purpose Dual Operational Amplifier

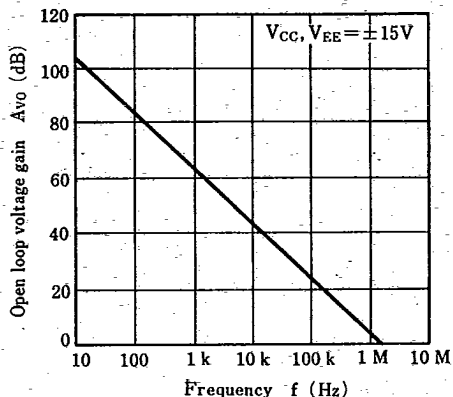
IR91458/IR91458N

T-79-05-20

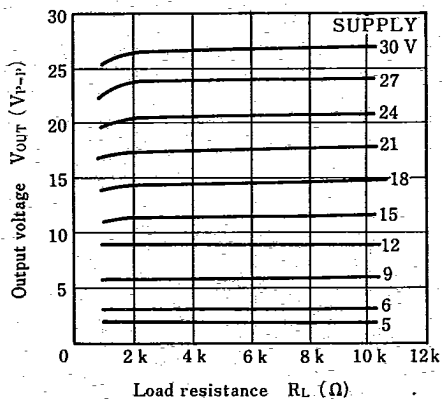
Output voltage — Frequency Characteristics



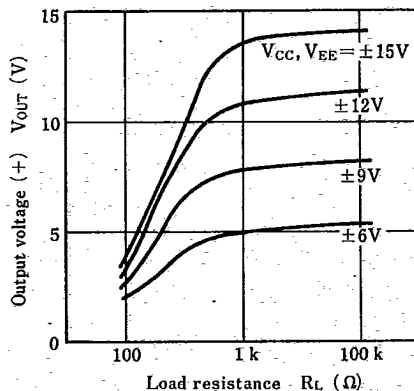
Open loop voltage gain — Frequency Characteristics



Output voltage — Load resistance Characteristics



Output voltage (+) — Load resistance Characteristics



Output voltage (-) — Load resistance Characteristics

