



DATA SHEET

3Com® SuperStack® 3 Baseline Hubs and Switches

Key Benefits

Affordable hubs and switches to support a wide range of bandwidth requirements.

Solutions For All Your Needs

The industry's most complete range of 10, 10/100, and 10/100/1000 Mbps unmanaged hubs and switches means easy, transparent scalability to keep pace with your bandwidth needs.

Leading Edge Technology

The Baseline family includes the industry's first tri-speed 10/100/1000 Mbps switch and state-of-the-art Gigabit Ethernet over copper connectivity.

Affordable

3Com® continues to drive down the cost of desktop connectivity, including making Fast Ethernet and Gigabit Ethernet technology more affordable for more users and applications.

Whether you're a small or medium-sized business that's growing fast, or a large corporation juggling constant growth at the edge of the network, you want LAN solutions that are affordable, adaptable and trouble-free. 3Com delivers this unique blend of value and ease, so companies can quickly set up their networks to support their business, and then stop worrying about their networks so they can focus on their business.

The SuperStack 3 family of Baseline hubs and switches comprises a broad range of product types and connectivity options to satisfy the need for high-quality products at an affordable price—enabling even the most budget-

Easy to Install and Use

All 3Com SuperStack® 3 Baseline products are shipped ready to work out of the box. No configuration is necessary.

Non-Stop, Worry-Free Operation

The Baseline family has the best in-service reliability track record, based on thousands of user installations. Just plug in Baseline products and they run...and run.

Lifetime Limited Warranty

Ensures peace of mind. Includes fan and power supply.

conscious organizations to jump up to the next level of networking power in order to fuel their growth and ensure their competitiveness in the age of e-business and the Internet.

The baseline product family includes 10 Mbps workgroup hubs, auto-sensing dual speed 10/100 hubs, and auto-sensing 10/100 switches with or without a Gigabit uplink. Now 3Com has expanded the connectivity options for small and medium-sized LANs with the breakthrough flexibility of the industry's first tri-speed switch, the SuperStack 3 Baseline auto-sensing 10/100/1000 switch, the one switch that supports the widest range of business applications.

Baseline Hubs offer exceptional value by offering the lowest cost-per-port in the SuperStack 3 family and the most cost-effective way to add new users to a network.

3Com SuperStack 3 Baseline Hubs

3Com SuperStack 3 Baseline hubs provide high-quality connectivity solutions at entry-level prices for shared Ethernet networks that don't require comprehensive management. These hubs are ideal for low-intensity network environments such as general office applications using small networked files. With the lowest per-port cost in the SuperStack 3 family, the Baseline hubs offer exceptional value, and provide the most cost-effective way to add new users to a network.

SuperStack 3 Baseline hubs provide 12- or 24-10BASE-T RJ-45 ports, allowing each hub to connect either 12 or 24 users. Each hub has an MDI/MDIX switch to connect multiple hubs; this allows you to expand the network using normal UTP cabling. The Baseline hubs provide a transceiver interface slot, allowing connection to alternative network media, such as fiber or coax. Optional transceiver interface modules are available. SuperStack 3 Baseline hubs are pre-configured and ready to use straight from the box.

- 12 or 24 RJ-45 10BASE-T connections
- MDI/MDIX switchable port allows for simple cascading of hubs without the need for special crossover cable.
- Slot for optional transceiver interface module provides a connection to legacy networking devices or fiber.
- Diagnostic LEDs indicate network traffic, port status, and collisions, making it easy to spot-check faults and check individual port status.

SuperStack 3 Baseline Dual Speed Hubs

The 3Com SuperStack 3 Baseline dual speed hubs give you the simplest way to migrate to high-speed Fast Ethernet networking while protecting your existing network investment. Power users who require Fast Ethernet can coexist with Ethernet users without draining valuable network bandwidth.

Each Baseline dual speed hub has 12 or 24 auto-sensing ports. The SuperStack 3

Baseline dual speed hub is pre-configured and ready to use straight from the box.

- 12 or 24 RJ-45 10BASE-T/100BASE-TX connections.
- Auto sensing on each port—automatically senses the speed of the network device at the other end of the cable and optimizes performance.
- Integrated Ethernet to Fast Ethernet switch provides seamless integration between 10 Mbps and 100 Mbps segments.
- Conforms as a Class II Fast Ethernet repeater, which means that two SuperStack 3 Baseline dual speed hubs can be cascaded in series (the maximum allowed according to the Fast Ethernet specification).
- MDI/MDIX switchable port allows for simple cascading of hubs without the need for a special crossover cable.
- Diagnostic LEDs indicate port status, network traffic, and collisions on 10 Mbps and 100 Mbps segments, making it easy to spot-check faults and check individual port status.

SuperStack 3 Baseline 10/100 Switches

SuperStack 3 Baseline switches are ideal for any environment where raw power and performance are needed, but management is not required. The majority of today's networked devices (including PCs, servers and printers) operate at either 10 Mbps or 100 Mbps. The SuperStack 3 Baseline 10/100 switch can auto-sense whether a network device supports 100 Mbps and automatically optimize the connection for this throughput. The SuperStack 3 Baseline 10/100 switch plus 1000BASE-T provides this same bandwidth optimization, plus a single Gigabit uplink. A Gigabit uplink allows many users to access a server or network backbone concurrently, and provides the best possible performance and scalability for a LAN.

Baseline 10/100 switches provide 12 or 24 10/100BASE-TX switched ports and are pre-configured and ready to use straight from the box.

The SuperStack 3 Baseline 10/100/1000 Switch is ready to use straight from the box.

- The SuperStack 3 Baseline 10/100 switch provides 12 or 24 RJ-45 10BASE-T/100BASE-TX auto-sensing ports that auto-negotiate connection speed and full-duplex/half-duplex mode.
- The SuperStack 3 Baseline 10/100 switch plus 1000BASE-T provides 24 RJ-45 10BASE-T/100BASE-TX auto-sensing ports that auto-negotiate connection speed and full-duplex/half-duplex mode. Port 25 is a 1000BASE-T port capable of auto-negotiation with the connected port to operate at 1000BASE-T full duplex. It auto-senses an MDI/MDIX connection and can be used to connect to either another 1000BASE-T switch port or to a 1000BASE-T server or workstation without additional configuration.
- IEEE 802.3x flow control ensures network traffic is not lost during peaks in traffic rates on high-throughput, full-duplex links.
- Diagnostic LEDs indicate network traffic and port status of each port, making it easy to spot-check faults and check individual port status.

No power failures

All SuperStack 3 Baseline products are equipped with a connector to support the SuperStack 3 Advanced Redundant Power System (ARPS), for uninterrupted operation in the event of a power supply failure. Power conditioning and back-up products are recommended by leading UPS vendors such as the American Power Conversion Corporation (APC). For details on relevant power products from APC see <http://3com.apcc.com>.

SuperStack 3 Baseline 10/100/1000 Switches

The breakthrough SuperStack 3 Baseline 10/100/1000 switch is ideal for users who want the high-speed performance of 10/100/1000 switching but do not need sophisticated management capabilities. The SuperStack 3 Baseline 10/100/1000 switch provides high performance switched connections to 10

Mbps, 100 Mbps, and 1000 Mbps hubs, servers, printers and workstations.

The SuperStack 3 Baseline 10/100/1000 switch has six shielded RJ-45, 10/100/1000 Mbps auto-negotiating ports on the front panel. Each 10/100/1000 Mbps port automatically determines the speed, duplex mode, and MDIX mode of the connected equipment and provides a suitable switched connection (1000BASE-T connections operate in full duplex mode only).

The SuperStack 3 Baseline 10/100/1000 switch is pre-configured and ready to use straight from the box.

- The SuperStack 3 Baseline 10/100/1000 switch provides six RJ-45 10BASE-T/100BASE-TX/1000BASE-T auto-sensing ports that also auto-negotiate connection speed, MDI/MDIX mode and full-duplex/half-duplex mode.
- IEEE 802.3x flow control ensures that network traffic is not lost during peaks in traffic rates on high-throughput, full-duplex links.
- Diagnostic LEDs indicate network traffic and port status of each port, making it easy to spot-check faults and check individual port status.

10/100/1000 Auto sensing

An auto-sensing port will automatically adjust its speed according to the equipment to which it is connected. When the UTP cable is connected and the link is first established, the hub or switch will instantly and automatically sense the maximum speed of the device at the other end of the cable. It will communicate with the other device at 1000 Mbps (for the 10/100/1000 tri-speed switch) or 100 Mbps (for a 10/100 switch hub or switch) or else it will run at 10 Mbps.

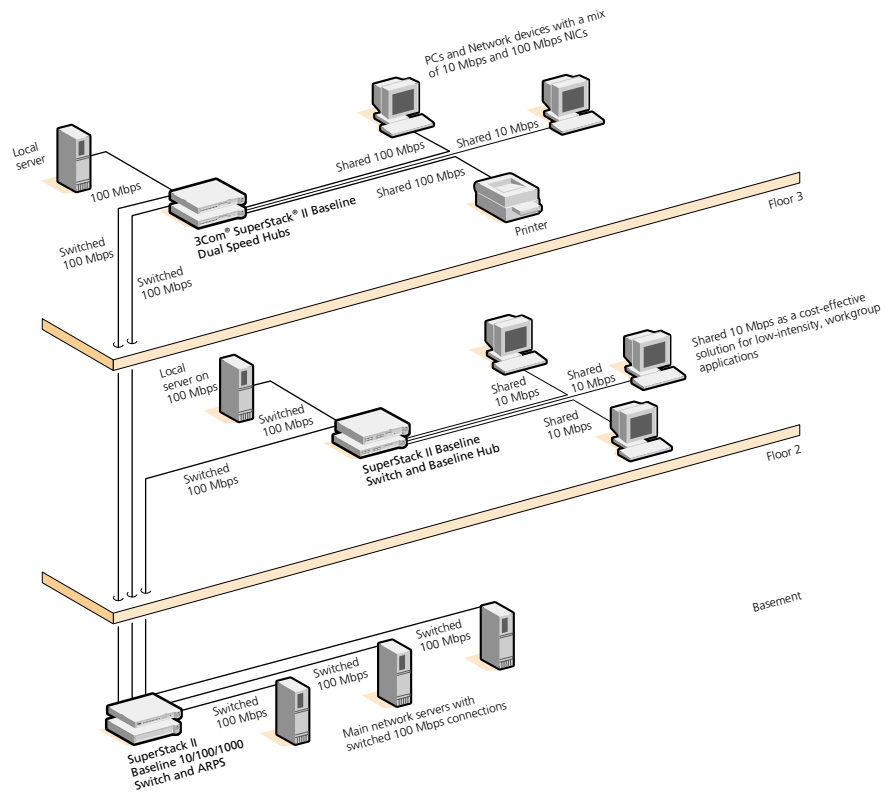
The SuperStack 3 Baseline 10/100/1000 Switch also auto detects the cable type so it can easily be connected to any PC, server, hub or switch.

Note: Although you are able to use Category 3 grade cabling for 10 Mbps links, you must use Category 5 grade cabling for links running at 100 Mbps or 1000 Mbps.

A Complete Solution for a Medium Enterprise or Branch Office

This shows a medium-sized office using a combination of SuperStack 3 Baseline products. A mix of switched and shared 10 Mbps and 10/100 Mbps delivers higher performance connections where they are needed, while keeping the overall system cost to a minimum.

In the basement, a single SuperStack 3 Baseline 10/100/1000 switch provides 100 Mbps or 1000 Mbps switched links to the floors and to each of the main servers.



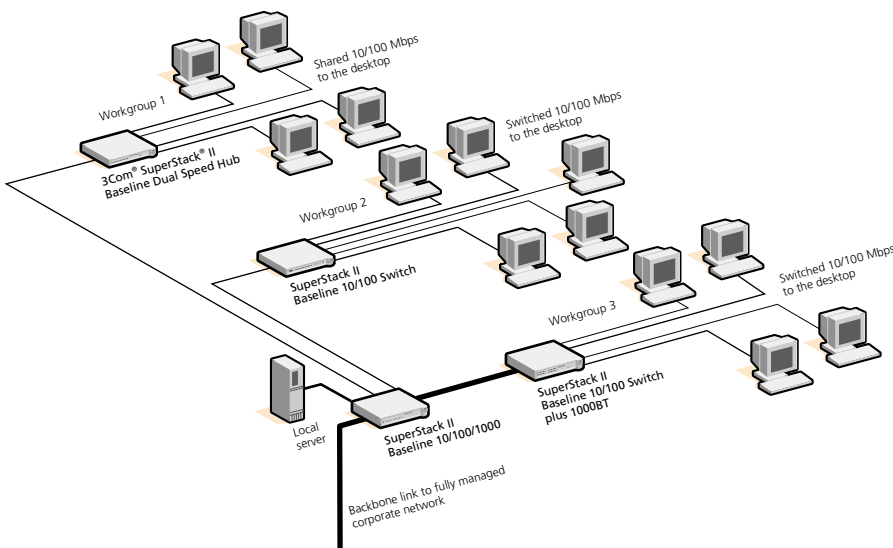
SuperStack 3 Baseline Within the Managed Network Environment

As part of the SuperStack 3 family, SuperStack 3 Baseline products can be integrated smoothly and effectively into a 3Com enterprise network solution that employs network management but that does not require it all the way to the desktop.

In this example, network management is used at the core of the network, and is connected to the workgroup by a single 1000 Mbps link.

High-performance, unmanaged connections are then provided to desktops by the SuperStack Baseline products, as shown.

Used in this way, reliable, high-speed network connections can be delivered to the desktop in an extremely cost-effective way, while ensuring complete compatibility and fitting in with the corporate network structure.



Specifications

SuperStack 3 Baseline Hubs

3C16440A (12 port)
3C16441A (24 port)

Physical

Width: 440 mm (17.3 in)
Depth: 224 mm (8.8 in)
Height: 43.6 mm (1.7 in)
Weight: 2.1 kg (5 lb)

Interfaces

12/24 RJ-45 Ethernet

LED Indicators

Power, network traffic, collisions

Functional

ISO 8802-3, IEEE 802.3 (Ethernet)

Electrical

Power inlet: IEC 320
AC line frequency: 50/60 Hz
Input voltage: 100-240 VAC
Current rating: 1A (max)
Maximum power consumption: 34/44W
Maximum power dissipation: 116/150 BTU/hr
Redundant power connector: Type 1 60W

Safety

UL 1950, EN 60950, CSA 22.2 #950, IEC 60950

Emissions

EN 55022 Class A, FCC Part 15 Subpart B Class A, ICES-003 Class A, VCCI Class A, AS/NZS 3548 Class A, CNS 13438 Class A

Immunity

EN 55024

Environmental

Operating temperature: 0° to 50°C (32° to 122°F)
Humidity: 10 to 90% (non-condensing)
Standard: EN 60068 (IEC 68)

SuperStack 3 Baseline Dual Speed Hubs

3C16592B (12 port)
3C16593B (24 port)

Physical

Width: 440 mm (17.3 in)
Depth: 173 mm (6.8 in)
Height: 43.6 mm (1.7 in)
Weight: 2.1 kg (5 lb)

Interfaces

12/24 RJ-45 Ethernet

LED Indicators

Power, network traffic, collisions, LAN segment

Functional

ISO 8802-3, IEEE 802.3 (Ethernet), IEEE 802.3u (Fast Ethernet), IEEE 802.1d (bridging)
MAC addresses: 4,000

Electrical

Power inlet: IEC 320
AC line frequency: 50/60 Hz
Input voltage: 100-240 VAC
Current rating: 1A (max)
Maximum power consumption: 25/42W
Maximum power dissipation: 86/142 BTU/hr
Redundant power connector: Type 1 60W

Safety

UL 1950, EN 60950, CSA 22.2 #950, IEC 60950

Emissions

EN 55022 Class A, FCC Part 15 Subpart B Class A, ICES-003 Class A, VCCI Class A, AS/NZS 3548 Class A, CNS 13438 Class A

Immunity

EN 55024

Environmental

Operating temperature: 0° to 50°C (32° to 122°F)
Humidity: 10 to 90% (non-condensing)
Standard: EN 60068 (IEC 68)

SuperStack 3 Baseline 10/100 Switches

3C16464C (12 port)
3C16465C (24 port)

Physical

Width: 440 mm (17.3 in)
Depth: 235 mm (9.3 in)
Height: 43.6 mm (1.7 in)
Weight: 2.6 kg (6 lb)

Interfaces

12/24 RJ-45 Ethernet

LED Indicators

Power, network traffic/duplex mode, link status/speed

Functional

ISO 8802-3, IEEE 802.3 (Ethernet), IEEE 802.3u (Fast Ethernet), IEEE 802.1d (bridging), IEEE 802.3x (flow control)
Mac addresses: 4,000

Electrical

Power inlet: IEC 320
AC line frequency: 50/60 Hz
Input voltage: 100-240 VAC
Current rating: 1A (max)
Maximum power consumption: 49/88W
Maximum power dissipation: 165/300 BTU/hr
Redundant power connector: Type 2

Safety

UL 1950, EN 60950, CSA 22.2 #950, IEC 60950

Emissions

EN 55022 Class A, FCC Part 15 Subpart B Class A, ICES-003 Class A, VCCI Class A, AS/NZS 3548 Class A, CNS 13438 Class A

Immunity

EN 55024

Environmental

Operating temperature: 0° to 50°C (32° to 122°F)
Humidity: 10 to 90% (non-condensing)
Standard: EN 60068 (IEC 68)

Specifications, *continued*

SuperStack 3 Baseline 10/100 Switch (24 port plus 1000BASE-T)

3C16467

Physical

Width: 440 mm (17.3 in)
Depth: 235 mm (9.3 in)
Height: 43.6 mm (1.7 in)
Weight: 3 kg (7 lb)

Interfaces

24 RJ-45 Ethernet

LED Indicators

Power, network traffic/duplex mode, link status/speed

Functional

ISO 8802-3, IEEE 802.3 (Ethernet), IEEE 802.3u (Fast Ethernet), IEEE 802.1d (bridging), IEEE 802.3x (flow control), IEEE 802.3ab (Gigabit Ethernet)

MAC addresses: 4,000

Electrical

Power inlet: IEC 320
AC line frequency: 50/60 Hz
Input voltage: 100-240 VAC
Current rating: 1A (max)
Maximum power consumption: 90W

Maximum power dissipation: 306 BTU/hr

Redundant power connector: Type 2

Safety

UL 1950, EN 60950, CSA 22.2 #950, IEC 60950

Emissions

EN 55022 Class A, FCC Part 15 Subpart B Class A, ICES-003

Class A, VCCI Class A, AS/NZS 3548 Class A, CNS 13438 Class A

Immunity

EN 55024

Environmental

Operating temperature: 0° to 50°C (32° to 122°F)

Humidity: 10 to 90% (non-condensing)

Standard: EN 60068 (IEC 68)

SuperStack 3 Baseline 10/100/1000 Switch (6 port)

3C16468

Physical

Width: 440 mm (17.3 in)
Depth: 247.5 mm (9.7 in)
Height: 43.6 mm (1.7 in)
Weight: 3.2 kg (7 lb)

Interfaces

6 RJ-45 Ethernet

LED Indicators

Power, network traffic, 1000 Mbps (full duplex), 100 Mbps (full, half duplex), 10 Mbps (full, half duplex)

Functional

ISO 8802-3, IEEE 802.3 (Ethernet), IEEE 802.3u (Fast Ethernet), IEEE 802.1d (bridging), IEEE 802.3x (flow control), IEEE 802.3ab (Gigabit Ethernet)

MAC addresses: 8,000

Electrical

Power inlet: IEC 320
AC line frequency: 50/60 Hz
Input voltage: 100-240 VAC

Current rating: 3A (max)

Maximum power consumption: 75W

Maximum power dissipation: 256 BTU/hr

Redundant power connector: Type 2

Safety

UL 1950, EN 60950, CSA 22.2 #950, IEC 60950

Emissions

EN 55022 Class A, FCC Part 15 Subpart B Class A, ICES-003 Class A, VCCI Class A, AS/NZS 3548 Class A, CNS 13438 Class A

Immunity

EN 55024

Environmental

Operating temperature: 0° to 50°C (32° to 122°F)

Humidity: 10 to 90% (non-condensing)

Standard: EN 60068 (IEC 68)

Warranty and Other Support Services

Lifetime limited warranty, for as long as the original Customer owns the product, or five years after product discontinuance, whichever occurs first. Includes fan and power supply.

After registering the product online, other free support services such as telephone support, fast hardware replacement, and software updates may also be available, depending on regional availability and retailer participation.

Ordering Information

SuperStack 3 Baseline Hub 12-port	3C16440A
SuperStack 3 Baseline Hub 24-port	3C16441A
SuperStack 3 Baseline Dual Speed Hub 12-port	3C16592B
SuperStack 3 Baseline Dual Speed Hub 24-port	3C16593B
SuperStack 3 Baseline 10/100 Switch 12-port	3C16464C
SuperStack 3 Baseline 10/100 Switch 24-port	3C16465C
SuperStack 3 Baseline 10/100 Switch 24-port plus 1000BASE-T	3C16467
SuperStack 3 Baseline 10/100/1000 Switch 6-port	3C16468

All Baseline hubs and switches include:

Plug and play simplicity

- No configuration required

Compact 1U high box

- Easy installation and upgrade

Rack mounting kit

- Operates free-standing or 19-inch rack-mounted

Limited lifetime warranty

- Includes all hardware, fans, and power supplies

Redundant power connector

- Peace of mind against power failures

3Com Corporation, Corporate Headquarters, 5400 Bayfront Plaza, P.O. Box 58145, Santa Clara, CA 95052-8145.

To learn more about 3Com solutions, visit www.3com.com. 3Com Corporation is publicly traded on Nasdaq under the symbol COMS.

Copyright © 2002 3Com Corporation. All rights reserved. 3Com and SuperStack are registered trademarks of 3Com Corporation. The 3Com logo is a trademark of 3Com Corporation. All other company and product names may be trademarks of their respective companies. All specifications are subject to change without notice.

