

PLEASE CHECK WWW.MOLEX.COM FOR LATEST PART INFORMATION

Part Number: [0357254310](#)
Status: **Active**
Description: Quick Disconnect, Female, for 20-22 AWG (0.52-0.33mm²), Metal Strip, Tab 6.35 by 0.81mm (.250 by .032"), Slip-On Type With Slot, Post Tin Plating

Documents:

[Drawing \(PDF\)](#) [RoHS Certificate of Compliance \(PDF\)](#)
[Product Specification PS-35703-001 \(PDF\)](#)

General

Product Family	Quick Disconnects
Series	35725
Crimp Quality Equipment	Yes
Product Name	N/A
Type	Quick Disconnect

Physical

Barrel Type	Open
Gender	Female
Glow-Wire Compliant	No
Insulation	None
Lock to Mating Part	Yes
Material - Metal	Brass
Orientation	Straight
Packaging Type	Reel
Polarized to Mating Part	No
Tab Thickness	0.81mm (.032")
Tab Width	6.35mm (.250")
Temperature Range - Operating	-25°C to +85°C
Wire Insulation Diameter	1.50-2.00mm (.059-.079") max.
Wire Size AWG	20, 22
Wire Size mm ²	0.33 - 0.52

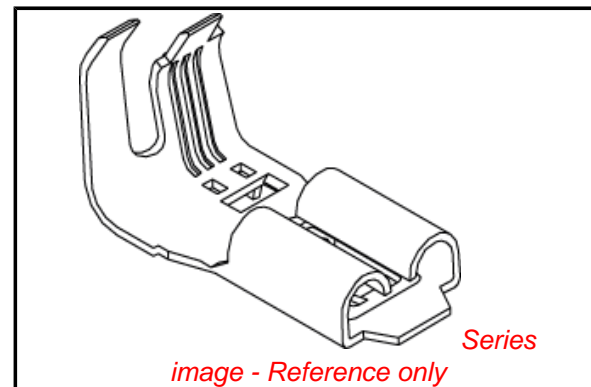
Electrical

Voltage - Maximum	Per Wire Specification
-------------------	------------------------

Material Info

Reference - Drawing Numbers

Product Specification	PS-35703-001
Sales Drawing	SD-35725-43*0



EU RoHS

ELV and RoHS Compliant
REACH SVHC
Contains SVHC: No
Halogen-Free Status

China RoHS



Need more information on product environmental compliance?

Email productcompliance@molex.com
 For a multiple part number RoHS Certificate of Compliance, [click here](#)

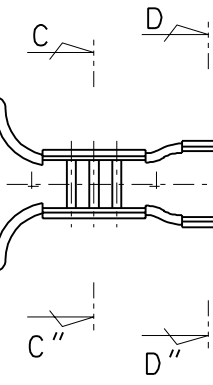
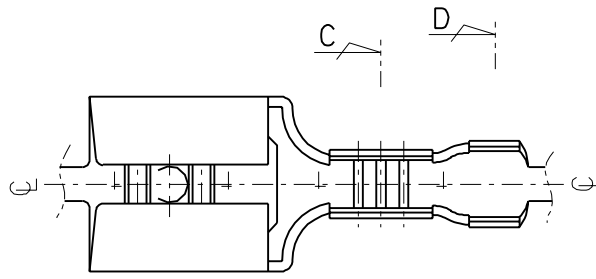
Please visit the [Contact Us](#) section for any non-product compliance questions.

Search Parts in this Series

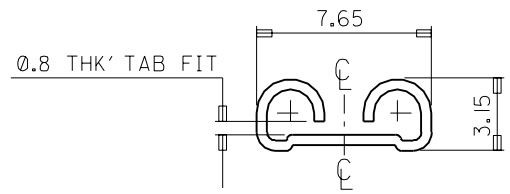
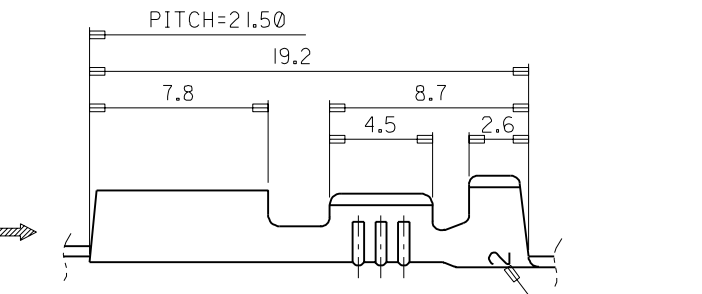
[35725Series](#)

Use With

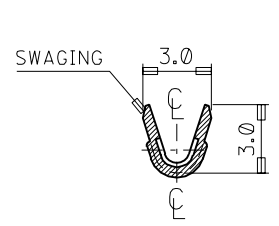
6.35mm (.250") Tab



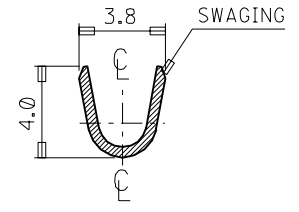
- NOTES
1. MATERIAL : BRASS 0.45THK'
 2. FINISH : 35725-4300 (UNPLATED)
35725-4310 (POST PLATED TIN)
 3. MATING TAB THICKNESS : 0.8mm
 4. RECOMMENDED LENGTH OF WIRE STRIP IS 6.0-6.8mm.



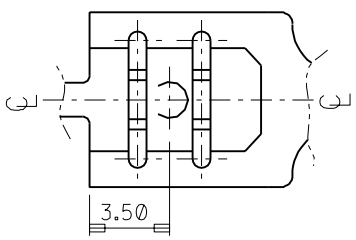
VIEW "A"



SEC' : C-C''



SEC' : D-D''



WIRE RANGE AWG #22-#20 (0.3-0.5 mm ²)		MATERIAL BRASS		molex MOLEX-KOREA CO.,LTD.	
INSULATION RANGE Ø 1.5-Ø 2.0		GENERAL TOLERANCE DIMENSION : ±0.3 ANGLE : °1°		DRAWN BY J.S.KANG	CHK'D BY
DIE FEED: 21.50		DIMENSION CLASSIFICATION ▽ : CRITICAL ▼ : MAJOR () : REFERENCE		APP'D BY	SCALE 5/1
APPLICATOR FEED: 21.50		A	REDRAWING	TITLE: .250 SLIP-ON RECEPTACLE (S)	
O'TY/ REEL OR PACK 5,000 O'TY/REEL		LTR	REVISION RECORD	ENG. NO.	SHEET 1 of 1
		REVISE ONLY ON CAD SYSTEM		ENG. NO. SD 35725-43*0	REV A