

Monolithic crystal filter

MQF45.0-3000/01



Application

- 2 pol filter
- i.f.- filter
- use in mobile and stationary transceivers

Limiting values

		Unit	Value
Center frequency	f_0	MHz	45.0
Insertion loss		dB	≤ 2.0
Pass band at 3.0 dB		kHz	$\pm \geq 15.00$
Ripple in pass band	$f_0 \pm 10.00$ kHz	dB	≤ 1.0
Stop band attenuation	$f_0 \pm 50$ kHz	dB	≥ 15
Alternate attenuation	$f_0 - 910$ kHz	dB	> 65
Spurious responses		dB	> 2 (typ. 5)

Terminating impedance Z

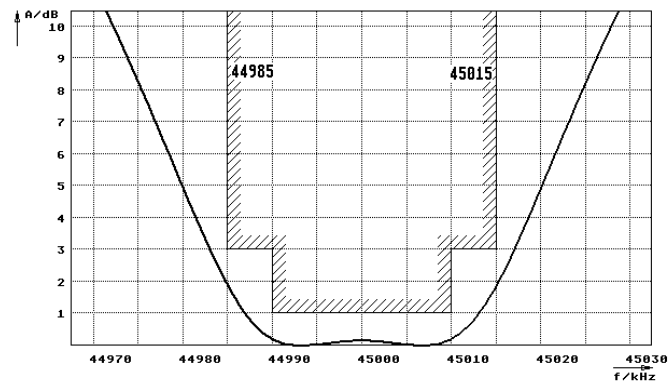
R1 C1	Ohm/pF	650 4
R2 C2	Ohm/pF	650 4

Operating temp. range

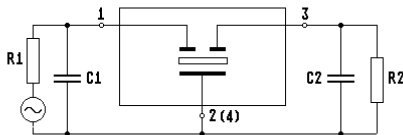
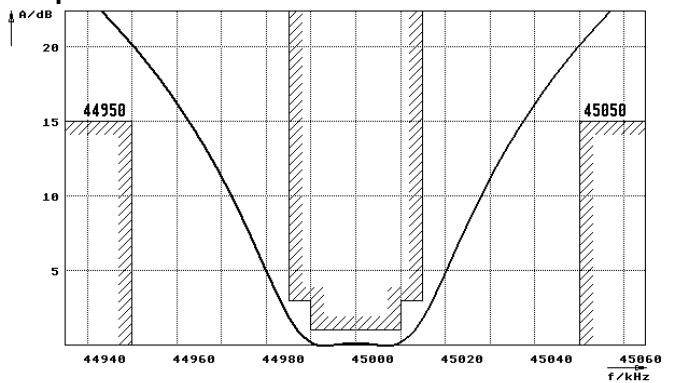
° C -40... +85

Characteristics MQF45.0-3000/01

Pass band



Stop band



- Pin connections:
- 1 Input
 - 2 Ground-Input
 - 3 Output
 - 4 Ground-Output

