

**PLEASE CHECK WWW.MOLEX.COM FOR LATEST PART INFORMATION**

**Part Number:** [0850840700](#)  
**Status:** **Active**  
**Description:** 4.00mm (0.157") SRC Housing, Female, 84 Pin Power, Nylon, Black

**Documents:**

[Drawing \(PDF\)](#) [RoHS Certificate of Compliance \(PDF\)](#)  
[Product Specification PS-85083-001 \(PDF\)](#)

**General**

Product Family	Crimp Housings
Series	85084
Comments	Polarized to mating part
Product Name	SRC

**Physical**

Circuits (maximum)	84
Color - Resin	Black
Gender	Female
Glow-Wire Compliant	No
Keying to Mating Part	None
Lock to Mating Part	Yes
Material - Resin	Nylon
Number of Rows	14
Packaging Type	Bag
Panel Mount	No
Pitch - Mating Interface (in)	0.012 In
Pitch - Mating Interface (mm)	0.30 mm
Polarized to Mating Part	Yes
Stackable	No
Temperature Range - Operating	-40°C to +125°C

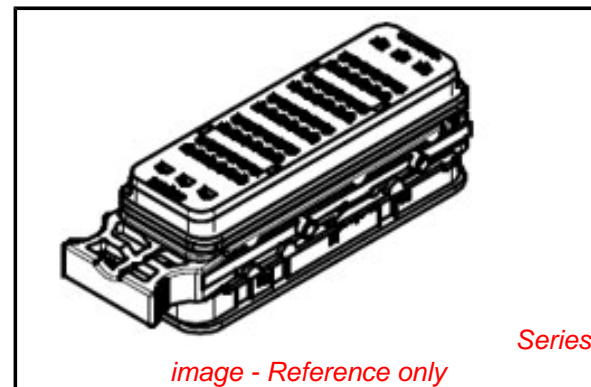
**Electrical**

Current - Maximum per Contact	40A
-------------------------------	-----

**Material Info**

**Reference - Drawing Numbers**

Product Specification	PS-85083-001
Sales Drawing	SD-85084-700



**EU RoHS**

**ELV and RoHS  
Compliant**  
**REACH SVHC  
Not Reviewed**  
**Halogen-Free  
Status  
Not Reviewed**

**China RoHS**



**Need more information on product  
environmental compliance?**

Email [productcompliance@molex.com](mailto:productcompliance@molex.com)  
 For a multiple part number RoHS Certificate of Compliance, [click here](#)

Please visit the [Contact Us](#) section for any non-product compliance questions.

**Search Parts in this Series**

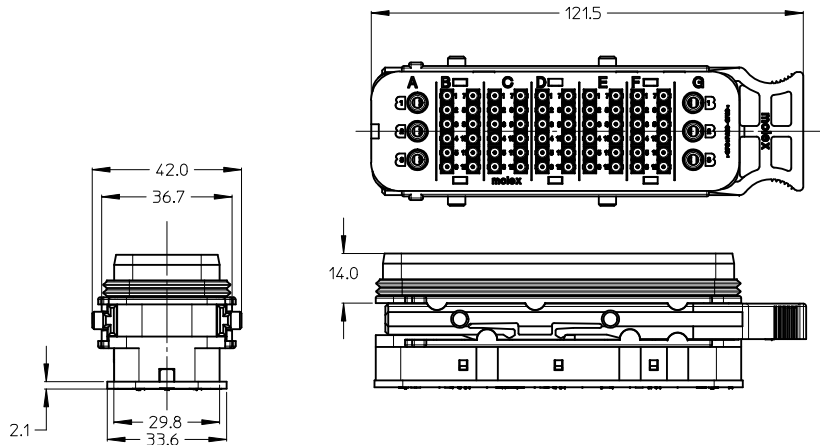
[85084Series](#)

**Mates With**

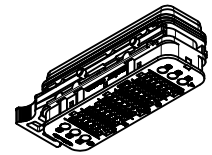
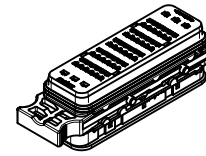
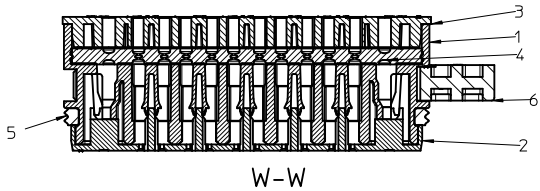
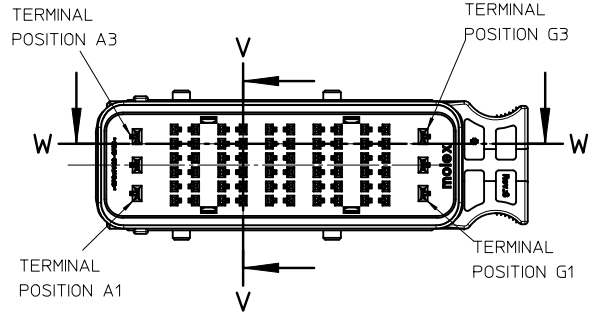
[85071 SRC Heavy Duty Connector](#)

**Use With**

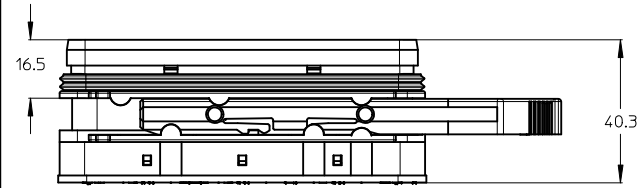
[33012 Female Terminals, Tin, AWG 14-22.](#)  
[19434 Female Terminal, Tin, AWG 8-12](#)



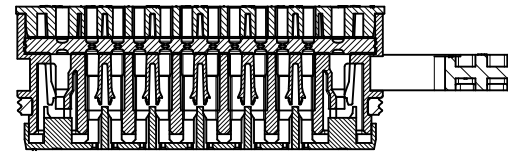
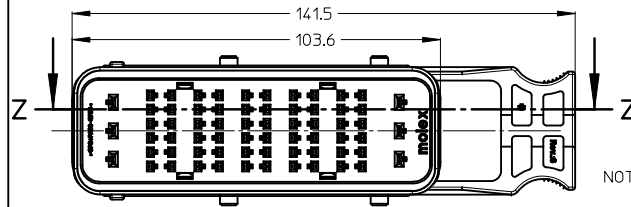
TPA IN FULL-LOCK POSITION



SCALE 1:2



TPA IN UNLOCK POSITION



NOTES:

1. SEE DRAWING SD-85083-300 FOR MATING PART
2. SEE DRAWING SD-33012-001 FOR TERMINALS TO BE USED IN CAVITIES B, C, D, E, F,
3. SEE DRAWING SD-19434-001 FOR TERMINALS TO BE USED IN CAVITIES A AND G (POWER CAVITIES)
4. OUTER-DIAMETER OF CONDUCTOR INSULATOR MUST LIE IN THE RANGE 1.7mm TO 2.69mm, FOR CAVITIES B, C, D, E, F,
5. OUTER-DIAMETER OF CONDUCTOR INSULATOR MUST LIE IN THE RANGE 3.9mm TO 4.85mm, FOR CAVITIES A AND G (POWER CAVITIES)
6. MATERIAL COMPLIANT TO RoHS DIRECTIVE 2002/95/EC
7. SHALL CONFORM TO PRODUCT SPECIFICATION PS-85083-001

NO.	PART NAME	QTY	MATERIAL	COLOR
6	SLIDING LATCH	1	SPS/PA66 GF20	BLACK
5	FEMALE FRONT SEAL	1	LSR 30 Durom. A	RED
4	FEMALE BACK SEAL	1	LSR 30 Durom. A	BLACK
3	FEMALE REAR COVER	1	SPS/PA66 GF20	BLACK
2	FEMALE FRONT COVER (TPA)	1	SPS/PA66 GF20	BLACK
1	FEMALE HOUSING	1	SPS/PA66 GF20	BLACK

ENTER DESCRIPTION  
 EC NO: MG2010-0037  
 DRW: NAPHIL 2009/12/04  
 CHK: RSILLER 2009/12/04  
 APPR: AVOGT 2009/12/07

QUALITY SYMBOLS  
 ▽=0  
 ▽=0

GENERAL TOLERANCES (UNLESS SPECIFIED)

	mm	INCH
4 PLACES	± ---	± ---
3 PLACES	± ---	± ---
2 PLACES	± 0.05	± ---
1 PLACE	± 0.10	± ---
ANGULAR ± .5 °		

DRAFT WHERE APPLICABLE  
 MUST REMAIN  
 WITHIN DIMENSIONS

DIMENSION STYLE  
**MM ONLY**

DRAWN BY: TVOGT  
 DATE: 2009/03/26

CHECKED BY: RSILLER  
 DATE: 2009/03/30

APPROVED BY: AVOGT  
 DATE: 2009/03/31

MATERIAL NO.  
**85084-0700**

SCALE  
**1:1**

DESIGN UNITS  
**METRIC**

FIRST ANGLE PROJECTION

TITLE  
**SRC 60+6 CONTACT  
 FEMALE ASSEMBLY  
 A, G POWER CAVITIES**

**molex** MOLEX INCORPORATED

DOCUMENT NO.  
**SD-85084-700**

SHEET NO.  
**1 OF 1**

THIS DRAWING CONTAINS INFORMATION THAT IS PROPRIETARY TO MOLEX INCORPORATED AND SHOULD NOT BE USED WITHOUT WRITTEN PERMISSION