



# TAI-SAW TECHNOLOGY CO., LTD.

No. 3, Industrial 2nd Rd., Ping-Chen Industrial District,  
Taoyuan, 324, Taiwan, R.O.C.

TEL: 886-3-4690038 FAX: 886-3-4697532

E-mail: [tstsales@mail.taisaw.com](mailto:tstsales@mail.taisaw.com) Web: [www.taisaw.com](http://www.taisaw.com)

## Approval Sheet For Product Specification

Issued Date:

Product Name: SAW Filter 428.835MHz SMD 3.8×3.8mm

TST Parts No.: TA0593A

Customer Parts No.: \_\_\_\_\_

Company: _____
Division: _____
Approved by : _____
Date: _____

Checked by: \_\_\_\_\_ Asin Lin

Approval by: \_\_\_\_\_ Francis Chen

Date: \_\_\_\_\_ 2006/09/13



# TAI-SAW TECHNOLOGY CO., LTD.

No. 3, Industrial 2nd Rd., Ping-Chen Industrial District,  
Taoyuan, 324, Taiwan, R.O.C.

TEL: 886-3-4690038 FAX: 886-3-4697532

E-mail: [tstsales@mail.taisaw.com](mailto:tstsales@mail.taisaw.com) Web: [www.taisaw.com](http://www.taisaw.com)

## SAW Filter 428.835 MHz

MODEL NO.: TA0593A

REV. NO.:1

### A. MAXIMUM RATING:

1. Input Power Level: 10 dB<sub>m</sub>
2. DC voltage: 3 V
3. Operating Temperature: +15°C to +35°C
4. Storage Temperature: -40°C to +85°C

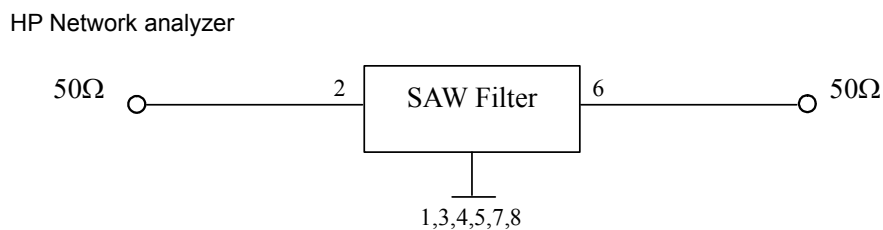
RoHS Compliant  
Lead free  
Lead-free soldering

### B. CHARACTERISTICS:

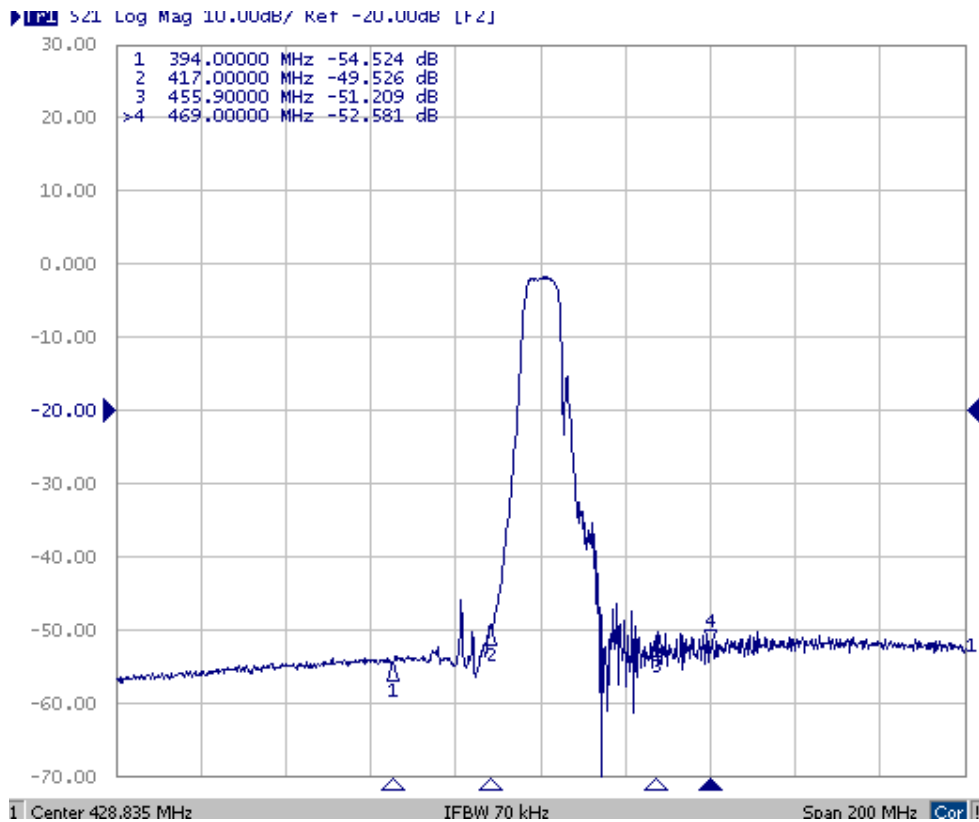
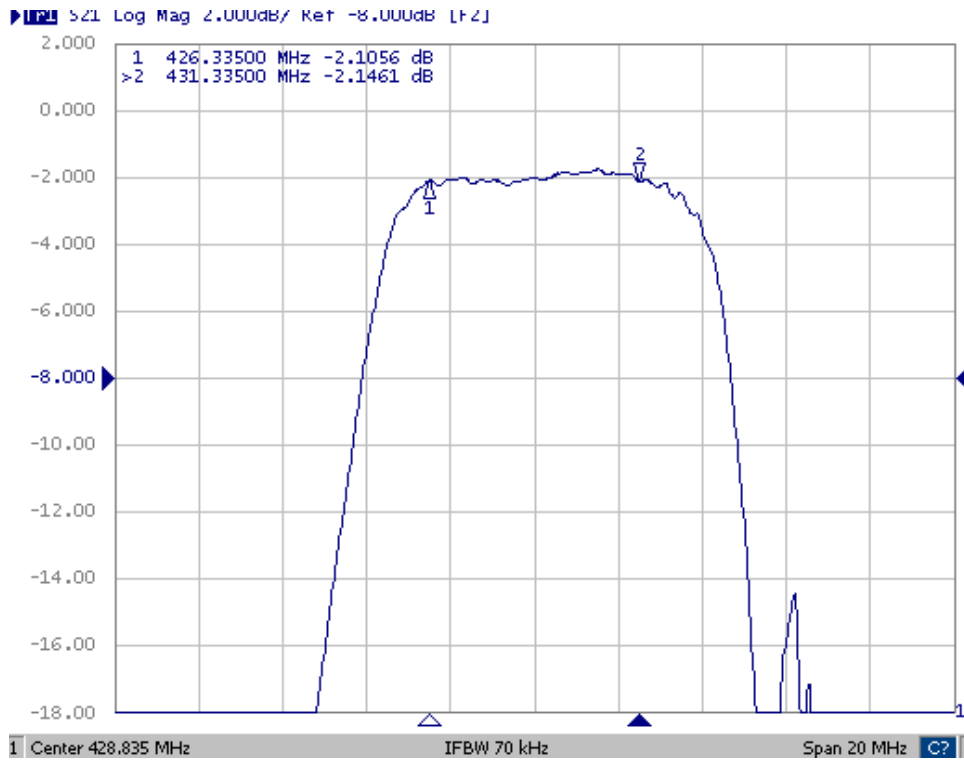
Item		Min.	Typical	Max.
Center frequency	F <sub>c</sub> MHz	-	428.835	-
Insertion loss	426.335 ~ 431.335 MHz IL	-	2.2	3.6
Amplitude ripple	426.335 ~ 431.335 MHz	-	0.7	2.1
VSWR	426.335 ~ 431.335 MHz	-	1.4	2.1
Attenuation (Reference level from 0 dB)				
1 ~ 379.0	MHz	40	50	-
379.0 ~ 394.0	MHz	31	50	-
394.0 ~ 417.0	MHz	10	35	-
455.9 ~ 469.0	MHz	37	50	-
469.0 ~ 550.0	MHz	40	50	-
Temperature coefficient of frequency	ppm/k	-	-36	-
Source impedance	Z <sub>s</sub> Ω	-	50	-
Load impedance	Z <sub>L</sub> Ω	-	50	-

Note1. No matching network required for operation at 50Ω

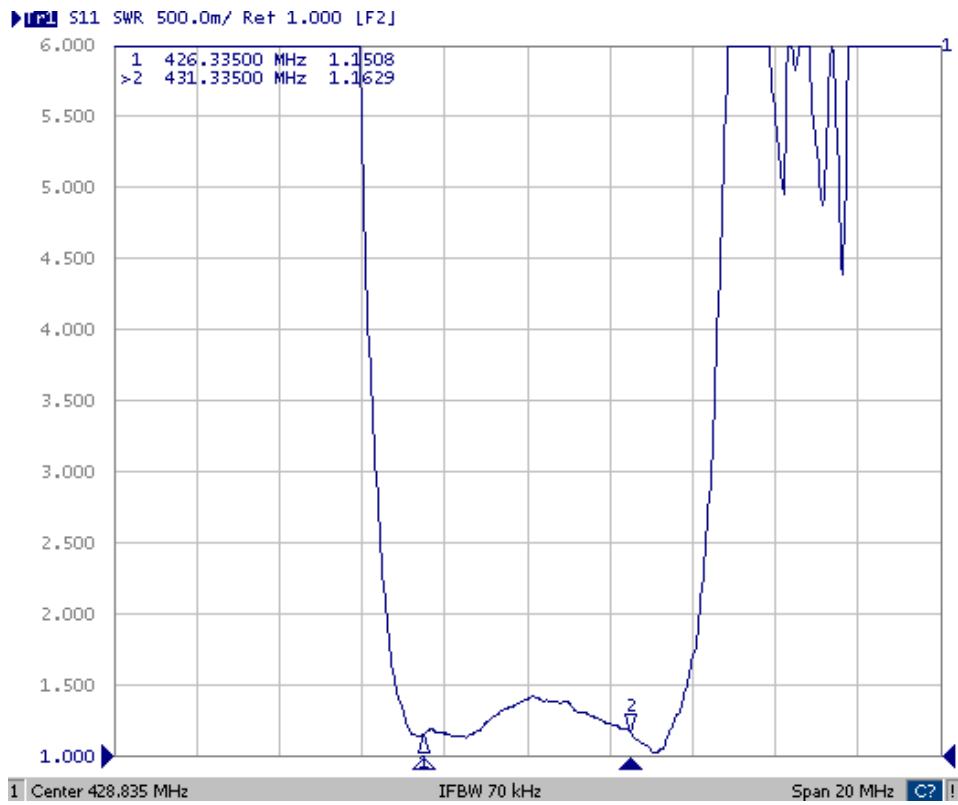
### C. MEASUREMENT CIRCUIT:



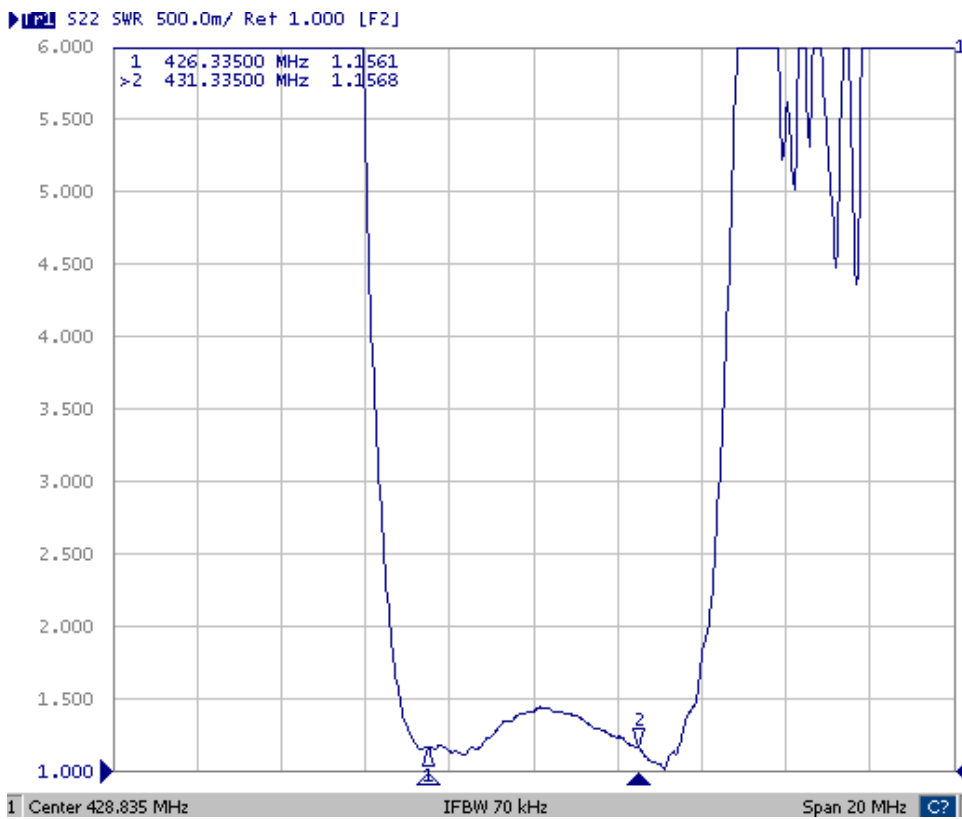
### D. TRANSFER FUNCTION :



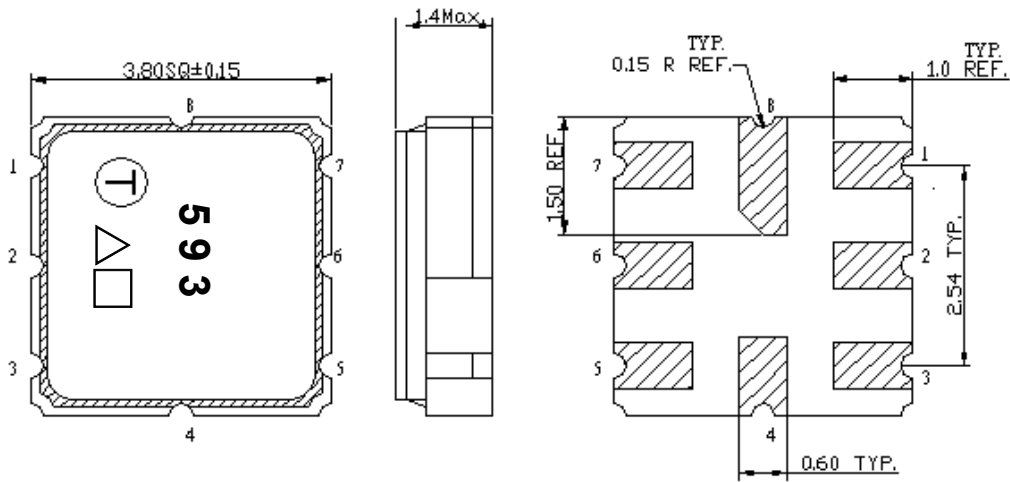
# VSWR S11



# VSWR S22



### E.OUTLINE DRAWING:

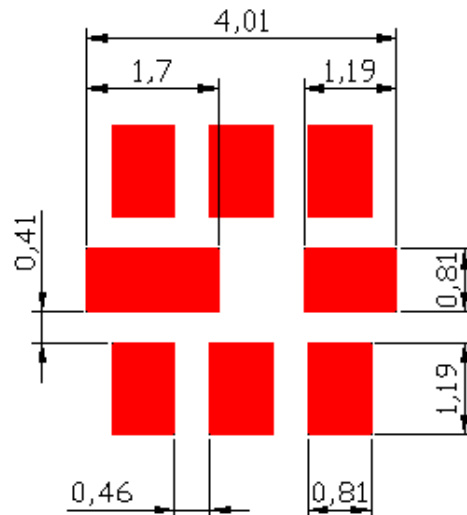


2 : Input  
 6: Output  
 1,3,4,5,7,8 Ground  
 △:Year Code  
 □: Date Code(Follow the table provided by planner each year.)  
 Unit: mm

△ Product Year Code

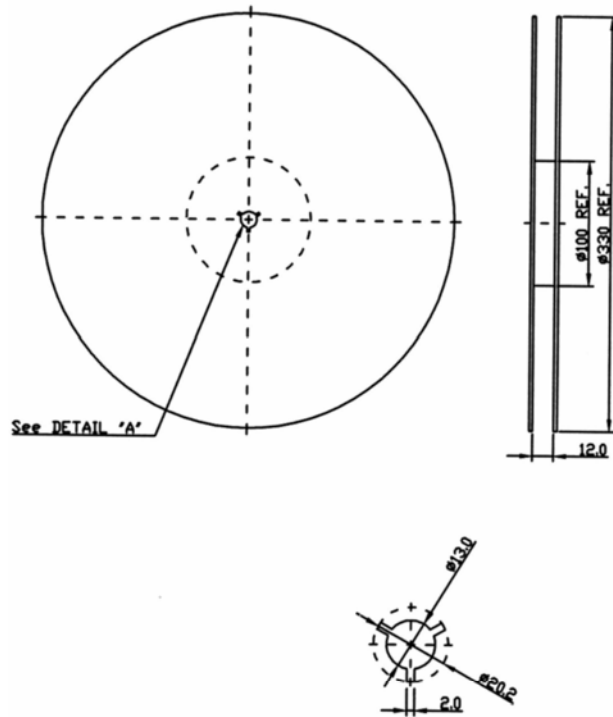
Year	2005 2007 2009	2006 2008 2010
Product Code	A	a

### F.PCB FOOTPRINT:

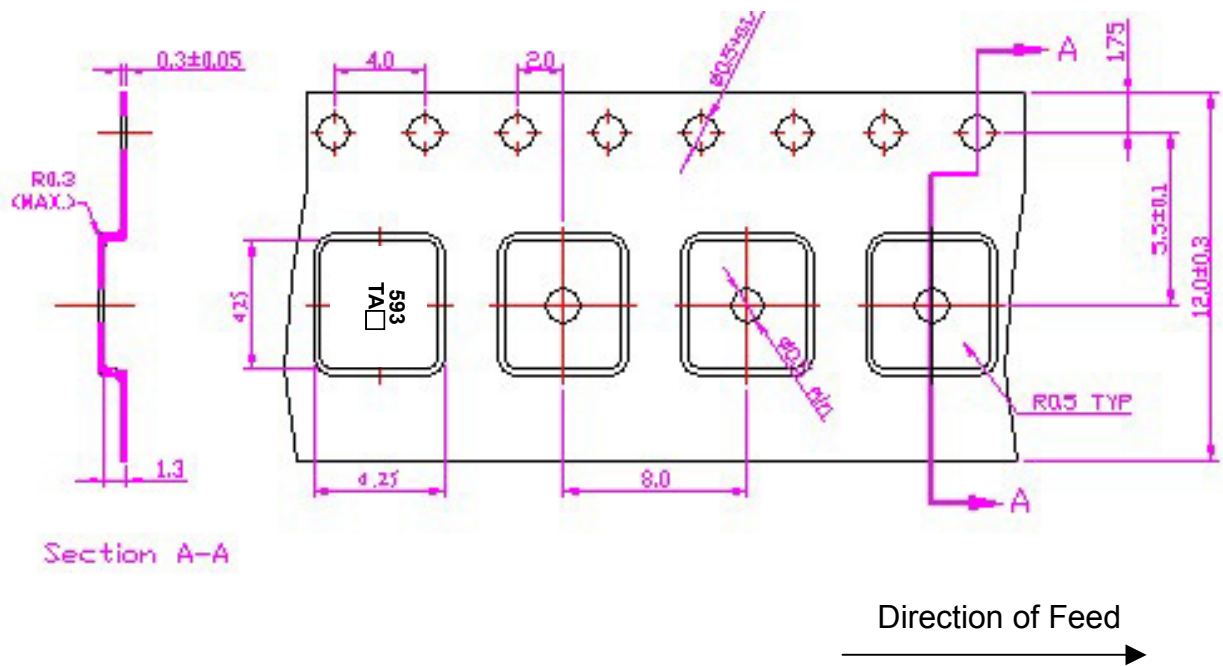


## G. PACKING:

### 1. REEL DIMENSION



### 2. TAPE DIMENSION



## H. REFLOW PROFILE

