

PLEASE CHECK WWW.MOLEX.COM FOR LATEST PART INFORMATION

Part Number: [0357660310](#)
Status: **Active**
Description: .118mm (.004") Tab Slip-On Wire-to-Wire Terminal, Female, 12-14 AWG, PreTin-Plated

Documents:

[Drawing \(PDF\)](#) [RoHS Certificate of Compliance \(PDF\)](#)
[Product Specification PS-35546-001 \(PDF\)](#)

General

Product Family	Crimp Terminals
Series	35766
Crimp Quality Equipment	Yes
Product Name	N/A

Physical

Gender	Male
Material - Metal	Brass
Material - Plating Mating	Tin
Material - Plating Termination	Tin
Packaging Type	Reel
Plating min: Mating (µin)	40
Plating min: Mating (µm)	1
Plating min: Termination (µin)	40
Plating min: Termination (µm)	1
Termination Interface: Style	Crimp or Compression
Wire Insulation Diameter	5.00mm (.197") max.
Wire Size AWG	12, 14
Wire Size mm ²	N/A

Material Info

Reference - Drawing Numbers

Product Specification	PS-35546-001
Sales Drawing	SD-35766-0*10

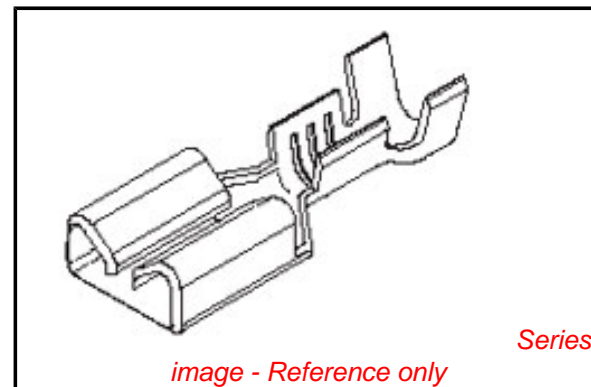


image - Reference only

EU RoHS

**ELV and RoHS
Compliant**

REACH SVHC

Contains SVHC: No

Halogen-Free

Status

Halogen-Free

China RoHS



**Need more information on product
environmental compliance?**

Email productcompliance@molex.com
 For a multiple part number RoHS Certificate of Compliance, [click here](#)

Please visit the [Contact Us](#) section for any non-product compliance questions.

Search Parts in this Series
[35766Series](#)

DO NOT SCALE DRAWING DIMENSION IN METRIC

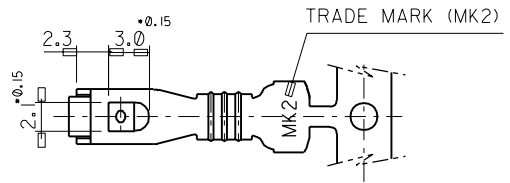
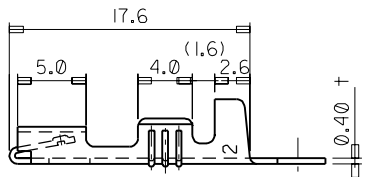
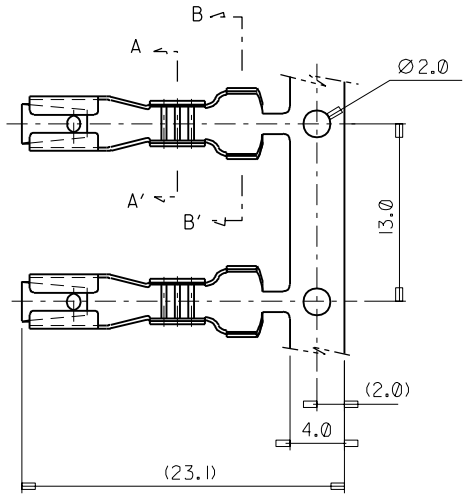
PROJECT NO.

SIMILAR ITEM

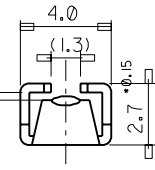
EDP NO.

ENG. NO SD 35766-0*10

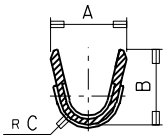
(F) →



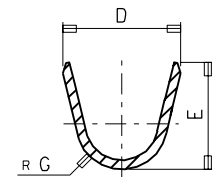
TO BE USED ON Ø.6 TAB



VIEW: F



SECTION: A-A'



SECTION: B-B'

NOTES

- 1. MATERIAL: BRASS (C2680T)
- 2. FINISH: PRE-TIN PLATED

35766-0310	#14-#12	3.8	4.2	1.6	5.2	4.9	2.0
35766-0210	#18-#16	3.3	3.3	1.25	5.2	4.9	2.0
35766-0110	#20-#18	2.9	2.6	0.9	3.9	3.8	1.6
PART NO.	WIRE RANGE	A	B	C	D	E	G

ASS'Y PART		QTY/REEL OR PACK	SURFACE AREA	MATERIAL	SEE NOTES	WIRE RANGE	GENERAL TOLERANCES	MOLEX-KOREA CO.,LTD.
DESCRIPTION	ENG.NO.	3,000	—//— MM ²	DIMENSION CLASSIFICATION		AWG: #14-#12	DIM. ANGLE: *0.25	
—//—	—//—	DIE NO. —//—	LAYOUT NO. —//—	■ : CRITICAL ☒ : MAJOR □ : MINOR () : REFERENCE		INSULATION RANGE	TITLE: .118 SLIP ON RECEPTACLE	
B REVISION	94-003	CHOI	94.4.19	WIRE CRIMP WIDTH	INS. CRIMP WIDTH	—//—	ENG.NO. SD 35766 - 0*10	
A CAD REDRAWING	CHOI	94.4.15		DRAWN BY	CHK'D BY		REV B	
LTR REVISION RECORD	ECN	DR/CHK	DATE	APP'D BY	SCALE			
		DIE FEED	APPL FEED	IBDW				
		13.0	13.0	—//—	3/1 (5/1)			