

PLEASE CHECK WWW.MOLEX.COM FOR LATEST PART INFORMATION

Part Number: **0197500004**
Status: **Active**
Description: ValuKrimp™ Butt Splice for 10-12 AWG

Documents:

[Drawing \(PDF\)](#) [RoHS Certificate of Compliance \(PDF\)](#)

General

Product Family	Splices
Series	<u>19750</u>
Crimp Quality Equipment	Yes
Mil-Spec	N/A
Product Name	VersaKrimp™

Physical

Barrel Type	Closed
Color - Resin	Natural
Insulation	PVC
Material - Resin	PVC
Packaging Type	Bag
Temperature Range - Operating	-40°C to +105°C
Wire Insulation Diameter	5.84mm (.230") max
Wire Size AWG	10, 12

Electrical

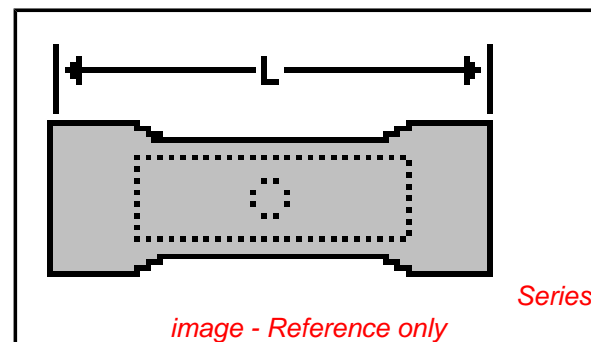
Voltage - Maximum	600V
-------------------	------

Material Info

Old Part Number	VALUKRIMP C BUTT
-----------------	------------------

Reference - Drawing Numbers

Sales Drawing	SD-19750-001
---------------	--------------



EU RoHS

**ELV and RoHS
Compliant**

REACH SVHC

Not Reviewed

Halogen-Free

Status

Not Reviewed

**Need more information on product
environmental compliance?**

Email productcompliance@molex.com
 For a multiple part number RoHS Certificate of
 Compliance, [click here](#)

Please visit the [Contact Us](#) section for any
 non-product compliance questions.

China RoHS



Search Parts in this Series

19750Series

Application Tooling | FAQ

*Tooling specifications and manuals are
 found by selecting the products below.
 Crimp Height Specifications are then
 contained in the Application Tooling
 Specification document.*

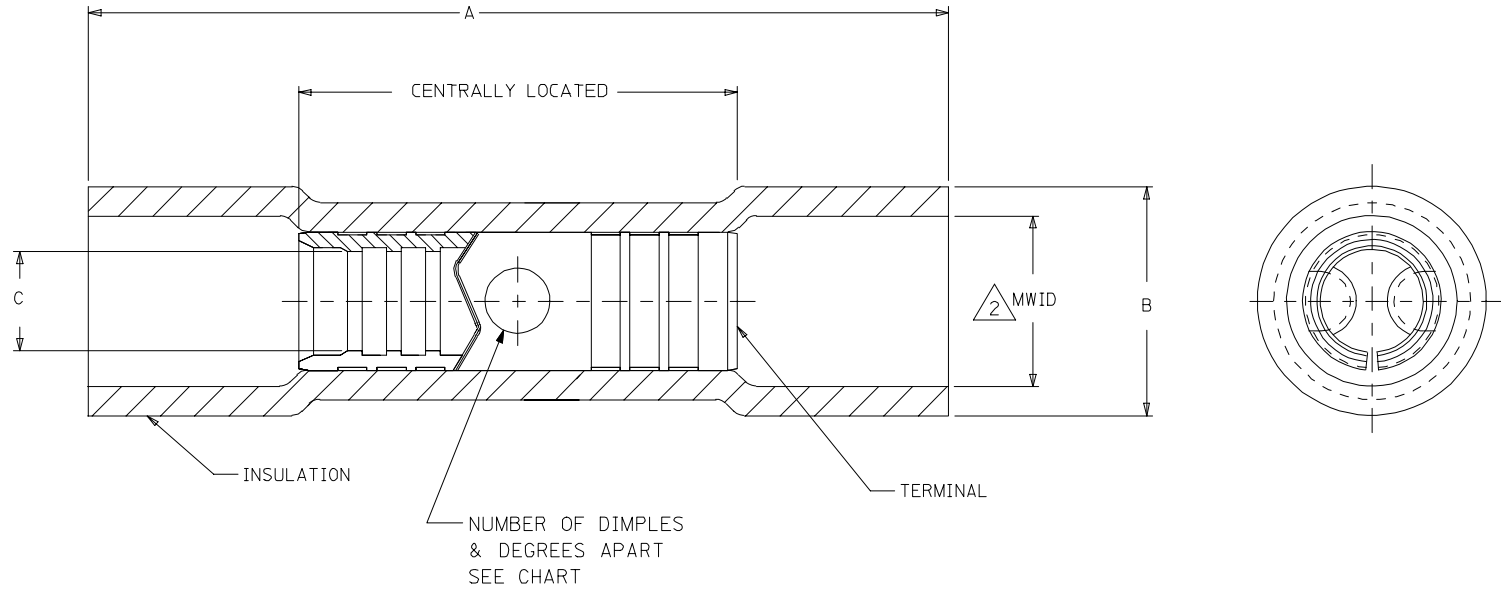
Global

Description

Product #

Hand Crimp Tool for	<u>0640017500</u>
ValuKrimp™, Butt	
Splice 10-12 AWG	

MATERIAL NUMBER	ENGINEERING NUMBER	AWG	A MAX	B REF	$\triangle 2$ MWID	C MIN	NUMBER OF DIMPLES
197500003	19750-0003	22-18	.883/22.42	.193/4.90	.133/3.37	.061/1.55	2 DIMPLES @180° APART
197500001	19750-0001	16-14	.885/24.48	.235/5.97	.175/4.44	.098/2.49	2 DIMPLES @180° APART
197500004	19750-0004	12-10	.984/25.00	.290/7.37	.230/5.84	.148/3.76	3 DIMPLES @120° APART



NOTES:
 1. MATERIAL:
 INSULATION: PVC
 TERMINAL: TIN PRE-PLATED BRASS
 $\triangle 2$. MWID = MAXIMUM WIRE INSULATION DIAMETER

ADDED PART NO.: EC NO: ETC2005-0155 DRAWN: JLOMASTRO 2005/03/02 CHK'D: RDEROSS 2005/03/02 APPR: RDEROSS 2005/03/02	QUALITY SYMBOLS $\blacktriangledown = 0$ $\nabla = 0$	GENERAL TOLERANCES (UNLESS SPECIFIED)		DIMENSION STYLE	SCALE	DESIGN UNITS	THIRD ANGLE PROJECTION		
			mm	INCH	IN/MM	8:1	INCH		
		4 PLACES	± ---	± ---	DRAWN BY	DATE	TITLE		
		3 PLACES	± ---	± .010	JLOMASTRO	05/03/02	VALUKRIMP BUTT SPLICE		
2 PLACES	± 0.25	± .01	CHECKED BY	DATE					
1 PLACE	± 0.3	± ---	RDEROSS	05/03/02					
ANGULAR ±1/2°				APPROVED BY	DATE	MOLEX INCORPORATED			
		DRAFT WHERE APPLICABLE MUST REMAIN WITHIN DIMENSIONS		RDEROSS	05/03/03				
				MATERIAL NO.	DOCUMENT NO.	SHEET NO.			
				SEE CHART	SD-19750-001	1 OF 1			
				SIZE B	THIS DRAWING CONTAINS INFORMATION THAT IS PROPRIETARY TO MOLEX INCORPORATED AND SHOULD NOT BE USED WITHOUT WRITTEN PERMISSION				