



Data Sheet



Product Category: RF SAW Filter

Part Number	Package	Application	Last Modified
802-RF448.0M-A	3.0 x 3.0 SMD	Wireless Communication	Oct 01 2007

TYPE :
448.0 MHz RF SAW Filter

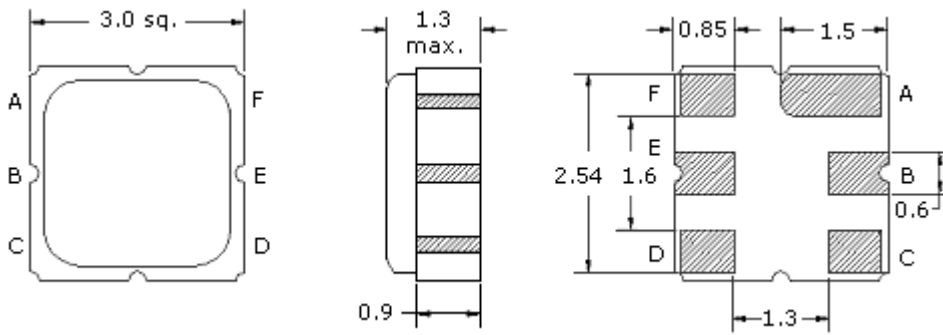


PART NUMBER :
802-RF448.0M-A

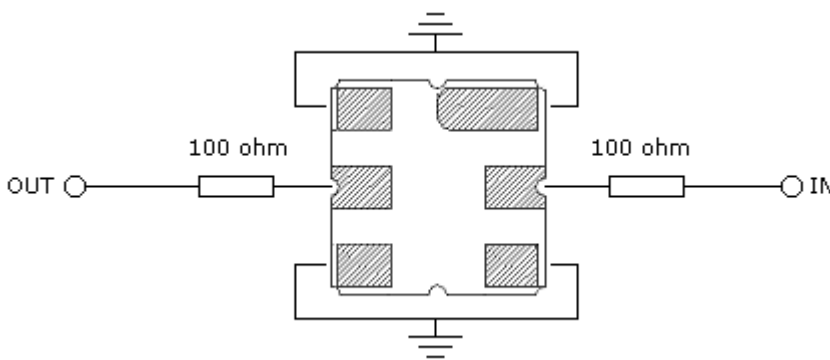
OPERATING CONDITIONS / ELECTRICAL CHARACTERISTICS

PARAMETERS	Condition	Minimum	Typical	Maximum	Units
Center Frequency (Fo)	-	-	448.0	-	MHz
Insertion Loss	446.0 ~ 450.0 MHz	-	2.6	3.2	dB
Ripple	446.0 ~ 450.0 MHz	-	0.5	1.5	dB
Stopband Attenuation	Fo -200.0 ~ Fo -60.0 MHz	50.0	55.0	-	dB
	Fo +42.8 ~ Fo +200.0 MHz	50.0	55.0	-	
Terminating Impedance	-	-	150/0	-	ohm/pF

* Custom SAW RF Filters available. Contact Oscilent for assistance.

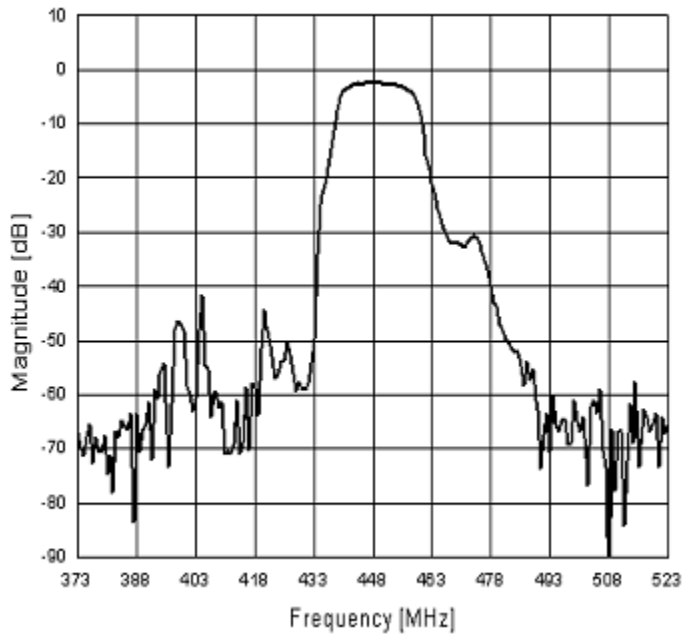


Pin Layout	
A	Ground
B	Output
C	Ground
D	Ground
E	Input
F	Ground



Test Fixture

Frequency Reponse



Oscilent Corporation - CALL **949.252.0522**
18195 East McDermott Street . Building D . Irvine . CA 92614 . USA
Fax: 949.252.0599 . E-Mail: Sales@Oscilent.com

Part No.: 802-RF448.0M-A