

**PLEASE CHECK WWW.MOLEX.COM FOR LATEST PART INFORMATION**

**Part Number:** **0359410200**  
**Status:** **Active**  
**Description:** 4.75mm (.187") Tab Housing, 15.20mm (.598") Pitch, Positive Latch, for Drain Motor, 2 Circuits, UL94V-2, White

**Documents:**

[3D Model](#) [Product Specification PS-35941-001 \(PDF\)](#)  
[Drawing \(PDF\)](#) [RoHS Certificate of Compliance \(PDF\)](#)

**General**

Product Family Crimp Housings  
Series [35941](#)  
Product Name N/A

**Physical**

Circuits (maximum) 2  
Color - Resin Natural  
Gender Female  
Glow-Wire Compliant No  
Lock to Mating Part Yes  
Material - Resin Polyester Alloy  
Number of Rows 1  
Packaging Type Bag  
Panel Mount No  
Pitch - Mating Interface (in) 0.598 In  
Pitch - Mating Interface (mm) 15.20 mm  
Polarized to Mating Part Yes  
Temperature Range - Operating -40°C to +105°C

**Electrical**

Current - Maximum per Contact 10A

**Material Info**

**Reference - Drawing Numbers**

Product Specification PS-35941-001  
Sales Drawing SD-35941-001

**EU RoHS**

**ELV and RoHS Compliant**

**REACH SVHC**

Not Reviewed

**Halogen-Free**

**Status**

**Not Reviewed**

**China RoHS**



**Need more information on product environmental compliance?**

Email [productcompliance@molex.com](mailto:productcompliance@molex.com)  
For a multiple part number RoHS Certificate of Compliance, [click here](#)

Please visit the [Contact Us](#) section for any non-product compliance questions.

**Search Parts in this Series**

[35941Series](#)

**Mates With**

[Drain Motor Interface](#)

**Use With**

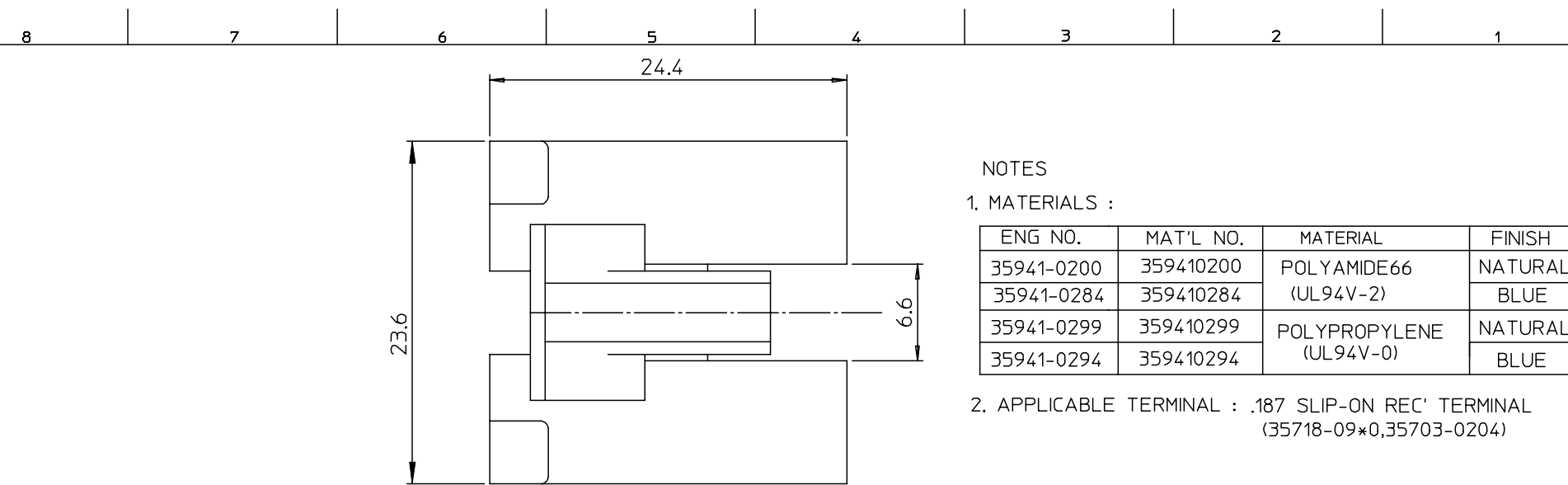
[35703-0204 Terminal](#), [35718-0900 Terminal](#), [35718-0910 Terminal](#)

DWG. NO.  
SD-35941-001

SIMILAR ITEM

PROJECT NO.

DO NOT SCALE DRAWING  
DIMENSION IN METRIC

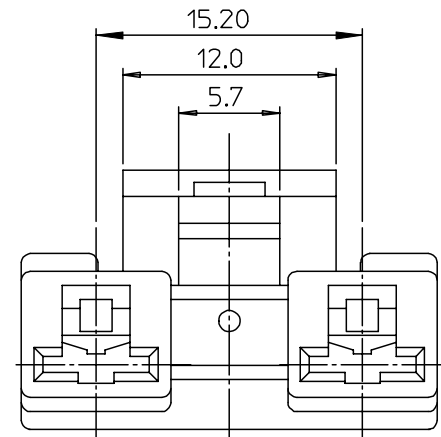
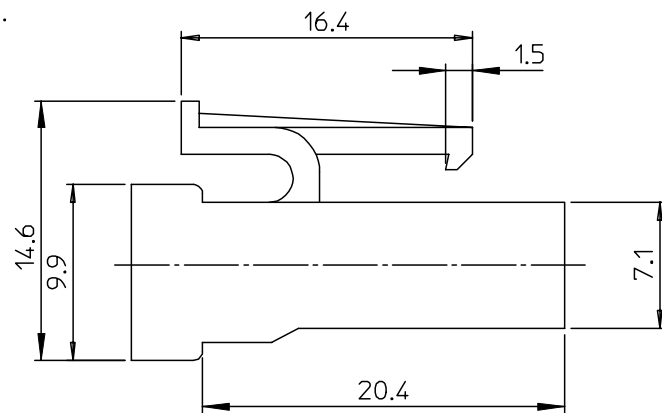
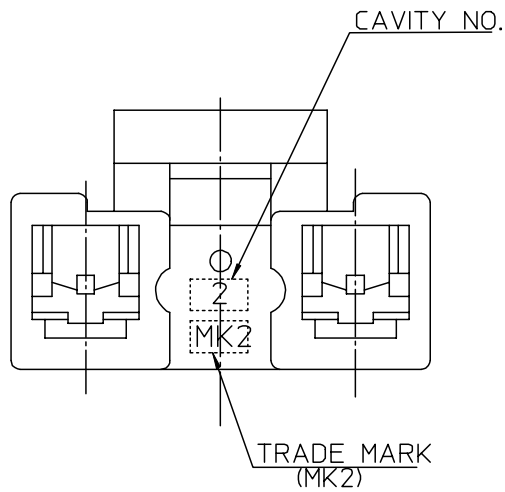


NOTES

1. MATERIALS :

ENG NO.	MAT'L NO.	MATERIAL	FINISH
35941-0200	359410200	POLYAMIDE66 (UL94V-2)	NATURAL
35941-0284	359410284		BLUE
35941-0299	359410299	POLYPROPYLENE (UL94V-0)	NATURAL
35941-0294	359410294		BLUE

2. APPLICABLE TERMINAL : .187 SLIP-ON REC' TERMINAL  
(35718-09\*0,35703-0204)



REVISED ECN NO. KOR2004-0073 DRWN: C.B.CHIN 04/05/14 CHK: W.Y.YANG APPR: C.W.LEE	QUALITY SYMBOLS MAJOR $\blacktriangledown = 0$ CRITICAL $\nabla = 0$	GENERAL TOLERANCES: (UNLESS SPECIFIED)		SCALE 4:1	DESIGN UNITS <input checked="" type="checkbox"/> mm <input type="checkbox"/> INCH	THIRD ANGLE PROJECTION <input checked="" type="checkbox"/> THIRD ANGLE	DIMENSIONS: <input type="checkbox"/> mm <input type="checkbox"/> INCH <input checked="" type="checkbox"/> mm ONLY		SHT	REV
		4 PLACES	$\pm 0.$	$\pm -$	DRAWN BY & DATE W.Y.YNAG 99/11/14		TITLE: .187 HOUSING-2P (FOR DRAIN MOTOR)			
		3 PLACES	$\pm 0.$	$\pm -$	CHECKED BY & DATE B.K.CHOI 99/11/14		MOLEX INCORPORATED MATERIAL NO. SEE NOTES   DRAWING NO. SD-35941-001   SHEET NO. 1 OF 1			
		2 PLACES	$\pm 0.30$	$\pm -$	APPROVED BY & DATE C.W.LEE 99/11/14					
1 PLACE	$\pm 0.30$	$\pm -$	ANGULAR: $\pm 1^\circ$		CAD FILENAME S9410200.MI		DRAFT WHERE APPLICABLE MUST REMAIN WITHIN DIMENSIONS			
B	REV	DESCRIPTION		THIS DRAWING CONTAINS INFORMATION THAT IS PROPRIETARY TO MOLEX INCORPORATED AND SHOULD NOT BE USED WITHOUT WRITTEN PERMISSION.		KOREA		MX-A3		