

**PLEASE CHECK WWW.MOLEX.COM FOR LATEST PART INFORMATION**

**Part Number:** [1300990147](#)  
**Status:** **Active**  
**Overview:** [brad wire mesh grips](#)  
**Description:** Deluxe Cord Grips 1/4" NPT Gasket

**Documents:**

[Drawing \(PDF\)](#) [RoHS Certificate of Compliance \(PDF\)](#)

**General**

Product Family	Cable Grips
Series	<a href="#">130099</a>
Eye Type	N/A
Insulated	No
O-Ring	No
Overview	<a href="#">brad wire mesh grips</a>
Product Name	MAX-LOC®
Type	Gaskets
Use With	<a href="#">130097</a> 1/4" NPT Tread Size Strain Relief
Woodhead	Yes

**Physical**

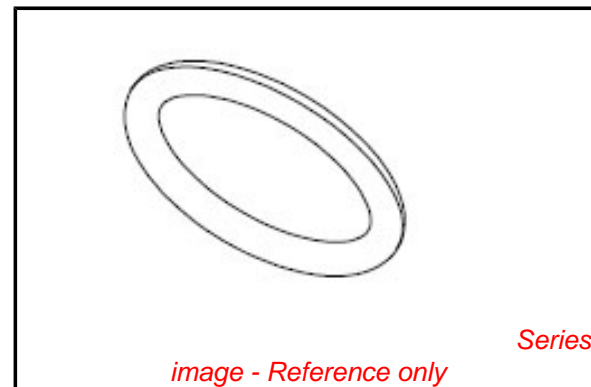
Approximate Break Strength	N/A
Bale Length	N/A
Body Style	N/A
Cable Diameter	N/A
Color - Grommet	N/A
Gender	N/A
Material - Body	N/A
Material - Grip	Nylon
Mesh Length	N/A
Number of Holes	N/A
Strain Relief Force	35 lbs
Thread Size	1/4" NPT

**Material Info**

Old Part Number	5609
-----------------	------

**Reference - Drawing Numbers**

Sales Drawing	SD-130099-147
---------------	---------------



**EU RoHS**

**ELV and RoHS  
Compliant**  
**REACH SVHC  
Not Reviewed**  
**Halogen-Free  
Status  
Not Reviewed**

**China RoHS**



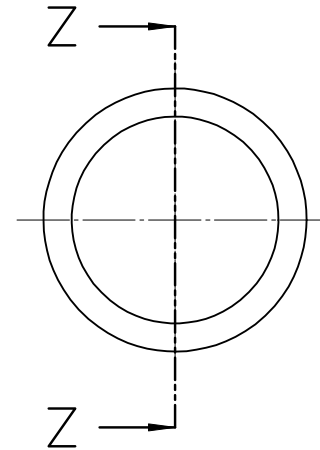
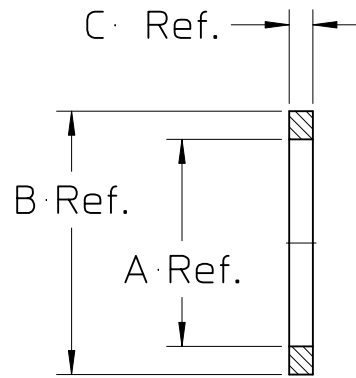
**Need more information on product  
environmental compliance?**

Email [productcompliance@molex.com](mailto:productcompliance@molex.com)  
 For a multiple part number RoHS Certificate of  
 Compliance, [click here](#)

Please visit the [Contact Us](#) section for any  
 non-product compliance questions.

**Search Parts in this Series**  
[130099Series](#)

MATERIAL NUMBER	OLD PART NUMBER	A	B	C	N.P.T. SIZE REF.	MATERIAL	FINISH
1300990147	5609	.540	.687	.062	1/4"	Neoprene	Black
1300990148	5610	.687	.937	.062	3/8"	Neoprene	Black
1300990149	5611	.843	1.093	.078	1/2"	Neoprene	Black
1300990150	5612	1.062	1.312	.078	3/4"	Neoprene	Black
1300990151	5613	1.312	1.687	.078	1"	Neoprene	Black
1300990152	5614	1.671	2.046	.078	1-1/4"	Neoprene	Black



SECTION Z-Z

ENTER DESCRIPTION EC NO: WNA2009-0773 DRWN: NKUMAR01 2009/05/25 CHKD: APPR: JFMURPHY 2009/07/08 DESCRIPTION	QUALITY SYMBOLS	GENERAL TOLERANCES (UNLESS SPECIFIED)		DIMENSION STYLE IN/MM		SCALE 2:1	DESIGN UNITS INCH	THIRD ANGLE PROJECTION		
	▼=0 ∇=0		mm	INCH	DRAWN BY NKUMAR01	DATE 25/05/09	TITLE GASKET SEAL - 1/4 MAX-LOC SEE00-5089			
		4 PLACES	± ---	± ---	CHECKED BY BWOODMAN	DATE 25/05/09				
		3 PLACES	± ---	± ---	APPROVED BY JFMURPHY		DATE 25/05/09		MOLEX INCORPORATED	
		2 PLACES	± ---	± 0.010	MATERIAL NO. SEE CHART		DOCUMENT NO. SD-130099-147			
	1 PLACE	± 0.3	± ---	ANGULAR ± 1/2°						
A	REV	DRAFT WHERE APPLICABLE MUST REMAIN WITHIN DIMENSIONS		THIS DRAWING CONTAINS INFORMATION THAT IS PROPRIETARY TO MOLEX INCORPORATED AND SHOULD NOT BE USED WITHOUT WRITTEN PERMISSION						