

**PLEASE CHECK WWW.MOLEX.COM FOR LATEST PART INFORMATION**

**Part Number:** [0712433102](#)  
**Status:** **Active**  
**Description:** 1.27mm (.050") Pitch DDR DIMM Socket, Single Key, Vertical, Plastic Peg, 184 Circuits

**Documents:**

[3D Model](#) [Product Specification PS-71243-9999 \(PDF\)](#)  
[Drawing \(PDF\)](#) [RoHS Certificate of Compliance \(PDF\)](#)

**General**

Product Family	Memory Module Sockets
Series	<a href="#">71243</a>
Component Type	Memory Module
JEDEC Outline	N/A
Product Name	DIMM

**Physical**

Circuits (Loaded)	184
Circuits (maximum)	184
Color - Resin	Black, Natural
Durability (mating cycles max)	25
Entry Angle	Vertical (Top Entry)
Function Key	None
Keying to Mating Part	Yes
Material - Metal	Phosphor Bronze, Stainless Steel
Material - Plating Mating	Gold
Material - Plating Termination	Tin
Material - Resin	High Temperature Thermoplastic
PC Tail Length (in)	0.127 In
PC Tail Length (mm)	3.23 mm
PCB Locator	Yes
PCB Retention	Yes
PCB Thickness Recommended (in)	0.062 In
PCB Thickness Recommended (mm)	1.57 mm
Packaging Type	Tray
Pitch - Mating Interface (in)	0.050 In
Pitch - Mating Interface (mm)	1.27 mm
Pitch - Term. Interface (in)	0.050 In
Pitch - Term. Interface (mm)	1.27 mm
Plating min: Mating (µin)	2
Plating min: Mating (µm)	0.05
Plating min: Termination (µin)	150
Plating min: Termination (µm)	3.81
Temperature Range - Operating	-40°C to +85°C
Termination Interface: Style	Through Hole

**Electrical**

Current - Maximum per Contact	1A
Voltage - Maximum	100V AC (RMS)/DC
Voltage Key	Left

**Solder Process Data**

Lead-free Process Capability	Wave Capable (TH only)
------------------------------	------------------------

**Material Info**

**Reference - Drawing Numbers**

Product Specification	PS-71243-9999
-----------------------	---------------



**EU RoHS**

**ELV and RoHS  
Compliant**  
**REACH SVHC  
Contains SVHC: No  
Halogen-Free  
Status**

**China RoHS**



**Need more information on product  
environmental compliance?**

Email [productcompliance@molex.com](mailto:productcompliance@molex.com)  
For a multiple part number RoHS Certificate of Compliance, [click here](#)

Please visit the [Contact Us](#) section for any non-product compliance questions.

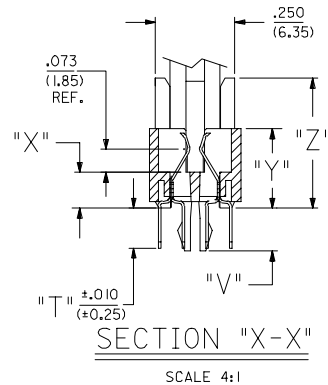
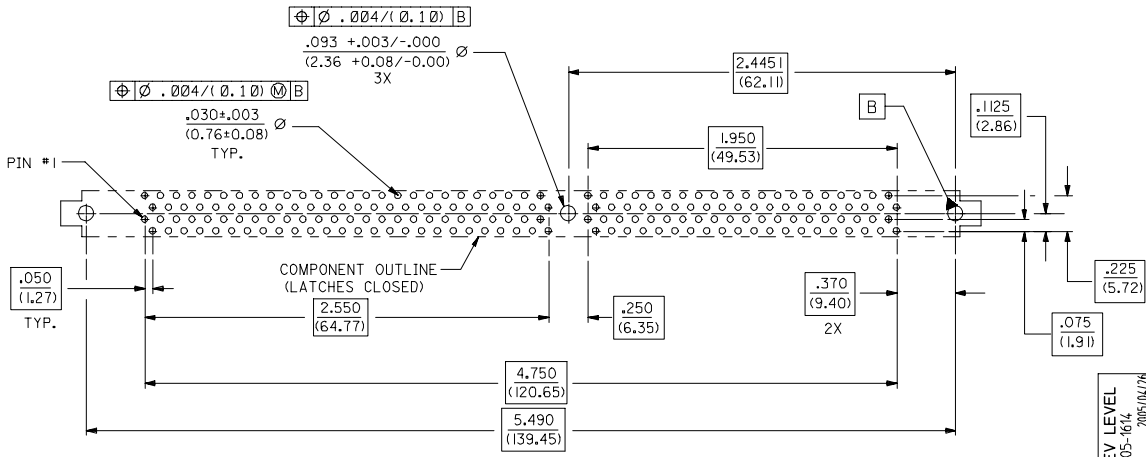
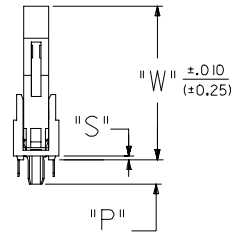
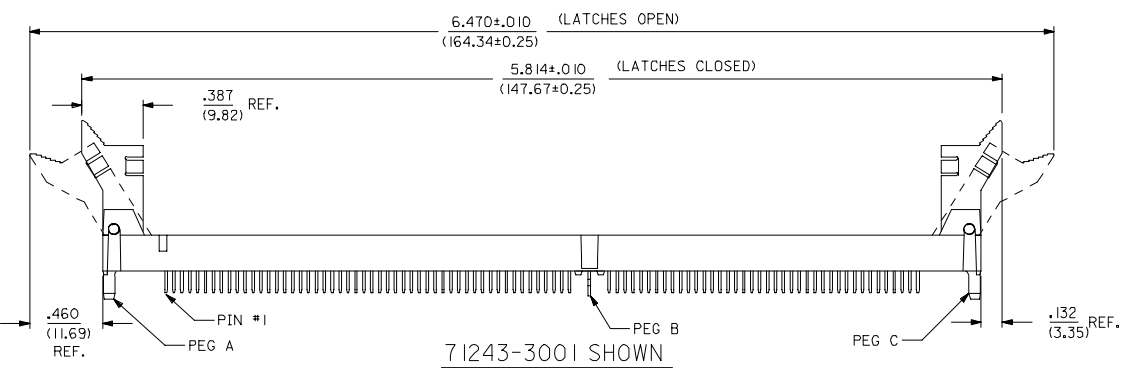
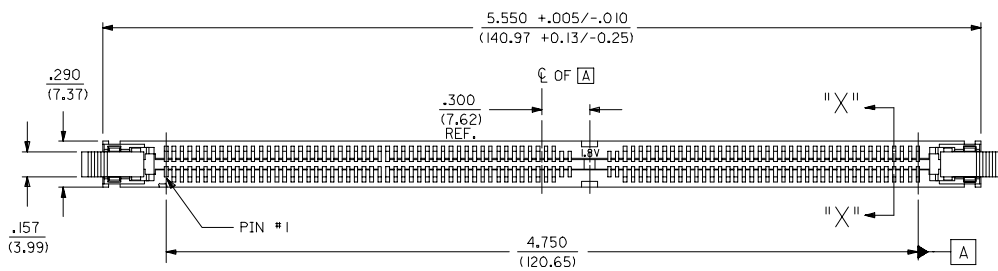
**Search Parts in this Series**

71243Series

This document was generated on 04/13/2010

**PLEASE CHECK [WWW.MOLEX.COM](http://WWW.MOLEX.COM) FOR LATEST PART INFORMATION**

20 19 18 17 16 15 14 13 12 11 10 9 8 7 6 5 4 3 2 1



RECOMMENDED  
P.C. BOARD HOLE PATTERN  
(CONNECTOR SIDE)

NOTES:  
1. CARD SLOT ACCEPTS .050 $\pm$ .004 (1.27 $\pm$ 0.10) MODULE THICKNESS. (MEASURED OVER P.C. PADS).  
2. ALL PEGS ARE INTERFERENCE FITS TO PCB UNLESS NOTED .  
3. REFER TO PRODUCT SPEC PS-71243-9999 FOR PERFORMANCE SPECIFICATIONS.  
4. PRODUCT IS PACKAGED IN TRAYS PER PK-70873-0609.  
5. RECOMMENDED MODULE LAYOUT SHALL BE PER SHEET 2.  
6. RECOMMENDED PLATING ON MODULE PADS: 30 MICROINCH/(0.76 MICROMETER) MINIMUM HARD GOLD (Au) OVER 79 MICROINCH/(2.0 MICROMETER) MINIMUM NICKEL (Ni).  
7. PRODUCT WILL HAVE DATE CODE STAMPED ON SIDE OF HOUSING.

MATERIALS:  
HOUSING - GLASS FILLED LIQUID CRYSTAL POLYMER (LCP), UL 94V-0, COLOR: BLACK.  
TERMINAL- PHOSPHOR BRONZE  
LATCHES - GLASS FILLED HIGH TEMPERATURE NYLON, UL 94V-0, COLOR: IVORY.

PLATING:  
SEE SHEET 2.

2	B
1	B
SHT	REV

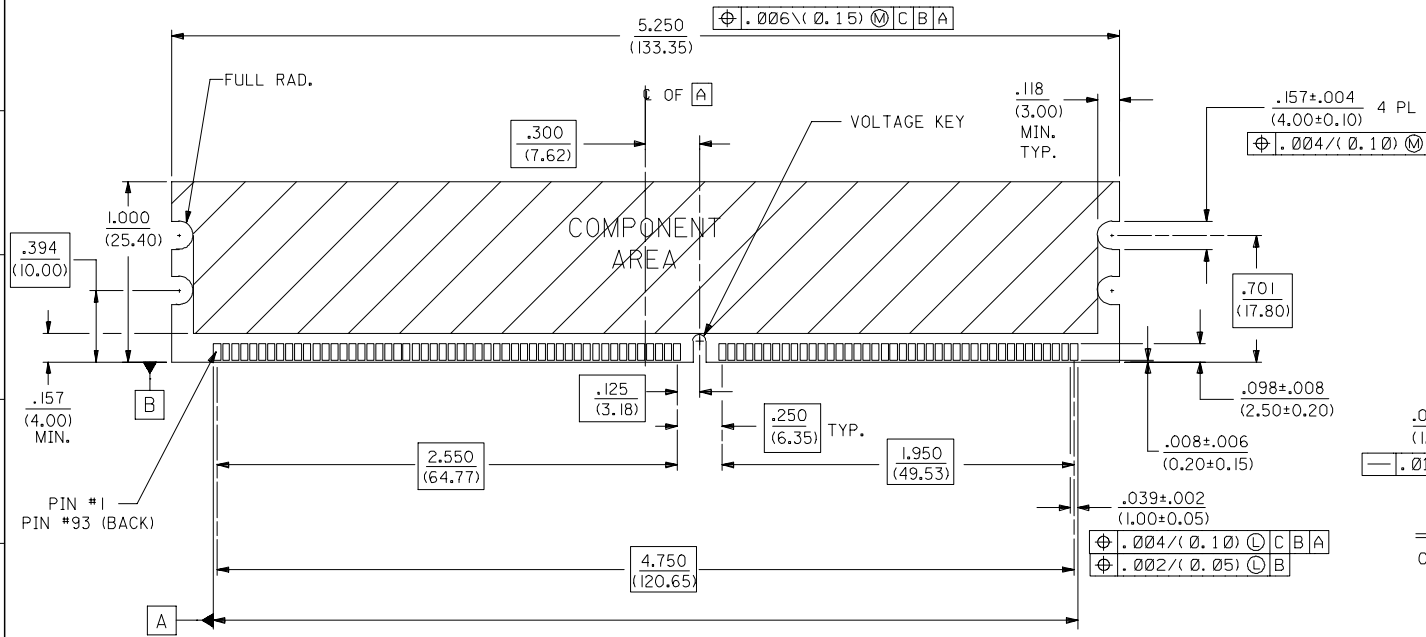
UPDATE REV LEVEL IEC NO. UCP2005-1674 DRAWN BY: DRWINHSMART CHECKED BY: CHICKBARKER APPR: SHILLER 2005/04/26 2005/05/05 2005/04/17	QUALITY SYMBOLS ▽=0 ▽=0	GENERAL TOLERANCES (UNLESS SPECIFIED) <table border="1"> <tr> <th></th> <th>mm</th> <th>INCH</th> </tr> <tr> <td>4 PLACES</td> <td>± .005</td> <td>± .001</td> </tr> <tr> <td>3 PLACES</td> <td>± .005</td> <td>± .001</td> </tr> <tr> <td>2 PLACES</td> <td>± 0.13</td> <td>± 0.01</td> </tr> <tr> <td>1 PLACE</td> <td>± 0.25</td> <td>± .01</td> </tr> </table> ANGULAR ±1/2°		mm	INCH	4 PLACES	± .005	± .001	3 PLACES	± .005	± .001	2 PLACES	± 0.13	± 0.01	1 PLACE	± 0.25	± .01	DIMENSION STYLE IN/MM	SCALE 2:1	DESIGN UNITS INCH	THIRD ANGLE PROJECTION
		mm	INCH																		
	4 PLACES	± .005	± .001																		
	3 PLACES	± .005	± .001																		
2 PLACES	± 0.13	± 0.01																			
1 PLACE	± 0.25	± .01																			
DRAWN BY: RKA CHECKED BY: BB APPROVED BY: SM DATE: 04/08/03 DATE: 04/08/03 DATE: 04/08/03	TITLE .050/(1.27) PITCH SINGLE KEY, 184 CKT DDR DIMM SALES DRAWING	MATERIAL NO. SEE TABLE	DOCUMENT NO. SD-71243-002	SHEET NO. 1 OF 2	MOLEX INCORPORATED																
DRAFT WHERE APPLICABLE MUST REMAIN WITHIN DIMENSIONS																					
THIS DRAWING CONTAINS INFORMATION THAT IS PROPRIETARY TO MOLEX INCORPORATED AND SHOULD NOT BE USED WITHOUT WRITTEN PERMISSION																					

19 18 17 16 15 14 13 12 11 10 9 8 7 6 5 4 3 2 1

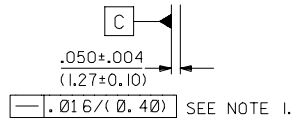
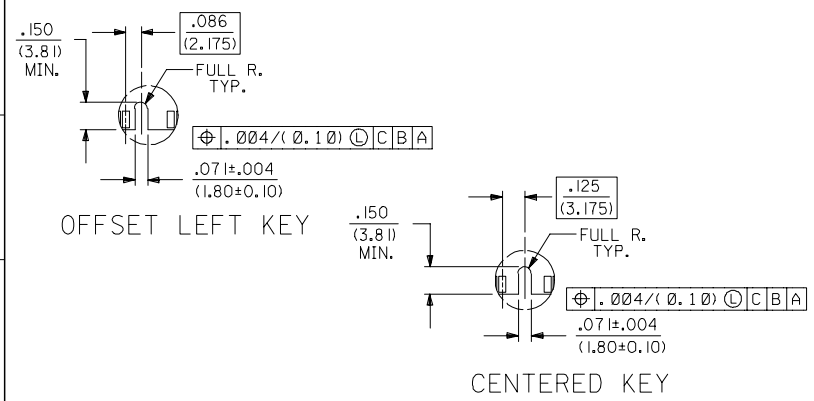
PART NUMBER	DESCRIPTION	VOLTAGE KEY	PEG A	PEG B	PEG C	DIM. "P"	DIM. "S"	DIM. "T"	DIM. "V"	DIM. "W"	DIM. "X"	DIM. "Y"	DIM. "Z"	TERMINAL TYPE
71243-3102	1.8 VOLT VDDQ	CENTER	PLASTIC PEG	METAL FORKLOCK	PLASTIC PEG	.155 (3.94)	.020 (0.51)	.127 (3.23)	.135 (3.43)	.970 (24.64)	.113 (2.87)	.250 (6.35)	.410 (10.41)	NOT LUBRICATED
	2.5 VOLT VDDQ	OFFSET LEFT	PLASTIC PEG	METAL FORKLOCK	PLASTIC PEG	.155 (3.94)	.020 (0.51)	.127 (3.23)	.135 (3.43)	.970 (24.64)	.113 (2.87)	.250 (6.35)	.410 (10.41)	NOT LUBRICATED
71243-3105	1.8 VOLT VDDQ	CENTER	PLASTIC PEG	METAL FORKLOCK	PLASTIC PEG	.155 (3.94)	.020 (0.51)	.127 (3.23)	.135 (3.43)	.970 (24.64)	.113 (2.87)	.250 (6.35)	.410 (10.41)	LUBRICATED
	2.5 VOLT VDDQ	OFFSET LEFT	PLASTIC PEG	NONE	PLASTIC PEG	.155 (3.94)	.020 (0.51)	.127 (3.23)	.135 (3.43)	.970 (24.64)	.113 (2.87)	.250 (6.35)	.410 (10.41)	NOT LUBRICATED

**NOTES:**

- STRAIGHTNESS OF MODULE APPLIES TO THE AREA FROM THE BOTTOM OF THE CARD UP .157/(4.00).
- IF TIE BARS ARE ATTACHED TO PADS, THE TIE BAR SHOULD BE ON AN INTERNAL LAYER, SO THAT THE REMNANT CANNOT CAUSE DAMAGE TO THE CONTACTS.



RECOMMENDED MODULE LAYOUT  
184 CKT 3.3V SHOWN



**PLATING:**

CONTACT AREA NOT LUBRICATED:  
GOLD (Au) FLASH: THICKNESS=2-10 MICROINCH/  
(0.05-0.25 MICROMETER), OVER PALLADIUM-NICKEL  
(Pd-Ni): THICKNESS=30 MICROINCH/(0.76 MICROMETER)  
MINIMUM.

CONTACT AREA LUBRICATED:  
MOLEX EBI LUBRICANT APPLIED OVER GOLD (Au)  
FLASH: THICKNESS=2-10 MICROINCH/(0.05-0.25  
MICROMETER), OVER PALLADIUM-NICKEL (Pd-Ni):  
THICKNESS=30 MICROINCH/(0.76 MICROMETER)  
MINIMUM.

SOLDER TAILS:  
TIN (Sn): THICKNESS=150 MICROINCH/(3.81  
MICROMETER) MINIMUM.

UNDERPLATE:  
NICKEL (Ni) OVER ENTIRE TERMINAL.

ADD 71243-3105 EC NO: UCP2005-1614 DRWNSMART 2005/04/26 CHKD:BBARKER 2005/05/05 APPR:SMILLER 2005/06/17	QUALITY SYMBOLS 	GENERAL TOLERANCES (UNLESS SPECIFIED)		DIMENSION STYLE IN/MM		SCALE 2:1	DESIGN UNITS INCH	THIRD ANGLE PROJECTION	
		4 PLACES ± --- ± --- 3 PLACES ± --- ± .005 2 PLACES ± 0.13 ± .01 1 PLACE ± 0.25 ± --- ANGULAR ±1/2°	mm INCH	DRAWN BY RKA	DATE 04/08/03	CHECKED BY BB	DATE 04/08/03	TITLE .050/(1.27) PITCH SINGLE KEY, 184 CKT DDR DIMM SALES DRAWING	
DRAFT WHERE APPLICABLE MUST REMAIN WITHIN DIMENSIONS		SEE TABLE		MATERIAL NO. SM		DOCUMENT NO. SD-71243-002		SHEET NO. 2 OF 2	
THIS DRAWING CONTAINS INFORMATION THAT IS PROPRIETARY TO MOLEX INCORPORATED AND SHOULD NOT BE USED WITHOUT WRITTEN PERMISSION									