

PLEASE CHECK WWW.MOLEX.COM FOR LATEST PART INFORMATION

Part Number: [0050302036](#)
Status: **Active**
Description: 2.36mm (.093") Diameter Standard .093" Pin and Socket Header, Shrouded, 3 Circuits, with Press-fit Plastic Peg

Documents:

[3D Model](#) [RoHS Certificate of Compliance \(PDF\)](#)
[Drawing \(PDF\)](#)

Agency Certification

CSA LR19980
 UL E29179

General

Product Family PCB Headers
 Series [3099](#)
 Application Wire-to-Board
 Comments Solder Type|Round Pin
 Product Name Standard .093"

Physical

Breakaway No
 Circuits (Loaded) 3
 Circuits (maximum) 3
 Color - Resin Black
 Durability (mating cycles max) 25
 Flammability 94V-2
 Glow-Wire Compliant No
 Material - Plating Mating Tin
 Material - Plating Termination Tin
 Material - Resin Polyester
 Number of Rows 1
 Orientation Vertical
 PCB Locator Yes
 PCB Retention None
 PCB Thickness Recommended (in) 0.062 In
 PCB Thickness Recommended (mm) 1.60 mm
 Packaging Type Bag
 Pitch - Mating Interface (in) 0.198 In
 Pitch - Mating Interface (mm) 5.03 mm
 Polarized to PCB Yes
 Shrouded Fully
 Stackable No
 Surface Mount Compatible (SMC) No
 Temperature Range - Operating -40°C to +105°C
 Termination Interface: Style Through Hole

Electrical

Current - Maximum per Contact 5A
 Voltage - Maximum 250V

Material Info

Old Part Number 3099-03A2

Reference - Drawing Numbers

Sales Drawing SD-3099-3*

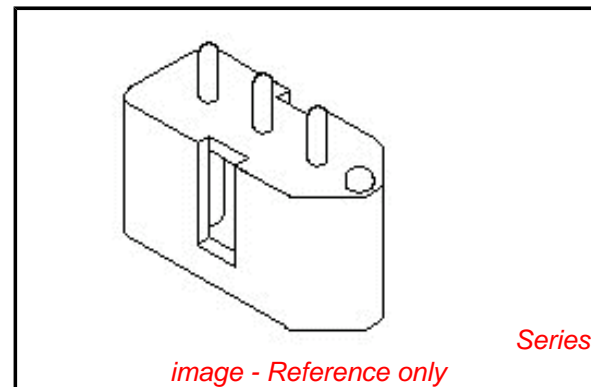


image - Reference only

EU RoHS

**ELV and RoHS
 Compliant**
**REACH SVHC
 Not Reviewed**
**Halogen-Free
 Status
 Not Reviewed**

China RoHS



**Need more information on product
 environmental compliance?**

Email productcompliance@molex.com
 For a multiple part number RoHS Certificate of Compliance, [click here](#)

Please visit the [Contact Us](#) section for any non-product compliance questions.

Search Parts in this Series

[3099Series](#)

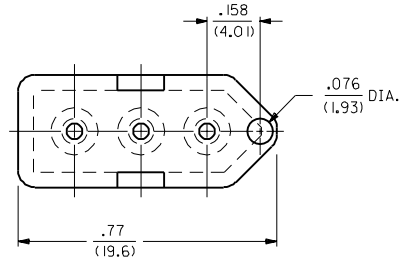
Mates With

[1490r](#) , [1292r](#) , [1396r](#) , [1375r](#) , [1360r](#) , [1261r](#)

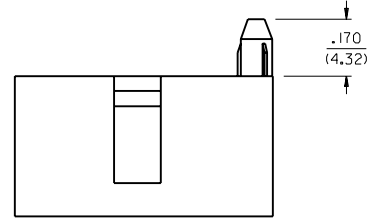
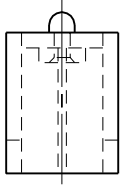
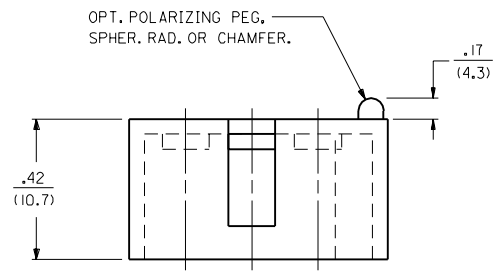
This document was generated on 04/02/2010

PLEASE CHECK WWW.MOLEX.COM FOR LATEST PART INFORMATION

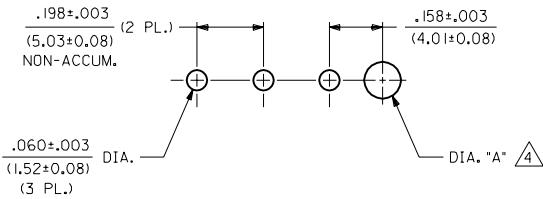
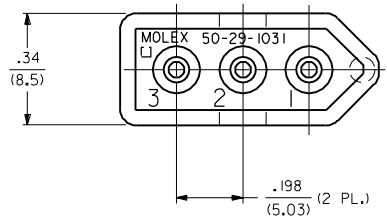
PART NO.	ENG. NO.	PEG TYPE	DIA. "A"
50-29-1031	3099-3A1	POLARIZING	.100±.005 (2.54±0.13)
97-00-0151	3099-3B1	NONE	
50-30-2036	3099-3A2	LOCKING	.103 ±.003/-0.002 (2.62 ±0.08/-0.05)



- NOTES:
- THIS HOUSING FOR USE WITH STANDARD .093/(2.36) SERIES RECEPTACLES.
 - MATERIAL:
I- UNFILLED POLYESTER, 94V-0, COLOR-BLACK
 - THIS HOUSING ACCEPTS I840, 43080 OR 43631 SERIES PIN AND SOCKET TERMINALS.
 - \triangle ONLY REQUIRED WHEN USING PARTS WITH OPTIONAL POLARIZING OR LOCKING PEG.
 - PARTS TO BE MOUNTED ON SUPPORTED EDGE OF P.C. BOARD.



VIEW OF HOUSING SHOWING OPTIONAL LOCKING PEG



RECOMMENDED P.C. BOARD HOLE PATTERN

G2	FINAL REL. - 3a2 ECN #17 0227 9-9-96 RW
G1	REVISE PER ECR U6 0630 GC 11/27/95 RW
G	CHG. COLOR TO BLK ECN #14 0193 2-24-94 RW
F	MAT'L WAS GLASS FIL'D. ECR U3 1669 GC 11/10/93 RW
E	DEL MAT'L OPT. 2 ECR U2-1469 AFG 92-10-09 RW
D	REVISE V-0 MAT'L. ECR U2 0079 1/17/92 RW
C	REV PER DETAIL ECR U90347 KBW 08-30-89 RW
B	REVISED PER ECR U90347 GEP 5-25-89 RW
A	REV. WITH EDP'S ECR U8 2300 GEP 1-25-89 RW

DIMENSIONS SHOWN METRIC (INCH)		UNLESS OTHERWISE SPECIFIED TOLERANCES: ANGULAR $\pm .02$		MFG. SH. REV. LTR. REVISIONS	
3 PLACE	$\pm .010$	---	---	TITLE	
2 PLACE	$\pm .014$	± 0.25		3 CKT. HOUSING, ENCLOSED HEADER, .198/(5.03) CENTERS	
1 PLACE	---	± 0.35		PART NO. DATE	
DRAFT WHERE APPLICABLE MUST REMAIN WITHIN DIMENSIONS				MOLEX INCORPORATED SHEET NO. 1 OF 1 DATE 1/25/89	
SEE CHART				DRWG. NO. SD-3099-3	
FILE NAME S30993X1.DWG				DIV. SIZE	
THIS DRAWING CONTAINS INFORMATION THAT IS PROPRIETARY TO MOLEX INC. AND SHOULD NOT BE USED WITHOUT WRITTEN PERMISSION.				CP C	