

PLEASE CHECK WWW.MOLEX.COM FOR LATEST PART INFORMATION

Part Number: [1300990149](#)
Status: **Active**
Overview: [brad wire mesh grips](#)
Description: Deluxe Cord Grips 1/2" NPT Gasket

Documents:

[Drawing \(PDF\)](#) [RoHS Certificate of Compliance \(PDF\)](#)

General

Product Family	Cable Grips
Series	130099
Eye Type	N/A
Insulated	No
O-Ring	No
Overview	brad wire mesh grips
Product Name	MAX-LOC®
Type	Gaskets
Use With	130097 1/2" NPT Tread Size Strain Relief
Woodhead	Yes

Physical

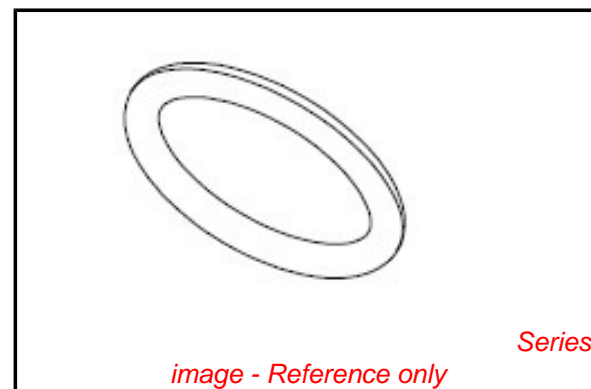
Approximate Break Strength	N/A
Bale Length	N/A
Body Style	N/A
Cable Diameter	N/A
Color - Grommet	N/A
Gender	N/A
Material - Body	N/A
Material - Grip	Nylon
Mesh Length	N/A
Number of Holes	N/A
Strain Relief Force	35 lbs
Thread Size	1/2" NPT

Material Info

Old Part Number 5611

Reference - Drawing Numbers

Sales Drawing SD-130099-147



EU RoHS

**ELV and RoHS
Compliant**
REACH SVHC
 Not Reviewed
**Halogen-Free
Status**
 Not Reviewed

China RoHS



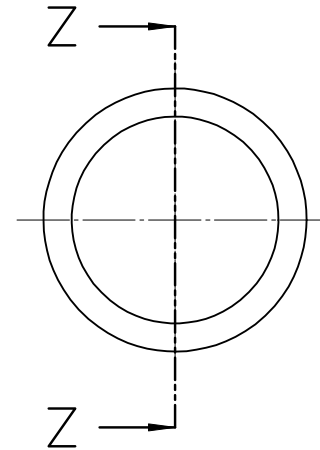
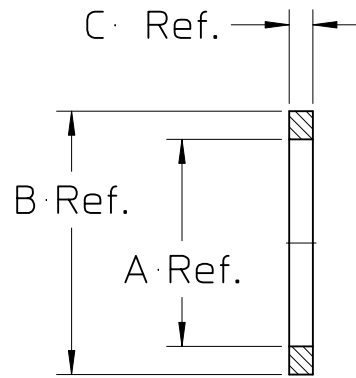
**Need more information on product
environmental compliance?**

Email productcompliance@molex.com
 For a multiple part number RoHS Certificate of
 Compliance, [click here](#)

Please visit the [Contact Us](#) section for any
 non-product compliance questions.

Search Parts in this Series
[130099Series](#)

MATERIAL NUMBER	OLD PART NUMBER	A	B	C	N.P.T. SIZE REF.	MATERIAL	FINISH
1300990147	5609	.540	.687	.062	1/4"	Neoprene	Black
1300990148	5610	.687	.937	.062	3/8"	Neoprene	Black
1300990149	5611	.843	1.093	.078	1/2"	Neoprene	Black
1300990150	5612	1.062	1.312	.078	3/4"	Neoprene	Black
1300990151	5613	1.312	1.687	.078	1"	Neoprene	Black
1300990152	5614	1.671	2.046	.078	1-1/4"	Neoprene	Black



SECTION Z-Z

ENTER DESCRIPTION EC NO: WNA2009-0773 DRWN: NKUMAR01 2009/05/25 CHKD: APPR: JFMURPHY 2009/07/08 DESCRIPTION	QUALITY SYMBOLS ▽=0 ∇=0	GENERAL TOLERANCES (UNLESS SPECIFIED)		DIMENSION STYLE IN/MM		SCALE 2:1	DESIGN UNITS INCH	THIRD ANGLE PROJECTION		
			mm	INCH	DRAWN BY NKUMAR01	DATE 25/05/09	TITLE GASKET SEAL - 1/4 MAX-LOC SEE00-5089			
		4 PLACES	± ---	± ---	CHECKED BY BWOODMAN	DATE 25/05/09				
		3 PLACES	± ---	± ---	APPROVED BY JFMURPHY		DATE 25/05/09	MOLEX INCORPORATED		
2 PLACES	± ---	± 0.010	MATERIAL NO. SEE CHART		DOCUMENT NO. SD-130099-147	SHEET NO. 1 OF 1				
1 PLACE	± 0.3	± ---	ANGULAR ± 1/2°		THIS DRAWING CONTAINS INFORMATION THAT IS PROPRIETARY TO MOLEX INCORPORATED AND SHOULD NOT BE USED WITHOUT WRITTEN PERMISSION					
DRAFT WHERE APPLICABLE MUST REMAIN WITHIN DIMENSIONS										