

**PLEASE CHECK WWW.MOLEX.COM FOR LATEST PART INFORMATION**

**Part Number:** [0197114001](#)  
**Status:** **Active**  
**Description:** PCB Tab Right Angle Quick Disconnect, Male, for Wire, Box, Tab 6.35mm (.250") x 0.81mm (.032")

**Documents:**

[Drawing \(PDF\)](#) [RoHS Certificate of Compliance \(PDF\)](#)

**Agency Certification**

UL E79133

**General**

Product Family Quick Disconnects  
 Series [19711](#)  
 Crimp Quality Equipment Yes  
 Product Name PCB Tab  
 Type Quick Disconnect

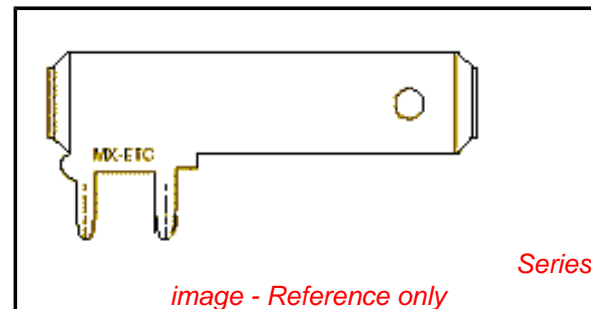
**Physical**

Barrel Type N/A  
 Gender Male  
 Glow-Wire Compliant No  
 Insulation None  
 Lock to Mating Part None  
 Material - Metal Brass  
 Orientation PCB Flag Tab  
 Packaging Type Bag  
 Polarized to Mating Part No  
 Tab Thickness 0.81mm (.032")  
 Tab Width 6.35mm (.250")  
 Wire Insulation Diameter N/A  
 Wire Size AWG N/A

**Electrical**

Voltage - Maximum N/A

**Material Info**



**EU RoHS**

**ELV and RoHS  
Compliant**

**REACH SVHC**

**Contains SVHC: No**

**Halogen-Free**

**Status**

**Halogen-Free**

**Need more information on product  
environmental compliance?**

Email [productcompliance@molex.com](mailto:productcompliance@molex.com)  
 For a multiple part number RoHS Certificate of  
 Compliance, [click here](#)

Please visit the [Contact Us](#) section for any  
 non-product compliance questions.

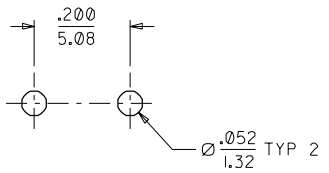
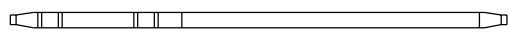
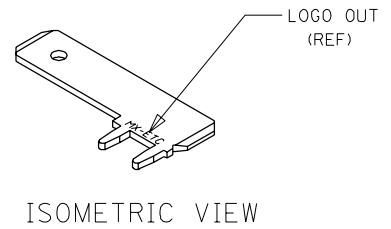
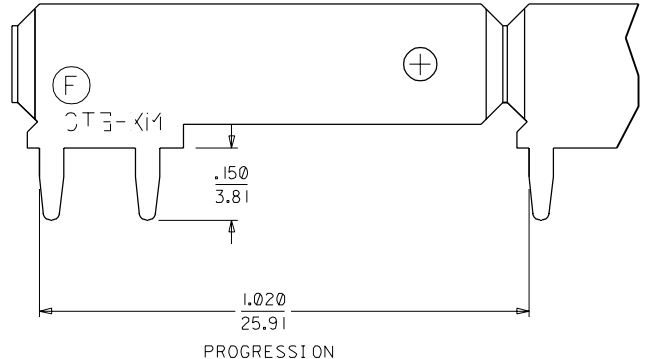
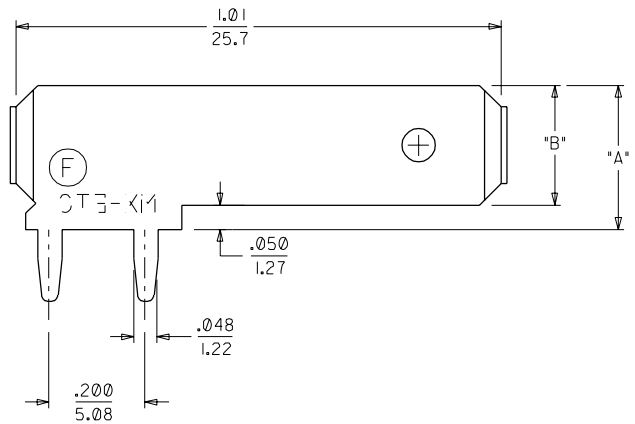
**China RoHS**



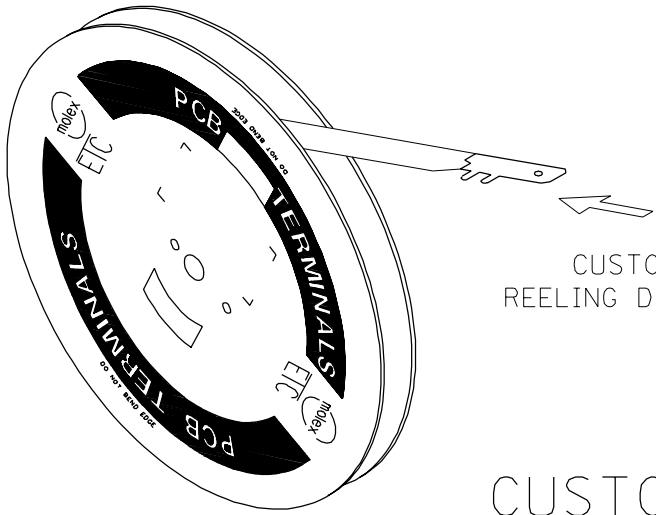
**Search Parts in this Series**

[19711Series](#)

MATERIAL NUMBER	ENGINEERING NUMBER	CUSTOMER NUMBER	CARRIER	PLATING SEE NOTE 6 & 7.	DIMENSION "A"	DIMENSION "B"	HOLE
197114001	19711-4001	-	LOOSE	TIN/LEAD	.300	.250	YES
197114003	19711-4003	-	STRIP	TIN/LEAD	.300	.250	YES
197114005	19711-4005	-	LOOSE	TIN/LEAD	.300	.250	OMIT
197114007	19711-4007	-	STRIP	TIN/LEAD	.300	.250	OMIT



RECOMMENDED P.W.B.  
HOLE LAYOUT



CUSTOMER DRAWING

- NOTES:
1. BARE EDGES PERMISSIBLE AT CARRIER CUT OFF.
  2. MATERIAL: BRASS.
  3. MATERIAL THICKNESS: .032 ±.001/(0.813 ±0.03)
  4. TAB CONFORMS TO NEMA SPECIFICATIONS.
  5. ALL DIMENSIONS AND NOTES ARE REFERENCE ONLY UNLESS NOTED.
  6. PLATING: THICKNESS:90/10 TIN/LEAD: 150 μ in(3.81μm) MIN THICKNESS.
  7. FINISH: MATTE

MOVED LOGO FARSD EC NO. ETC2002-0182 DRAWING: 01/12/12 CHK: HEB 01/12/12 APPR: RWD 01/12/12	QUALITY SYMBOLS MAJOR $\nabla = 0$ CRITICAL $\nabla = 0$	GENERAL TOLERANCES: (UNLESS SPECIFIED) mm    INCH	SCALE 5: 1	DESIGN UNITS <input type="checkbox"/> mm <input checked="" type="checkbox"/> INCH	DIMENSIONS: <input type="checkbox"/> mm <input checked="" type="checkbox"/> INCH <input type="checkbox"/> mm ONLY	SHT    REV REVISE ON CAD ONLY
	DESCRIPTION 4 PLACES ±0.    ±. 3 PLACES ±0.    ±.005 2 PLACES ±0.13    ±.01 1 PLACE ±0.25    ±. ANGULAR: ± 1/2 °	DRAWN BY & DATE JH    98/04/28	TITLE: QUICK DISCONNECT PCB MOUNTABLE .250 X .032 TAB		Molex MOLEX INCORPORATED	
REV F	DRAFT WHERE APPLICABLE MUST REMAIN WITHIN DIMENSIONS	CAD FILENAME SD-19711-400 .DGN	MATERIAL NO. SEE CHART	DRAWING NO. SD-19711-400	SHEET NO. 1 OF 1	SIZE C