

PLEASE CHECK WWW.MOLEX.COM FOR LATEST PART INFORMATION

Part Number: [0981930001](#)
Status: **Active**
Overview: [mox crimp terminals](#)
Description: 2.85mm (.112") Pitch MOX Receptacle Housing with TPA™, Single Row, 6 Circuits, Black

Documents:

[Drawing \(PDF\)](#) [Product Specification PS-98193-001 \(PDF\)](#)
[Packaging Specification \(PDF\)](#) [RoHS Certificate of Compliance \(PDF\)](#)

General

Product Family Crimp Housings
 Series [98193](#)
 Overview [mox crimp terminals](#)
 Product Name MOX

Physical

Circuits (maximum) 6
 Color - Resin Black
 Gender Female
 Glow-Wire Compliant No
 Keying to Mating Part None
 Lock to Mating Part Yes
 Material - Resin Nylon
 Number of Rows 1
 Packaging Type Bag
 Panel Mount No
 Pitch - Mating Interface (in) 0.112 In
 Pitch - Mating Interface (mm) 2.85 mm
 Pitch - Term. Interface (in) 0.112 In
 Pitch - Term. Interface (mm) 2.85 mm
 Polarized to Mating Part Yes
 Stackable No
 Temperature Range - Operating -40°C to +105°C

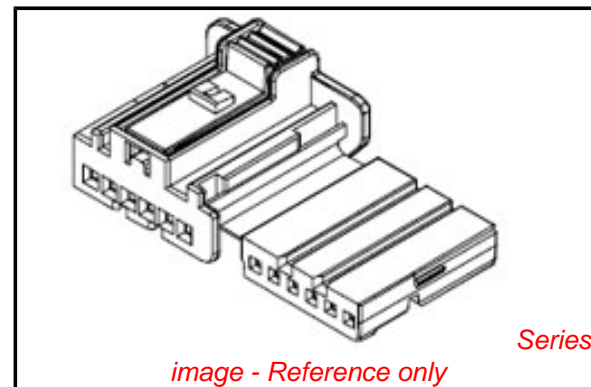
Electrical

Current - Maximum per Contact 6A

Material Info

Reference - Drawing Numbers

Application Specification AS-98193-018
 Packaging Specification PK-98193-020
 Product Specification PS-98193-001, RPS-98192-004
 Sales Drawing SD-98193-001, SD-98193-004
 Test Summary TS-98193-008



EU RoHS

ELV and RoHS Compliant
REACH SVHC
Contains SVHC: No
Halogen-Free Status

China RoHS



Need more information on product environmental compliance?

Email productcompliance@molex.com
 For a multiple part number RoHS Certificate of Compliance, [click here](#)

Please visit the [Contact Us](#) section for any non-product compliance questions.

Search Parts in this Series

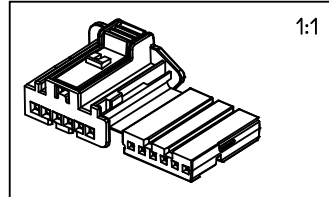
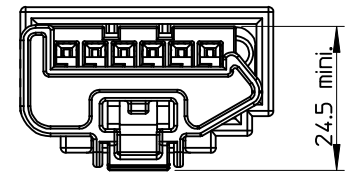
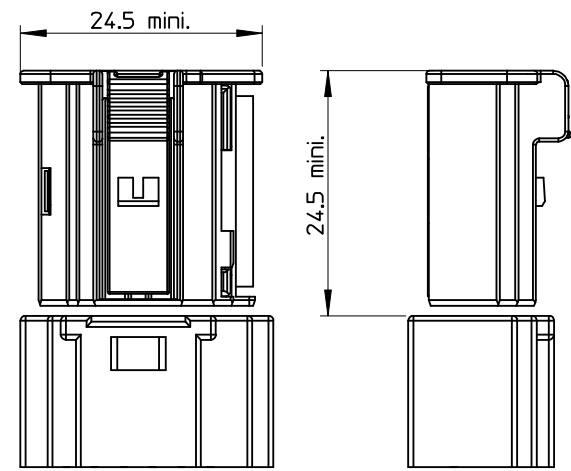
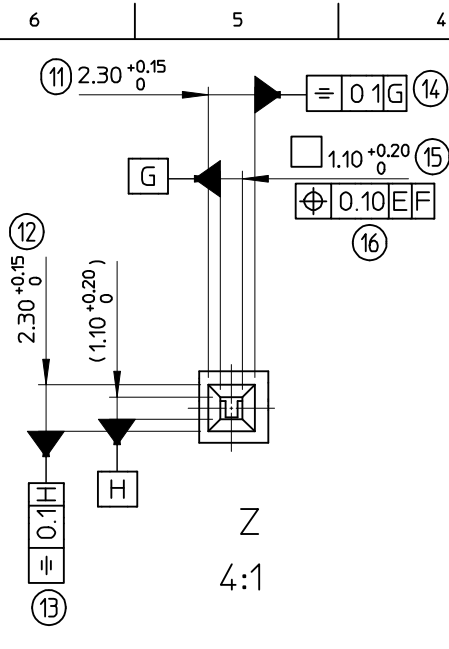
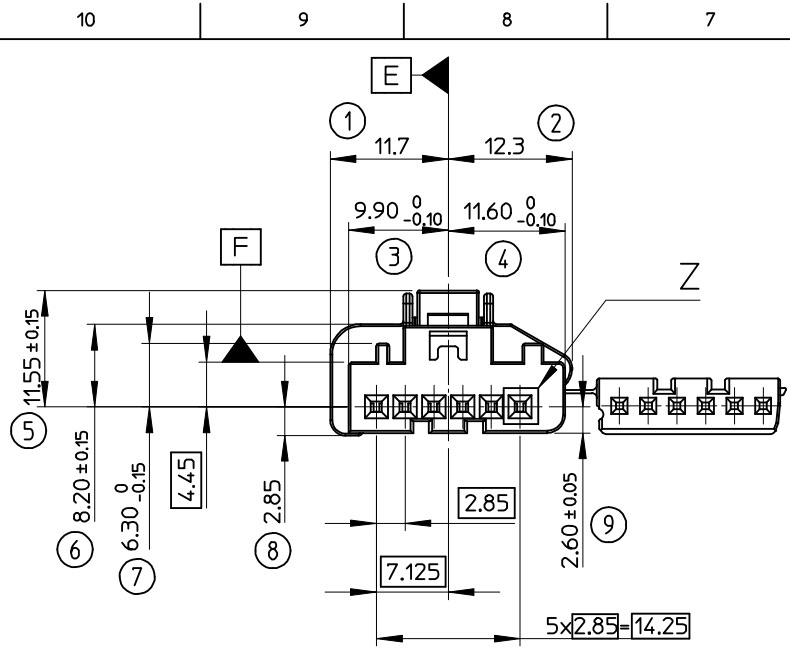
[98193Series](#)

Mates With

Contact Molex

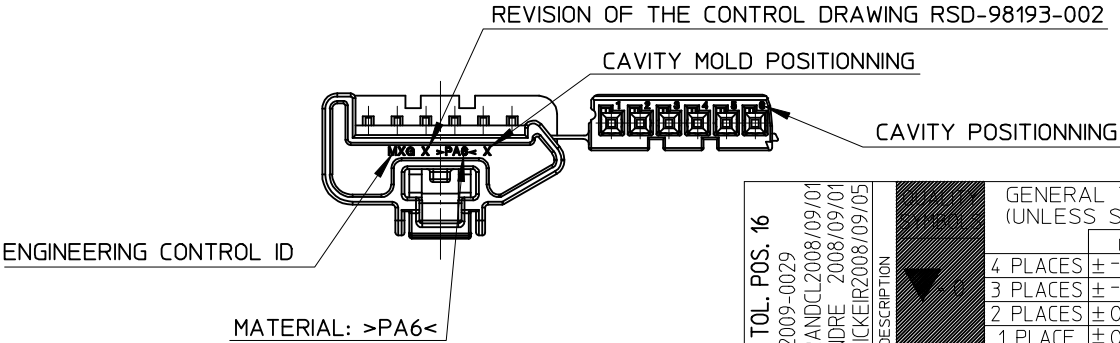
Use With

[98658](#) MOX Crimp Terminal



- Necessary volume for the housing assembly.
- Allow an additional volume for the unmating.

NOTES :
1- MATERIAL : POLYAMIDE (PA), UL94 V2
COLOR: BLACK
2- USE WITH: 98658 (MOX 0.63 TERMINAL)
3- APPLICATION SPECIFICATION: AS-98193-018



ENGINEERING CONTROL ID

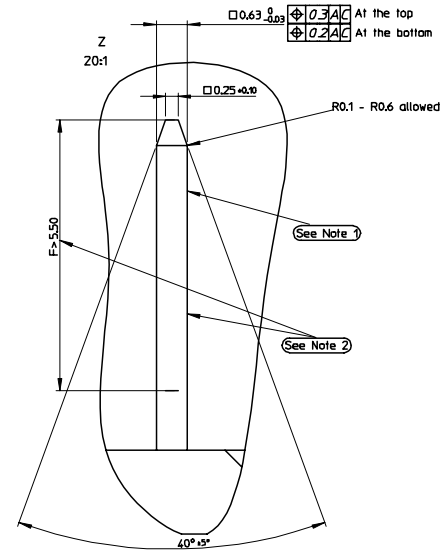
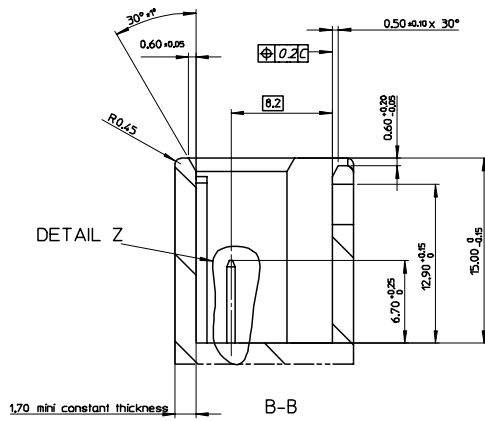
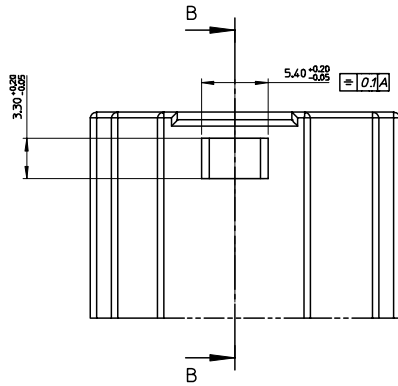
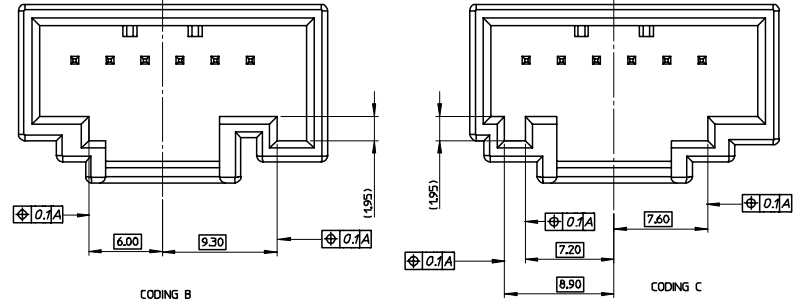
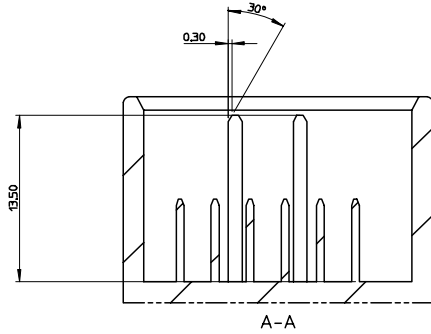
MATERIAL: >PA6<

MODIF. TOL. POS. 16	DESCRIPTION
EC NO: GZ009-0029	
DRWN: PGRANDCL 2008/09/01	
CHKD: MANDRE 2008/09/01	
APPR: LSTICKEI 2008/09/05	
REV	

GENERAL TOLERANCES (UNLESS SPECIFIED)	
	mm INCH
4 PLACES	± --- ± ---
3 PLACES	± --- ± ---
2 PLACES	± 0.10 ± ---
1 PLACE	± 0.20 ± ---
ANGULAR ± 1/2°	
DRAFT WHERE APPLICABLE	
MUST REMAIN WITHIN DIMENSIONS	

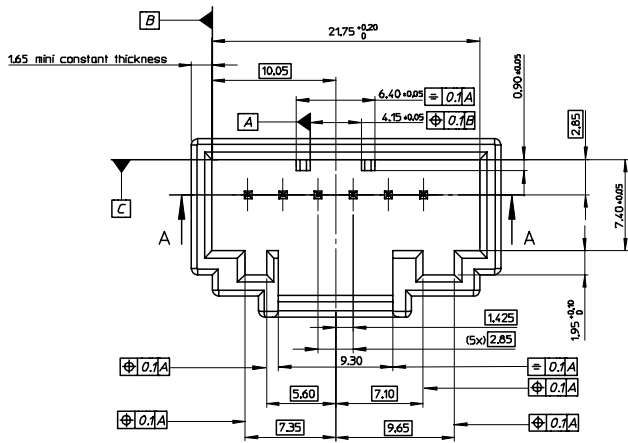
SCALE	DESIGN UNITS
2:1	METRIC
DIMENSION STYLE	
MM ONLY	
DRAWN BY	DATE
MRIVIERE	04/04/2006
CHECKED BY	DATE
LSTICKEI	04/04/2007
APPROVED BY	DATE
LSTICKEI	04/04/2007

FIRST ANGLE PROJECTION	REVISE ON CAD ONLY
TITLE	
MOX HOUSING 6 CKT CUSTOMER DRAWING	
molex MOLEX INCORPORATED	
MATERIAL NO.	DOCUMENT NO.
0981930001	SD-98193-001
SHEET NO.	1 OF 1
THIS DRAWING CONTAINS INFORMATION THAT IS PROPRIETARY TO MOLEX INCORPORATED AND SHOULD NOT BE USED WITHOUT WRITTEN PERMISSION	



NOTA:

- No burrs / No sharp edges allowed
- Base material: copper alloy, IACS mini = 25%, tensile strength mini = 560N/mm²
Plating : 1 to 3 μm of pure tin (Sn)
1.3 μm mini of Nickel (Ni) underlayer
Minimum plating area = F
- recommended plastic material: >PBT-GF15<
- BLACK CODING A SHOWN.
- MINIMUM PIN RETENTION FORCE = 40 N.
- HEADER CODING A COMPATIBLE WITH MOLEX MATERIAL NUMBER 981930001.



FIRST RELEASE CC NO. 02003-0303 DRAWN BY: JBERVAS CHKD. JLDUCLOS APPR: STICKEIR DATE: 2005/04/20 DATE: 2005/04/20	QUALITY SYMBOLS 07-0	GENERAL TOLERANCES (UNLESS SPECIFIED)		DIMENSION STYLE		SCALE		DESIGN UNITS		FIRST ANGLE PROJECTION
		mm	INCH	MM ONLY	DATE	5:1	METRIC			
DRAWN BY: JBERVAS DATE: 2005/04/05		4 PLACES ±		DRAWN BY: JBERVAS DATE: 2005/04/05		TITLE: INTERFACE DRAWING MOX RCPT HSG 6 CKT 98193 SERIES		MOLEX INCORPORATED		SHEET NO. 1 OF 1
CHECKED BY: JLDUCLOS DATE: 2005/04/20		3 PLACES ±		CHECKED BY: JLDUCLOS DATE: 2005/04/13		MATERIAL NO. N/A		DOCUMENT NO. SD-98193-004		
APPROVED BY: STICKEIR DATE: 2005/04/14		2 PLACES ±0.10		APPROVED BY: STICKEIR DATE: 2005/04/14		SIZE A1		THIS DRAWING CONTAINS INFORMATION THAT IS PROPRIETARY TO MOLEX INCORPORATED AND SHOULD NOT BE USED WITHOUT WRITTEN PERMISSION		
DRAFT WHERE APPLICABLE MUST REMAIN WITHIN DIMENSIONS		1 PLACE ±0.2		ANGULAR ±1/2°						