

PLEASE CHECK WWW.MOLEX.COM FOR LATEST PART INFORMATION

Part Number: [0712433004](#)
Status: **Active**
Description: 1.27mm (.050") Pitch DDR DIMM Socket, Single Key, Vertical, Plastic Peg, 184 Circuits

Documents:

[3D Model](#) [Product Specification PS-71243-9999 \(PDF\)](#)
[Drawing \(PDF\)](#) [RoHS Certificate of Compliance \(PDF\)](#)

Agency Certification

CSA LR19980

General

Product Family Memory Module Sockets
 Series [71243](#)
 Component Type Memory Module
 JEDEC Outline N/A
 Product Name DIMM

Physical

Circuits (Loaded) 184
 Circuits (maximum) 184
 Color - Resin Black, Natural
 Durability (mating cycles max) 25
 Entry Angle Vertical
 Flammability 94V-0
 Function Key None
 Keying to Mating Part Yes
 Material - Metal Phosphor Bronze, Stainless Steel
 Material - Plating Mating Gold
 Material - Plating Termination Nickel
 Material - Resin High Temperature Thermoplastic
 PC Tail Length (in) 0.127 In
 PC Tail Length (mm) 3.23 mm
 PCB Locator Yes
 PCB Retention Yes
 PCB Thickness Recommended (in) 0.062 In
 PCB Thickness Recommended (mm) 1.57 mm
 Packaging Type Tray
 Pitch - Mating Interface (in) 0.050 In
 Pitch - Mating Interface (mm) 1.27 mm
 Pitch - Term. Interface (in) 0.050 In
 Pitch - Term. Interface (mm) 1.27 mm
 Temperature Range - Operating -40°C to +85°C
 Termination Interface: Style Through Hole

Electrical

Current - Maximum per Contact 1A
 Voltage - Maximum 100V AC (RMS)/DC
 Voltage Key Center

Solder Process Data

Duration at Max. Process Temperature (seconds) 40
 Lead-free Process Capability Wave Capable (TH only)
 Max. Cycles at Max. Process Temperature 3
 Process Temperature max. C 245

Material Info

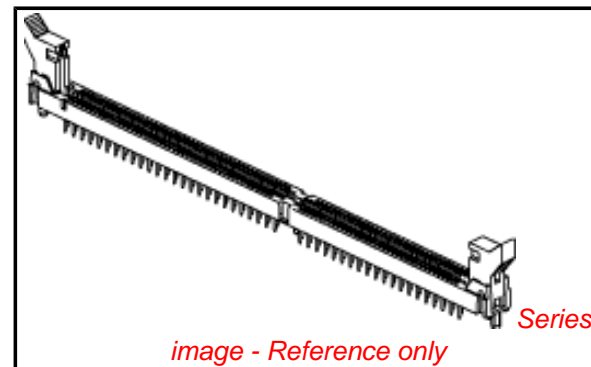
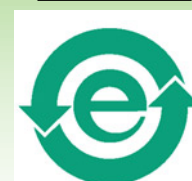


image - Reference only

EU RoHS

**ELV and RoHS
 Compliant**
**REACH SVHC
 Contains SVHC: No**
**Halogen-Free
 Status**

China RoHS



Not Reviewed

**Need more information on product
 environmental compliance?**

Email productcompliance@molex.com
 For a multiple part number RoHS Certificate of
 Compliance, [click here](#)

Please visit the [Contact Us](#) section for any
 non-product compliance questions.

Search Parts in this Series

[71243Series](#)

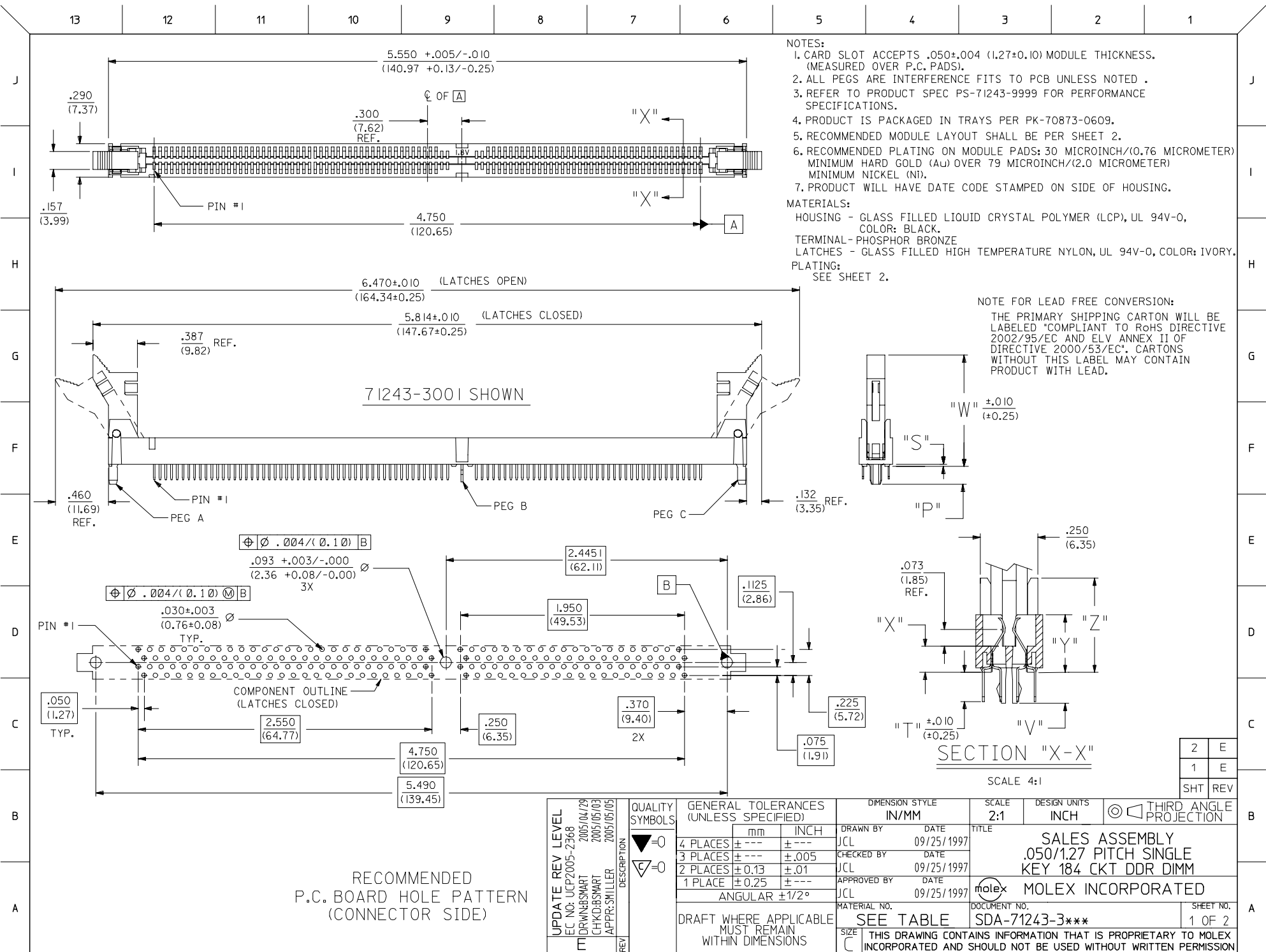
Reference - Drawing Numbers

Product Specification
Sales Drawing

PS-71243-9999
SDA-71243-3***

This document was generated on 04/13/2010

PLEASE CHECK WWW.MOLEX.COM FOR LATEST PART INFORMATION



- NOTES:
- CARD SLOT ACCEPTS .050±.004 (1.27±0.10) MODULE THICKNESS. (MEASURED OVER P.C. PADS).
 - ALL PEGS ARE INTERFERENCE FITS TO PCB UNLESS NOTED .
 - REFER TO PRODUCT SPEC PS-71243-9999 FOR PERFORMANCE SPECIFICATIONS.
 - PRODUCT IS PACKAGED IN TRAYS PER PK-70873-0609.
 - RECOMMENDED MODULE LAYOUT SHALL BE PER SHEET 2.
 - RECOMMENDED PLATING ON MODULE PADS: 30 MICROINCH/(0.76 MICROMETER) MINIMUM HARD GOLD (Au) OVER 79 MICROINCH/(2.0 MICROMETER) MINIMUM NICKEL (Ni).
 - PRODUCT WILL HAVE DATE CODE STAMPED ON SIDE OF HOUSING.

MATERIALS:

- HOUSING - GLASS FILLED LIQUID CRYSTAL POLYMER (LCP), UL 94V-0, COLOR: BLACK.
- TERMINAL - PHOSPHOR BRONZE
- LATCHES - GLASS FILLED HIGH TEMPERATURE NYLON, UL 94V-0, COLOR: IVORY.

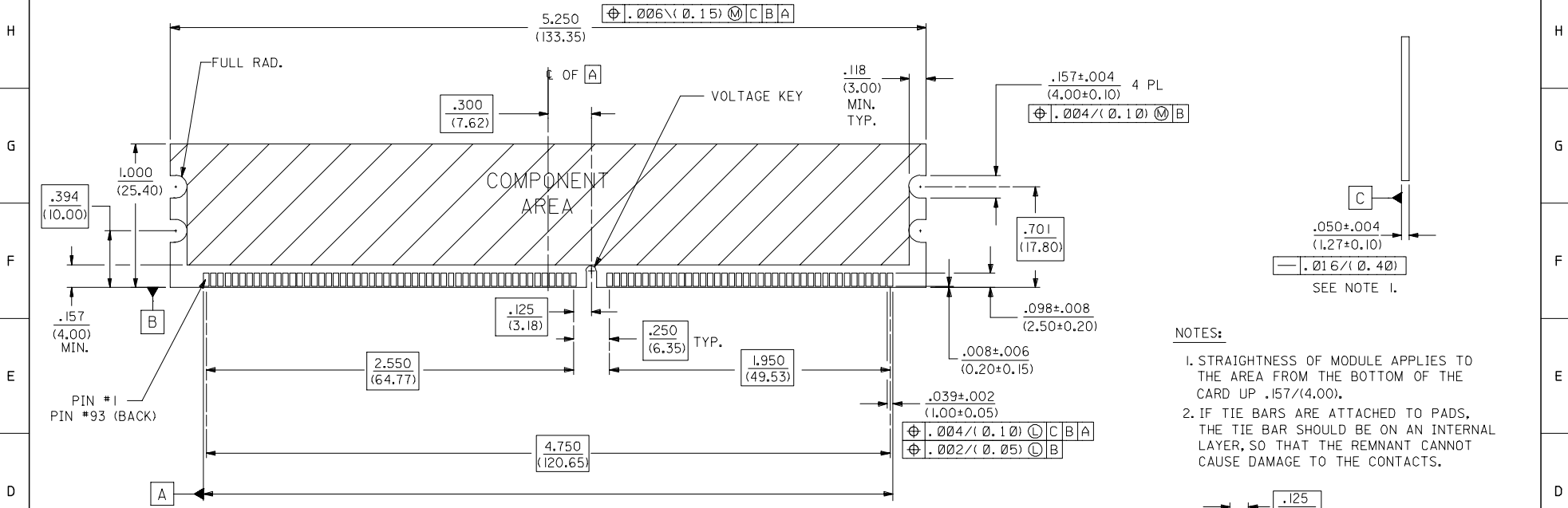
PLATING:
SEE SHEET 2.

NOTE FOR LEAD FREE CONVERSION:
THE PRIMARY SHIPPING CARTON WILL BE LABELED "COMPLIANT TO RoHS DIRECTIVE 2002/95/EC AND ELV ANNEX II OF DIRECTIVE 2000/53/EC". CARTONS WITHOUT THIS LABEL MAY CONTAIN PRODUCT WITH LEAD.

| | |
|-----|-----|
| 2 | E |
| 1 | E |
| SHT | REV |

| UPDATE REV LEVEL EC NO: UCP2005-2368 M DRW:BSWART 2005/04/29 CHKD:BSWART 2005/05/03 APPR:SMILLER 2005/05/05 REV DESCRIPTION | QUALITY SYMBOLS | GENERAL TOLERANCES (UNLESS SPECIFIED) | DIMENSION STYLE | SCALE | DESIGN UNITS | THIRD ANGLE PROJECTION | | | | | | | | | | | | | | | |
|--------------------------------------------------------------------------------------------------------------------------------------------|------------------------------------------------------|-----------------------------------------------------------------------------------------------------------------------------------------------------------------------------------------------------------------------------------------------------------------------------------------------------------------------------------------------------------------|-----------------|------------------------------------------------------------------|----------------|-------------------------------------------------------------------------------------------------------------------------------|--------|---------|----------|--------|---------|----------|--------|-------|---------|--------|-------|-------|-----|------|--|
| | $\nabla=0$ $\nabla=0$ | <table border="1"> <thead> <tr> <th></th> <th>mm</th> <th>INCH</th> </tr> </thead> <tbody> <tr> <td>4 PLACES</td> <td>± .005</td> <td>± .0005</td> </tr> <tr> <td>3 PLACES</td> <td>± .005</td> <td>± .0005</td> </tr> <tr> <td>2 PLACES</td> <td>± 0.13</td> <td>± .01</td> </tr> <tr> <td>1 PLACE</td> <td>± 0.25</td> <td>± .01</td> </tr> </tbody> </table> | | mm | INCH | 4 PLACES | ± .005 | ± .0005 | 3 PLACES | ± .005 | ± .0005 | 2 PLACES | ± 0.13 | ± .01 | 1 PLACE | ± 0.25 | ± .01 | IN/MM | 2:1 | INCH | |
| | | mm | INCH | | | | | | | | | | | | | | | | | | |
| | 4 PLACES | ± .005 | ± .0005 | | | | | | | | | | | | | | | | | | |
| 3 PLACES | ± .005 | ± .0005 | | | | | | | | | | | | | | | | | | | |
| 2 PLACES | ± 0.13 | ± .01 | | | | | | | | | | | | | | | | | | | |
| 1 PLACE | ± 0.25 | ± .01 | | | | | | | | | | | | | | | | | | | |
| | DRAWN BY | DATE | TITLE | SALES ASSEMBLY .050/1.27 PITCH SINGLE KEY 184 CKT DDR DIMM | | | | | | | | | | | | | | | | | |
| | CHECKED BY | DATE | MATERIAL NO. | | DOCUMENT NO. | SHEET NO. | | | | | | | | | | | | | | | |
| | APPROVED BY | DATE | SEE TABLE | | SDA-71243-3*** | 1 OF 2 | | | | | | | | | | | | | | | |
| | DRAFT WHERE APPLICABLE MUST REMAIN WITHIN DIMENSIONS | | | | | THIS DRAWING CONTAINS INFORMATION THAT IS PROPRIETARY TO MOLEX INCORPORATED AND SHOULD NOT BE USED WITHOUT WRITTEN PERMISSION | | | | | | | | | | | | | | | |

| | 13 | 12 | 11 | 10 | 9 | 8 | 7 | 6 | 5 | 4 | 3 | 2 | 1 | | | |
|---|-------------|---------------|-------------|-------------|----------------|-------------|----------------|----------------|----------------|-----------------|-----------------|----------------|-----------------|-----------------|----------------|----------------|
| J | PART NUMBER | DESCRIPTION | VOLTAGE KEY | PEG A | PEG B | PEG C | DIM. "P" | DIM. "S" | DIM. "T" | DIM. "V" | DIM. "W" | DIM. "X" | DIM. "Y" | DIM. "Z" | LATCH COLOR | TERMINAL TYPE |
| J | 71243-3001 | 1.8 VOLT VDDQ | CENTER | PLASTIC PEG | METAL FORKLOCK | PLASTIC PEG | .155 (3.94) | .020 (0.51) | .127 (3.23) | .135 (3.43) | .970 (24.64) | .113 (2.87) | .250 (6.35) | .410 (10.41) | WHITE | NOT LUBRICATED |
| | 71243-3002 | 2.5 VOLT VDDQ | OFFSET LEFT | PLASTIC PEG | METAL FORKLOCK | PLASTIC PEG | .155 (3.94) | .020 (0.51) | .127 (3.23) | .135 (3.43) | .970 (24.64) | .113 (2.87) | .250 (6.35) | .410 (10.41) | WHITE | NOT LUBRICATED |
| I | 71243-3004 | 1.8 VOLT VDDQ | CENTER | PLASTIC PEG | METAL FORKLOCK | PLASTIC PEG | .155 (3.94) | .020 (0.51) | .127 (3.23) | .135 (3.43) | .970 (24.64) | .113 (2.87) | .250 (6.35) | .410 (10.41) | WHITE | LUBRICATED |
| I | 71243-3005 | 2.5 VOLT VDDQ | OFFSET LEFT | PLASTIC PEG | METAL FORKLOCK | PLASTIC PEG | .155 (3.94) | .020 (0.51) | .127 (3.23) | .135 (3.43) | .970 (24.64) | .113 (2.87) | .250 (6.35) | .410 (10.41) | WHITE | LUBRICATED |
| | 71243-3007 | 2.5 VOLT VDDQ | OFFSET LEFT | PLASTIC PEG | NONE | PLASTIC PEG | .155 (3.94) | .020 (0.51) | .127 (3.23) | .970 (24.64) | .113 (2.87) | .250 (6.35) | .410 (10.41) | WHITE | NOT LUBRICATED | |
| | 71243-3009 | 1.8 VOLT VDDQ | CENTER | PLASTIC PEG | METAL FORKLOCK | PLASTIC PEG | .155 (3.94) | .020 (0.51) | .127 (3.23) | .135 (3.43) | .970 (24.64) | .113 (2.87) | .250 (6.35) | .410 (10.41) | BLACK | NOT LUBRICATED |



RECOMMENDED MODULE LAYOUT
184 CKT 3.3V SHOWN

- NOTES:
1. STRAIGHTNESS OF MODULE APPLIES TO THE AREA FROM THE BOTTOM OF THE CARD UP .157/(4.00).
 2. IF TIE BARS ARE ATTACHED TO PADS, THE TIE BAR SHOULD BE ON AN INTERNAL LAYER, SO THAT THE REMNANT CANNOT CAUSE DAMAGE TO THE CONTACTS.

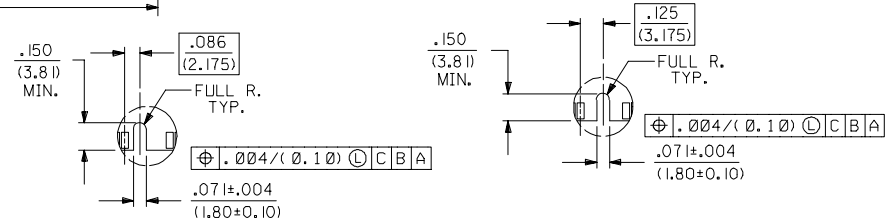
PLATING:

CONTACT AREA NOT LUBRICATED:
GOLD (Au) FLASH: THICKNESS=2-10 MICROINCH/(0.05-0.25 MICRO METER),
OVER PALLADIUM-NICKEL (Pd-NI): THICKNESS=30 MICROINCH/(0.76 MICROMETER) MINIMUM.

CONTACT AREA LUBRICATED:
MOLEX EBI LUBRICANT APPLIED OVER GOLD (Au) FLASH:
THICKNESS=2-10 MICROINCH/(0.05-0.25 MICRO METER),
OVER PALLADIUM-NICKEL (Pd-NI): THICKNESS=30 MICROINCH/(0.76 MICROMETER) MINIMUM.

SOLDER TAILS:
TIN (Sn): THICKNESS=150 MICROINCH/(3.81 MICROMETER) MINIMUM.

UNDERPLATE:
NICKEL (Ni) OVER ENTIRE TERMINAL.



| | | | | | | | |
|--------------------------------------------------------------------------------------------------------------------------------------|------------------------------------------------------|-------------------------------------------------------------------------------------------------------------------------------|-----------------|------------|----------------------|------------------------|--|
| ADD 71243-3009 EC NO: UCP2005-2368 DRWNSMART 2005/04/29 CHKDHSMART 2005/05/03 APPR:SMILLER 2005/05/05 REV DESCRIPTION | QUALITY SYMBOLS | GENERAL TOLERANCES (UNLESS SPECIFIED) | DIMENSION STYLE | SCALE | DESIGN UNITS | THIRD ANGLE PROJECTION | |
| | | mm INCH | IN/MM | 2:1 | INCH | | |
| | | 4 PLACES ± --- ± --- | DRAWN BY | DATE | TITLE | SALES ASSEMBLY | |
| | | 3 PLACES ± --- ± .005 | JCL | 09/25/1997 | | 0505/1.27 PITCH SINGLE | |
| | 2 PLACES ± 0.13 ± .01 | JCL | 09/25/1997 | | KEY 184 CKT DDR DIMM | | |
| | 1 PLACE ± 0.25 ± --- | JCL | 09/25/1997 | | MOLEX INCORPORATED | | |
| | ANGULAR ±1/2° | | | | | | |
| | DRAFT WHERE APPLICABLE MUST REMAIN WITHIN DIMENSIONS | MATERIAL NO. | DOCUMENT NO. | SHEET NO. | | | |
| | | SEE TABLE | SDA-71243-3*** | 2 OF 2 | | | |
| | | THIS DRAWING CONTAINS INFORMATION THAT IS PROPRIETARY TO MOLEX INCORPORATED AND SHOULD NOT BE USED WITHOUT WRITTEN PERMISSION | | | | | |