

**PLEASE CHECK WWW.MOLEX.COM FOR LATEST PART INFORMATION**

**Part Number:** **0190030044**  
**Status:** **Active**  
**Description:** InsulKrimp™ Quick Disconnect, Female, Box, Tab 6.35mm (.250") x 0.81mm (.032")

**Documents:**

[Drawing \(PDF\)](#) [RoHS Certificate of Compliance \(PDF\)](#)  
[Product Specification PS-19902-008 \(PDF\)](#)

**Agency Certification**

UL E79133

**General**

Product Family Quick Disconnects  
 Series [19003](#)  
 Comments Funnel Entry  
 Crimp Quality Equipment Yes  
 Product Name InsulKrimp™  
 Type Quick Disconnect

**Physical**

Barrel Type Closed  
 Color - Resin Natural  
 Flammability 94V-0  
 Gender Female  
 Glow-Wire Compliant No  
 Insulation Nylon (PA)  
 Lock to Mating Part None  
 Material - Metal Brass  
 Material - Plating Mating Tin  
 Material - Plating Termination Tin  
 Material - Resin Nylon  
 Orientation Straight  
 Packaging Type Bag  
 Plating min: Mating (µin) 160  
 Plating min: Mating (µm) 4  
 Plating min: Termination (µin) 160  
 Plating min: Termination (µm) 4  
 Polarized to Mating Part No  
 Tab Thickness 0.81mm (.032")  
 Tab Width 6.35mm (.250")  
 Temperature Range - Operating -65°C to +105°C  
 Termination Interface: Style Crimp or Compression  
 Wire Size AWG 14, 16

**Electrical**

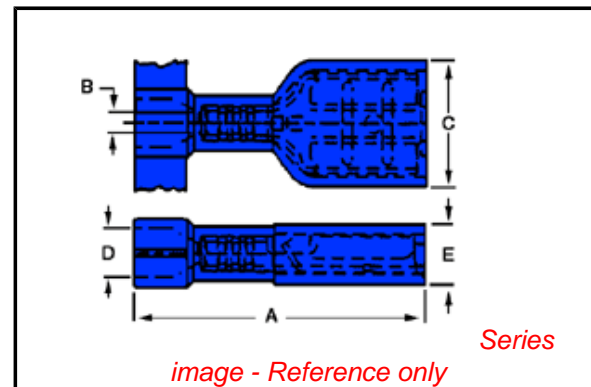
Voltage - Maximum 600V

**Material Info**

Old Part Number BB-2206VB

**Reference - Drawing Numbers**

Product Specification PS-19902-008  
 Sales Drawing SD-19003-002



**EU RoHS**

**ELV and RoHS Compliant**  
**REACH SVHC**  
 Not Reviewed  
**Halogen-Free Status**  
 Not Reviewed

**China RoHS**



**Need more information on product environmental compliance?**

Email [productcompliance@molex.com](mailto:productcompliance@molex.com)  
 For a multiple part number RoHS Certificate of Compliance, [click here](#)

Please visit the [Contact Us](#) section for any non-product compliance questions.

**Search Parts in this Series**

[19003Series](#)

**Application Tooling | FAQ**

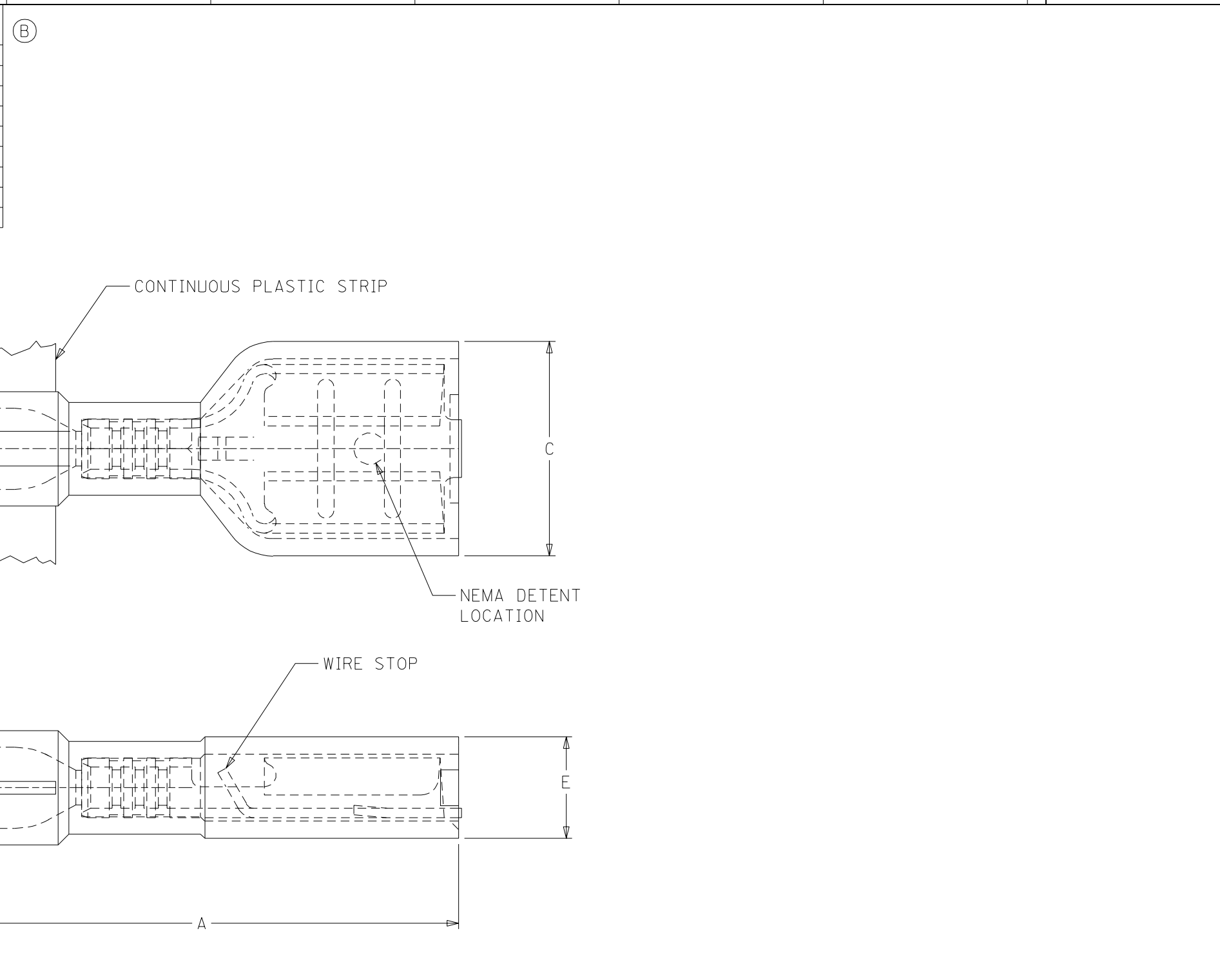
*Tooling specifications and manuals are found by selecting the products below. Crimp Height Specifications are then contained in the Application Tooling Specification document.*

**Global**

Description	Product #
Hand Crimp Tool	<a href="#">0640010400</a>
Hand Crimp Tool	<a href="#">0640011000</a>
Crimp Head for the AT-200™ Pneumatic Hand Tool	<a href="#">0640050400</a>
Crimp Head for the AT-200™ Pneumatic Hand Tool	<a href="#">0640051000</a>

**PLEASE CHECK [WWW.MOLEX.COM](http://WWW.MOLEX.COM) FOR LATEST PART INFORMATION**

MATERIAL NUMBER	ENGINEERING NUMBER	FITS MALE TAB SIZE	"A" MAX.	"C" MAX.	"E" MAX.	CARRIER CONFIGURATION
190030132	BB-2207V	.187X.020	.78/19.8	.316/8.03	.170/4.32	LOOSE PIECE
190030133	BB-2207VT	.187X.020	.78/19.8	.316/8.03	.170/4.32	TAPE MOUNT
190030134	BB-2207VC	.187X.020	.78/19.8	.316/8.03	.170/4.32	PLASTIC STRIP
190030135	BB-2208V	.187X.032	.78/19.8	.316/8.03	.170/4.32	LOOSE PIECE
190030136	BB-2208VT	.187X.032	.78/19.8	.316/8.03	.170/4.32	TAPE MOUNT
190030137	BB-2208VC	.187X.032	.78/19.8	.316/8.03	.170/4.32	PLASTIC STRIP
190030044	BB-2206VB	.250X.032	.86/21.8	.380/9.65	.180/4.57	LOOSE PIECE
190030080	BB-2206VBT	.250X.032	.86/21.8	.380/9.65	.180/4.57	TAPE MOUNT
190030045	BB-2206VBC	.250X.032	.86/21.8	.380/9.65	.180/4.57	PLASTIC STRIP



SALES DRAWING

NOTES:  
 (B) 1. MATERIAL: TERMINAL: BRASS .016/0.41  
 PLATING: ELECTRO-TIN  
 INSULATION: NYLON 6/6 94V-0 RATING  
 COLOR: BLUE.  
 2. MWID = MAXIMUM WIRE INSULATION DIAMETER  
 3. ALL DIMENSIONS = INCHES/MM

REV'D NYLON COLOR EC NO. ETC2004-0101 DRWN: BRE 03/11/21 CHK: HEB 03/11/21 APPR: RWD 03/11/21	QUALITY SYMBOLS MAJOR $\nabla=0$ CRITICAL $\nabla C=0$	GENERAL TOLERANCES: (UNLESS SPECIFIED)		SCALE NO: NE	DESIGN UNITS <input type="checkbox"/> mm <input checked="" type="checkbox"/> INCH	THIRD ANGLE PROJECTION	DIMENSIONS: <input type="checkbox"/> mm <input checked="" type="checkbox"/> INCH <input type="checkbox"/> mm ONLY	SHT	REV
		4 PLACES $\pm 0.---$	$\pm .---$	DRAWN BY & DATE HEB 01/06/07		TITLE: FIQD FEMALE, INSULKRIMP 94V-0 MATERIAL 16-14 AWG			
		3 PLACES $\pm 0.---$	$\pm .005$	CHECKED BY & DATE RWD 01/06/07		MOLEX INCORPORATED			
		2 PLACES $\pm 0.13$	$\pm .01$	APPROVED BY & DATE RWD 01/06/07		MATERIAL NO. SEE TABLE DRAWING NO. SD-19003-002 SHEET NO. 1 OF 1			
		1 PLACE $\pm 0.25$	$\pm .---$	ANGULAR: $\pm 1/2^\circ$		CAD FILENAME S19003002.DGN		THIS DRAWING CONTAINS INFORMATION THAT IS PROPRIETARY TO MOLEX INCORPORATED AND SHOULD NOT BE USED WITHOUT WRITTEN PERMISSION.	
B	REV	DRAFT WHERE APPLICABLE MUST REMAIN WITHIN DIMENSIONS						SIZE B	