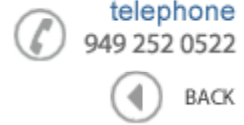




**Data Sheet**



Product Category: RF SAW Filter

|                  |               |             |               |
|------------------|---------------|-------------|---------------|
| Part Number      | Package       | Application | Last Modified |
| 800-RF1575.42M-G | 1.6 x 2.0 SMD | GPS         | Mar. 2, 2007  |

TYPE :  
GPS, RF SAW Filter

PART NUMBER :  
**800-RF1575.42M-G**

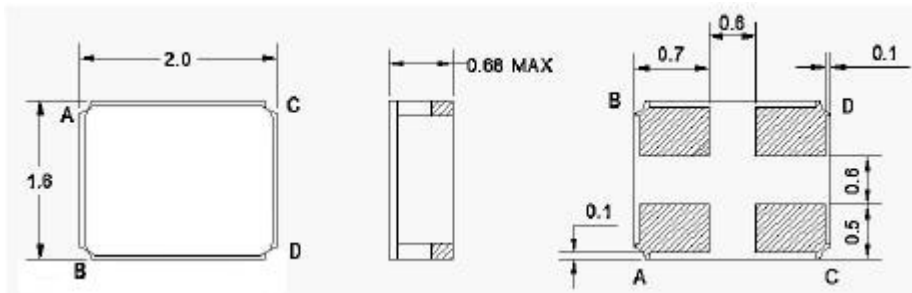


**OPERATING CONDITIONS / ELECTRICAL CHARACTERISTICS**

| PARAMETERS                       | Condition            | Minimum | Typical | Maximum | Units |
|----------------------------------|----------------------|---------|---------|---------|-------|
| Center Frequency (Fo)            | -                    | -       | 1575.42 | -       | MHz   |
| Maximum Insertion Loss           | 1574.42~ 1576.42 MHz | -       | 1.7     | 2.2     | dB    |
| Attenuation:                     | DC~ 1400.0 MHz       | 35      | 37      | -       | dB    |
|                                  | 1400.0~ 1475.0 MHz   | 35      | 38      | -       |       |
|                                  | 1475.0~ 1525.0MHz    | 30      | 35      | -       |       |
|                                  | 1625.0~ 1640.0 MHz   | 40      | 55      | -       |       |
|                                  | 1640.0~ 2000.0 MHz   | 35      | 40      | -       |       |
| 2000.0~ 3000.0 MHz               | 25                   | 29      | -       | -       |       |
| Source Impedance (single ended)* | -                    | -       | 50      | -       | ohm   |
| Load Impedance (single ended)*   | -                    | -       | 50      | -       | ohm   |
| VSWR                             | 1574.42~ 1576.42 MHz | -       | 1.15    | 2.0     | -     |
| Amplitude Ripple                 | 1574.42~ 1576.42 MHz | -       | 0.1     | 1.0     | dBp-p |
| Maximum DC Voltage               | -                    | -       | -       | 5       | V     |
| Maximum Input Power              | -                    | -       | -       | 10      | dBm   |
| Operating Temperature            | -                    | -40     | -       | +85     | °C    |

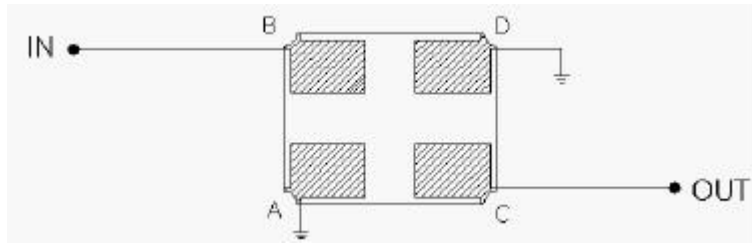
\* No Matching Network(Ref. Testing Enviroment Circuit as shown below)

**PACKAGE OUTLINE (mm)**



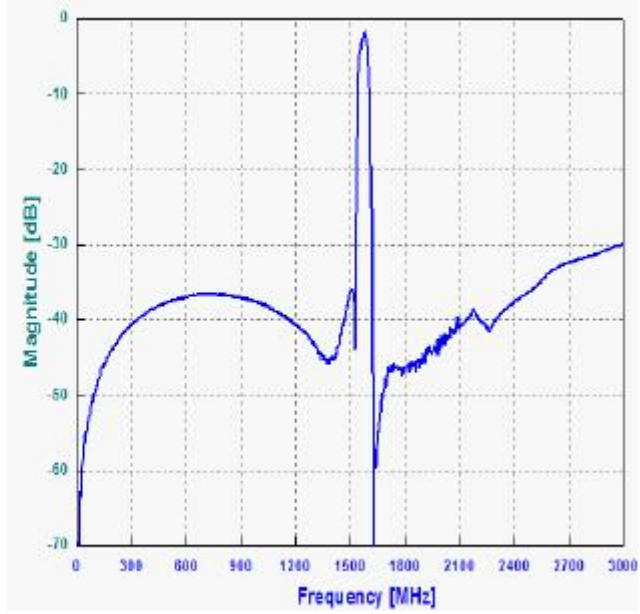
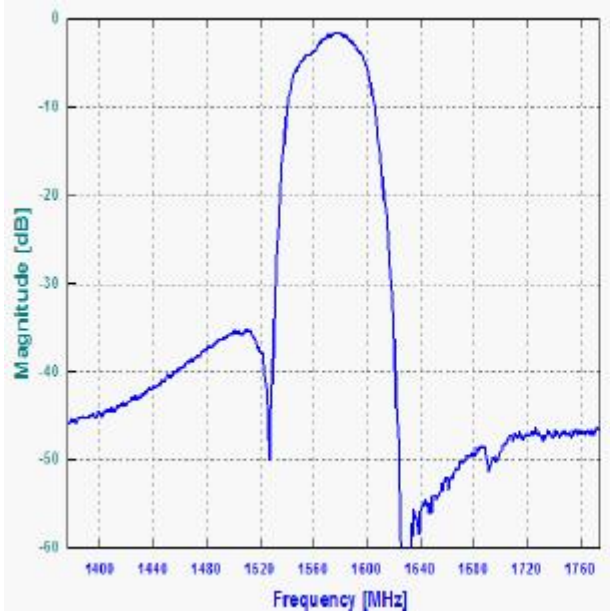
| PIN LAYOUT |        |
|------------|--------|
| A          | Ground |
| B          | In     |
| C          | Out    |
| D          | Ground |

**TEST FIXTURE**

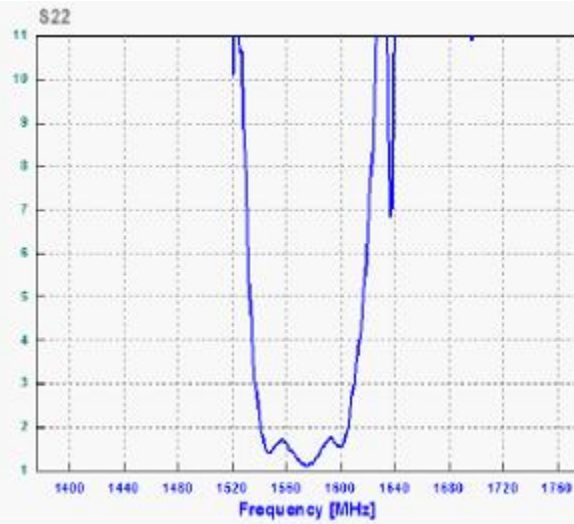
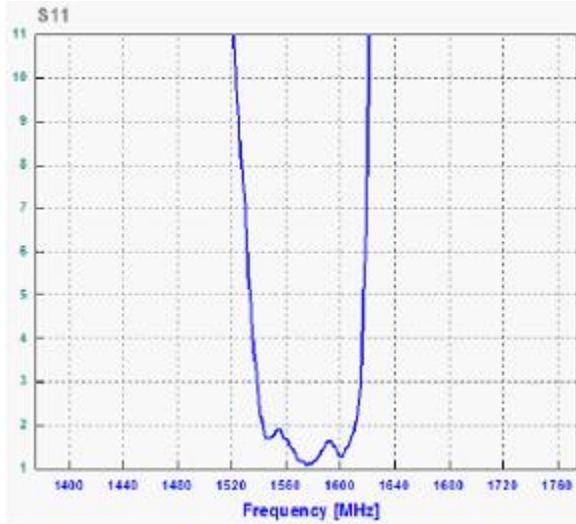


Load/ Source Impedance = 50 ohms

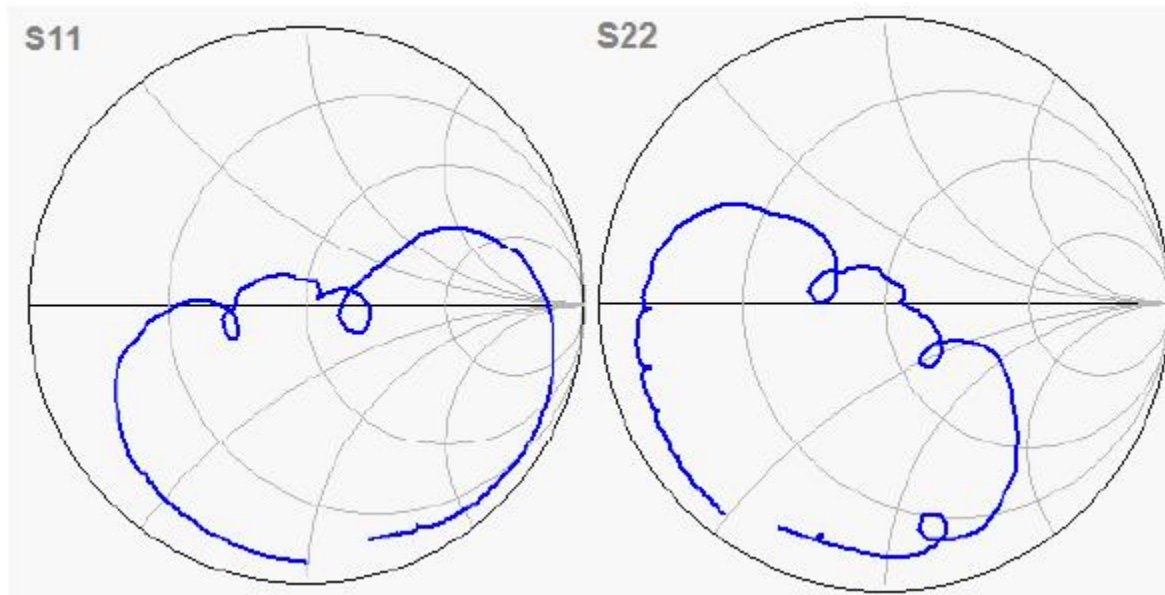
### FREQUENCY RESPONSE



### VSWR



### SMITH CHART



**Oscilent Corporation** - CALL **949.252.0522**

**Part No.:** 800-RF1575.42M-G

18195 East McDermott Street , Building D , Irvine , CA 92614 , USA  
Fax: 949.252.0599 , E-Mail: [Sales@Oscilent.com](mailto:Sales@Oscilent.com)