

PLEASE CHECK WWW.MOLEX.COM FOR LATEST PART INFORMATION

Part Number: [0430251600](#)
Status: **Active**
Overview: [microfit_30](#)
Description: 3.00mm (.118") Pitch Micro-Fit 3.0™ Receptacle Housing, Dual Row, 16 Circuits

Documents:

[3D Model](#) [Product Specification PS-43045 \(PDF\)](#)
[Drawing \(PDF\)](#) [RoHS Certificate of Compliance \(PDF\)](#)

Agency Certification

CSA	LR19980
TUV	R72081037
UL	E29179

General

Product Family	Crimp Housings
Series	43025
Comments	Glow Wire Equivalent Part Number 430251608 . Polarized to Mating Part
Overview	microfit_30
Product Literature Order No	USA-106
Product Name	Micro-Fit 3.0™

Physical

Circuits (maximum)	16
Circuits Detail	16
Color - Resin	Black
Flammability	94V-0
Gender	Female
Glow-Wire Compliant	No
Keying to Mating Part	None
Lock to Mating Part	Yes
Material - Resin	Polyester
Number of Rows	2
Packaging Type	Bag
Panel Mount	No
Pitch - Mating Interface (in)	0.118 In
Pitch - Mating Interface (mm)	3.00 mm
Polarized to Mating Part	Yes
Stackable	No
Temperature Range - Operating	-40°C to +105°C

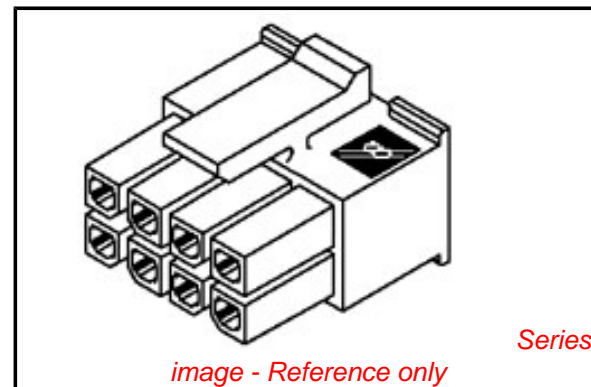
Electrical

Current - Maximum per Contact	5A
-------------------------------	----

Material Info

Reference - Drawing Numbers

Packaging Specification	PK-43025-001
Product Specification	PS-43045, RPS-43045-003, RPS-43045-004
Sales Drawing	SDA-43025-****
Test Summary	TS-43045-001



EU RoHS

ELV and RoHS Compliant
REACH SVHC
Contains SVHC: No
Halogen-Free Status

China RoHS



Not Halogen-Free

Need more information on product environmental compliance?

Email productcompliance@molex.com
 For a multiple part number RoHS Certificate of Compliance, [click here](#)

Please visit the [Contact Us](#) section for any non-product compliance questions.

Search Parts in this Series

[43025Series](#)

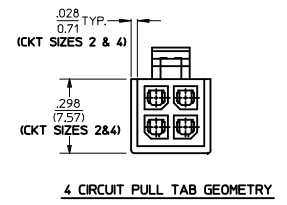
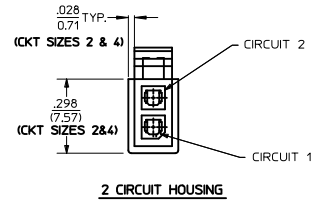
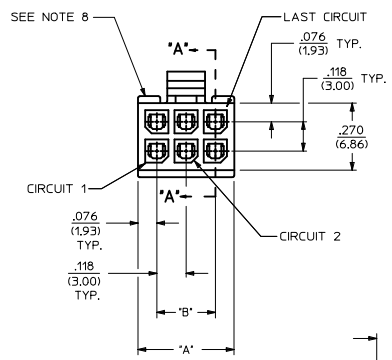
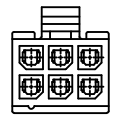
Mates With

Micro-Fit 3.0™ Plug Housing [43020](#). Micro-Fit 3.0™ Header [43045](#). Micro-Fit 3.0™ Test Plug [44242](#)

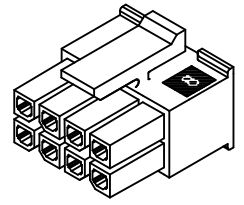
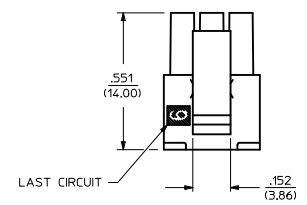
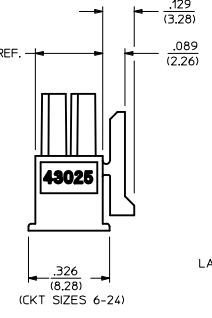
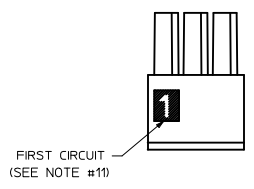
Use With

Micro-Fit 3.0™ Crimp Terminal [43030](#)

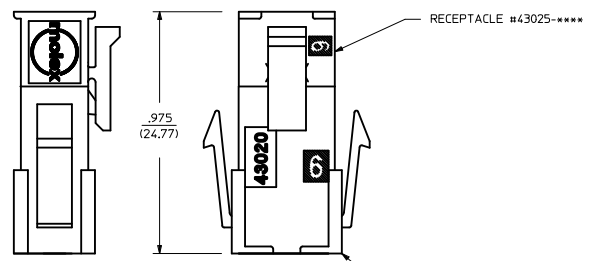
PART CHARACTERISTICS		CKT. NO.	DIM. 'A'	DIM. 'B'
NUMBER OF POSITION	ASSEMBLY ITEM NUMBER			
02	43025-0200	2	.152/(3.86)	N/A
04	43025-0400	4	.270/(6.85)	.118/(3.00)
06	43025-0600	6	.388/(9.85)	.236/(6.00)
08	43025-0800	8	.506/(12.85)	.354/(9.00)
10	43025-1000	10	.624/(15.85)	.472/(12.00)
12	43025-1200	12	.742/(18.85)	.591/(15.00)
14	43025-1400	14	.860/(21.85)	.709/(18.00)
16	43025-1600	16	.978/(24.85)	.827/(21.00)
18	43025-1800	18	1.096/(27.85)	.945/(24.00)
20	43025-2000	20	1.215/(30.85)	1.063/(27.00)
22	43025-2200	22	1.333/(33.85)	1.181/(30.00)
24	43025-2400	24	1.451/(36.85)	1.299/(33.00)



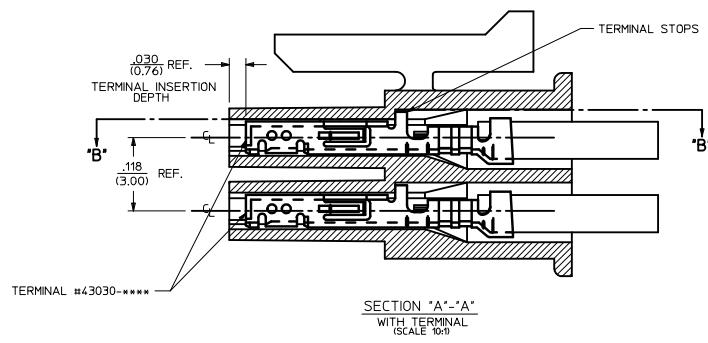
HOUSING SHOWN WITH OPTIONAL FIRST CIRCUIT IDENTIFIER RIB (SEE NOTE #11)



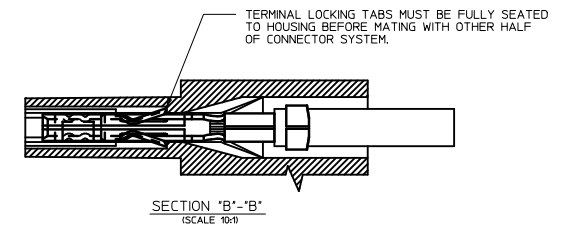
RECEPTACLE ISO VIEW (8 CIRCUIT SHOWN) (SEE NOTE 9 FOR TESTING)



MATED MICRO-FIT CONNECTOR



SECTION "A"-A' WITH TERMINAL (SCALE 10:1)



SECTION "B"-B' (SCALE 10:1)

NOTES:
 1) HOUSING MATERIAL: UNFILLED POLYESTER, RATED UL, 94V-0, COLOR IS BLACK.
 2) FINISH: N/A
 3) PRODUCT SPECIFICATION: PS-43045
 4) PACKAGING SPECIFICATION: PK-43025-001
 5) THIS RECEPTACLE MATES WITH 43020, 43045.
 6) THIS RECEPTACLE TO BE USED WITH MOLEX FEMALE TERMINAL #43030-****. SEE SECTION "A"-A' FOR TERMINAL ORIENTATION IN HOUSING.
 7) FOR OVERMOLDING PARAMETERS SEE ENGINEERING SPECIFICATION #SDS-43025-1000.
 8) TOP PULL TABS ARE NOT AVAILABLE ON 2 AND 4 CIRCUIT PARTS.
 9) MOLEX RECOMMENDS THE USE OF MICRO-FIT TEST PLUG, SERIES NO. 44242-**** WHENEVER TESTING IS PERFORMED. TEST PLUGS MUST NOT BE USED FOR MAKE OR BREAK UNDER LOAD. MOLEX DOES NOT RECOMMEND USING STANDARD MATING COMPONENTS FOR HARNESS TESTING PURPOSES.
 10) SOME HOUSINGS MAY HAVE A SMALL GATE BLEMISH NEAR THE GATE THAT DOES NOT AFFECT FUNCTIONALITY.
 11) HOUSINGS MAY HAVE EITHER AN IDENTIFIER RIB OR "1" SYMBOL ENGRAVE TO INDICATE CIRCUIT #1.
 12) THIS PART CONFORMS TO CLASS 'B' REQUIREMENTS OF COSMETIC SPECIFICATION PS-45499-002.

ADD PK SPEC. NOTES EC NO: UCP2010-0075 DPC/MAS/SOISEK 2009/11/18 CHKD: BELL 2009/11/25 APPR: SMITH 2009/11/30 M1	QUALITY SYMBOLS ▽=0 ▽=0	GENERAL TOLERANCES (UNLESS SPECIFIED)		DIMENSION STYLE IN/MM		SCALE 4:1	DESIGN UNITS METRIC	THIRD ANGLE PROJECTION	
		4 PLACES ± ±	3 PLACES ± --- ± .010	DRAWN BY A. F. G.	DATE 1993/01/14	TITLE MICRO-FIT (3.0) 2 THRU 24 CIRCUIT RECEPTACLE			
		2 PLACES ± 0.25 ± .014	1 PLACE ± 0.35 ± ---	CHECKED BY B. A. P.	DATE 1993/01/14	MOLEX INCORPORATED			
		ANGULAR ±1/2°		APPROVED BY R. A. S.	DATE 1993/01/14	DOCUMENT NO. SDA-43025-****			
DRAFT WHERE APPLICABLE MUST REMAIN WITHIN DIMENSIONS		SEE CHART		MATERIAL NO.		SHEET NO. 1 OF 1		THIS DRAWING CONTAINS INFORMATION THAT IS PROPRIETARY TO MOLEX INCORPORATED AND SHOULD NOT BE USED WITHOUT WRITTEN PERMISSION	