

**PLEASE CHECK WWW.MOLEX.COM FOR LATEST PART INFORMATION**

**Part Number:** [0850133160](#)  
**Status:** **Active**  
**Overview:** [din\\_41612](#)  
**Description:** 2.54mm (.100") Pitch DIN 41612 Header, Through Hole, Vertical, Style R Reverse, 1µm (40µ") Selective Gold (Au), 32 Circuits, Lead free

**Documents:**

<a href="#">3D Model</a>	<a href="#">Product Specification PS-85013-0001 (PDF)</a>
<a href="#">Drawing (PDF)</a>	<a href="#">RoHS Certificate of Compliance (PDF)</a>

**Agency Certification**

CSA	LR19980
UL	E29179

**General**

Product Family	Backplane Connectors
Series	<a href="#">85013</a>
Application	Daughtercard
Component Type	PCB Header
Overview	<a href="#">din_41612</a>
Product Name	IEC 603-2/DIN 41612
Style	R

**Physical**

Circuits (Loaded)	32
Circuits (maximum)	96
Circuits Detail	Rows A & C
Durability (mating cycles max)	500
First Mate / Last Break	No
Flammability	94V-0
Guide to Mating Part	No
Keying to Mating Part	Yes
Number of Columns	16
Number of Pairs	Open Pin Field
Number of Rows	3
Orientation	Vertical
PC Tail Length (in)	0.177 In
PC Tail Length (mm)	4.50 mm
PCB Locator	No
PCB Retention	Yes
Packaging Type	Tray
Pitch - Mating Interface (in)	0.100 In
Pitch - Mating Interface (mm)	2.54 mm
Pitch - Term. Interface (in)	0.100 In
Pitch - Term. Interface (mm)	2.54 mm
Plating min: Mating (µin)	39
Plating min: Mating (µm)	1
Polarized to PCB	No
Stackable	No
Surface Mount Compatible (SMC)	No
Temperature Range - Operating	-55°C to +125°C

**Electrical**

Current - Maximum per Contact	2.5A
Data Rate	622.0 Mbps
Real Signals (per 25mm)	30

**EU RoHS**  
**ELV and RoHS**  
**Compliant**  
**REACH SVHC**  
 Not Reviewed  
**Halogen-Free**  
**Status**  
**Not Reviewed**

**China RoHS**



**Need more information on product environmental compliance?**

Email [productcompliance@molex.com](mailto:productcompliance@molex.com)  
 For a multiple part number RoHS Certificate of Compliance, [click here](#)

Please visit the [Contact Us](#) section for any non-product compliance questions.

**Search Parts in this Series**  
[85013Series](#)

**Mates With**  
[85042](#) , [85052](#) Backplane Header

Shield Type	N/A
Shielded	No
Voltage - Maximum	1000V (RMS)

**Solder Process Data**

Duration at Max. Process Temperature (seconds)	10
Lead-free Process Capability	Wave Capable (TH only)
Process Temperature max. C	260

**Material Info****Reference - Drawing Numbers**

Product Specification	PS-85013-0001
Sales Drawing	SD-85013-3160, SDA-85013-0001, SDA-85013-3160

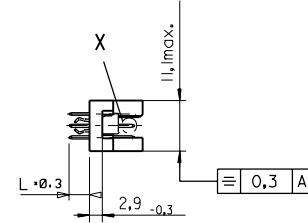
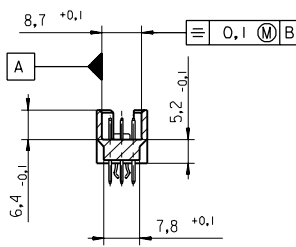
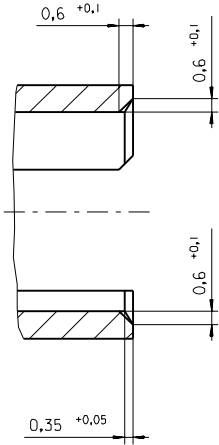
This document was generated on 05/17/2010

**PLEASE CHECK [WWW.MOLEX.COM](http://WWW.MOLEX.COM) FOR LATEST PART INFORMATION**

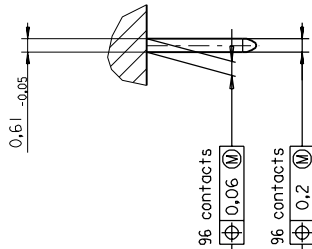


PART NO.  
DWG. NO.

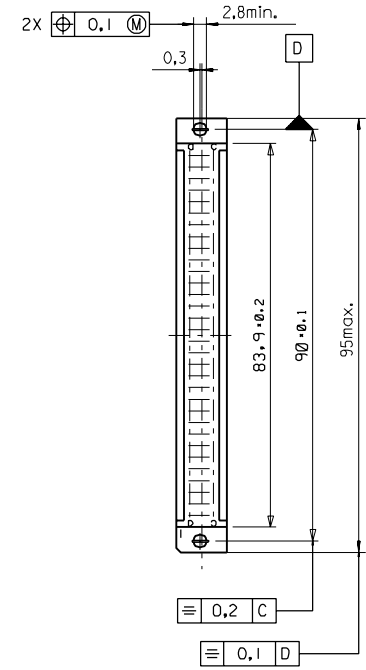
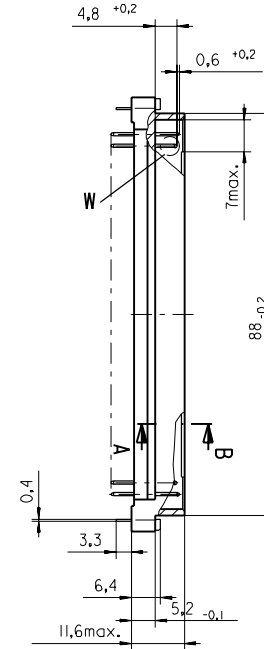
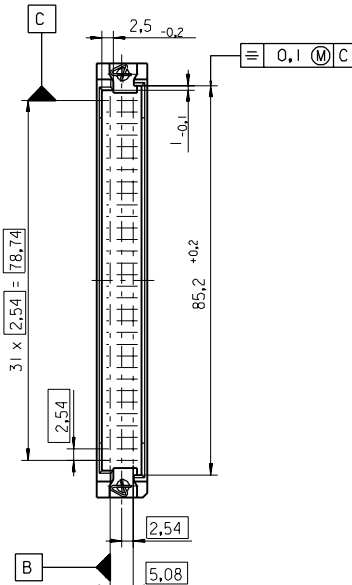
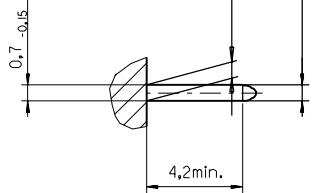
Section A - B  
5:1



View X  
5:1



View W  
5:1



FIRST ANGLE PROJECTION		REVISE ONLY ON CAD SYSTEM		SH.	REV.
UNLESS OTHERWISE SPECIFIED TOLERANCES: ANGULAR ±2°	INCH	DRWG BY	SIGN	CAD/CAM PROJECT NAME	
	METRIC	Ca		85013000	THIS DRAWING CONTAINS INFORMATION THAT IS PROPRIETARY TO MOLEX INC. & SHOULD NOT BE USED WITHOUT WRITTEN PERMISSION
3 PLACE ± .	±	CHK'D BY	SIGN	TITLE	
2 PLACE ± .	±	KN		96 pos. Male connector acc. DIN 41612 Style R Dimensions	
1 PLACE ± .	±	APP'D BY	SIGN	MOLEX EUROPE	
DRAFT WHERE APPLICABLE MUST REMAIN WITHIN DIMENSIONS		SCALE		SHEET NO.	DATE
DESIGN DIMENSION <input checked="" type="checkbox"/> MM		: 1		1 OF	95/06/07
EQUIVALENT DIMENSION <input type="checkbox"/> MM				PART NO.	
EQUIVALENT DIMENSION <input type="checkbox"/> IN.				DWG NO.	
IF TWO DIMENSIONS ARE SHOWN THE UPPER IS THE DESIGN DIMENSION, LOWER IS SECONDARY				SDA-85013-0001	
				SIZE	
				B	

VIEW ON MATING SIDE

U	A	A	A	A	A	A	A	A	A	A	A	A	A	A	A	A	A	A	A	A
W																				
X	A	A	A	A	A	A	A	A	A	A	A	A	A	A	A	A	A	A	A	A

1 2 3 4 5 6 7 8 9 10 11 12 13 14 15 16 17 18 19 20 21 22 23 24 25 26 27 28 29 30 31 32

A = 32 STANDARD CONTACTS L=4,5

Marking	Standard
Performance level	G2/0 = Contact area perform. level2 / Termination tin
Flux proof	no
Fixing clip	no
Dimensions	SDA-85013-0001 sht.1
Technical Data	PS-85013-0001

A	G2/0	α2,4,6....32, c2,4,6....32
Contact symbol	Perform. level	Contact position number

first release see ECN No. 2463	REVISIONS		FOR PREVIOUS REVISIONS SEE MRI LIST	
	LTR	REVISIONS		
UNLESS OTHERWISE SPECIFIED TOLERANCES: ANGULAR ± 2°		DRWG BY	CC	SIGN
INCH		CHK'D BY	KN	SIGN
METRIC		APP'D BY	JB	SIGN
3 PLACE ± .	±	SCALE		
2 PLACE ± .	±	DESIGN DIMENSION <input type="checkbox"/> MM <input type="checkbox"/> IN.		
1 PLACE ± .	±	EQUIVALENT DIMENSION <input type="checkbox"/> MM <input type="checkbox"/> IN.		
DRAFT WHERE APPLICABLE MUST REMAIN WITHIN DIMENSIONS		IF TWO DIMENSIONS ARE SHOWN, THE UPPER IS THE DESIGN DIMENSION, LOWER IS SECONDARY		
REVISE ONLY ON CAD SYSTEM		SH. REV.		
CAD/CAM PROJECT NAME		THIS DRAWING CONTAINS PROPRIETARY TO MOLEX INC. & SHOULD NOT BE USED WITHOUT WRITTEN PERMISSION		
TITLE		SHEET NO.		DATE
96 pos. Male connector acc. DIN 41612 style R contacts arrangement		1 OF 1		97/04/21
MOLEX EUROPE		DWG NO.		SIZE
85013-3160		SDA-85013-3160		A