

PLEASE CHECK WWW.MOLEX.COM FOR LATEST PART INFORMATION

Part Number: **0684250685**
Status: **Planned for Obsolescence**
Description: 4.95mm (.195") Pitch Wire-to-Board Receptacle Housing, with Positive Latch, 6 Circuits, Blue, Voids 1, 3, 5

Documents:

[Drawing \(PDF\)](#) [RoHS Certificate of Compliance \(PDF\)](#)
[Product Specification PS-68187-002 \(PDF\)](#)

General

Product Family	Crimp Housings
Series	<u>68425</u>
Product Name	N/A

Physical

Circuits (maximum)	6
Gender	Female
Glow-Wire Compliant	No
Lock to Mating Part	Yes
Number of Rows	2
Packaging Type	Bag
Panel Mount	No
Pitch - Mating Interface (in)	0.195 In
Pitch - Mating Interface (mm)	4.95 mm
Polarized to Mating Part	Yes
Stackable	No
Temperature Range - Operating	-40°C to +120°C

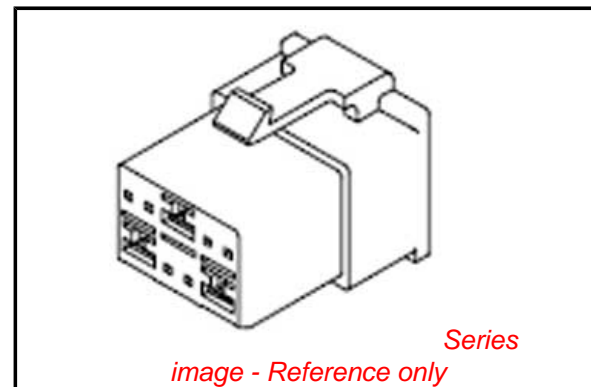
Electrical

Current - Maximum per Contact	5A
-------------------------------	----

Material Info

Reference - Drawing Numbers

Packaging Specification	PK-68425-002
Product Specification	PS-68187-002
Sales Drawing	SD-68425-003



EU RoHS

ELV and RoHS Compliant
REACH SVHC
 Not Reviewed
Halogen-Free Status
 Not Reviewed

China RoHS



Need more information on product environmental compliance?

Email productcompliance@molex.com
 For a multiple part number RoHS Certificate of Compliance, [click here](#)

Please visit the [Contact Us](#) section for any non-product compliance questions.

Search Parts in this Series

68425Series

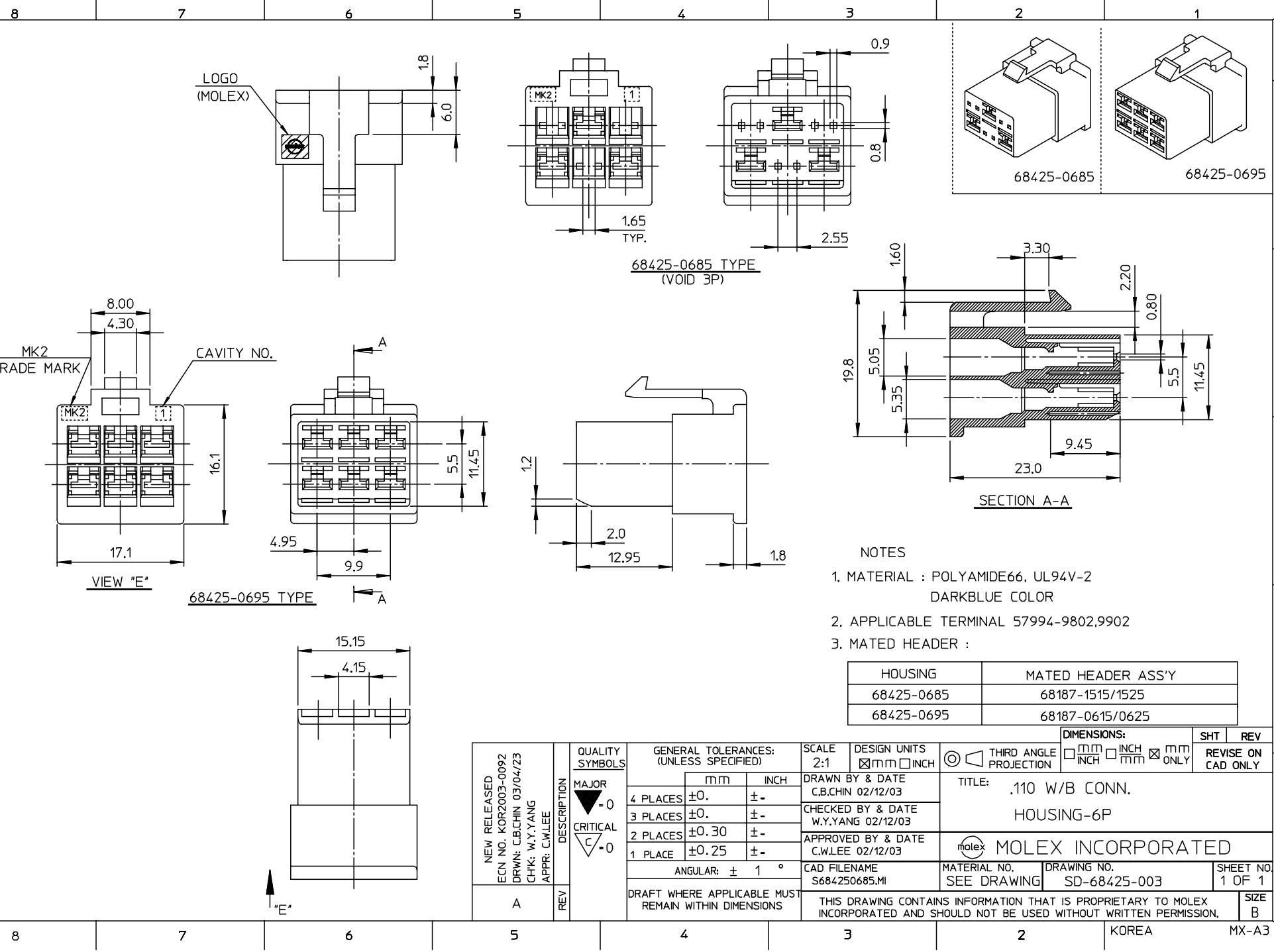
Mates With

68187 PCB Header

Use With

57994 Terminal

DWG. NO. SD-68425-003
 SIMILAR ITEM
 PROJECT NO.
 DO NOT SCALE DRAWING
 DIMENSION IN METRIC



- NOTES
- MATERIAL : POLYAMIDE66, UL94V-2
DARKBLUE COLOR
 - APPLICABLE TERMINAL 57994-9802,9902
 - MATED HEADER :

HOUSING	MATED HEADER ASS'Y
68425-0685	68187-1515/1525
68425-0695	68187-0615/0625

NEW RELEASED ECN NO. KOR2003-0092 DRWN: C.B.CHIN 03/04/23 CHK: W.Y.YANG APPR: C.W.LEE	QUALITY SYMBOLS MAJOR \blacktriangledown = 0 CRITICAL ∇ = 0	GENERAL TOLERANCES: (UNLESS SPECIFIED)		SCALE 2:1	DESIGN UNITS <input checked="" type="checkbox"/> mm <input type="checkbox"/> INCH	<input checked="" type="checkbox"/> THIRD ANGLE PROJECTION	DIMENSIONS: <input type="checkbox"/> mm <input type="checkbox"/> INCH <input checked="" type="checkbox"/> mm ONLY		SHT	REV
		4 PLACES	$\pm 0.$	$\pm -$	DRAWN BY & DATE C.B.CHIN 02/12/03		TITLE: .110 W/B CONN. HOUSING-6P			
		3 PLACES	$\pm 0.$	$\pm -$	CHECKED BY & DATE W.Y.YANG 02/12/03		MOLEX INCORPORATED			
		2 PLACES	± 0.30	$\pm -$	APPROVED BY & DATE C.W.LEE 02/12/03					
1 PLACE	± 0.25	$\pm -$	ANGULAR: $\pm 1^\circ$		CAD FILENAME S684250685.MI	MATERIAL NO. SEE DRAWING	DRAWING NO. SD-68425-003	SHEET NO. 1 OF 1		
REV		DESCRIPTION		DRAFT WHERE APPLICABLE MUST REMAIN WITHIN DIMENSIONS		THIS DRAWING CONTAINS INFORMATION THAT IS PROPRIETARY TO MOLEX INCORPORATED AND SHOULD NOT BE USED WITHOUT WRITTEN PERMISSION.				SIZE B