

PLEASE CHECK WWW.MOLEX.COM FOR LATEST PART INFORMATION

Part Number: [1044668002](#)
Status: **Active**
Description: 2.00mm (.079") Pitch Wire-to-Board Crimp Terminal, Reel

Documents:

[Drawing \(PDF\)](#) [RoHS Certificate of Compliance \(PDF\)](#)
[Product Specification PS-104046-001 \(PDF\)](#)

General

Product Family Crimp Terminals
 Series [104466](#)
 Crimp Quality Equipment Yes
 Product Name N/A

Physical

Durability (mating cycles max) 30
 Gender Receptacle
 Material - Metal Phosphor Bronze
 Material - Plating Mating Tin
 Material - Plating Termination Tin
 Packaging Type Reel
 Termination Interface: Style Crimp or Compression
 Wire Insulation Diameter 1.0mm max.
 Wire Size AWG 28, 30
 Wire Size mm² N/A

Electrical

Current - Maximum per Contact 1A
 Voltage - Maximum 250V AC (RMS)/DC

Material Info

Reference - Drawing Numbers

Product Specification PS-104046-001
 Sales Drawing SD-104466-001

EU RoHS

**ELV and RoHS
Compliant**

REACH SVHC

Contains SVHC: No

**Halogen-Free
Status**

Halogen-Free

China RoHS



**Need more information on product
environmental compliance?**

Email productcompliance@molex.com
 For a multiple part number RoHS Certificate of
 Compliance, [click here](#)

Please visit the [Contact Us](#) section for any
 non-product compliance questions.

Search Parts in this Series

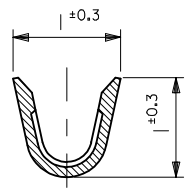
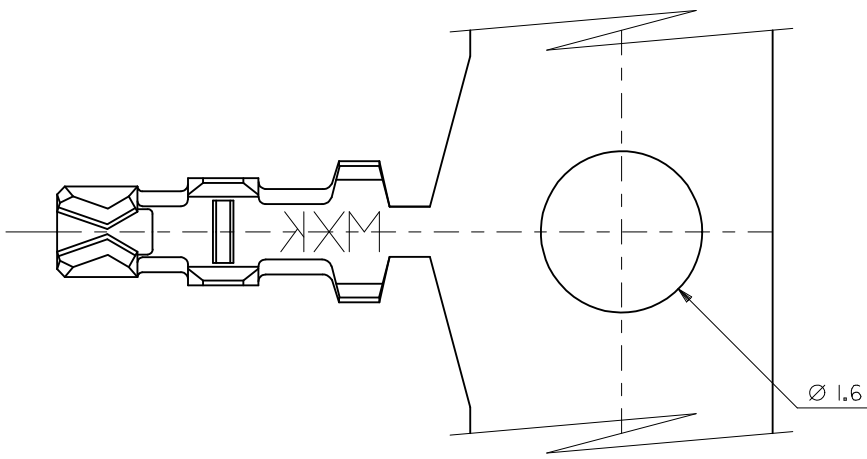
[104466Series](#)

Mates With

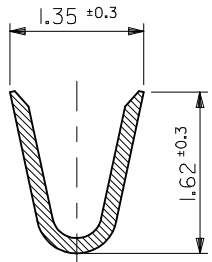
[104046 PCB Header](#)

Use With

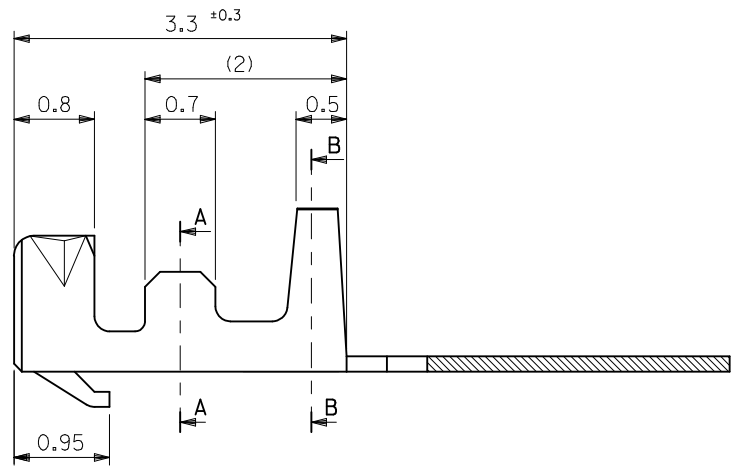
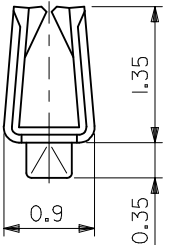
[104047 Crimp Housing](#)



SECT. A-A



SECT. B-B



- NOTES**
1. MATERIAL : PHOSPHOR BRONZE, 0.152mm THICKNESS
 2. PLATING : TIN(Sn)0.9μm MINIMUM. PRE-PLATED
 3. APPLICABLE HOUSING : 104047-0490
 4. APPLICABLE WIRE RANGE : AWG#28 -AWG#30

NEW RELEASED EC NO: KOR2010-0066 DRWN:CBCHN 2009/10/15 CHKD:WYANG 2009/10/20 APPR:YUNSIKKIM 2009/10/21	DESCRIPTION REV	QUALITY SYMBOLS	GENERAL TOLERANCES (UNLESS SPECIFIED)	DIMENSION STYLE	SCALE	DESIGN UNITS	THIRD ANGLE PROJECTION
		▼=0 ◻=0	mm INCH	MM ONLY	1:1	METRIC	
		4 PLACES ± --- ± --- 3 PLACES ± --- ± --- 2 PLACES ± 0.3 ± --- 1 PLACE ± 0.3 ± ---	DRAWN BY SK.HAN CHECKED BY WY.YANG APPROVED BY WY.YANG DATE 2009/03/17 DATE 2009/03/17 DATE 2009/03/17	TITLE	1.25/2.0MM W/B CONN. CRIMP REC' TERMINAL		
		ANGULAR ± 3 ° DRAFT WHERE APPLICABLE MUST REMAIN WITHIN DIMENSIONS	MATERIAL NO. 1044668002 SIZE A3 THIS DRAWING CONTAINS INFORMATION THAT IS PROPRIETARY TO MOLEX INCORPORATED AND SHOULD NOT BE USED WITHOUT WRITTEN PERMISSION	MOLEX INCORPORATED DOCUMENT NO. SD-104466-001 SHEET NO. 1 OF 01			