

**PLEASE CHECK WWW.MOLEX.COM FOR LATEST PART INFORMATION**

**Part Number:** [0476622000](#)  
**Status:** **Active**  
**Overview:** [slimline serial ata odd connectors](#)  
**Description:** 1.27mm (.050") Pitch Removable Slimline Serial ATA Header for Optical Disk Drive, Vertical, Through Hole, DIP Type, Gold (Au) Flash Plating, with Beveled Metal Pins, with Cap, Lead-free

**Documents:**

[3D Model](#) [Product Specification PS-47657-001 \(PDF\)](#)  
[Drawing \(PDF\)](#) [RoHS Certificate of Compliance \(PDF\)](#)

**General**

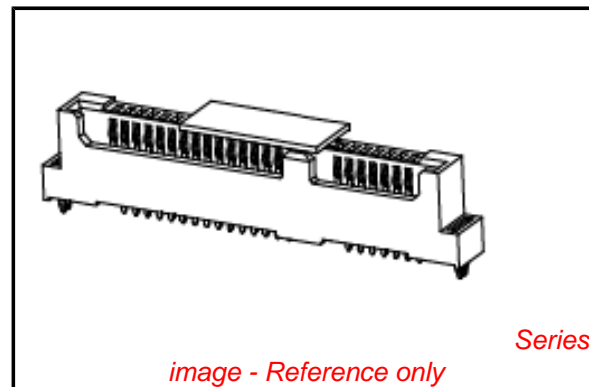
Product Family	PCB Headers
Series	<a href="#">47662</a>
Application	Board-to-Board
Overview	<a href="#">slimline serial ata odd connectors</a>
Product Name	Serial ATA, Slimline Serial ATA

**Physical**

Breakaway	No
Circuits (Loaded)	22
Circuits (maximum)	22
Color - Resin	Black
Durability (mating cycles max)	500
First Mate / Last Break	No
Glow-Wire Compliant	No
Guide to Mating Part	Yes
Keying to Mating Part	Yes
Lock to Mating Part	No
Material - Metal	Copper Alloy
Material - Plating Mating	Gold
Material - Plating Termination	Tin
Material - Resin	High Temperature Thermoplastic
Number of Rows	1
Orientation	Vertical
PCB Locator	No
PCB Retention	Yes
PCB Thickness Recommended (in)	0.050 In
PCB Thickness Recommended (mm)	1.20 mm
Packaging Type	Embossed Tape on Reel
Pitch - Mating Interface (in)	0.050 In
Pitch - Mating Interface (mm)	1.27 mm
Pitch - Term. Interface (in)	0.050 In
Pitch - Term. Interface (mm)	1.27 mm
Plating min: Mating (µin)	2
Plating min: Mating (µm)	0.05
Polarized to Mating Part	Yes
Polarized to PCB	Yes
Stackable	No
Temperature Range - Operating	-35°C to +85°C
Termination Interface: Style	Through Hole

**Electrical**

Current - Maximum per Contact	1.5A
Voltage - Maximum	15V DC



**EU RoHS**

**ELV and RoHS Compliant**  
**REACH SVHC**  
**Contains SVHC: No**  
**Halogen-Free Status**

**China RoHS**



**Not Halogen-Free**  
**Need more information on product environmental compliance?**

Email [productcompliance@molex.com](mailto:productcompliance@molex.com)  
 For a multiple part number RoHS Certificate of Compliance, [click here](#)

Please visit the [Contact Us](#) section for any non-product compliance questions.

**Search Parts in this Series**  
[47662Series](#)

**Solder Process Data**

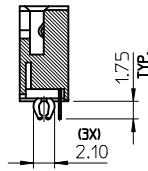
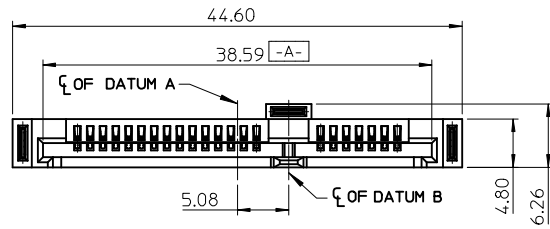
Duration at Max. Process Temperature (seconds)	10
Lead-free Process Capability	Reflow Capable (SMT only)
Max. Cycles at Max. Process Temperature	1
Process Temperature max. C	260

**Material Info****Reference - Drawing Numbers**

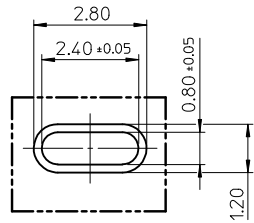
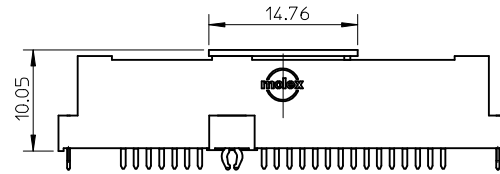
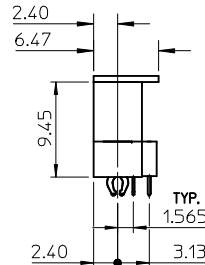
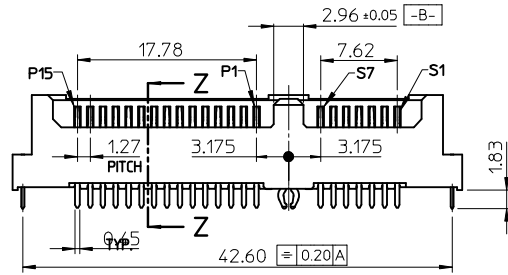
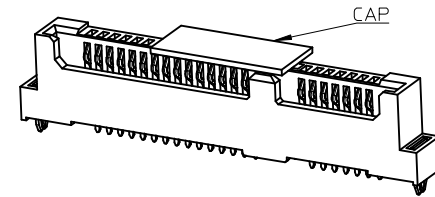
Packaging Specification	PK-47662-002
Product Specification	PS-47657-001
Sales Drawing	SD-47662-100

This document was generated on 05/26/2010

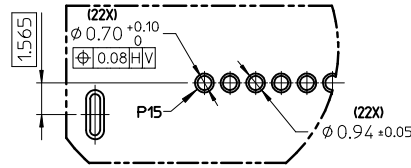
**PLEASE CHECK [WWW.MOLEX.COM](http://WWW.MOLEX.COM) FOR LATEST PART INFORMATION**



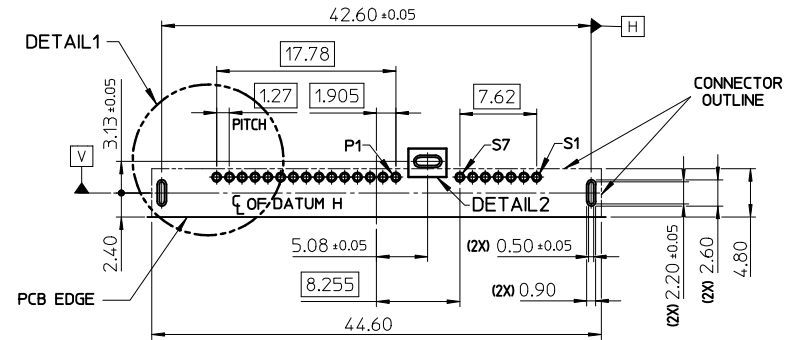
SECTION Z-Z



DETAIL 2



DETAIL 1

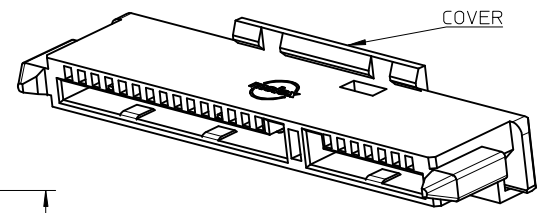
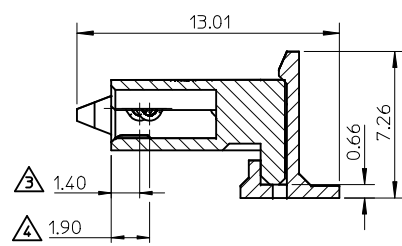
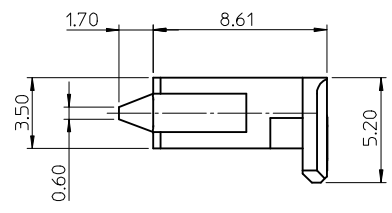
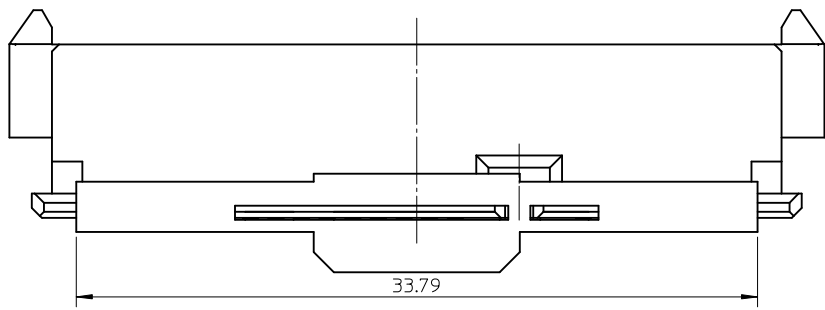
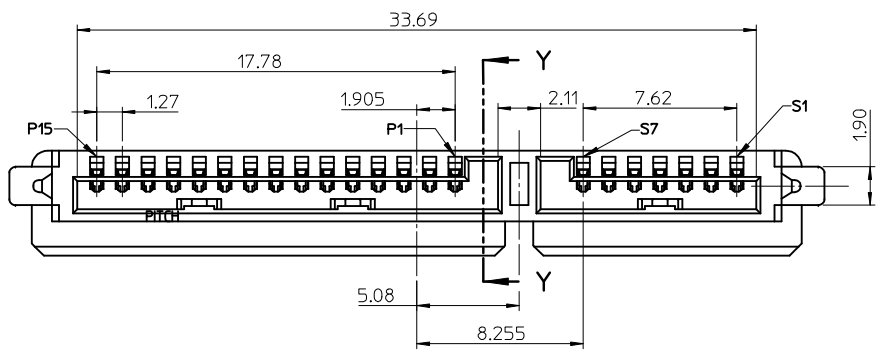
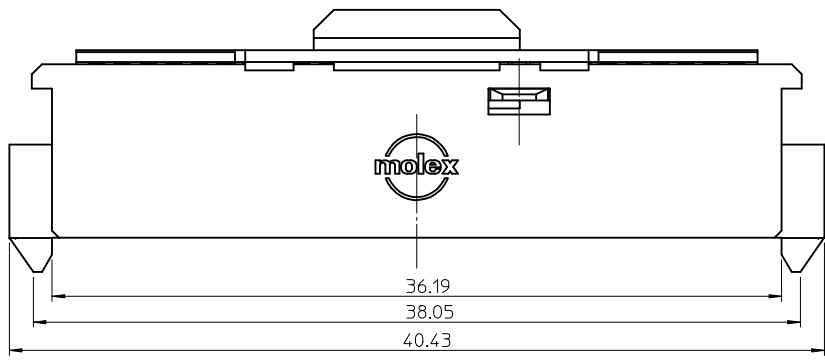


- NOTES :
- MATERIAL :  
HOUSING : HIGH TEMPERATURE THERMOPLASTIC, UL94V-0, BLACK  
TERMINAL : COPPER ALLOY  
NUT : COPPER ALLOY
  - PLATING :  
TERMINAL :  
CONTACT AREA : GOLD PLATING.  
SOLDER AREA : MATTE TIN PLATING.  
UNDERPLATING : NICKEL PLATING.  
NUT :  
NICKEL PLATING 1.25 MICROMETER MIN OVER ALL.
  - PRODUCT SPEC: PS-47657-001.
  - COMPLIANT TO RoHS DIRECTIVE 2002/95/EC AND ELV 2000/53/EC.

P/N	CONTACT GOLD PLATING SPEC
47662-2000	Au FLASH
47662-2001	Au 15u" MIN
47662-2002	Au 30u" MIN

**RECOMMENDED PCB LAYOUT**  
(PCB THICKNESS=1.2MM ± 0.05MM)

<b>NEW RELEASE</b> EC NO: SH2010-0016 DRW:GLL CHKD:XJ SONG APPR:RZHANG 2009/08/27	QUALITY SYMBOLS ▽=0 ◻=0	GENERAL TOLERANCES (UNLESS SPECIFIED)		DIMENSION STYLE	SCALE	DESIGN UNITS	THIRD ANGLE PROJECTION	
		mm	INCH	MM ONLY	2:1	METRIC	⊙ □	
		4 PLACES ± --- ± ---	3 PLACES ± --- ± ---	DRAWN BY	DATE	TITLE	REMOVABLE SATA 22 PINS RESERVE DIP TYPE HEADER	
		2 PLACES ± 0.20 ± ---	1 PLACE ± 0.25 ± ---	CHECKED BY	DATE	MOLEX INCORPORATED		
ANGULAR ± 3 °		DRAFT WHERE APPLICABLE MUST REMAIN WITHIN DIMENSIONS		APPROVED BY	DATE	MATERIAL NO.	SHEET NO.	
				HARVEY WANG	2008/12/24	SEE CHART	SD-47662-100	
				THIS DRAWING CONTAINS INFORMATION THAT IS PROPRIETARY TO MOLEX INCORPORATED AND SHOULD NOT BE USED WITHOUT WRITTEN PERMISSION				



NOTES :

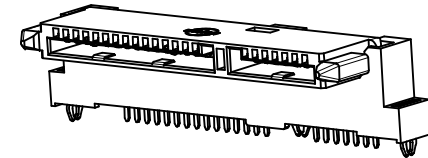
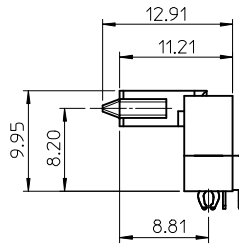
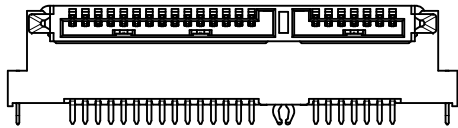
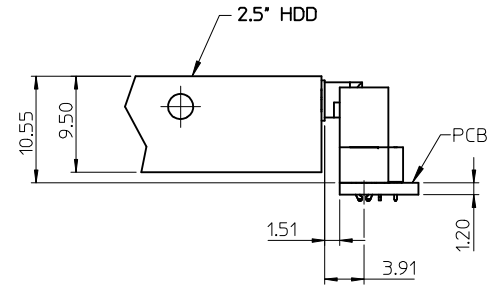
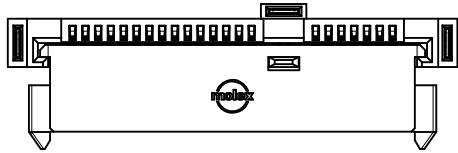
- MATERIAL :  
HOUSING : HIGH TEMPERATURE THERMOPLASTIC, UL94V-0, BLACK  
TERMINAL : COPPER ALLOY
- PLATING :  
TERMINAL :  
CONTACT AREA : GOLD PLATING.  
UNDERPLATING : NICKEL PLATING.

△ FOR PIN P4 & P12 ONLY.  
△ FOR ALL OTHER PINS.

P/N	CONTACT GOLD PLATING SPEC
47662-1000	Au FLASH
47662-1001	Au 15u" MIN
47662-1002	Au 30u" MIN

<p><b>NEW RELEASE</b> EC NO: SH2010-0016 DRW:GLL CHKD:XJSONG APPR:RZHANG 2009/08/21</p>	QUALITY SYMBOLS	GENERAL TOLERANCES (UNLESS SPECIFIED)	DIMENSION STYLE	SCALE	DESIGN UNITS	THIRD ANGLE PROJECTION															
	<p>▽=0 ∇=0</p>	<table border="1"> <thead> <tr> <th></th> <th>mm</th> <th>INCH</th> </tr> </thead> <tbody> <tr> <td>4 PLACES</td> <td>± ---</td> <td>± ---</td> </tr> <tr> <td>3 PLACES</td> <td>± ---</td> <td>± ---</td> </tr> <tr> <td>2 PLACES</td> <td>± 0.20</td> <td>± ---</td> </tr> <tr> <td>1 PLACE</td> <td>± 0.25</td> <td>± ---</td> </tr> </tbody> </table>		mm	INCH	4 PLACES	± ---	± ---	3 PLACES	± ---	± ---	2 PLACES	± 0.20	± ---	1 PLACE	± 0.25	± ---	MM ONLY	4:1	METRIC	
		mm	INCH																		
	4 PLACES	± ---	± ---																		
3 PLACES	± ---	± ---																			
2 PLACES	± 0.20	± ---																			
1 PLACE	± 0.25	± ---																			
DESCRIPTION	<table border="1"> <thead> <tr> <th>DRAWN BY</th> <th>DATE</th> </tr> </thead> <tbody> <tr> <td>DIXON LI</td> <td>2008/12/24</td> </tr> <tr> <th>CHECKED BY</th> <th>DATE</th> </tr> <tr> <td>STARY SONG</td> <td>2008/12/24</td> </tr> <tr> <th>APPROVED BY</th> <th>DATE</th> </tr> <tr> <td>HARVEY WANG</td> <td>2008/12/24</td> </tr> </tbody> </table>	DRAWN BY	DATE	DIXON LI	2008/12/24	CHECKED BY	DATE	STARY SONG	2008/12/24	APPROVED BY	DATE	HARVEY WANG	2008/12/24	TITLE	<p>REMOVABLE SATA 22 PINS RESERVE DIP TYPE INTERPOSER</p>						
DRAWN BY	DATE																				
DIXON LI	2008/12/24																				
CHECKED BY	DATE																				
STARY SONG	2008/12/24																				
APPROVED BY	DATE																				
HARVEY WANG	2008/12/24																				
REV	<p>ANGULAR ± 3 °</p> <p>DRAFT WHERE APPLICABLE MUST REMAIN WITHIN DIMENSIONS</p>	MATERIAL NO.	SEE CHART	DOCUMENT NO.	<p>MOLEX INCORPORATED</p> <p>SD-47662-100</p>																
A		SIZE	A3	<p>THIS DRAWING CONTAINS INFORMATION THAT IS PROPRIETARY TO MOLEX INCORPORATED AND SHOULD NOT BE USED WITHOUT WRITTEN PERMISSION</p>																	

10 9 8 7 6 5 4 3 2 1



ASSEMBLY DRAWING

<b>NEW RELEASE</b> EC NO: SH2010-0016 DRWG:GLL CHKD:XJSONG APPR:RZHANG 2009/08/21	QUALITY SYMBOLS ▽=0 ◻=0	GENERAL TOLERANCES (UNLESS SPECIFIED) mm INCH 4 PLACES ± --- ± --- 3 PLACES ± --- ± --- 2 PLACES ± 0.20 ± --- 1 PLACE ± 0.25 ± --- ANGULAR ± 3 °	DIMENSION STYLE <b>MM ONLY</b>	SCALE <b>2:1</b>	DESIGN UNITS <b>METRIC</b>	THIRD ANGLE PROJECTION	
	DRAWN BY DIXON LI	DATE 2008/12/24	CHECKED BY STARY SONG	DATE 2008/12/24	TITLE <b>REMOVABLE SATA 22 PINS RESERVE DIP TYPE ASSEMBLY</b>		
	APPROVED BY HARVEY WANG	DATE 2008/12/24	MATERIAL NO. <b>SEE SHEET1 &amp; SHEET2</b>			DOCUMENT NO. <b>SD-47662-100</b>	SHEET NO. <b>3 OF 3</b>
	DRAFT WHERE APPLICABLE MUST REMAIN WITHIN DIMENSIONS						THIS DRAWING CONTAINS INFORMATION THAT IS PROPRIETARY TO MOLEX INCORPORATED AND SHOULD NOT BE USED WITHOUT WRITTEN PERMISSION

9 8 7 6 5 4 3 2 1