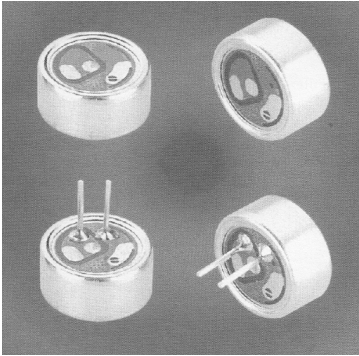


Soberton Inc.

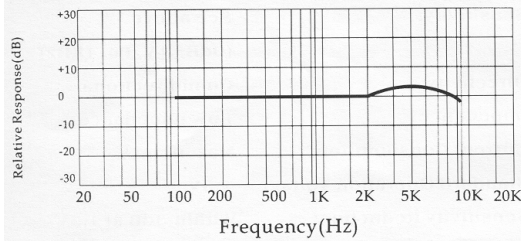
EM1050, EM1050P

Omnidirectional Electret Condenser Microphone

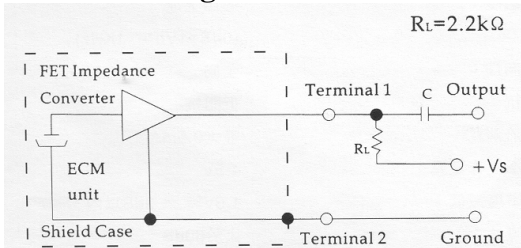


Sensitivity	0dB = 1V/Pa. 1KHz
Directivity	Omnidirectional
Impedance	Low Impedance
Current Consumption	Max. 0.5mA
Standard Operation Voltage	4.5V
Sensitivity Reduction	Within -3dB at 1.5V
S/N Ratio	More than 60dB
Sensitivity Range	-34 ± 2dB, -36 ± 2dB, -38 ± 2dB, -40 ± 2dB, -42 ± 2dB, -44 ± 2dB,

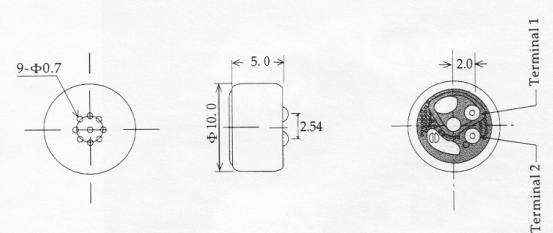
Typical Frequency Response Curve:



Schematic Diagram:



EM1050



EM1050P

