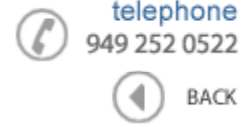




Data Sheet



Product Category: IF SAW Filter

Part Number	Package	Application	Last Modified
805-IF360.0M-D	5.0 x 5.0 SMD	Mobile Communication	Jul. 03, 2007

TYPE :

IF Filter for GSM, PCN system



PART NUMBER :

805-IF360.0M-D

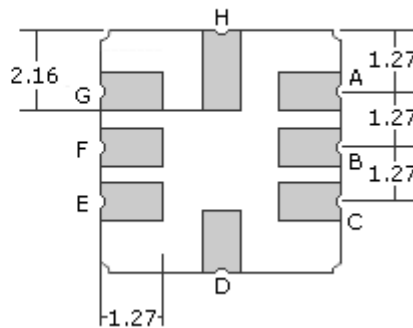
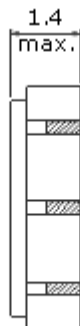
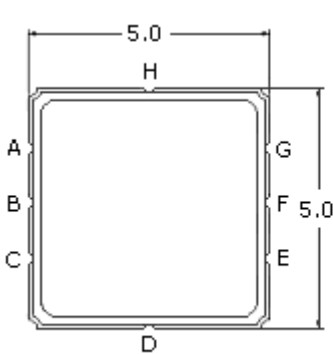
OPERATING CONDITIONS / ELECTRICAL CHARACTERISTICS

PARAMETERS		Minimum	Typical	Maximum	Units
Center Frequency (Fo)	-	-	360	-	MHz
Insertion Loss (a min.)	-	-	4.6	5.2	dB
Relative Attenuation	Fo ± 0.4 ~ Fo ± 0.6 MHz	35	38	-	dB
	Fo ± 0.6 ~ Fo ± 0.8 MHz	42	50	-	
	Fo ± 0.8 ~ Fo ± 1.6 MHz	42	55	-	
	Fo ± 1.6 ~ Fo ± 5.0MHz	45	55	-	
	Fo ± 5.0 ~ Fo ± 30.0 MHz	50	57	-	
Amplitude Ripple	Fo ± 67.7 KHz	-	0.8	1.5	dB
Group Delay Ripple	Fo ± 67.7 KHz	-	0.7	2.0	us
FTC	-	-	0.032	-	ppm/°C ²
Terminating Impedance	-	-	50	-	ohm
DC Voltage	-	-	0	-	V
Input Power	-	-	5	-	dBm
Operating Temperature	-	0	-	+55	°C
Storage Temperature	-	-35	-	+85	°C

* Maximum Rating (Ta = 25°C)

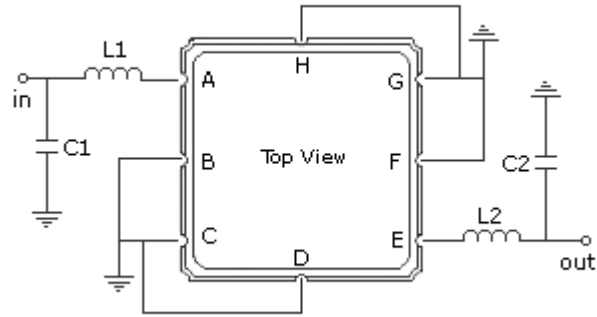
** Custom SAW IF Filters available. Contact Oscilent for assistance.

PACKAGE OUTLINE (mm)

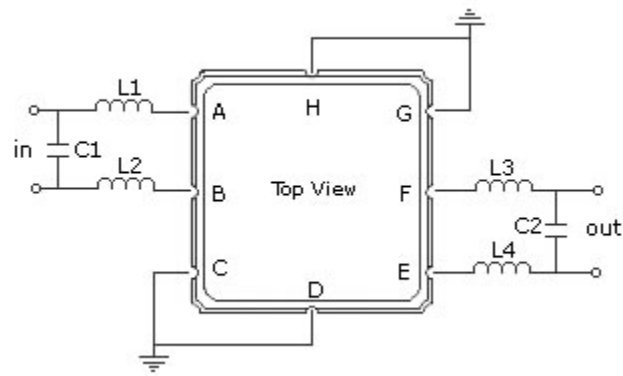


PIN LAYOUT	
A	In
B	In or Ground
C	Ground
D	Ground
E	Out
F	Out or Ground
G	Ground
H	Ground

TEST FIXTURE

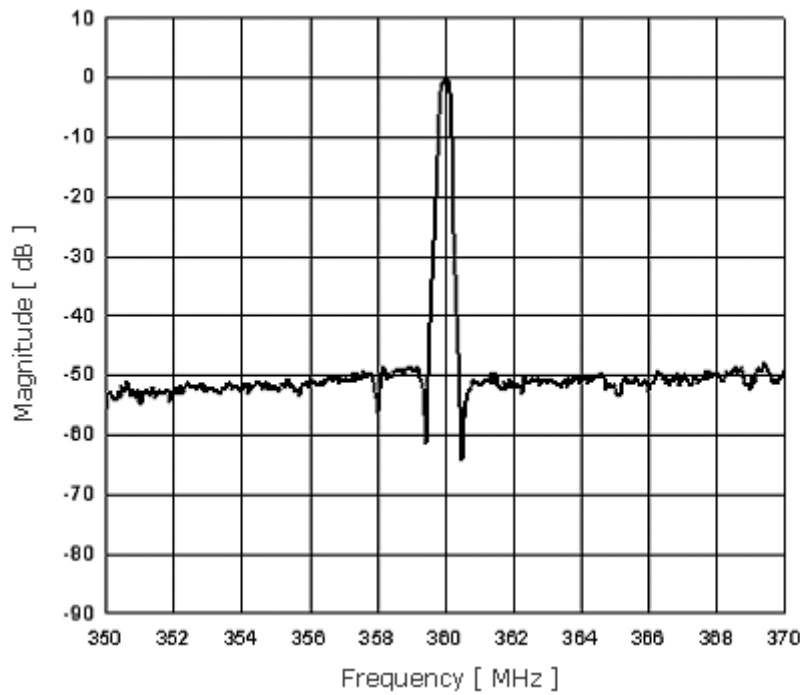
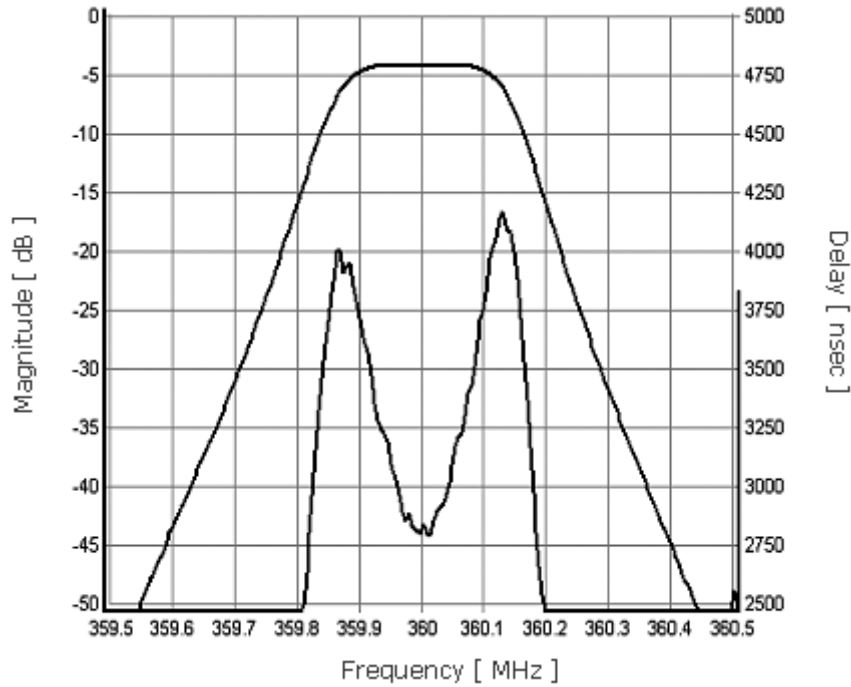


L1 = 68nH C1 = 7pF
 L2 = 74nH C2 = 7pF
 Source/Load Impedance = 50 ohms



L1 = 56nH C1 = 5pF
 L2 = 56nH C2 = 4.3pF
 L3 = 56nH
 L4 = 56nH
 Source/Load Impedance = 50 ohms

FREQUENCY RESPONSE



Oscilent Corporation - CALL **949.252.0522**

Part No.: 805-IF360.0M-D

18195 East McDermott Street . Building D . Irvine . CA . 92614 . USA
 Fax: 949.252.0599 . E-Mail: Sales@Oscilent.com