

PLEASE CHECK WWW.MOLEX.COM FOR LATEST PART INFORMATION

Part Number: **0679138006**
Status: **Active**
Description: 2.50mm (.098") Pitch, SDIO Memory Card Connector, Reverse Mount, Push Push Type, without Card Lock Pin, Lead free

Documents:

[3D Model](#) [Product Specification PS-67913-003 \(PDF\)](#)
[Drawing \(PDF\)](#) [RoHS Certificate of Compliance \(PDF\)](#)

General

| | |
|----------------|---|
| Product Family | Memory Card Sockets |
| Series | 67913 |
| Button Type | Push-Push |
| Comments | SD/MMC acceptable. Without Card Lock Pin. Lead free |
| Component Type | Header & Ejector (Host) |
| Product Name | SDIO |
| Type | N/A |

Physical

| | |
|--------------------------------|--------------------------------|
| Card Detection Switch | Yes |
| Circuits (Loaded) | 9 |
| Circuits (maximum) | 9 |
| Color - Resin | Black |
| Durability (mating cycles max) | 10,000 |
| Ejector Button Side | No Ejector Button Present |
| Entry Angle | 90° Angle (Side Entry) |
| Keying to Mating Part | Yes |
| Material - Metal | Copper Alloy |
| Material - Plating Mating | Gold |
| Material - Resin | High Temperature Thermoplastic |
| PCB Locator | Yes |
| PCB Mounting Side | Reverse |
| PCB Retention | Yes |
| Packaging Type | Embossed Tape on Reel |
| Pitch - Mating Interface (in) | 0.067 In, 0.098 In |
| Pitch - Mating Interface (mm) | 1.70 mm, 2.50 mm |
| Pitch - Term. Interface (in) | 0.067 In, 0.098 In |
| Pitch - Term. Interface (mm) | 1.70 mm, 2.50 mm |
| Ports | 1 |
| Termination Interface: Style | Surface Mount |

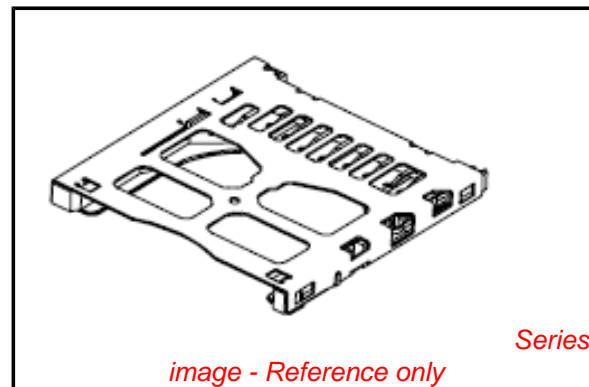
Electrical

| | |
|-------------------------------|---------|
| Current - Maximum per Contact | 0.5A |
| Shielded | Yes |
| Voltage - Maximum | 250V DC |

Material Info

Reference - Drawing Numbers

| | |
|-------------------------|--------------|
| Packaging Specification | PK-67913-001 |
| Product Specification | PS-67913-003 |
| Sales Drawing | SD-67913-003 |



EU RoHS

**ELV and RoHS
Compliant**
REACH SVHC
 Not Reviewed
**Halogen-Free
Status**

China RoHS



Not Reviewed
**Need more information on product
environmental compliance?**

Email productcompliance@molex.com
 For a multiple part number RoHS Certificate of Compliance, [click here](#)

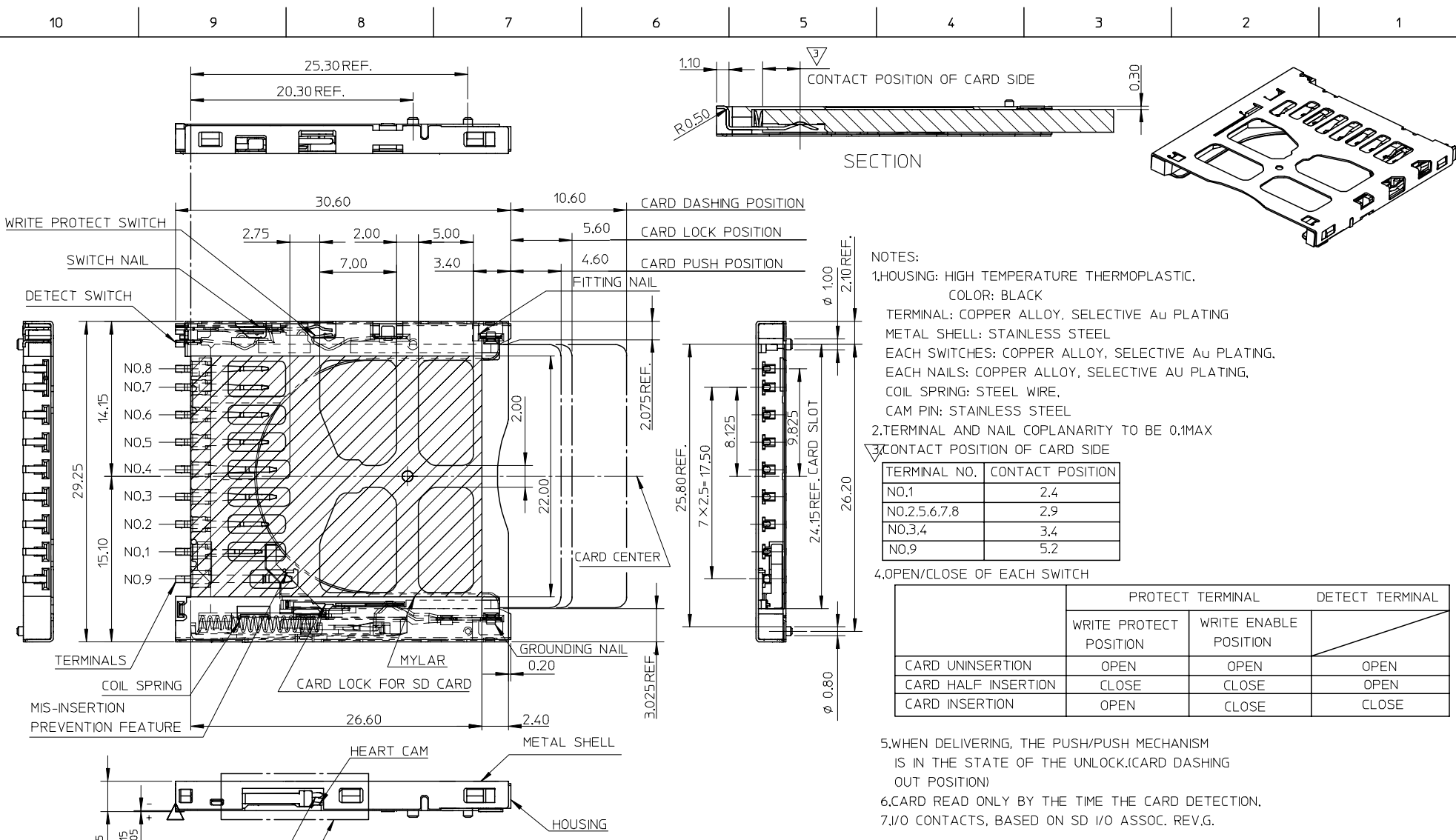
Please visit the [Contact Us](#) section for any non-product compliance questions.

Search Parts in this Series

67913Series

Use With

SDIO



- NOTES:
- HOUSING: HIGH TEMPERATURE THERMOPLASTIC.
COLOR: BLACK
 - TERMINAL: COPPER ALLOY, SELECTIVE Au PLATING
 - METAL SHELL: STAINLESS STEEL
 - EACH SWITCHES: COPPER ALLOY, SELECTIVE Au PLATING.
 - EACH NAILS: COPPER ALLOY, SELECTIVE AU PLATING.
 - COIL SPRING: STEEL WIRE.
 - CAM PIN: STAINLESS STEEL
- 2.TERMINAL AND NAIL COPLANARITY TO BE 0.1MAX
3. CONTACT POSITION OF CARD SIDE

| TERMINAL NO. | CONTACT POSITION |
|--------------|------------------|
| NO.1 | 2.4 |
| NO.2,5,6,7,8 | 2.9 |
| NO.3,4 | 3.4 |
| NO.9 | 5.2 |

4.OPEN/CLOSE OF EACH SWITCH

| | PROTECT TERMINAL | | DETECT TERMINAL |
|---------------------|------------------------|-----------------------|-----------------|
| | WRITE PROTECT POSITION | WRITE ENABLE POSITION | |
| CARD UNINSERTION | OPEN | OPEN | OPEN |
| CARD HALF INSERTION | CLOSE | CLOSE | OPEN |
| CARD INSERTION | OPEN | CLOSE | CLOSE |

- WHEN DELIVERING, THE PUSH/PUSH MECHANISM IS IN THE STATE OF THE UNLOCK.(CARD DASHING OUT POSITION)
- CARD READ ONLY BY THE TIME THE CARD DETECTION.
- I/O CONTACTS, BASED ON SD I/O ASSOC. REV.G.

| PART NO. | DESCRIPTION | PRODUCT SPECIFICATION | REMARK |
|------------|-----------------------------|-----------------------|-------------|
| 67913-8003 | LEAD-FREE WITH/MYLAR | PS-67913-003 | FOR SD ONLY |
| 67913-8006 | LEAD-FREE W/O CARD LOCK PIN | | SD/MMC |

NEW RELEASE
 EC NO: 2005/06/16
 DRAWN: QI ZHANG
 CHKD:
 APPR:

QUALITY SYMBOLS
 ▽=0
 ▽=0

GENERAL TOLERANCES (UNLESS SPECIFIED)

| | mm | INCH |
|---------------|--------|-------|
| 4 PLACES | ± --- | ± --- |
| 3 PLACES | ± --- | ± --- |
| 2 PLACES | ± 0.25 | ± --- |
| 1 PLACE | ± 0.25 | ± --- |
| ANGULAR ± 3 ° | | |

DRAFT WHERE APPLICABLE MUST REMAIN WITHIN DIMENSIONS

DIMENSION STYLE
 MM ONLY

SCALE
 3:1

DESIGN UNITS
 METRIC

THIRD ANGLE PROJECTION

DRAWN BY
 QI ZHANG

DATE
 2005/05/26

CHECKED BY
 DATE

APPROVED BY
 DATE

MATERIAL NO.

DOCUMENT NO.

SIZE
 A3

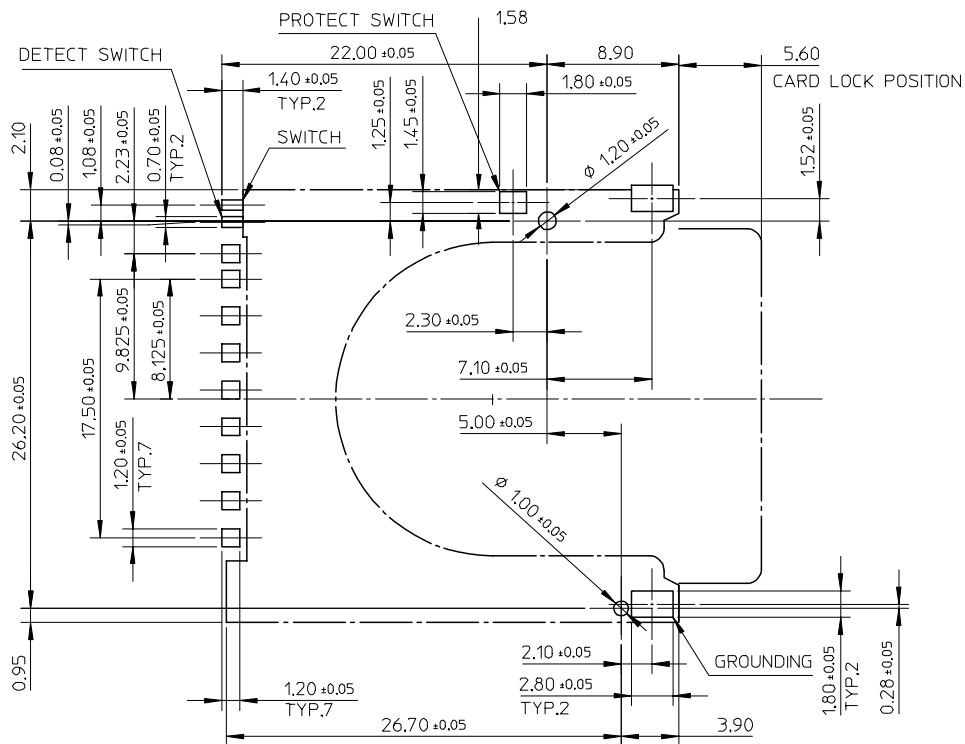
TITLE
 SD/I/O CARD CONN.
 REVERSE TYPE WITH
 PUSH PUSH (LEAD-FREE)

MOLEX INCORPORATED

SD-67913-003

SHEET NO.
 1 OF 3

THIS DRAWING CONTAINS INFORMATION THAT IS PROPRIETARY TO MOLEX INCORPORATED AND SHOULD NOT BE USED WITHOUT WRITTEN PERMISSION

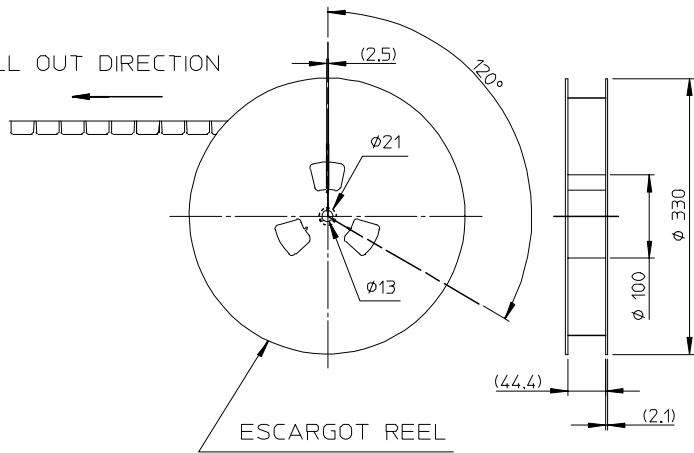


RECOMMENDED P.C.B LAYOUT DIMENSION

| | | | | | | | | | | | |
|-------------|--------|---|--------------------------------|--|-------|-----------------|------------|--|------------------------|---------------------|--|
| NEW RELEASE | EC NO: | 2005/06/16 | QUALITY SYMBOLS ▽=0 ▽C=0 | GENERAL TOLERANCES (UNLESS SPECIFIED) | | DIMENSION STYLE | SCALE | DESIGN UNITS | THIRD ANGLE PROJECTION | | |
| | DRAWN: | QLZHANG | | mm | INCH | MM ONLY | 3:1 | METRIC | | | |
| | CHKD: | | | 4 PLACES ± --- | ± --- | DRAWN BY | DATE | TITLE | | | |
| | APPR: | | | 3 PLACES ± --- | ± --- | QLZHANG | 2005/05/26 | SD/IO CARD CONN. REVERSE TYPE WITH PUSH PUSH (LEAD-FREE) | | | |
| | | 2 PLACES ± 0.25 | ± --- | 2 PLACES ± 0.25 | ± --- | CHECKED BY | DATE | MOLEX INCORPORATED | | | |
| | | 1 PLACE ± 0.25 | ± --- | 1 PLACE ± 0.25 | ± --- | APPROVED BY | DATE | DOCUMENT NO. | | | |
| | | ANGULAR ± 3 ° | | DRAFT WHERE APPLICABLE MUST REMAIN WITHIN DIMENSIONS | | SEE SHEET 1 | | SD-67913-003 | | SHEET NO. 2 OF 3 | |
| | | THIS DRAWING CONTAINS INFORMATION THAT IS PROPRIETARY TO MOLEX INCORPORATED AND SHOULD NOT BE USED WITHOUT WRITTEN PERMISSION | | | | | | | | | |

10 9 8 7 6 5 4 3 2 1

PULL OUT DIRECTION

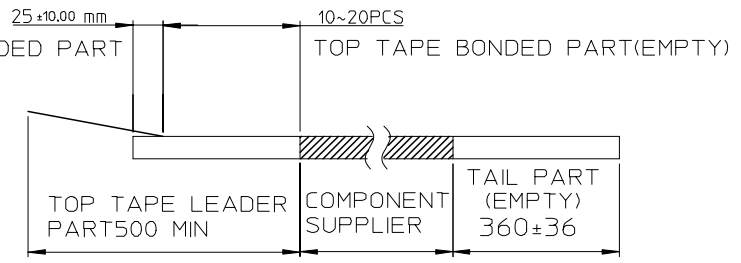


ESCARGOT REEL

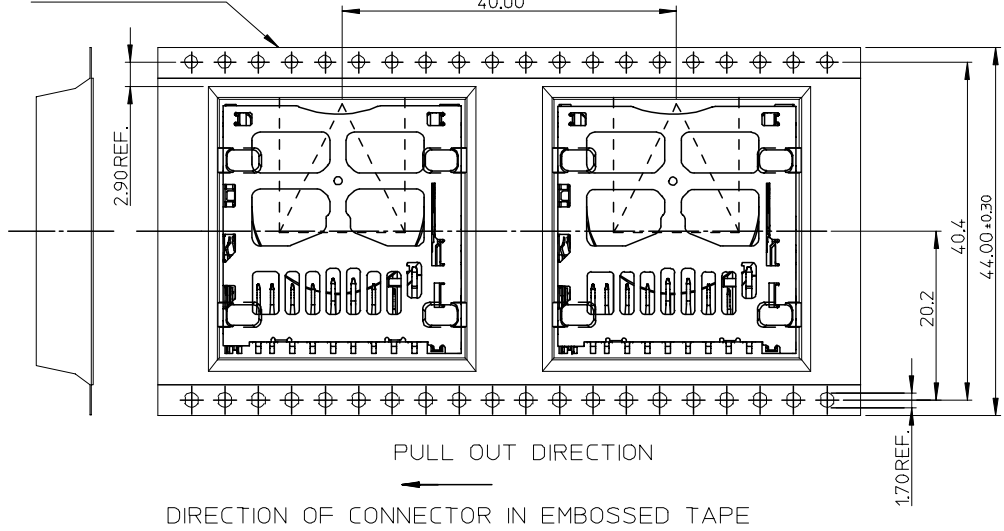
NOTES

1. NUMBER OF CONNECTORS: 300 PCS/REEL
- 2.

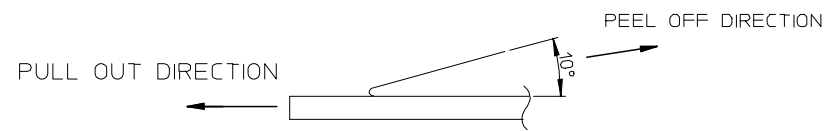
TOP TAPE NON-BONDED PART
PULL OUT DIRECTION



44 WIDTH TAPE



3. PEEL OFF FORCE OF TOP TAPE: 0.1~1.3 N (10.2~130gf)
PEELING DIRECTION AS SHOWN IN FOLLOWING FIG.)
(PEEL OFF SPEED: 300mm/min.REF.)



4. PACKAGING DRAWING REFERS TO PK-67913-001.

| | | | | | | | | |
|---|---|--|--|---|-------|------------------------------------|---|--|
| <p>NEW RELEASE</p> <p>EC NO: 2005/06/16</p> <p>DRWN: QLZHANG</p> <p>CHKD: CHIKD</p> <p>APPR:</p> | <p>QUALITY SYMBOLS</p> <p>▽=0</p> <p>▽C=0</p> | GENERAL TOLERANCES (UNLESS SPECIFIED) | | DIMENSION STYLE | SCALE | DESIGN UNITS | THIRD ANGLE PROJECTION | |
| | | | | MM ONLY | 1:1 | METRIC | | |
| | | | | mm | INCH | DRAWN BY: OLZHANG DATE: 2005/05/26 | | |
| | | | | APPROVED BY: DATE: | | | TITLE: SD/IO CARD CONN. REVERSE TYPE WITH PUSH PUSH (LEAD-FREE) | |
| | | 4 PLACES ± --- ± --- | | MATERIAL NO. | | DOCUMENT NO. | | |
| | | 3 PLACES ± --- ± --- | | SEE SHEET 1 | | SD-67913-003 | | |
| | | 2 PLACES ± 0.25 ± --- | | SIZE A3 | | SHEET NO. 3 OF 3 | | |
| | | 1 PLACE ± 0.25 ± --- | | THIS DRAWING CONTAINS INFORMATION THAT IS PROPRIETARY TO MOLEX INCORPORATED AND SHOULD NOT BE USED WITHOUT WRITTEN PERMISSION | | | | |
| | | ANGULAR ± 3 ° | | | | | | |
| | | DRAFT WHERE APPLICABLE MUST REMAIN WITHIN DIMENSIONS | | | | | | |

9 8 7 6 5 4 3 2 1