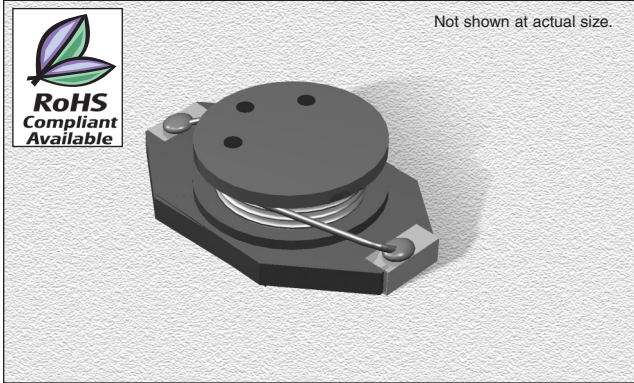


# CTDO3308 Series

From 4.7  $\mu\text{H}$  to 1,000  $\mu\text{H}$



## SPECIFICATIONS

Parts are available in  $\pm 20\%$  tolerance only.  
**CTDO3308PE** Please specify "F" for RoHS Compliant

Part Number	Inductance ( $\mu\text{H}$ )	L Test Freq. (kHz)	DCR ( $\Omega$ )	Isat (A)	Irms (A)
CTDO3308P_-472	4.7	100	.04	4.2	3.2
CTDO3308P_-682	6.8	100	.06	3.9	2.6
CTDO3308P_-103	10	100	.09	2.4	2.0
CTDO3308P_-153	15	100	.12	2.0	1.5
CTDO3308P_-223	22	100	.19	1.6	1.3
CTDO3308P_-333	33	100	.25	1.4	1.1
CTDO3308P_-473	47	100	.32	1.0	.80
CTDO3308P_-683	68	100	.55	.90	.70
CTDO3308P_-104	100	100	.70	.70	.60
CTDO3308P_-154	150	100	1.0	.60	.50
CTDO3308P_-224	220	100	1.6	.50	.40
CTDO3308P_-334	330	100	2.2	.40	.30
CTDO3308P_-474	470	100	3.3	.30	.20
CTDO3308P_-684	680	100	4.4	.20	.10
CTDO3308P_-105	1000	100	7.0	.10	.05

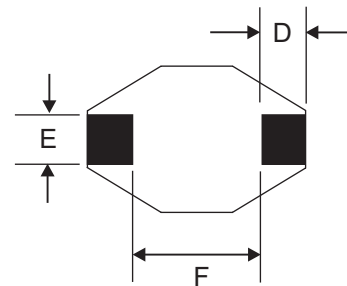
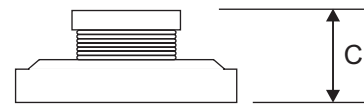
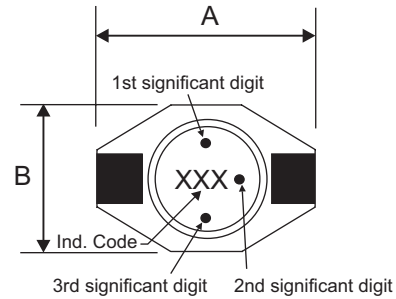
## PHYSICAL DIMENSIONS

Size	A Max.	B Max.	C Max.	D	E	F
mm	12.95	9.4	3	2.54	2.54	7.62
inches	0.51	0.37	0.12	0.1	0.1	0.3

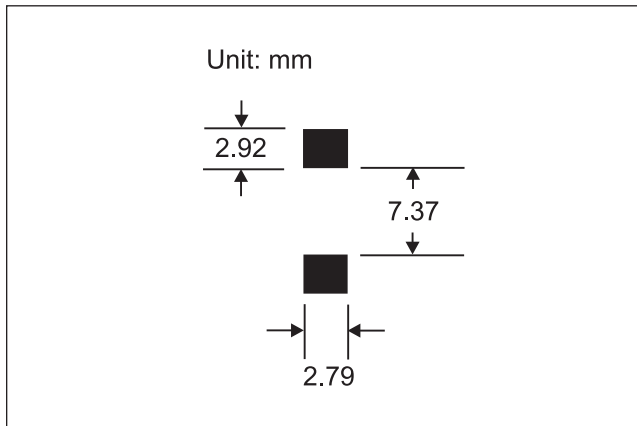
## CHARACTERISTICS

- Description:** SMD power inductor
- Applications:** DC/DC converters, computers, LCD displays, telecommunication equipment and PDA palm tops.
- Operating Temperature:**  $-40^{\circ}\text{C}$  to  $+85^{\circ}\text{C}$
- Inductance Tolerance:**  $\pm 20\%$
- Inductance Drop:** 10% typically at Isat
- Testing:** Inductance is tested on an HP4285A at 100 kHz
- Packaging:** Tape & Reel
- Marking:** Color dots or Inductance code
- Miscellaneous:** RoHS Compliant available
- Additional Information:** Additional electrical & physical information available upon request
- Samples available. See website for ordering information.**

Parts will be marked with Significant Digit Dots OR Inductance Code



## PAD LAYOUT



06.18.07