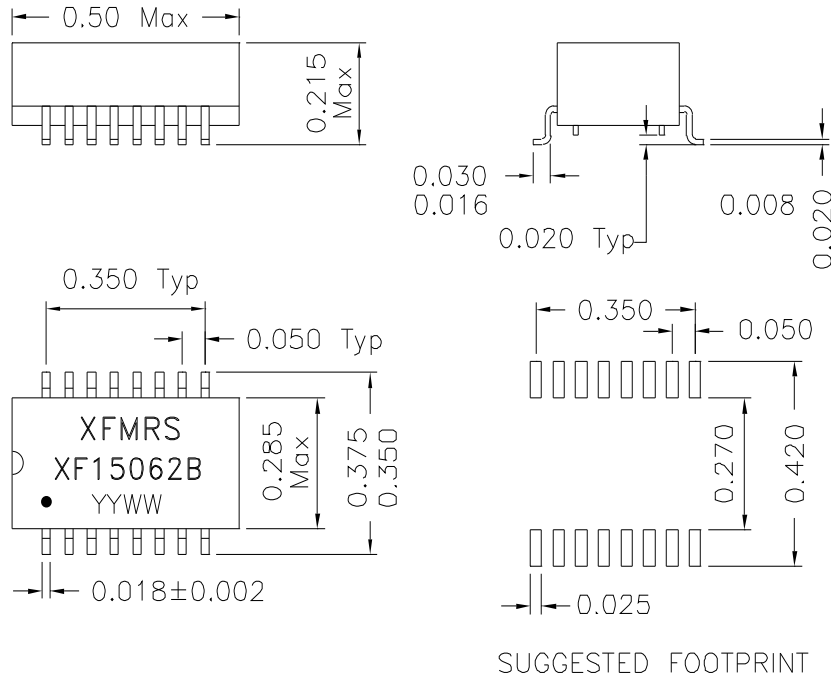


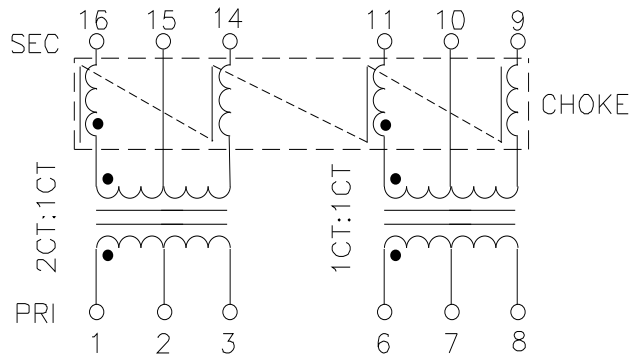
### 1. Mechanical Dimensions:



### 3. Electrical Specifications: @25°C

- PRI/SEC Isolation: 1500Vrms
- Turns Ratio: (1-2-3):(16-15-14) 2CT:1CT±2%
- Turns Ratio: (6-7-8):(11-10-9) 1CT:1CT±2%
- PRI OCL: 150uH ±20% @100KHz 50mV
- 1-3 LL: 0.90uH Max @100KHz 50mV 16-14 Shorted
- 6-8 LL: 0.90uH Max @100KHz 50mV 11-9 Shorted
- PRI DCR: 0.35 ohms Max
- SEC DCR: 0.35 ohms Max
- PRI/SEC Cw/w: 10pF Max @100KHz 50mV
- CHOKE OCL: 30uH Typ @100KHz 50mV

### 2. Schematics:



DOC. REV A/1

<b>XFMR5 Inc</b>		Title: 10 BASE T Magnetics	
UNLESS OTHERWISE SPECIFIED TOLERANCES: .xxx ±0.010 Dimensions in INCH	P/N: XF15062B		REV. A
	DWN.	李清儿	May-13-99
	CHK.	孙小松	May-13-99
	APP.	Joe Huff	May-19-99
SCALE 2.5:1 SHT 1 OF 1			