

## Specifications

Voltage Rating: 150V AC  
 Current Rating: 1.0A  
 Operating Temperature Range: -40°C to +105°C  
 Withstanding Voltage: 500V for 1 minute  
 Soldering Temp.: 220°C min. / 60 sec., 250°C peak

## Materials and Finish

Housing: UL 94V-0 listed  
 Terminals: Brass  
 Contact Plating: Selective Gold over Nickel



## Features

⇨ Pin count from 10 to 68

## Part Number (Details)

ZP9 - \*\* - G2T

Series No.

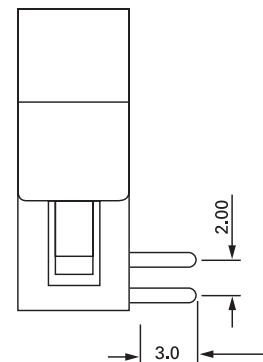
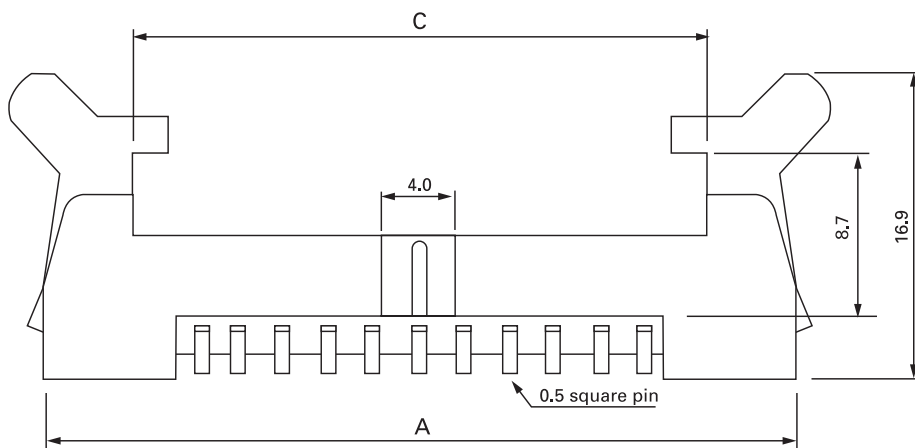
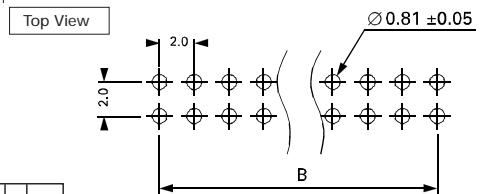
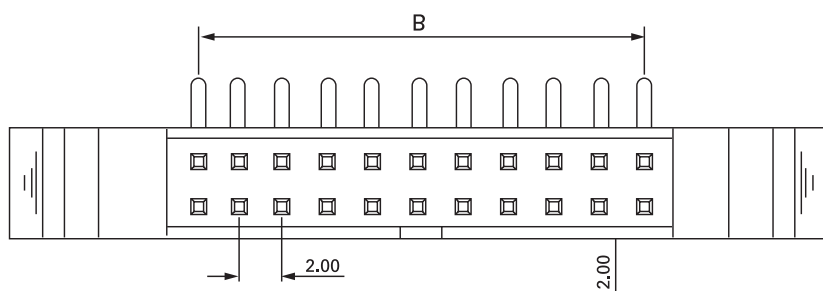
No. of Contact Pins

Plating:

G2T = Selective Gold

## Outline Connector Dimensions

## Recommended PCB Layouts



## Dimensional Information

Part Number	Dim. A	Dim. B	Dim. C	Part Number	Dim. A	Dim. B	Dim. C
ZP9-10-G2T	25.7	8.0	15.8	ZP9-26-G2T	41.7	24.0	31.8
ZP9-12-G2T	27.7	10.0	17.8	ZP9-30-G2T	45.7	28.0	35.8
ZP9-14-G2T	29.7	12.0	19.8	ZP9-34-G2T	49.7	32.0	39.8
ZP9-16-G2T	31.7	14.0	21.8	ZP9-40-G2T	55.7	38.0	45.8
ZP9-20-G2T	35.7	18.0	25.8	ZP9-44-G2T	59.7	42.0	49.8
ZP9-22-G2T	37.7	20.0	27.8	ZP9-50-G2T	65.7	48.0	55.8
ZP9-24-G2T	39.7	22.0	29.8	ZP9-68-G2T	83.7	66.0	73.8