

IEC Appliance Inlet C14 with Filter, Line Switch 1- or 2-pole, PCB Mounting

Standard- or Medical-Filter



new



C14



70° C



### Description

- Panel Mount:  
Screw-on mounting on PCB from rear-side
- 3 Functions:  
Appliance Inlet Protection class I, Line Switch 1- or 2-pole, Line filter in standard and medical version
- For PCB mounting
- Alternative: version without line filter [DC21](#)

### Approvals

- VDE License Number: 40001522
- UL License Number: E72928

### Characteristics

- Ultra-compact design
- All single elements are already wired
- Line switch non-illuminated or illuminated
- With EMC-shield
- Especially suitable for use in switching power supplies  
Ideal for application with high transient loads
- Qualified for use in equipment according IEC/EN 60950

### Other versions on request

- Fixing on PCB with self-tapping screws 3 mm or pre-inserted nuts M3
- Other rocker marking
- Illuminated green
- Medical version M80
- Capacitance CX1

### References

[General Product Information](#)

### Weblinks

[Approvals](#), [RoHS](#), [CHINA-RoHS](#), [Mating Connectors](#), [e-Store](#), [Distributor-Stock-Check](#), [Accessories](#)

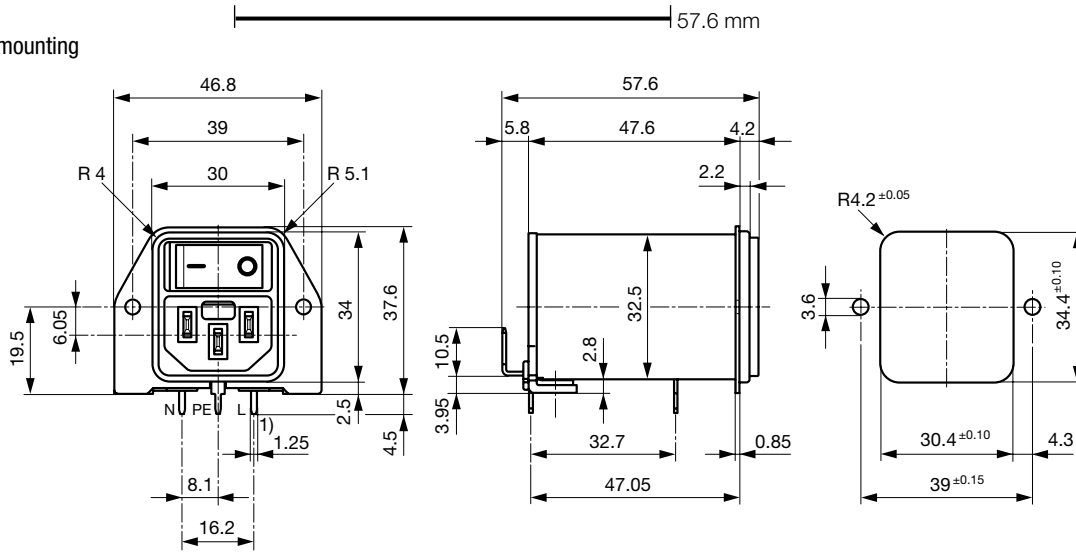
### Technical Data

|                           |   |
|---------------------------|---|
| Ratings IEC               | 1 - 10A @ Ta 40 °C / 250 VAC; 50Hz  |
| Ratings UL/CSA            | 1 - 10A @ Ta 40 °C / 125 VAC; 60Hz  |
| Leakage Current           | standard < 0.5 mA (250 V / 60Hz)<br>medical < 5 µA (250 V / 60 Hz)                                |
| Dielectric Strength       | > 1.7 kVDC between L-N<br>> 2.7 kVDC between L/N-PE<br>Test voltage (2 sec)                       |
| Allowable Operation Temp. | -25 °C to 85 °C   |
| Climatic Category         | 25/085/21 acc. to IEC 60068-1   |
| Degree of Protection      | from front side IP 40 acc. to IEC 60529   |
| Protection Class          | Suitable for appliances with protection class 1 acc. to IEC 61140                                 |
| Terminal                  | For PCB mounting ; Ground terminal:<br>Quick connect terminals 6.3 x 0.8 mm<br>angled to pin axis |
| Panel Thickness s         | Screw: max 4 mm<br>Mounting screw torque max 0.5 Nm   |
| Material: Housing         | Thermoplastic, black, UL 94V-0  |

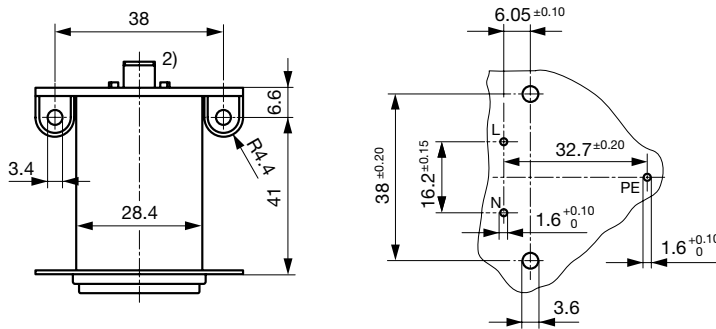
|                         |   |
|-------------------------|---|
| Appliance-Inlet/-Outlet | C14 acc. to IEC/EN 60320-1,<br>UL 498 CSA C22.2 no. 42 (for cold conditions) pin-temperature 70 °C, 10A, Protection Class 1             |
| Line Switch             | Rocker switch 1 or 2 pole, non-illuminated or illuminated red, acc. to IEC 61058-1<br><a href="#">Technical details</a>                 |
| Line Filter             | Standard and Medical Version, IEC 60939, IEC 60601-1, UL 1283, UL 544, EN 133 200, CSA C22.2 no. 8<br><a href="#">Technical details</a> |
| MTBF                    | > 2'100'000h acc. to MIL-HB-217 F   |

## Dimensions

Screw on PCB mounting



1) all pins



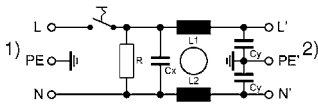
2) PE additionally as quick-connect terminal 6.3 x 0.8

## Technical Data of Filter-Components

| Rated Current [A] | Filter-Type          | Inductances L [mH] | Capacitance CX [nF] | Capacitance CY [nF] | R [MΩ] |
|-------------------|----------------------|--------------------|---------------------|---------------------|--------|
| 1                 | Standard Version     | 2 x 10             | 100                 | 2.2                 | 1      |
| 2                 | Standard Version     | 2 x 4              | 100                 | 2.2                 | 1      |
| 4                 | Standard Version     | 2 x 1.5            | 100                 | 2.2                 | 1      |
| 6                 | Standard Version     | 2 x 0.8            | 100                 | 2.2                 | 1      |
| 10                | Standard Version     | 2 x 0.3            | 100                 | 2.2                 | 1      |
| 1                 | Medical Version (M5) | 2 x 10             | 100                 | -                   | 1      |
| 2                 | Medical Version (M5) | 2 x 4              | 100                 | -                   | 1      |
| 4                 | Medical Version (M5) | 2 x 1.5            | 100                 | -                   | 1      |
| 6                 | Medical Version (M5) | 2 x 0.8            | 100                 | -                   | 1      |
| 10                | Medical Version (M5) | 2 x 0.3            | 100                 | -                   | 1      |

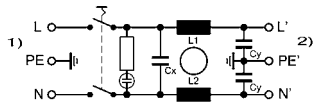
**Diagrams**

Standard filter 1-pole



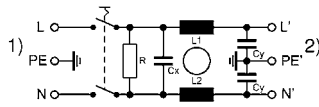
- 1) Line
- 2) Load

Standard filter 2-pole illuminated



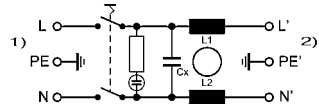
- 1) Line
- 2) Load

Standard filter 2-pole



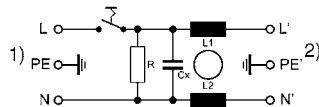
- 1) Line
- 2) Load

Medical Filter 2-pole (M5) illuminated



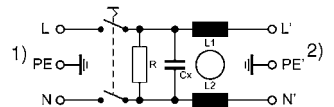
- 1) Line
- 2) Load

Medical filter 1-pole (M5)



- 1) Line
- 2) Load

Medical filter 2-pole (M5)



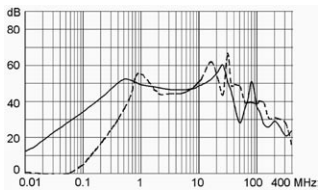
- 1) Line
- 2) Load

**Attenuation Loss**

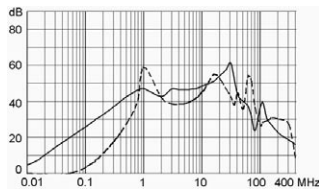
--- differential mode \_\_\_\_ common mode

Standard version

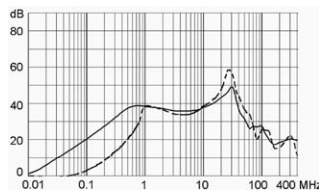
1 A



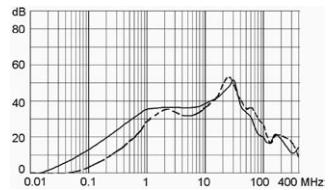
2 A



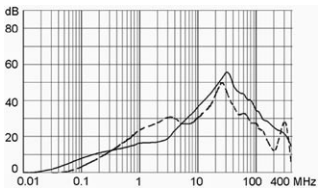
4 A



6 A

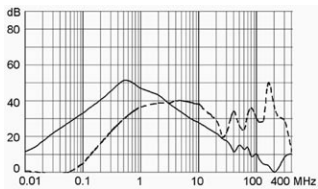


10 A

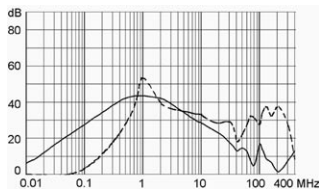


Medical version (M5)

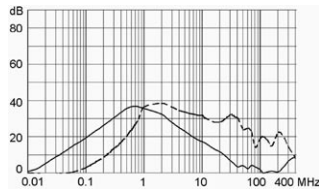
1 A



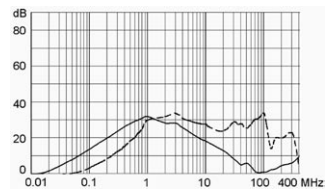
2 A



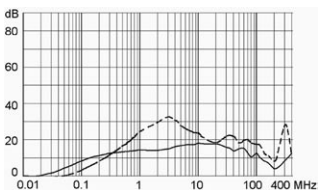
4 A



6 A



10 A



## Variants

| Rated Current [A] | Filter-Type          | Line Switch | Illumination | Color | Order Number  |
|-------------------|----------------------|-------------|--------------|-------|---------------|
| 1                 | Standard Version     | 1-pole      |              | -     | DC22.1111.111 |
| 2                 | Standard Version     | 1-pole      |              | -     | DC22.2111.111 |
| 4                 | Standard Version     | 1-pole      |              | -     | DC22.4111.111 |
| 6                 | Standard Version     | 1-pole      |              | -     | DC22.6111.111 |
| 10                | Standard Version     | 1-pole      |              | -     | DC22.9111.111 |
| 1                 | Standard Version     | 2-pole      |              | -     | DC22.1121.111 |
| 2                 | Standard Version     | 2-pole      |              | -     | DC22.2121.111 |
| 4                 | Standard Version     | 2-pole      |              | -     | DC22.4121.111 |
| 6                 | Standard Version     | 2-pole      |              | -     | DC22.6121.111 |
| 10                | Standard Version     | 2-pole      |              | -     | DC22.9121.111 |
| 1                 | Standard Version     | 2-pole      | ●            | red   | DC22.1123.111 |
| 2                 | Standard Version     | 2-pole      | ●            | red   | DC22.2123.111 |
| 4                 | Standard Version     | 2-pole      | ●            | red   | DC22.4123.111 |
| 6                 | Standard Version     | 2-pole      | ●            | red   | DC22.6123.111 |
| 10                | Standard Version     | 2-pole      | ●            | red   | DC22.9123.111 |
| 1                 | Medical Version (M5) | 2-pole      |              | -     | DC22.1221.111 |
| 2                 | Medical Version (M5) | 2-pole      |              | -     | DC22.2221.111 |
| 4                 | Medical Version (M5) | 2-pole      |              | -     | DC22.4221.111 |
| 6                 | Medical Version (M5) | 2-pole      |              | -     | DC22.6221.111 |
| 10                | Medical Version (M5) | 2-pole      |              | -     | DC22.9221.111 |
| 1                 | Medical Version (M5) | 2-pole      | ●            | red   | DC22.1223.111 |
| 2                 | Medical Version (M5) | 2-pole      | ●            | red   | DC22.2223.111 |
| 4                 | Medical Version (M5) | 2-pole      | ●            | red   | DC22.4223.111 |
| 6                 | Medical Version (M5) | 2-pole      | ●            | red   | DC22.6223.111 |
| 10                | Medical Version (M5) | 2-pole      | ●            | red   | DC22.9223.111 |

Packaging unit 10 Pcs

## Accessories

## Description



Cord retaining kits  
Cord retaining strain relief

Flat head, H

4700.0008

## Mating Outlets/Connectors

## Category / Description

[Appliance Outlet Overview complete](#)



IEC Appliance Outlet F, Screw-on Mounting, Front Side, Solder or Quick-connect Terminal 4787

IEC Appliance Outlet F, Snap-in Mounting, Front Side, Solder or Quick-connect Terminal 4788

IEC Appliance Outlet F or H, Screw-on Mounting, Front Side, Solder, PCB or Quick-connect Terminal 5091

IEC Appliance Outlet F or H, Screw-on Mounting, Front Side, Solder or Quick-connect Terminal 5092

[Appliance Outlet further types to DC22](#)



[Connector Overview complete](#)

|   |        |
|---|--------|
| IEC Connector C15, Rewireable, Straight         | 0101   |
| IEC Connector C15A, Rewireable, Straight        | 0102   |
| IEC Connector C15A, Rewireable, Straight        | 0102-G |
| IEC Connector C15A, Rewireable, Angled          | 0112   |
| IEC Connector C13, Rewireable, Angled           | 4012   |
| <a href="#">Connector further types to DC22</a> | ...    |



[Power Cord Overview complete](#)

|  |      |
|--|------|
| Power Cord with IEC Connector C13, Angled        | 0311 |
| Power Cord with IEC Connector C13, Angled        | 3011 |
| Power Cord with IEC Connector C13, Angled        | 3012 |
| Power Cord with IEC Connector C13, Angled        | 3013 |
| Power Cord with IEC Connector C13                | 3020 |
| <a href="#">Power Cord further types to DC22</a> | ...  |