



TAI-SAW TECHNOLOGY CO., LTD.

No. 3, Industrial 2nd Rd., Ping-Chen Industrial District,
Tao-Yuan, 324, Taiwan, R.O.C.

TEL: 886-3-4690038 FAX: 886-3-4697532

E-mail: tstsales@mail.taisaw.com Web: www.taisaw.com

Approval Sheet for Product Specification

Issued Date:

Product Name: 545MHz IF SAW Filter (BW=30MHz)

TST Parts No.: TB0749A

Customer Parts No.: _____

Company: _____
Division: _____
Approved by : _____
Date: _____

Checked by: Andy Yu *Andy Yu*

Approval by: Francis Chen *[Signature]*

Date: 04/20/2009



TAI-SAW TECHNOLOGY CO., LTD.

No.3, Industrial 2nd Rd., Ping-Chen Industrial District, Taoyuan, Taiwan, R.O.C.

TEL: 886-3-4690038 FAX: 886-3-4697532

E-mail: tstsales3@mail.taisaw.com Web: www.taisaw.com

SAW Filter 545MHz (SMD 5.0×5.0 mm)

MODEL NO.: TB0749A

Rev. NO. 1.0

A. MAXIMUM RATING:

1. Operating Temperature: -20 °C ~ +75 °C
2. Storage Temperature: -40 °C ~ +85 °C
3. Input power: 10dBm

RoHS Compliant
Lead free
Lead-free soldering

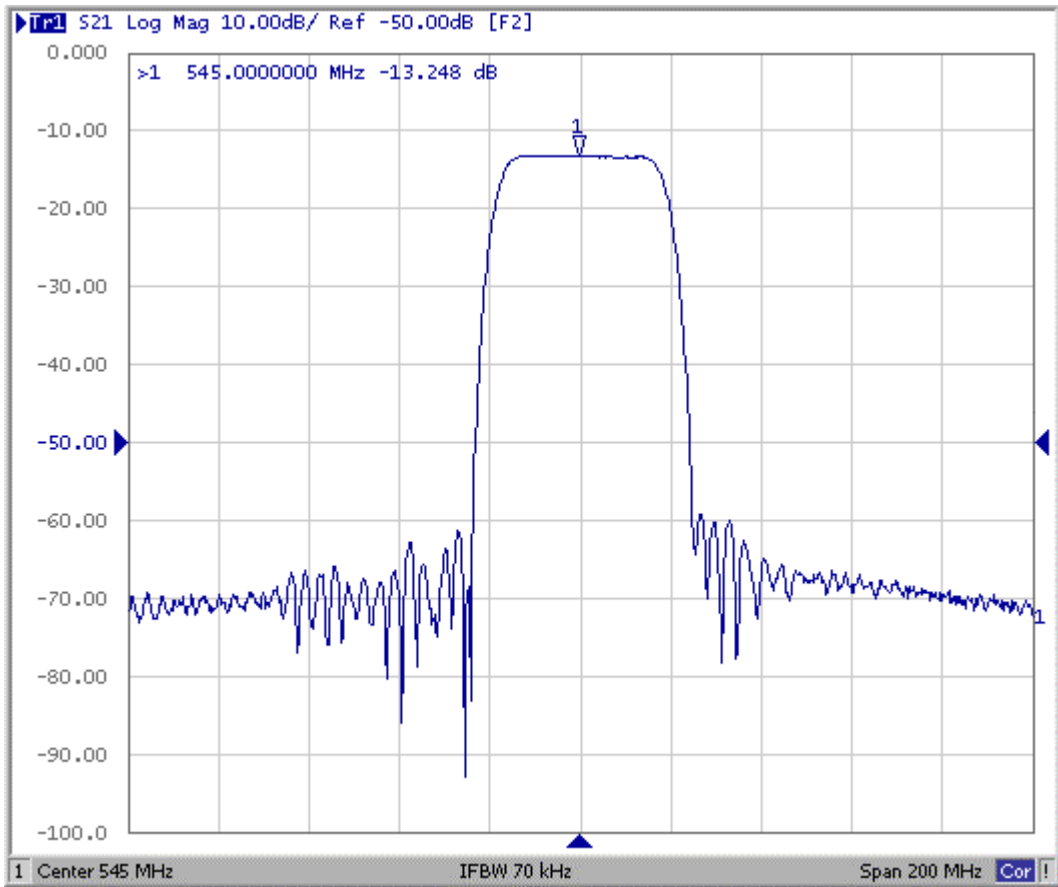
B. Characteristics :

Ambient Temperature: 25 °C

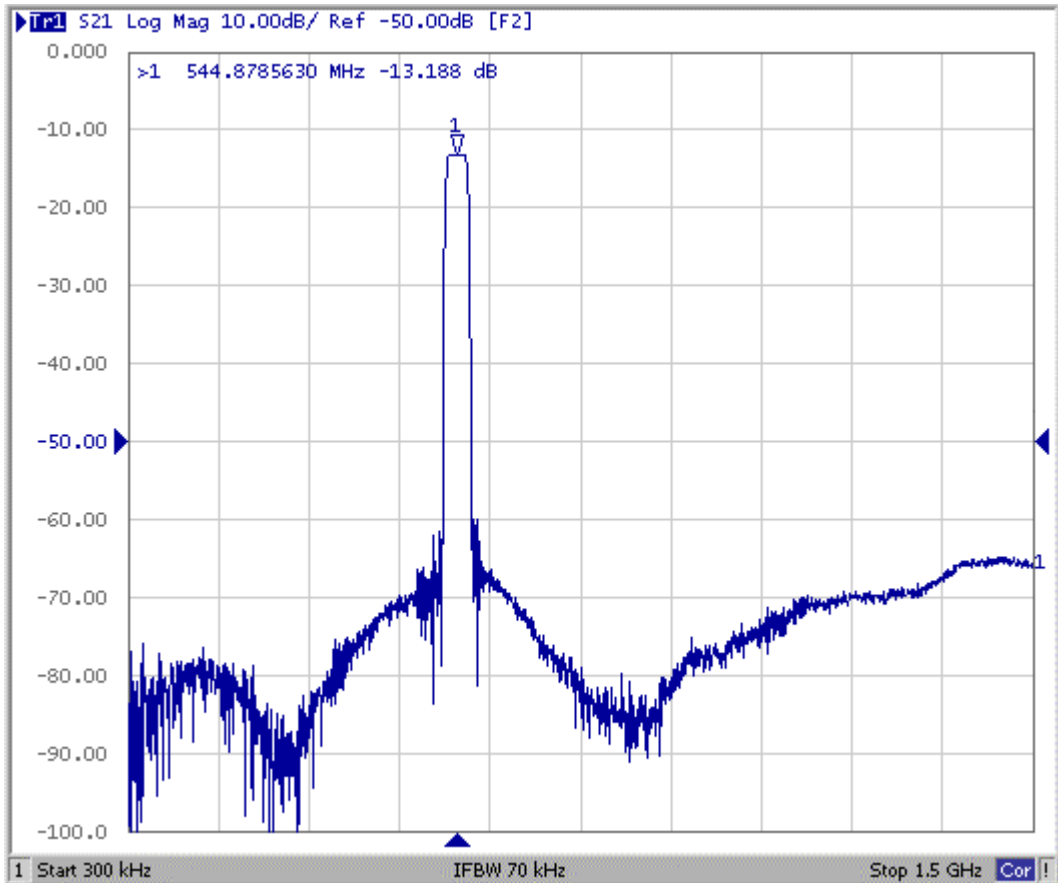
Characteristics		Value			Note	
		Min.	Typ.	Max.		
Center frequency F_c	MHz	-	545.0	-	-	
Minimum Insertion loss I.L.	dB	-	13.2	14.0	-	
Amplitude Ripple (530~560 MHz)	dB	-	0.5	1.5		
Group Delay Variation (530~560 MHz)	ns	-	12	45		
Absolute group delay (530~560 MHz)	ns	-	300	-	-	
Attenuation (Reference level from 0 dB)						
0 ~ 450	MHz	dB	50	65	-	-
476 ~ 506	MHz	dB	50	65	-	-
506 ~ 518	MHz	dB	45	60	-	-
620 ~ 638	MHz	dB	45	68	-	-
717 ~ 1000	MHz	dB	50	72		
1000 ~ 1500	MHz	dB	40	63		
Temp Coefficient		ppm/K	-	-23	-	-
Matching:						
1.The input of the filter will be matched to <u>50 ohm</u>						
2.The output of the filter will be matched to <u>50 ohm</u>						

C.FREQUENCY CHRACTERISTICS:

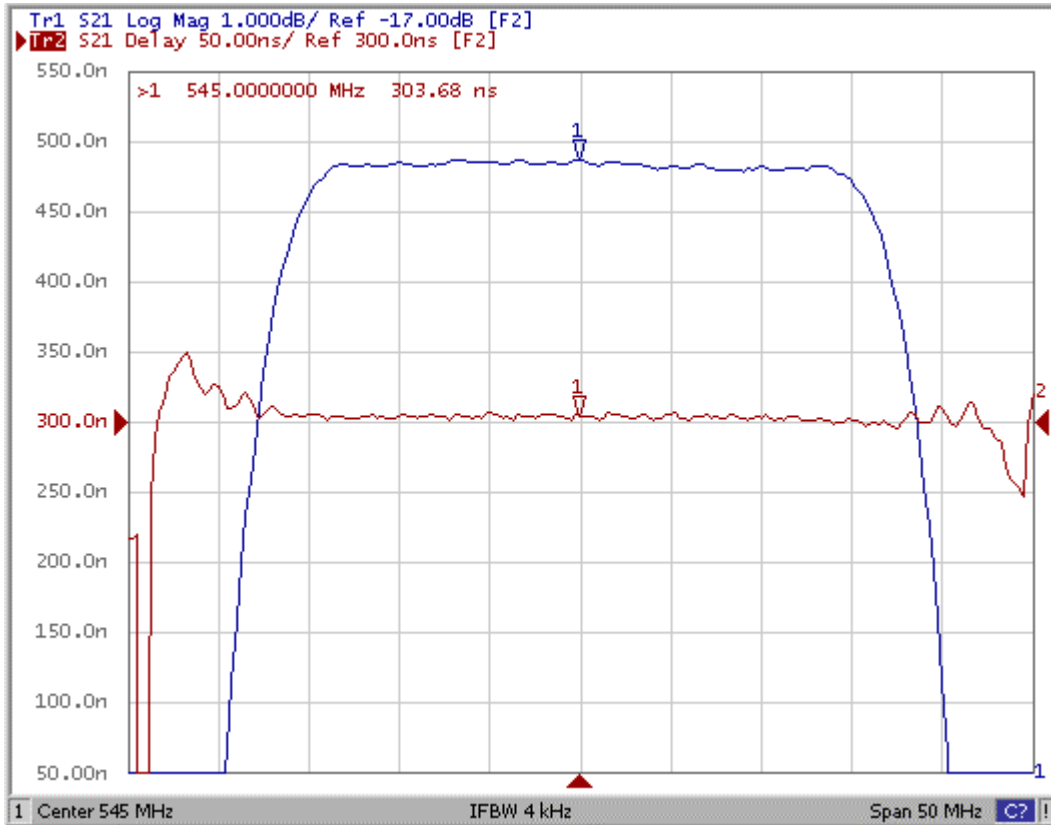
(1) S21 Response:(span 200MHz)



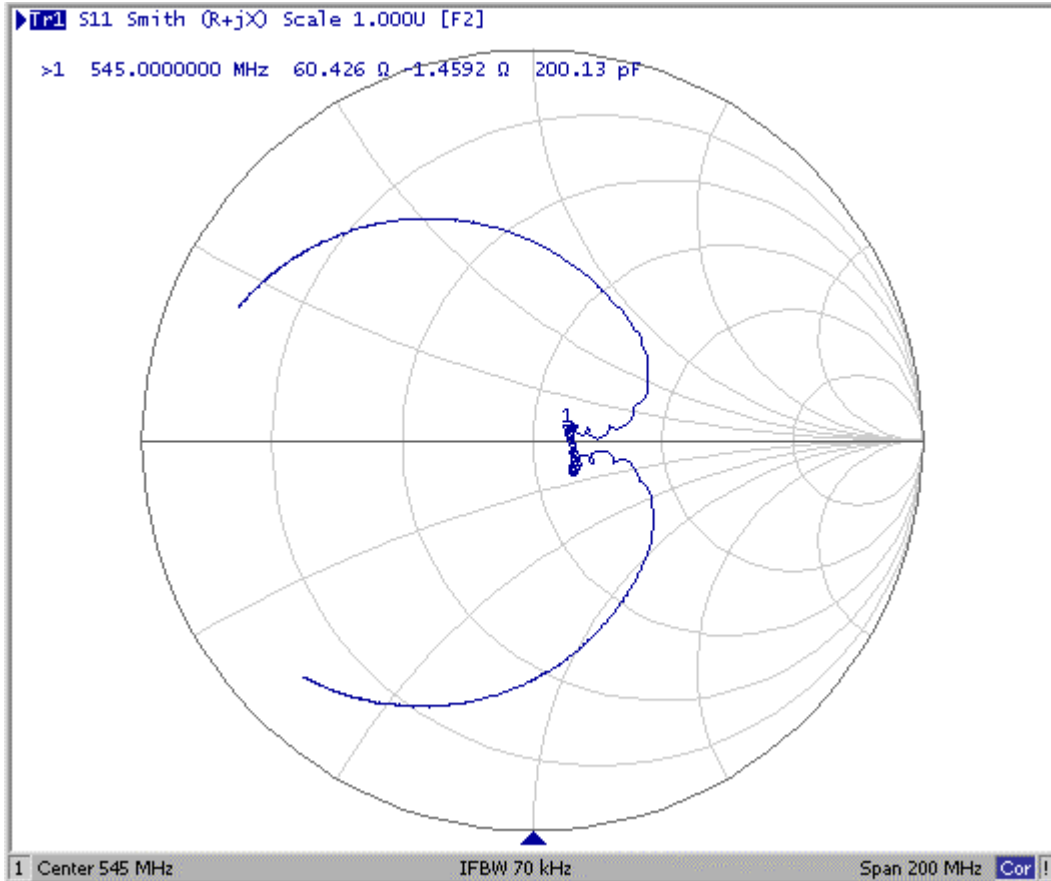
(2) S21 Response:(span 1.5GHz)



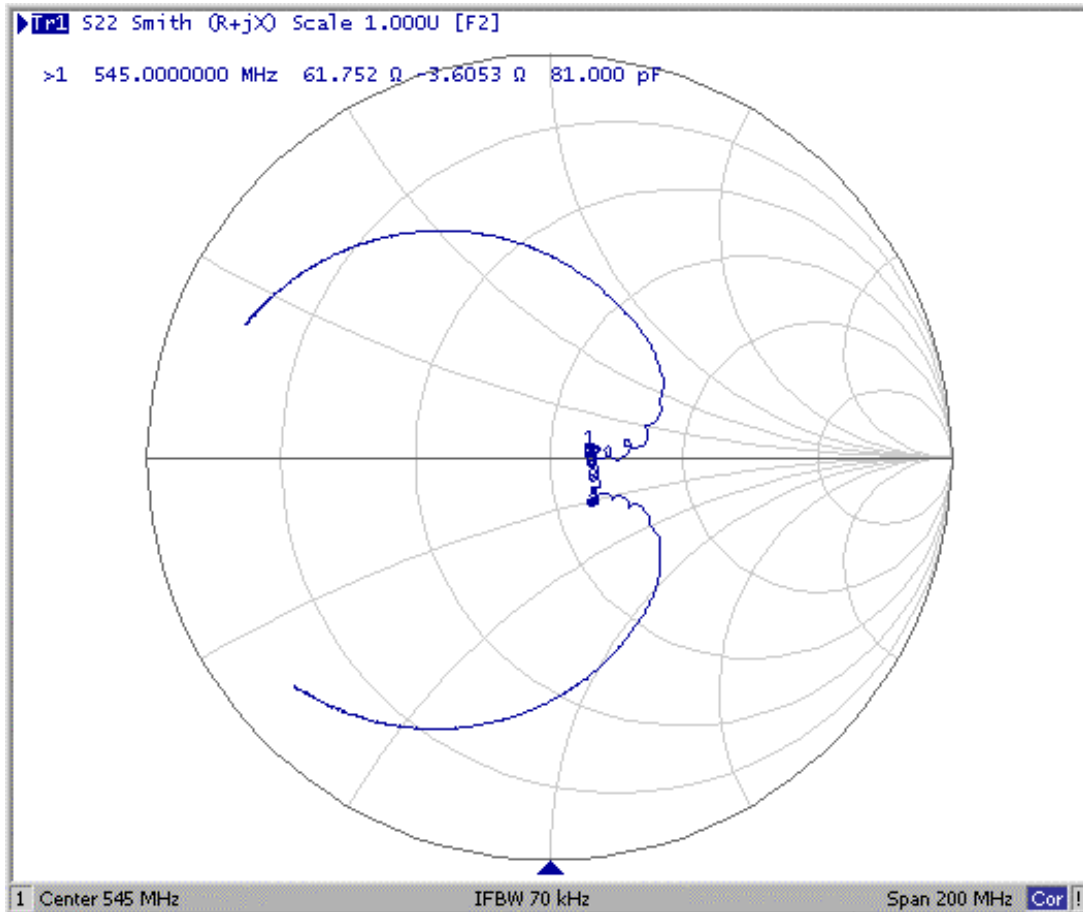
(3) Passband of Response: (span: 50MHz)



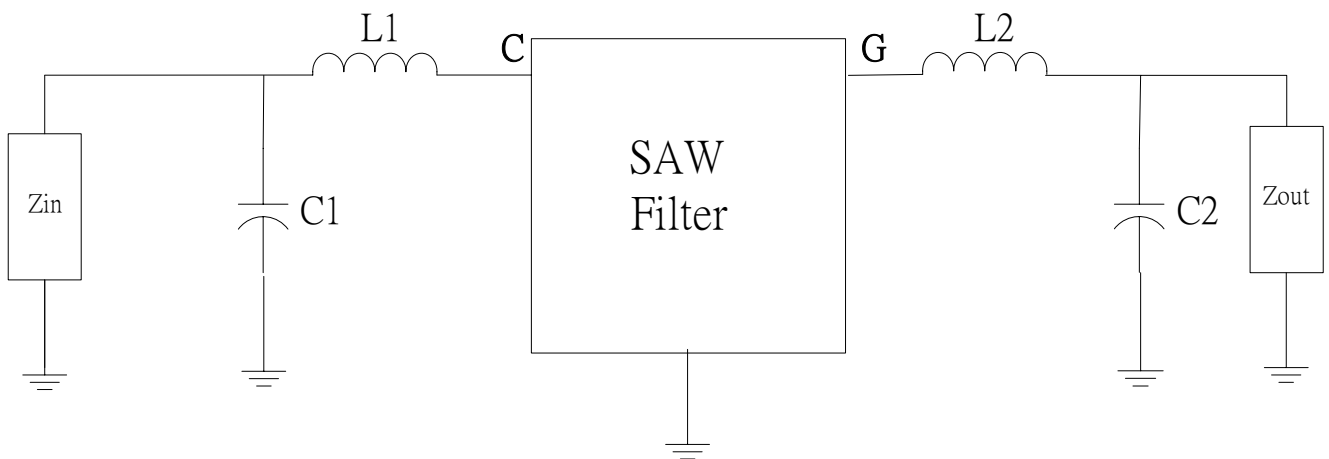
(4) S11 Smith Chart: (span 200MHz)



(5) S22 Smith Chart: (span 200MHz)

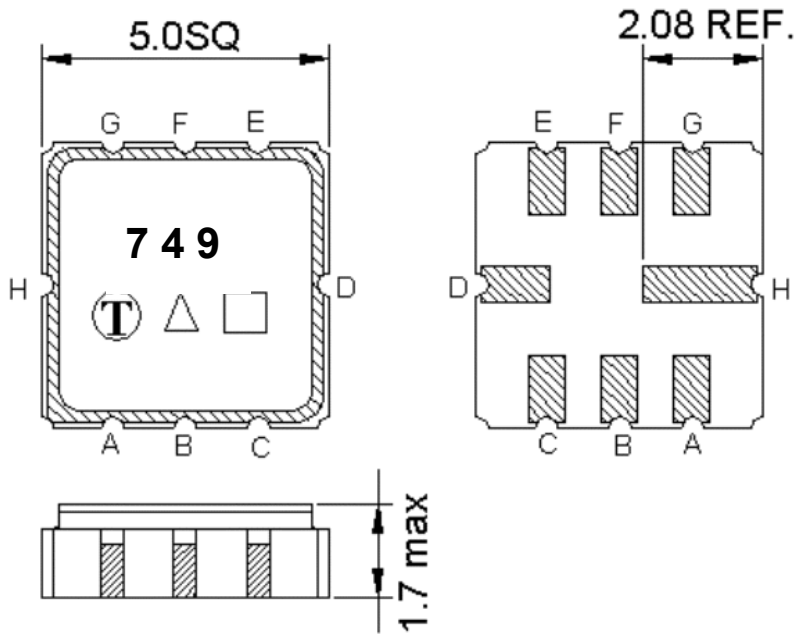


D. TEST CIRCUIT:



Zin and Zout are 50 Ω
 L1=12nH, C1=10pF, L2=10nH, C2=10pF

E. OUTLINE DRAWING:



Pin C: RF input

Pin G: RF output

Pin H,D: Case Ground

Pin A, B, E, F: Ground

□ : Week Code (Follow the table from planner each year)

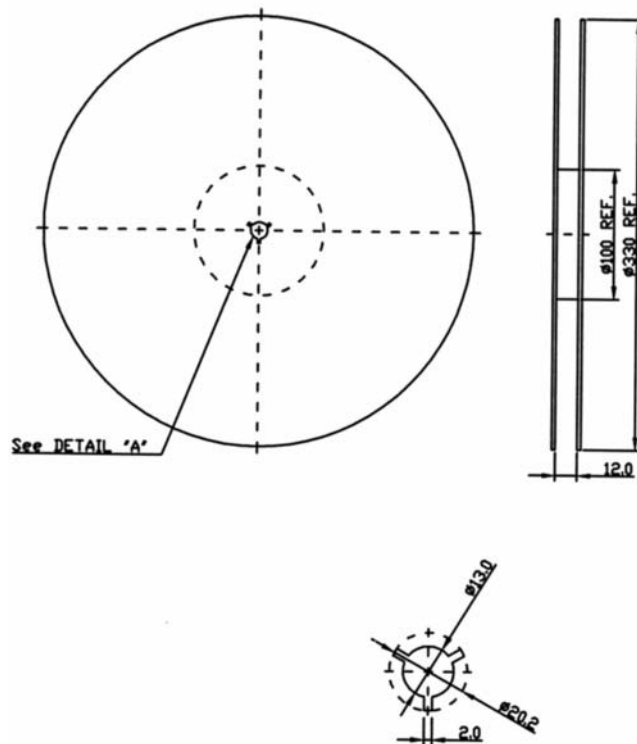
Unit : mm

△ : Product / Year Code

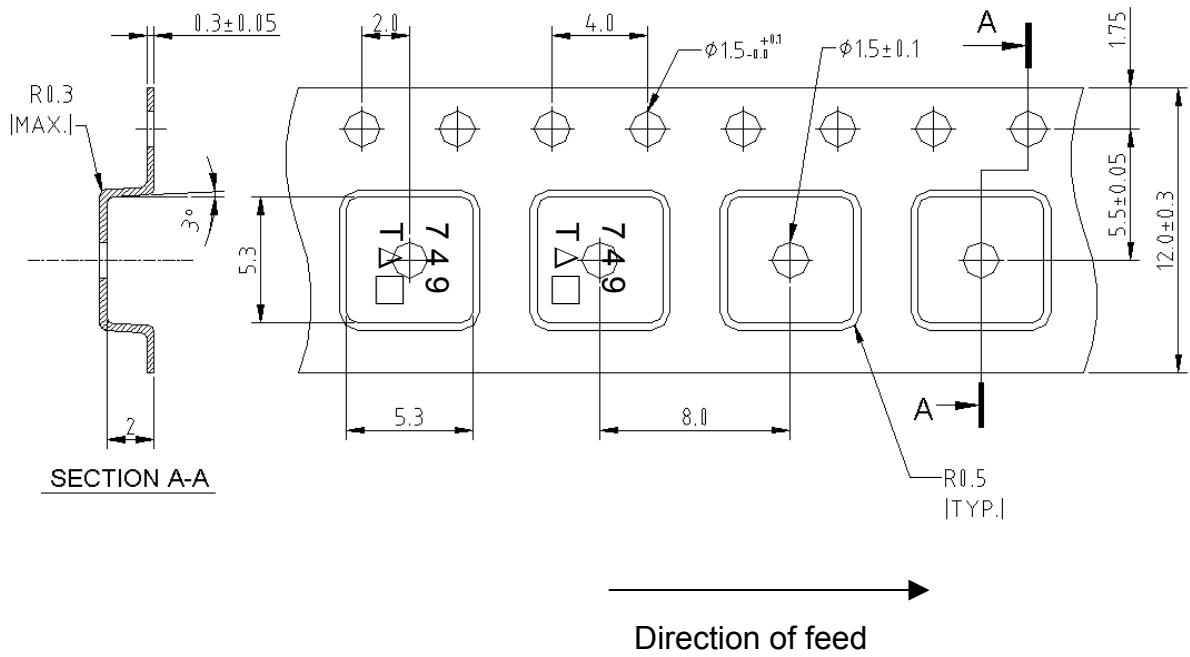
Year	2005 2009	2006 2010	2007 2011	2008 2012
Product Code	B	b	<u>B</u>	<u>b</u>

F.PACKING:

1.REEL DIMENSION



2.TAPE DIMENSION



G. Recommended Reflow Profile:

