



Data Sheet



Product Category: RF SAW Filter

Part Number	Package	Application	Last Modified
805-RF434.46M-A	5.0 x 5.0 SMD	Remote Control	Jan. 01, 2007

TYPE :

Remote Control, RF SAW Filter



PART NUMBER :

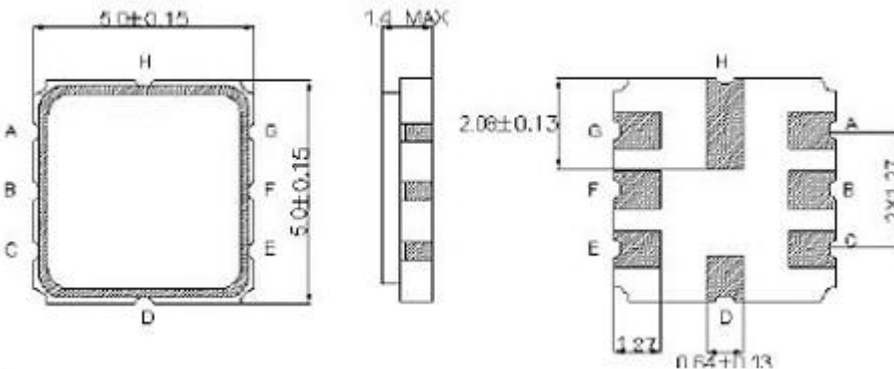
805-RF434.46M-A

OPERATING CONDITIONS / ELECTRICAL CHARACTERISTICS

PARAMETERS	Condition	Minimum	Typical	Maximum	Units
Center Frequency (Fo)	-	-	434.46	-	MHz
Insertion Loss	434.30 ~ 434.62 MHz	-	2.5	4.0	dB
Relative Attenuation:	10.0 ~ 414.5 MHz	45	50	-	dB
	414.50 ~ 428.50 MHz	30	36	-	
	428.50~433.42 MHz	15	23	-	
	435.42 ~ 442.50 MHz	10	15	-	
	442.50 ~ 550.0 MHz	30	38	-	
550.0 ~ 1000.0 MHz	45	55	-	-	
Terminating Impedance	-	-	50	-	ohm
Relative Passband Relative Passband	434.24 ~ 434.68 MHz	-	1.0	3.0	dB
	434.18 ~ 434.74 MHz	-	1.5	6.0	dB
Maximum DC Voltage	-	-	-	0	V
Maximum Input Power	-	-	-	10	dBm
Storage Temperature	-	-40	-	+85	°C
FTC	-	-	0.032	-	ppm/°C
Operating Temperature	-	-40	-	+85	°C

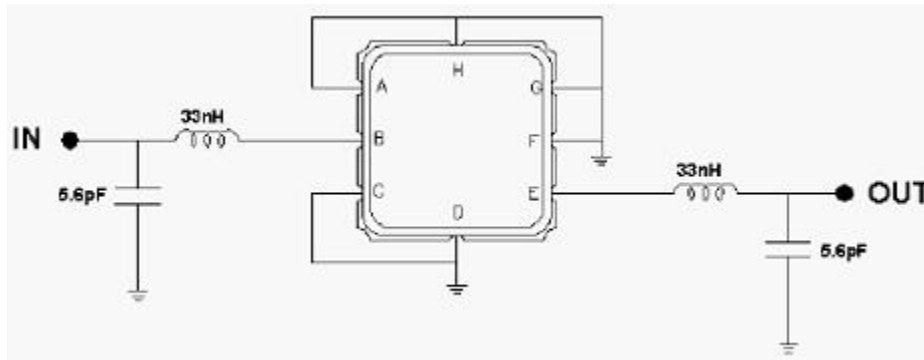
* Maximum Rating (Ta=25 °C)

PACKAGE OUTLINE (mm)

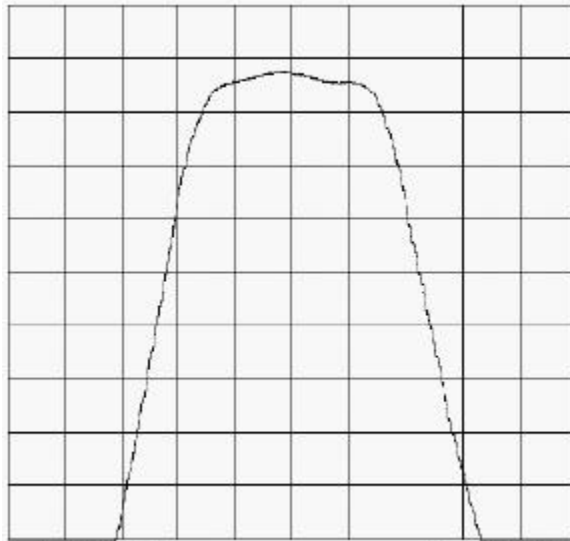


PIN LAYOUT	
A	In
B	Ground
C	Ground
D	Ground
E	Out
F	Ground
G	Ground
H	Ground

TEST FIXTURE

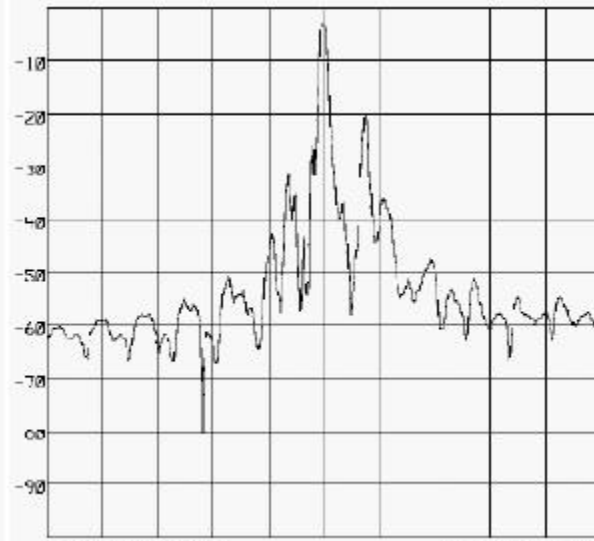


FREQUENCY RESPONSE



Center: 434.420 MHz

Span: 2.000 MHz



Center: 434.420 MHz

Span: 2.000 MHz

Oscilent Corporation - CALL **949.252.0522**

Part No.: 805-RF434.46M-A

18195 East McDermott Street, Building D, Irvine, CA 92614, USA
 Fax: 949.252.0599, E-Mail: Sales@Oscilent.com